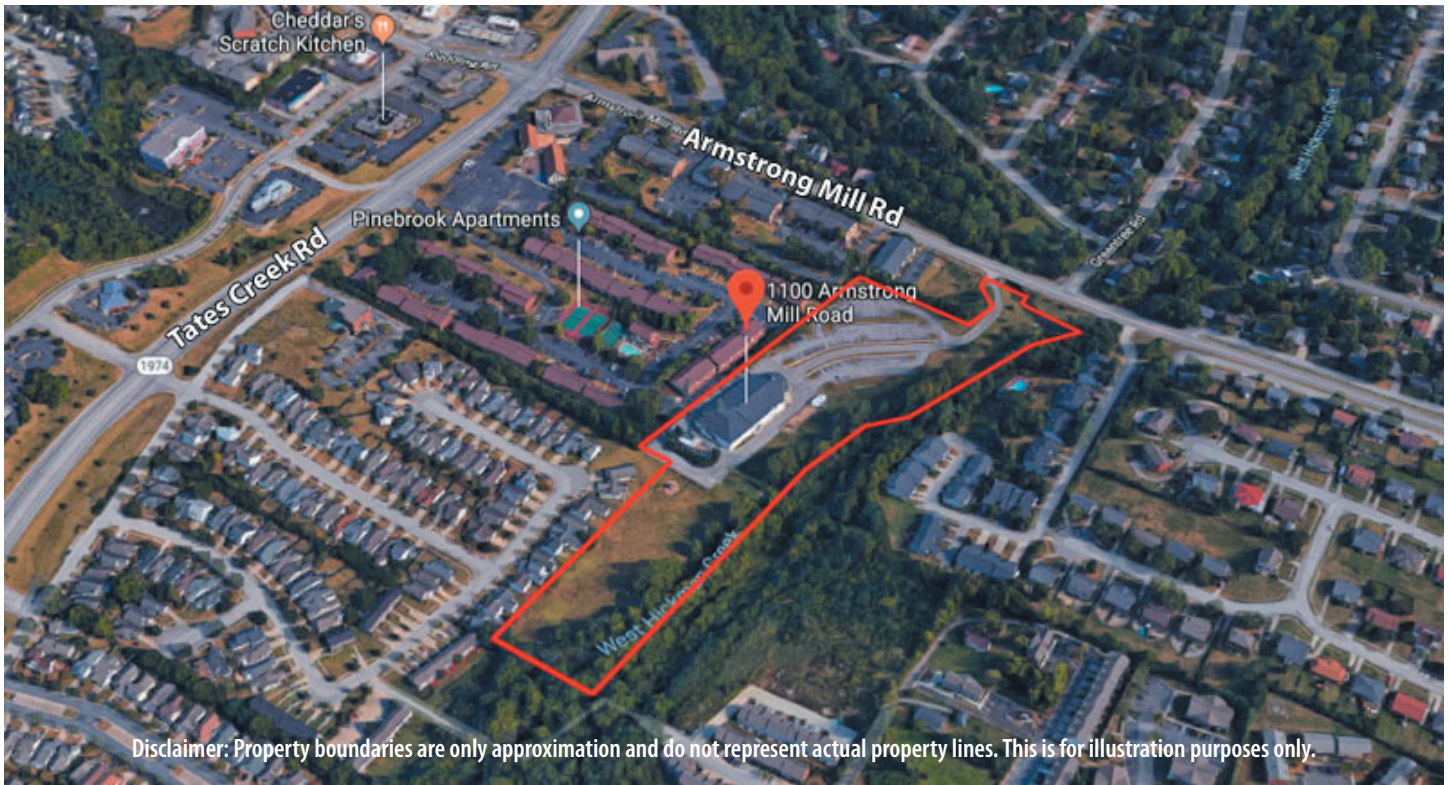


# FOR SALE

1100 Armstrong Mill Road, Lexington, KY 40517

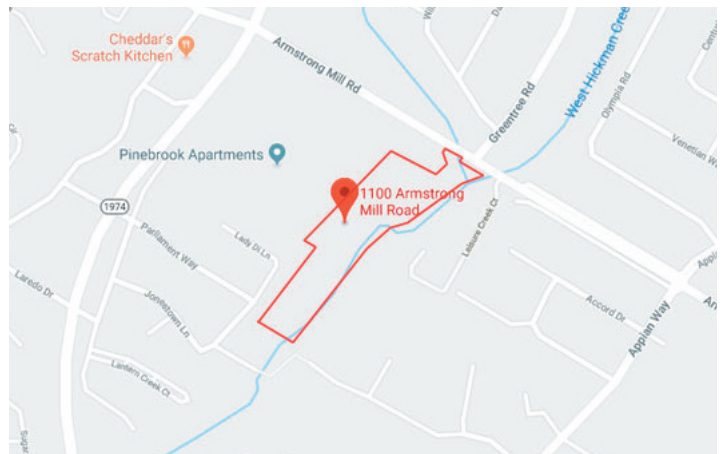
\$2,500,000



Disclaimer: Property boundaries are only approximation and do not represent actual property lines. This is for illustration purposes only.

## Property Details

Price:	\$2,500,000
Total Lot Size:	9.47 AC
Property Type:	Land
Zoning:	R-1C - Single Family Residential
Lex Baptist Temple building, built in 1989, 20,832 SF with 10,416 SF basement.	



New on the market! This well-located 9.47-acre property is zoned R-1C. Inside the urban services boundary, this property is ideal for a house of worship, school, or for redevelopment. Priced well below the tax assessment, this property won't last long.



**JAMES M. SCHRADER**

**859-288-5008**

[jschrader@schradercommercial.com](mailto:jschrader@schradercommercial.com)

444 E Main Street, Suite 110  
PO Box 21793 Lexington, KY 40522

**SCHRADER**  
COMMERCIAL PROPERTIES, LLC

**859-288-5008 / [schradercommercial.com](http://schradercommercial.com)**

The information contained herein is from sources believed, but not guaranteed to be reliable. Schrader Commercial Properties, LLC makes no representations or warranties regarding the property and you should conduct a careful independent investigation of the property to determine its suitability for your use and investment.