

Office Building For Sublease

// **1628 S WINDSOR DR**

Spokane, WA 99224



// PRESENTED BY:

**CORY BARBIERI**

VICE PRESIDENT

509.344.4901

CBARBIERI@G-B.COM





## // PROPERTY SUMMARY



### PROPERTY DESCRIPTION

Office space is now available in this prime location near Indian Canyon Golf Course and in between Spokane INT'L Airport and Downtown Spokane.

### PROPERTY FEATURES

- Office Space: 4,500 SF-11,911 Square Feet
- Sublease
- 66 Cubicles, 14 Privates Offices, and 2 Conference Rooms
- Available Space Can Be Demised
- Easy Egress & Ingress From I-90
- Abundant Free Parking
- Landlord Pays Utilities
- 7 min to Downtown & 7 min to Airport

// PRESENTED BY:

**CORY BARBIERI**  
VICE PRESIDENT  
509.344.4901  
CBARBIERI@G-B.COM

SPACES	LEASE RATE	SPACE SIZE		
Suite A	\$13.50 SF/yr	4,500 - 11,911 SF		
DEMOGRAPHICS	3 MILES	5 MILES	10 MILES	
Total Households	5,052	31,283	145,404	
Total Population	10,738	69,474	350,502	
Average HH Income	\$52,464	\$51,265	\$56,303	





# // ADDITIONAL PHOTOS



// PRESENTED BY:

**CORY BARBIERI**  
VICE PRESIDENT  
509.344.4901  
CBARBIERI@G-B.COM





## // ADDITIONAL PHOTOS



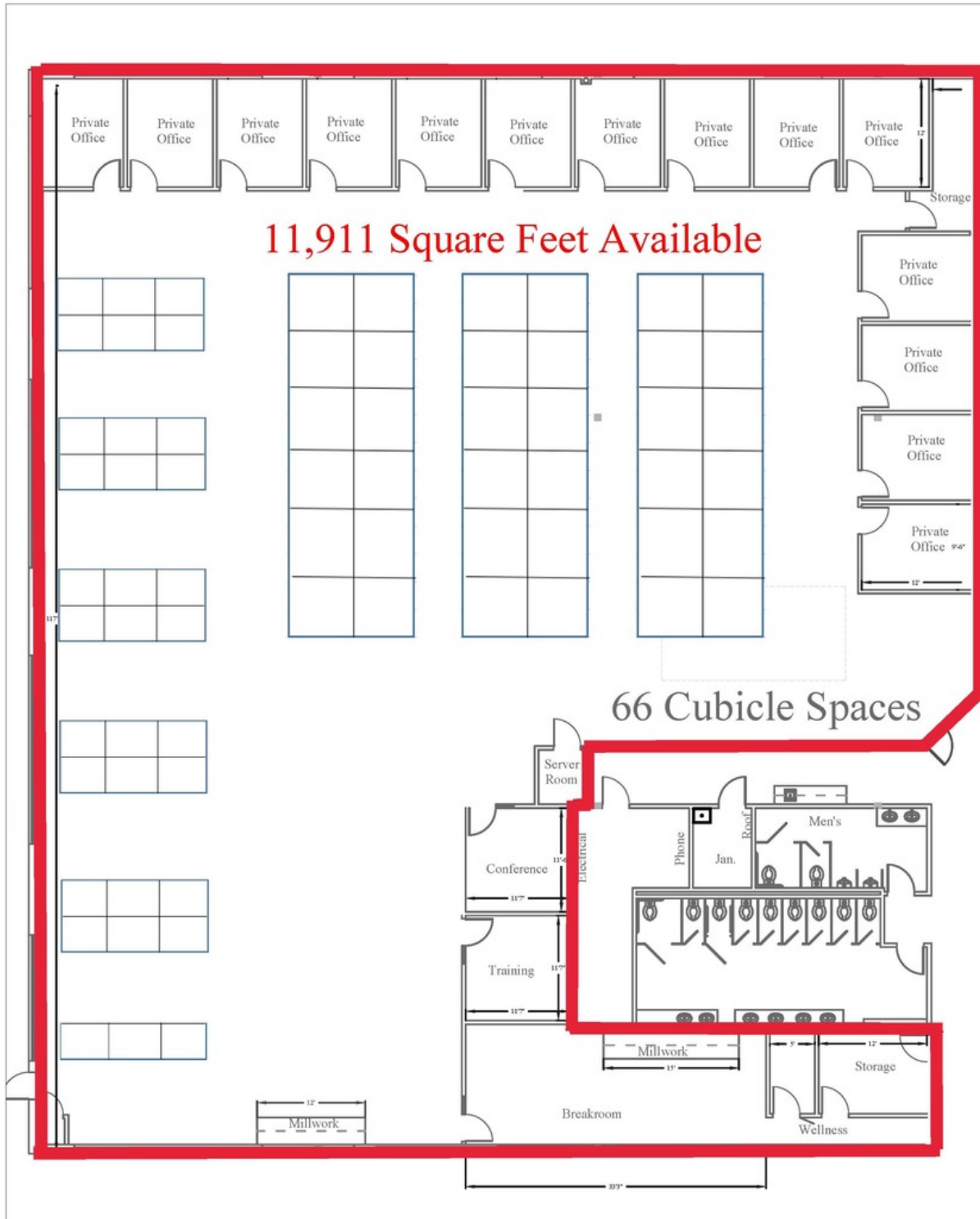
// PRESENTED BY:

**CORY BARBIERI**  
VICE PRESIDENT  
509.344.4901  
CBARBIERI@G-B.COM





# // FLOOR PLAN



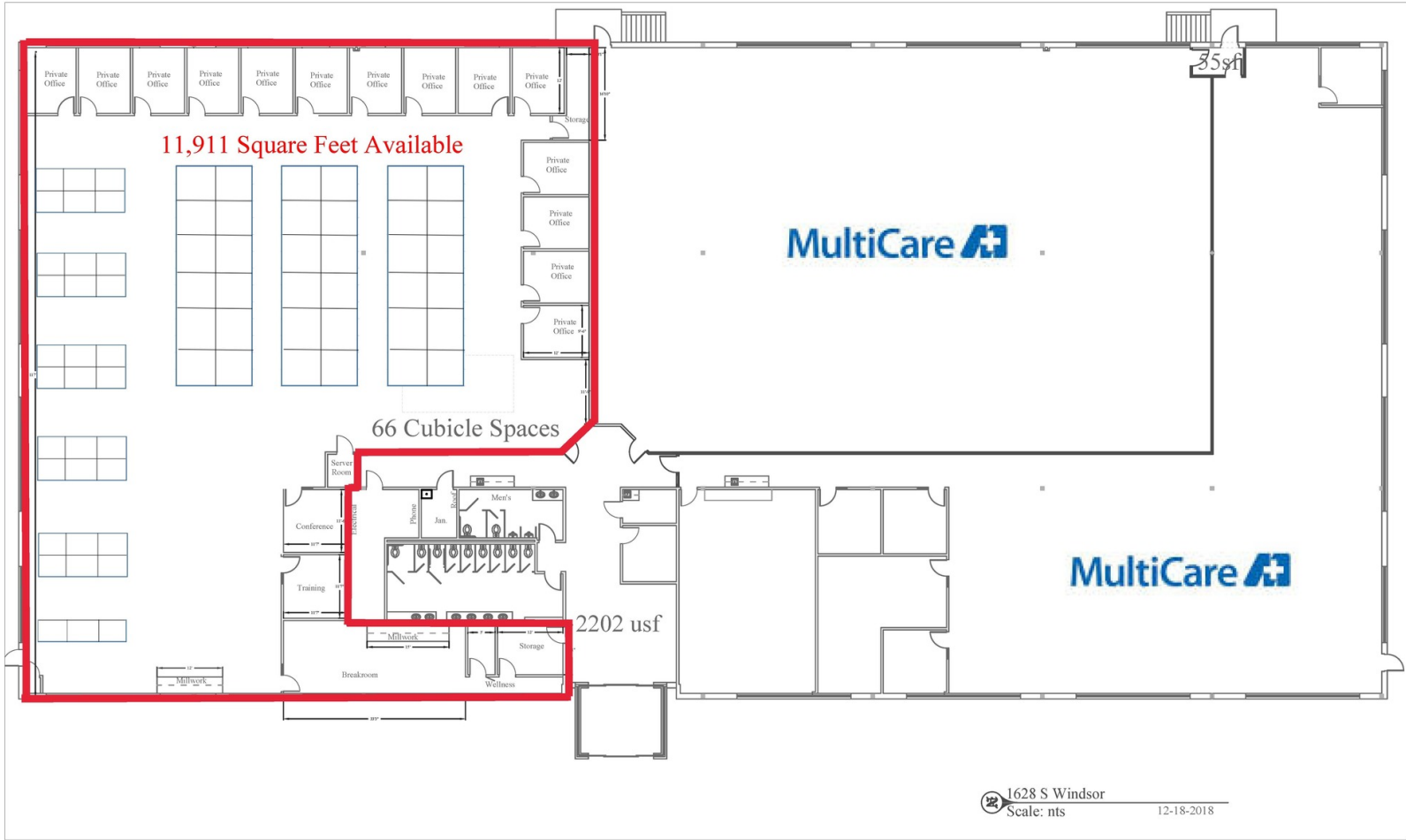
// PRESENTED BY:

**CORY BARBIERI**  
VICE PRESIDENT  
509.344.4901  
CBARBIERI@G-B.COM





# // SITE PLAN



1628 S Windsor  
Scale: nts 12-18-2018

// PRESENTED BY:  
**CORY BARBIERI**  
VICE PRESIDENT  
509.344.4901  
CBARBIERI@G-B.COM





# // LOCATION MAP



// PRESENTED BY:

**CORY BARBIERI**  
VICE PRESIDENT  
509.344.4901  
CBARBIERI@G-B.COM

