



**REDHAWK
SHOWROOM**

**32835 TEMECULA PKWY
TEMECULA | CA 92592**

**RETAIL SHOWROOM /
CREATIVE OFFICE FOR LEASE**

MATT SHAW, CCIM

Vice President

951.445.4502

mshaw@leetemecula.com

DRE# 01917622

BLAKE VALDEZ

Associate

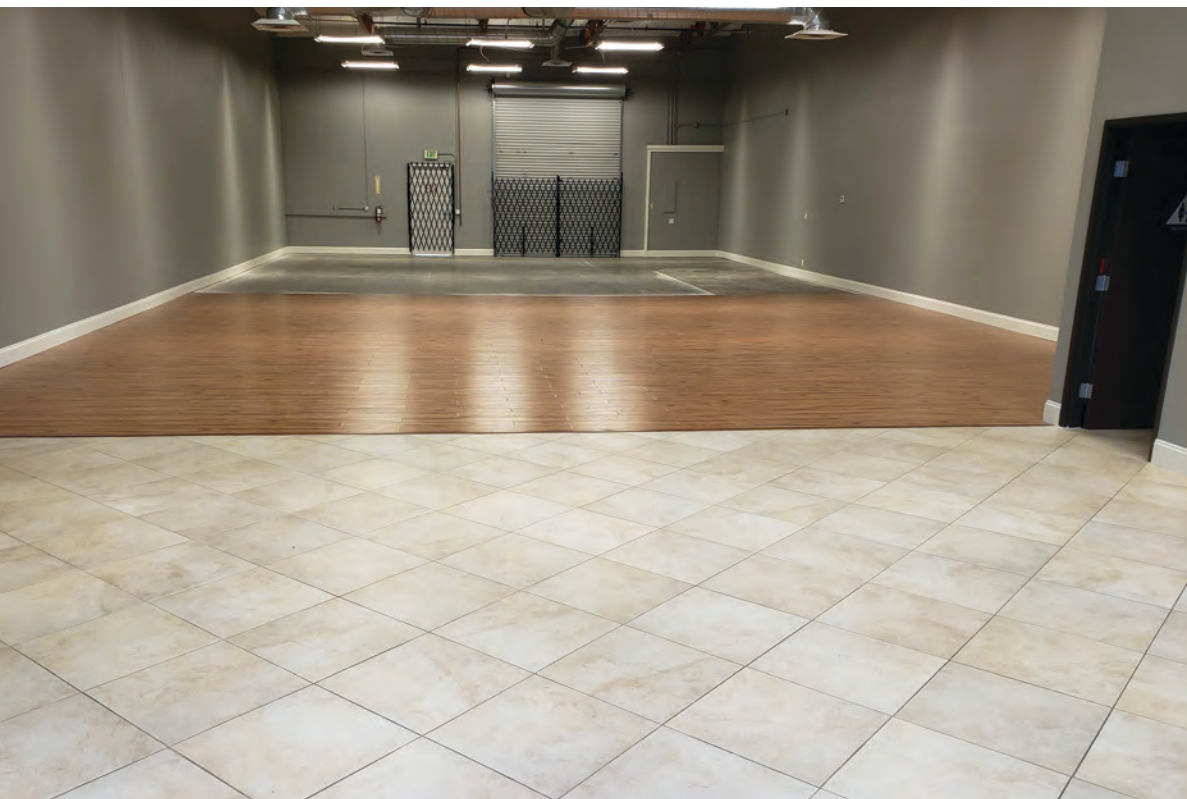
951.445.4509

bvaldez@leetemecula.com

DRE# 02107941



No warranty or representation has been made to the accuracy of the foregoing information. Terms of sale or lease and availability are subject to change or withdrawal without notice. Lee & Associates Commercial Real Estate Services, Inc. - Riverside. 25240 Hancock Avenue, Suite 100 - Murrieta, CA 92562 | Corporate ID# 01048055



PROPERTY DETAILS:

- ±2,000 SF, - 3,200 SF Retail Storefront Spaces Available
- Interior restroom
- Potential creative/open office
- Excellent Temecula Parkway Exposure
- Prominent Signage - 28,000 Cars/Day
- 119,413 Population - 5 miles
- \$125,417 Average Household Income - 3 miles
- Next to: Ralphs, CVS, Best Buy, Starbucks, Walmart
- Up to 50% less rent than other Retail centers in the vicinity
- New Homes scheduled to be constructed across the street
- Rental Rate: Negotiable

No warranty or representation has been made to the accuracy of the foregoing information. Terms of sale or lease and availability are subject to change or withdrawal without notice. Lee & Associates Commercial Real Estate Services, Inc. - Riverside. 25240 Hancock Avenue, Suite 100 - Murrieta, CA 92562 | Corporate ID# 01048055

VAIL RANCH MIDDLE SCHOOL

BUTTERFIELD STAGE RD 13,000 CPD



TEMECULA PKWY 28,000 CPD

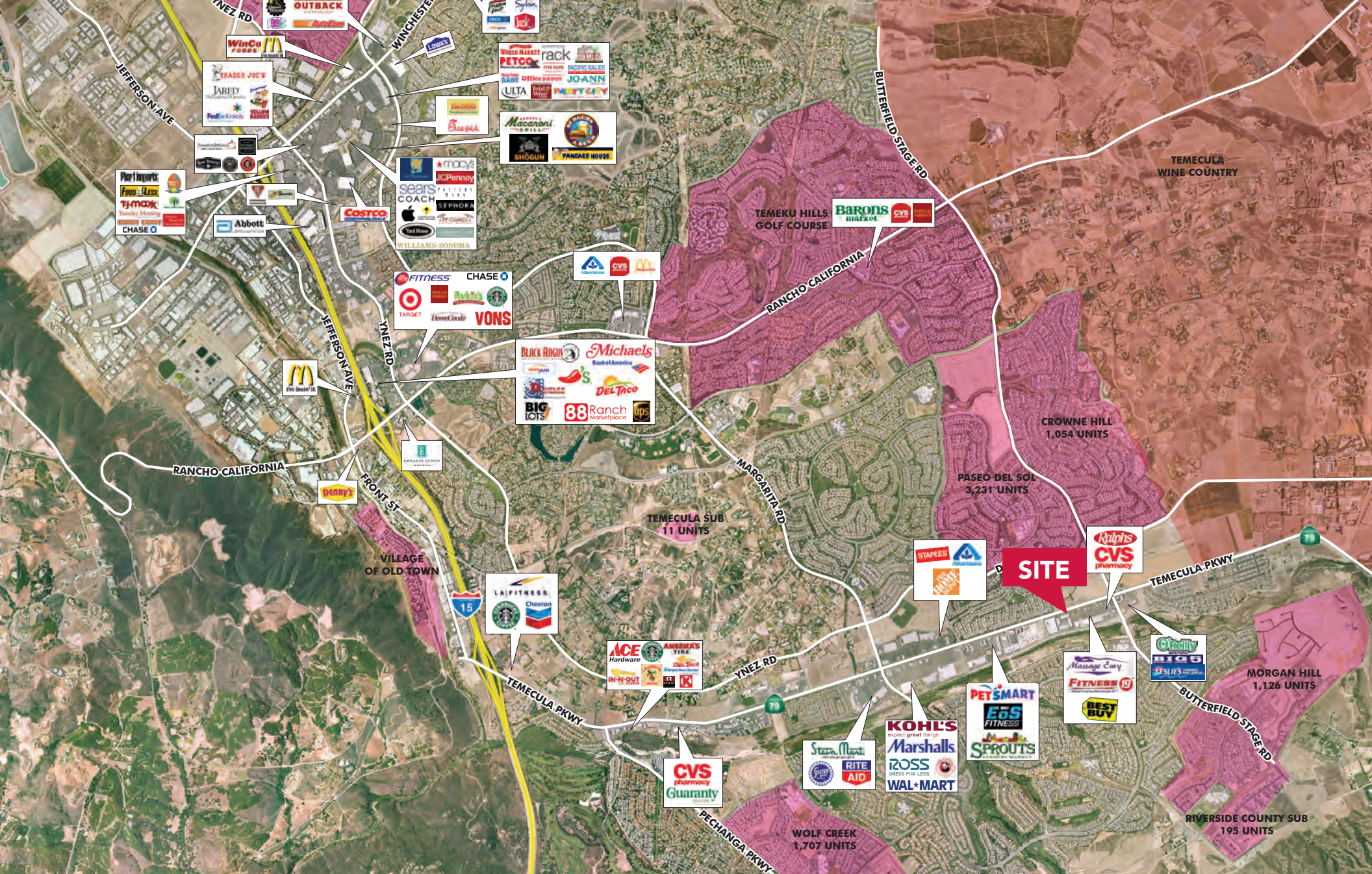


MATT SHAW, CCIM
Vice President
951.445.4502
mshaw@leetemecula.com
DRE# 01917622

BLAKE VALDEZ
Associate
951.445.4509
bvaldez@leetemecula.com
DRE# 02107941

 **LEE &
ASSOCIATES**
COMMERCIAL REAL ESTATE SERVICES

No warranty or representation has been made to the accuracy of the foregoing information. Terms of sale or lease and availability are subject to change or withdrawal without notice. Lee & Associates Commercial Real Estate Services, Inc. - Riverside. 25240 Hancock Avenue, Suite 100 - Murrieta, CA 92562 | Corporate ID# 01048055



MATT SHAW, CCIM

Vice President

951.445.4502

mshaw@leetemecula.com

DRE# 01917622

BLAKE VALDEZ

Associate

951.445.4509

bvaldez@leetemecula.com

DRE# 02107941



No warranty or representation has been made to the accuracy of the foregoing information. Terms of sale or lease and availability are subject to change or withdrawal without notice. Lee & Associates Commercial Real Estate Services, Inc. - Riverside. 25240 Hancock Avenue, Suite 100 - Murrieta, CA 92562 | Corporate ID# 01048055