



## FEATURES

- › Ideal for medical or professional office use
- › Close proximity to St. Mary's Hospital, Libbie Place & Willow Lawn
- › Excellent surface parking (5 spaces/1,000 SF)
- › Close to dining and amenities along West Broad Street
- › Contact agent for pricing

DEMOGRAPHICS	1 MILE	3 MILE	5 MILE
POPULATION	8,699	84,443	245,677
AVERAGE HH INCOME	\$82,731	\$83,242	\$71,804
DAYTIME EMPLOYEES	2,352	22,066	51,617

AVAILABLE SUITES	SIZE
SUITE A-4 former dental office	1,406± SF
SUITE D-19 former dental office	867± SF
SUITE G-27 former dental office	1,156± SF
SUITE D-17 former dental office	1,768± SF
SUITE B-10 former dental office	1,326± SF

For More Information Regarding This Property, Please Contact:

### TUCKER DOWDY

804-228-4932  
tdowdy  
@commonwealthcommercial.com

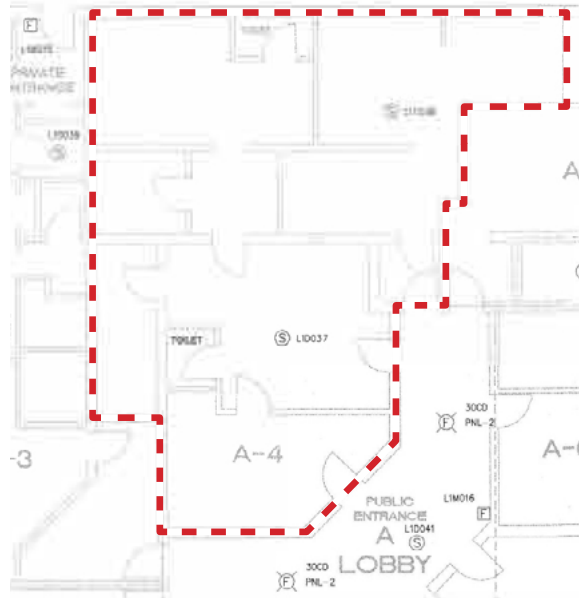
### MICHAEL GOOD

804-250-6166  
mgood  
@commonwealthcommercial.com

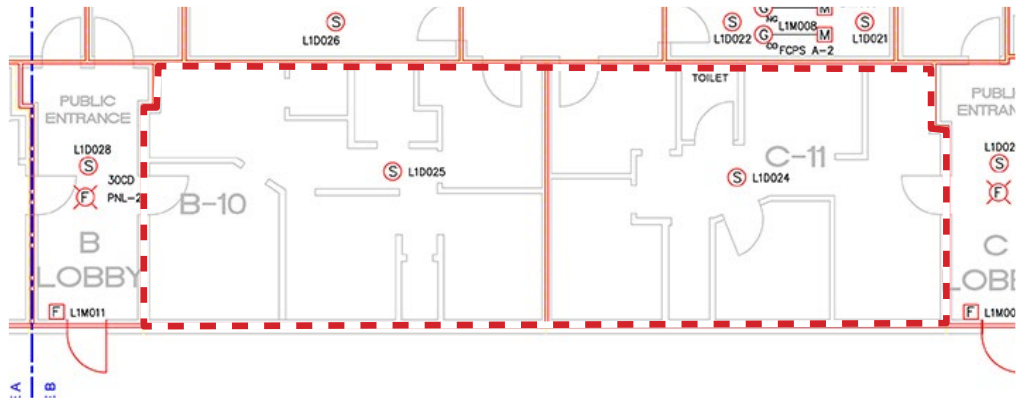


**FLOOR PLANS**

**SUITE A-4 - 1,406± SF**  
AVAILABLE JUNE 2022

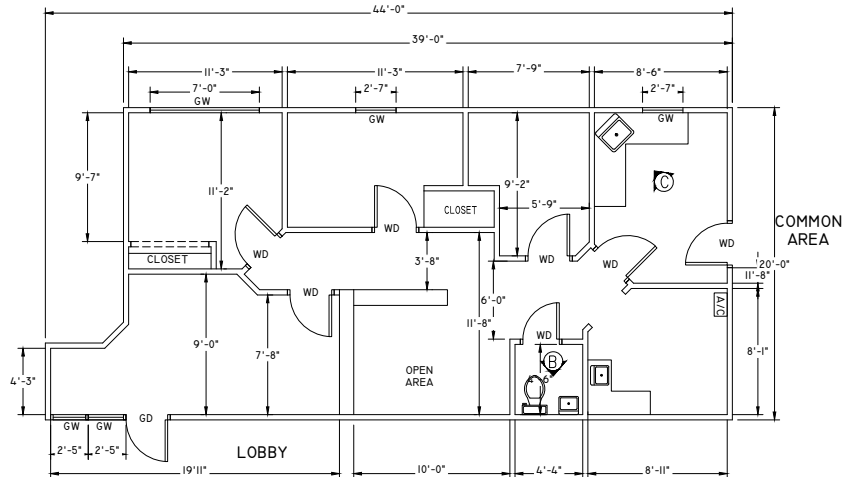
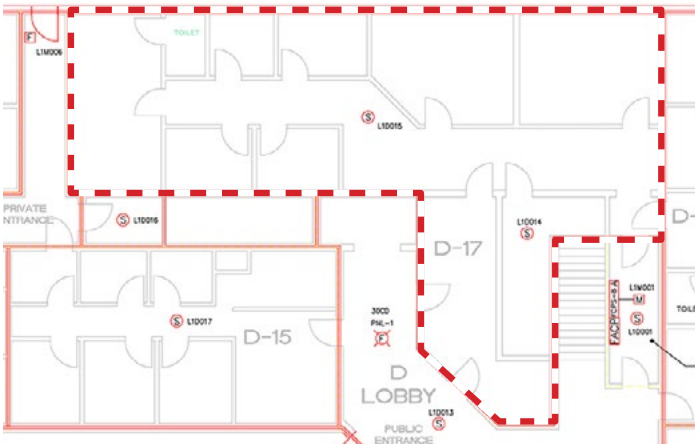


**SUITE B-10 - 1,326± SF**  
FORMER DENTAL OFFICE



**SUITE D-17 - 1,768± SF**

**SUITE D-19 - 823± SF**  
FORMER DENTAL OFFICE





**FOR LEASE** 5700 Old Richmond Avenue | Richmond, VA 23005



T 804-346-4966 F 804-346-5901 COMMONWEALTHCOMMERCIAL.COM