

LIVONIA CENTERS



AVAILABLE NOW

30000-30070 plymouth road / livonia, mi



RETAIL OPPORTUNITY

LIVONIA CENTERS



address

30000-30070 Plymouth Road
Livonia, MI 48150

features

Join this redevelopment with new mid-box space and outlot space available with drive-thru capability.

Delivery is expected for Fall 2018.

High day time traffic with a vast amount of office/industrial density within the immediate trade area.

Great visibility and accessibility provided being located at the traffic light, allowing direct access to Walmart, Target, and LA Fitness traffic.

availability

116,163 SF
Available Now

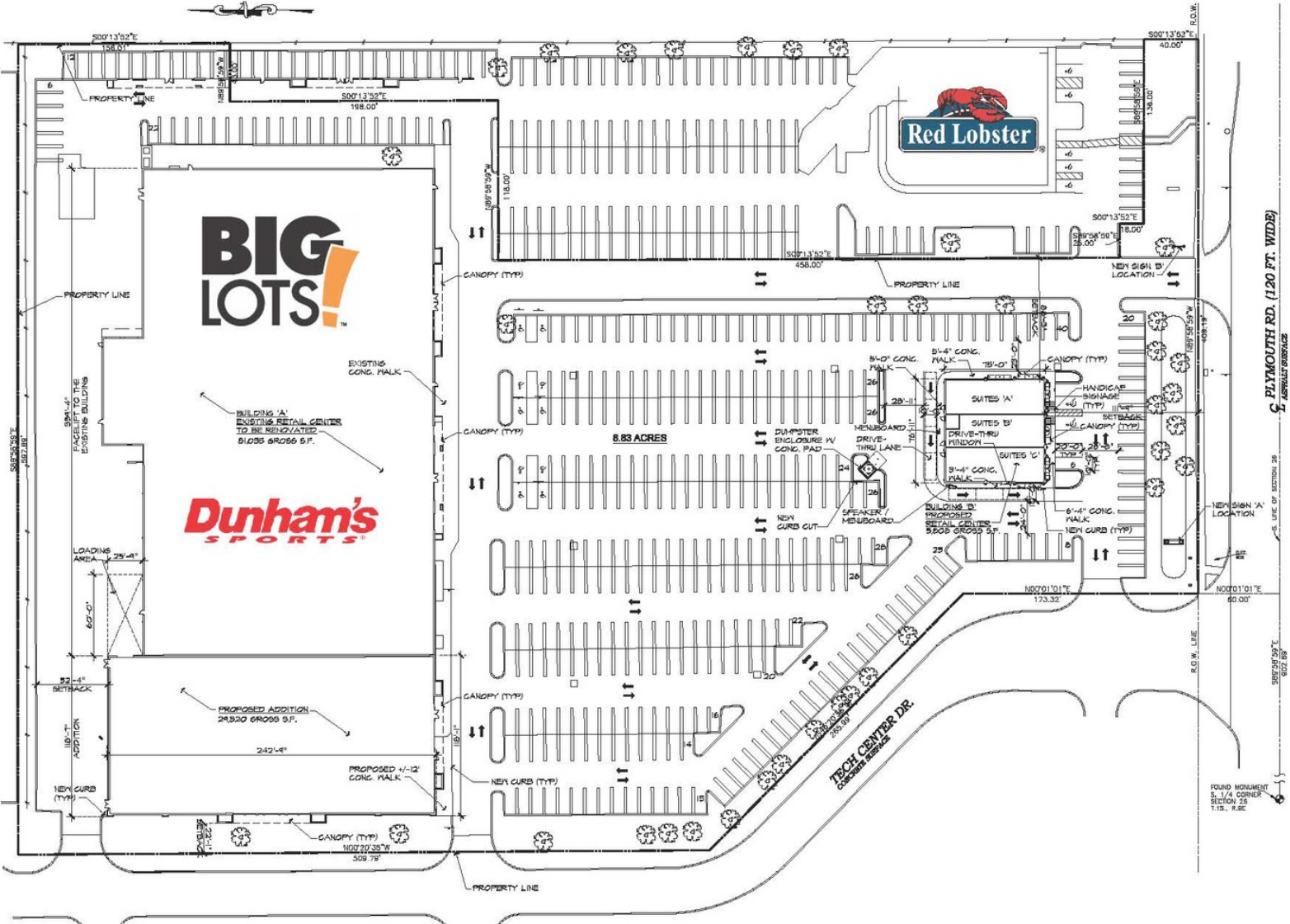
co-tenants



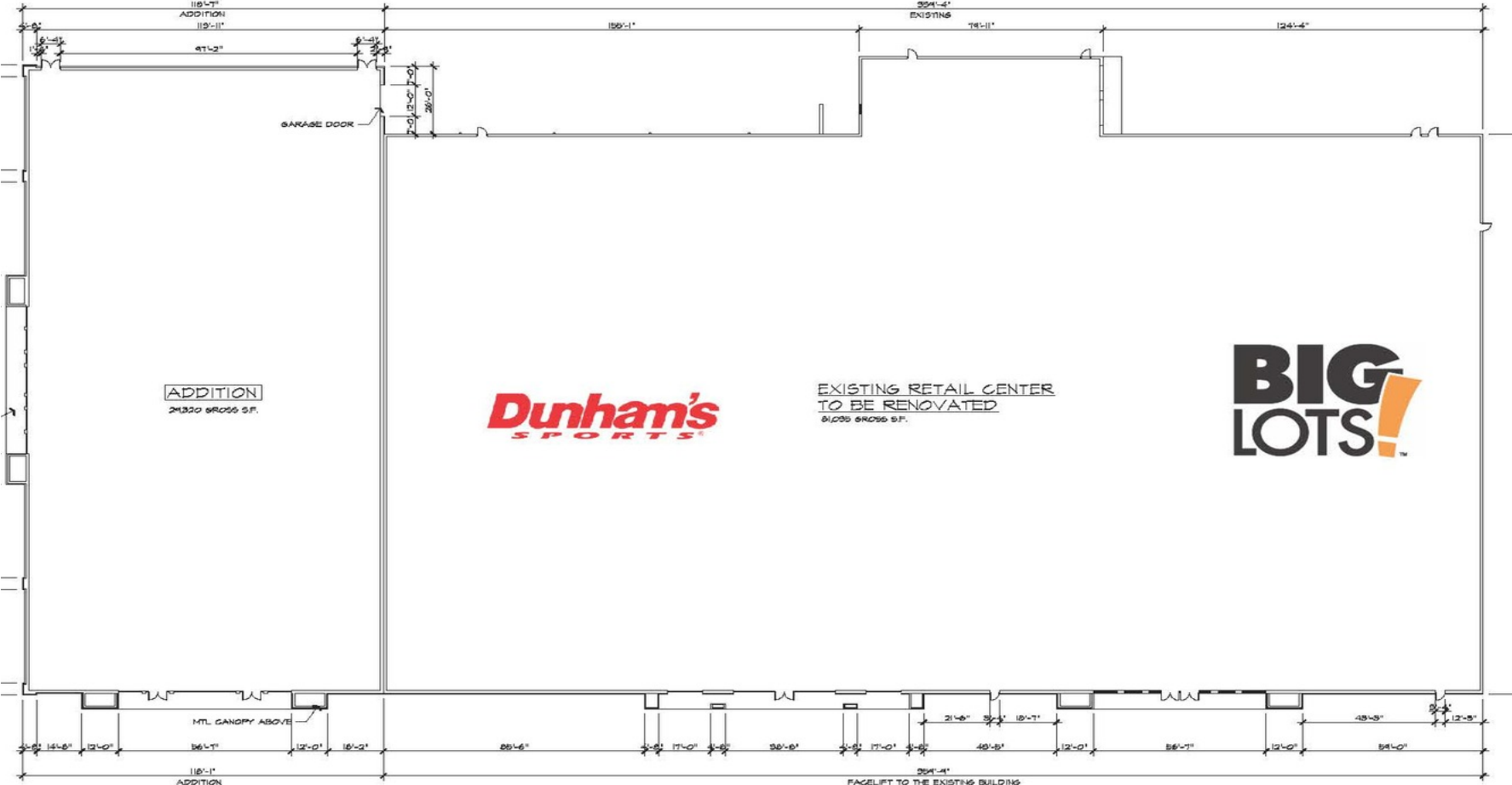
demographics

	1 MILE	3 MILES	5 MILES
POPULATION	7,007	97,427	288,754
HOUSEHOLDS	2,845	40,167	117,711
AVG HOUSEHOLD INCOME	\$76,440	\$73,348	\$70,283
DAYTIME POPULATION	13,536	99,910	267,370

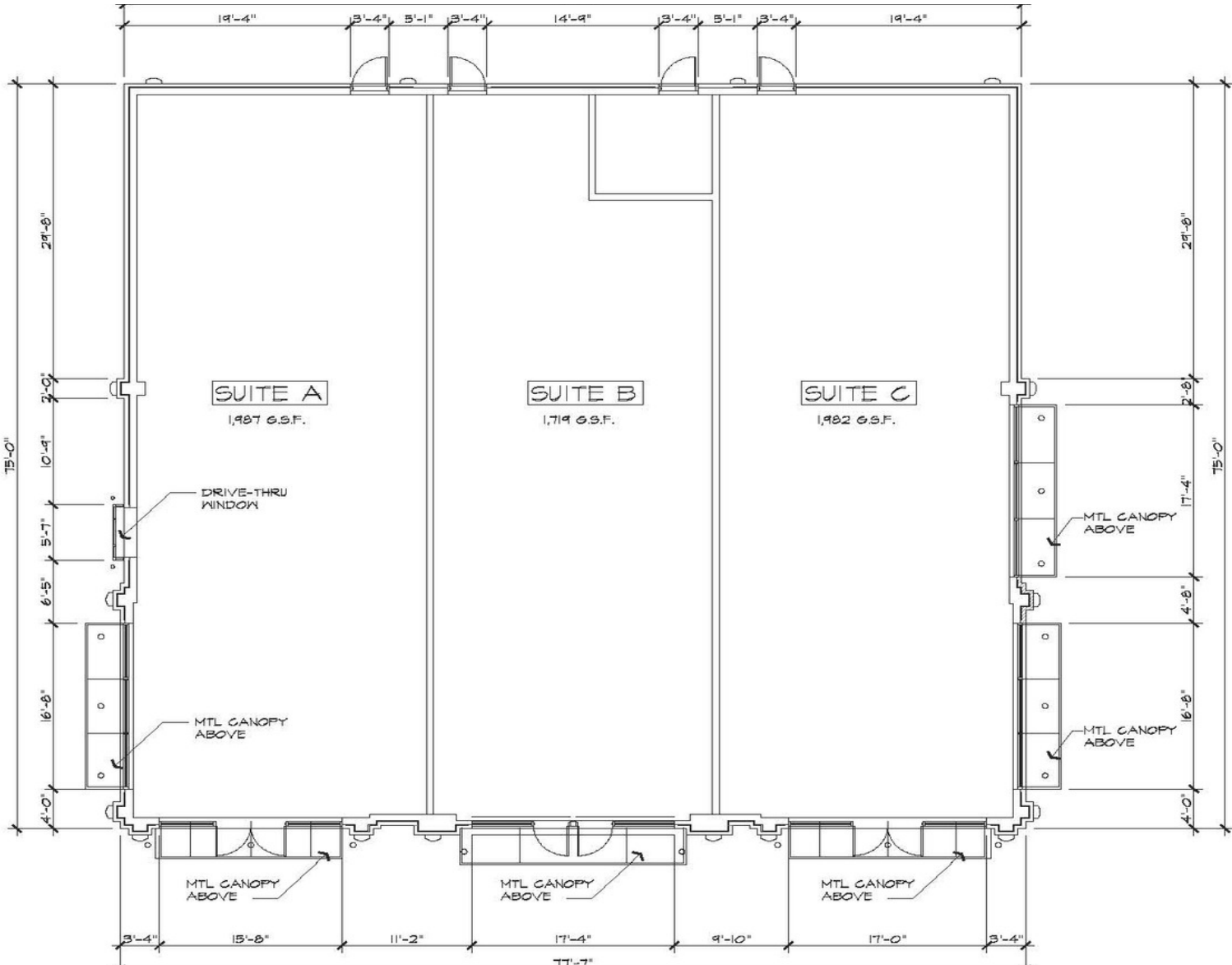
LIVONIA CENTERS



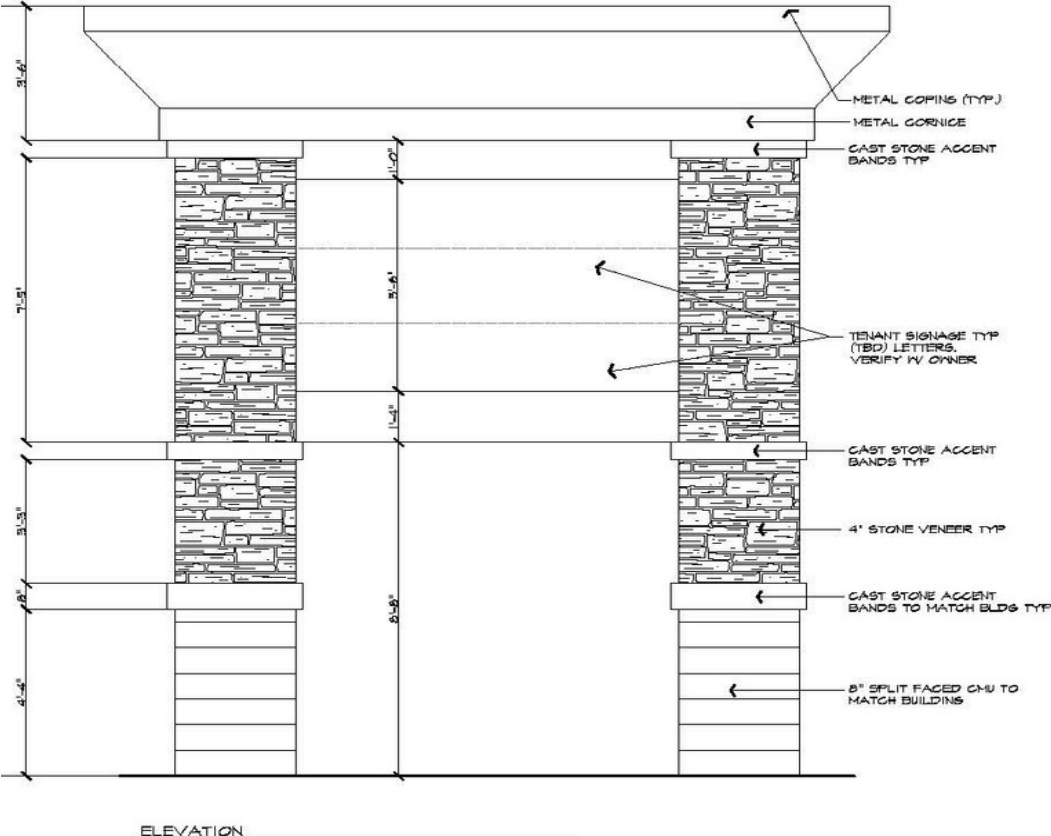
LIVONIA CENTERS



LIVONIA CENTERS

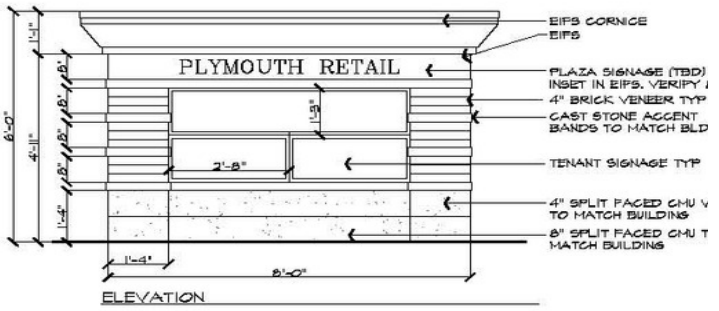
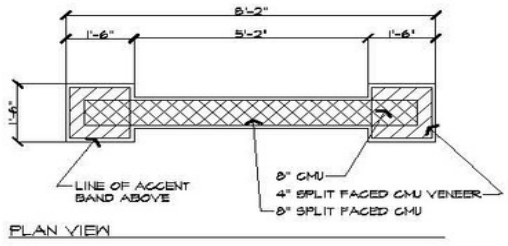


LIVONIA CENTERS



NOTE.
 FINAL SIGN ILLUMINATION, IF ANY, TO BE SUBMITTED ON SIGNAGE SUBMITTAL WITH FINAL DECISION BY OWNER AND SIGNAGE COMPANY. SIGNAGE SHALL MEET LOCAL STANDARDS.

PLYMOUTH ROAD - SIGNAGE 'A'
 SCALE: 1/2"=1'-0"



NOTE.
 FINAL SIGN ILLUMINATION, IF ANY, TO BE SUBMITTED ON SIGNAGE SUBMITTAL WITH FINAL DECISION BY OWNER AND SIGNAGE COMPANY. SIGNAGE SHALL MEET LOCAL STANDARDS.

PLYMOUTH ROAD - SIGNAGE 'B'
 SCALE: 1/2"=1'-0"

LIVONIA CENTERS



LIVONIA CENTERS



LIVONIA CENTERS



LIVONIA CENTERS



LIVONIA CENTERS

corbin
yaldoo

Mid-America Real Estate -
Michigan, Inc
T: 248.855.6800
CYaldoo@MidAmericaGrp.com

brad
rosenberg

Mid-America Real Estate -
Michigan, Inc
T: 248.385.5001
BRosenberg@MidAmericaGrp.com



38500 Woodward Avenue
Suite 100
Bloomfield Hills, MI 48304
248.855.6800
MidAmericaGrp.com

