

193 Bedford Avenue. Williamsburg.



Located in the heart
of the Bedford Avenue
retail corridor.

Neighboring Tenants:

- Whole Foods (coming soon)
- Brooklyn Industries
- Dos Toros
- The Meatball Shop
- Pinkyotto
- Goorin Hats
- Subway
- Urban Outfitters
- Umami Burger (coming soon)
- HSBC Bank
- Joe Fresh (coming soon)
- Dos Toros
- Juice Generation
- Duane Reade

SPACE B

Ground Floor: 1,000 sf

Basement: 1,000 sf

Additional outdoor space
available in rear

Frontage: 12 feet

Possession: Immediate

Rental: Upon Request

- One block from the **L** Bedford Avenue Subway Station with an annual ridership of 8.3 million
- All uses considered

**Newmark Grubb
Knight Frank**
Retail



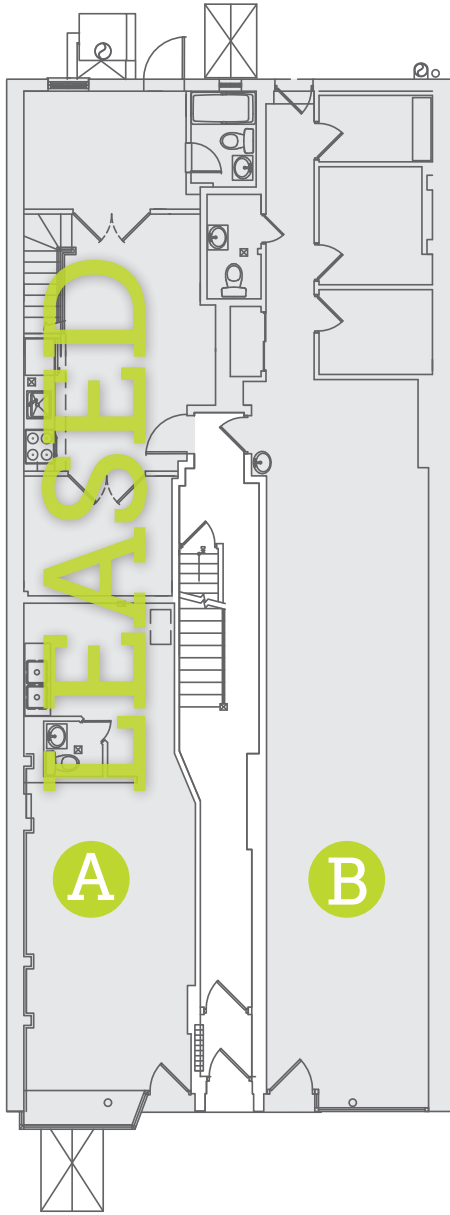
For further information, please contact our exclusive agent:

HYMIE M. DWECK 212.372.2060 hdweck@ngkf.com
JOSEPH COLISTA 212.372.2191 jcolista@ngkf.com

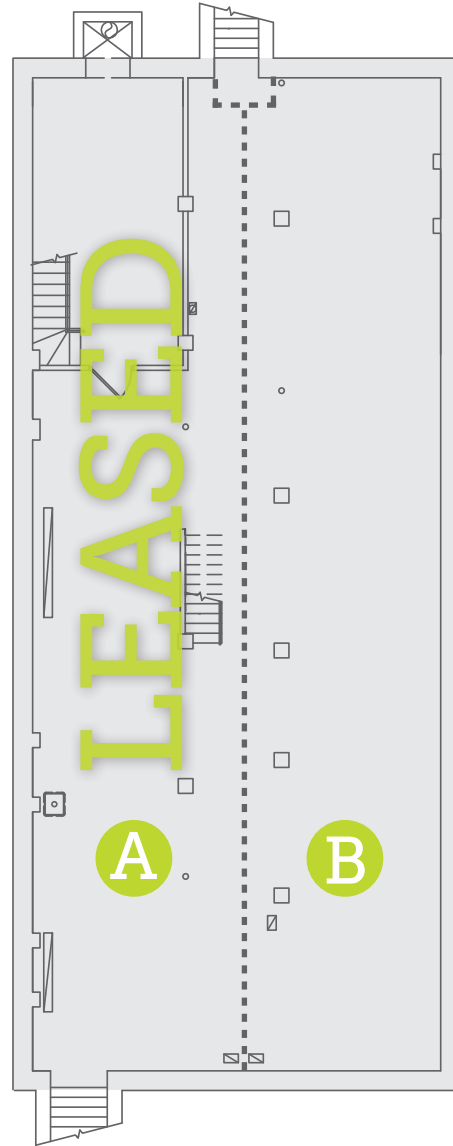
www.ngkf.com/retail

Floor Plans.

Ground Floor



Basement



For further information, please contact our exclusive agent:

HYMIE M. DWECK 212.372.2060 hdweck@ngkf.com
JOSEPH COLISTA 212.372.2191 jcolista@ngkf.com

**Newmark Grubb
Knight Frank**

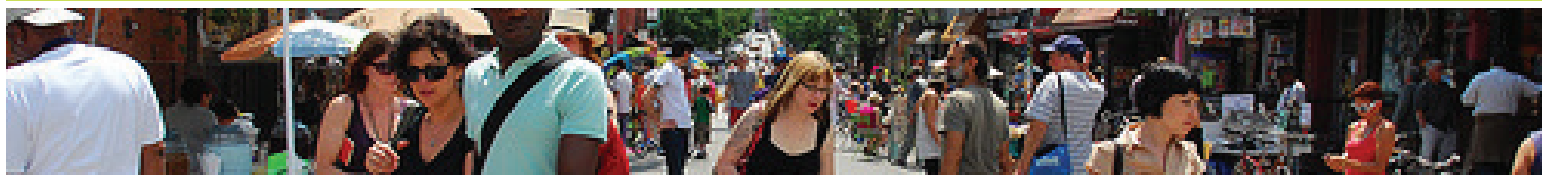
Retail

www.ngkf.com/retail

Procuring broker shall only be entitled to a commission, calculated in accordance with the rates approved by our principal only if such procuring broker executes a brokerage agreement acceptable to us and our principal and the conditions as set forth in the brokerage agreement are fully and unconditionally satisfied. Although all information furnished regarding property for sale, rental, or financing is from sources deemed reliable, such information has not been verified and no express representation is made nor is any to be implied as to the accuracy thereof and it is submitted subject to errors, omissions, change of price, rental or other conditions, prior sale, lease or financing, or withdrawal without notice and to any special conditions imposed by our principal.



Be a part of Williamsburg.



For further information, please contact our exclusive agent:

HYMIE M. DWECK 212.372.2060 hdweck@ngkf.com
JOSEPH COLISTA 212.372.2191 jcolista@ngkf.com

**Newmark Grubb
 Knight Frank**
 Retail

www.ngkf.com/retail

Procuring broker shall only be entitled to a commission, calculated in accordance with the rates approved by our principal only if such procuring broker executes a brokerage agreement acceptable to us and our principal and the conditions as set forth in the brokerage agreement are fully and unconditionally satisfied. Although all information furnished regarding property for sale, rental, or financing is from sources deemed reliable, such information has not been verified and no express representation is made nor is any to be implied as to the accuracy thereof and it is submitted subject to errors, omissions, change of price, rental or other conditions, prior sale, lease or financing, or withdrawal without notice and to any special conditions imposed by our principal.

