

HILLCREST BUILDING

18704 Bothell Way NE | Bothell, WA

Full Building **11,337 SF** Jewel Box
Office Building Available in
Downtown Bothell



Hillcrest Building is
within walking distance
of Downtown Bothell's
urban amenities.

Your business location is important for *engaging and enriching the work environment* of your employees. Hillcrest Building is located in Downtown Bothell, *an up-and-coming urban location* where employees can walk to cafés and delis for lunch, pubs for after work happy hour or dinner, or run daily errands nearby. *Everything is within walking distance* to the Hillcrest Building.

BRODERICK
• GROUP •

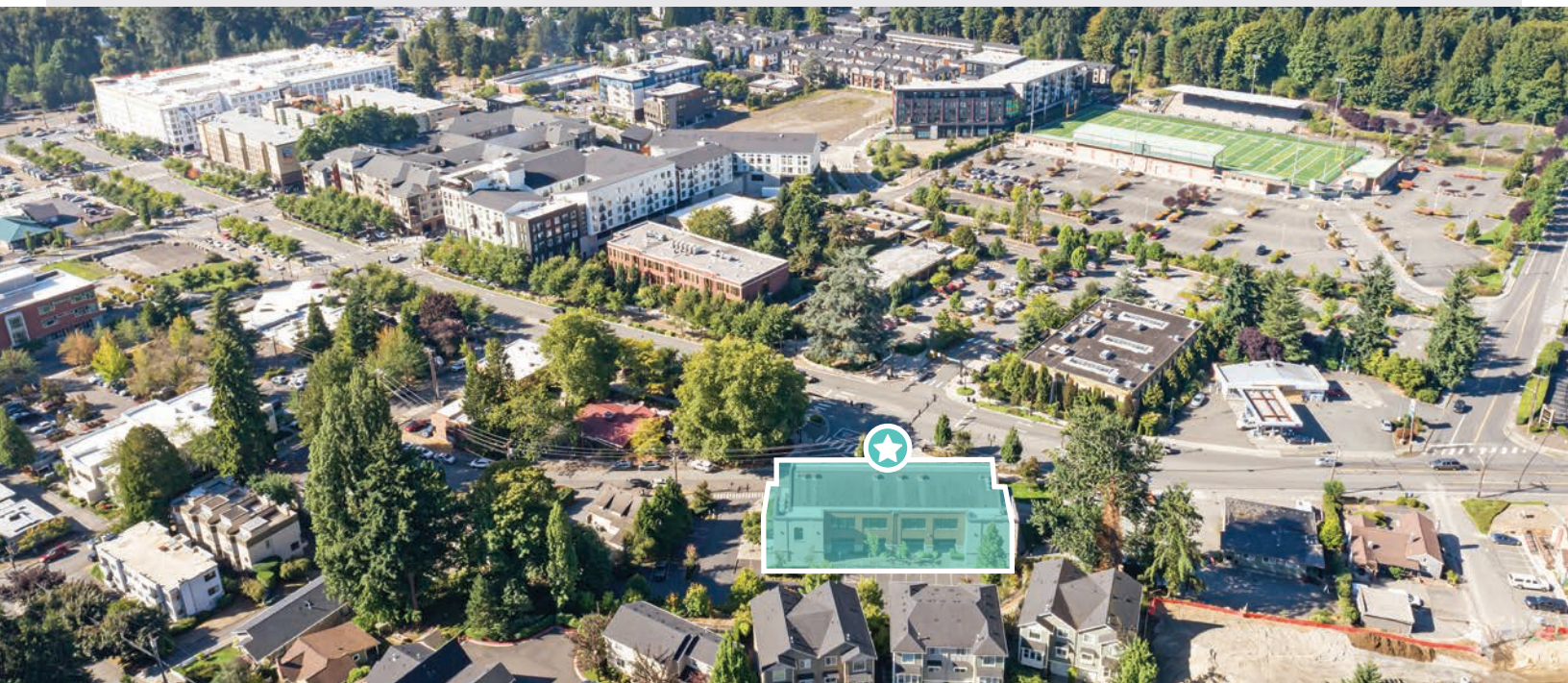
TYLER SLONE
(425) 274-4281
slone@broderickgroup.com

PAUL JERUE
(425) 646-5223
jerue@broderickgroup.com

HILLCREST BUILDING

18704 Bothell Way NE | Bothell, WA

DOWNTOWN BOTHELL Urban Amenities Await



Available Space for Lease

- 5,936 SF Second Floor
- 5,401 SF First Floor
- 11,337 SF Total
- Available now

Building Features

- Building signage available
- Showers Room
- Parking Ratio: Approximately 3.88/1,000 (44 stalls)
- Asking Rate: \$29.00, Net

Notable Amenities

- Within Walking Distance: Cafe Ladro, Pop Keeney Field, Bothell Landing and the Sammamish River Trail
- Transit: ST 522 Express is a few blocks away on SR-522 and provides express service to downtown Seattle in about 30 minutes
- Apartment complexes include The 104 Apartments, Six Oaks, Element, Junction, POP and The Merc



TYLER SLONE
(425) 274-4281
slone@broderickgroup.com

PAUL JERUE
(425) 646-5223
jerue@broderickgroup.com

The information contained herein has been given to us by the owner or other sources that we deem reliable. We have no reason to doubt its accuracy, but we do not guarantee it. Prospective tenants should carefully verify all information contained herein.

HILLCREST BUILDING

18704 Bothell Way NE | Bothell, WA

ALL WITHIN A SHORT DISTANCE Neighborhood Amenities



BRODERICK
GROUP

TYLER SLONE
(425) 274-4281
slone@broderickgroup.com

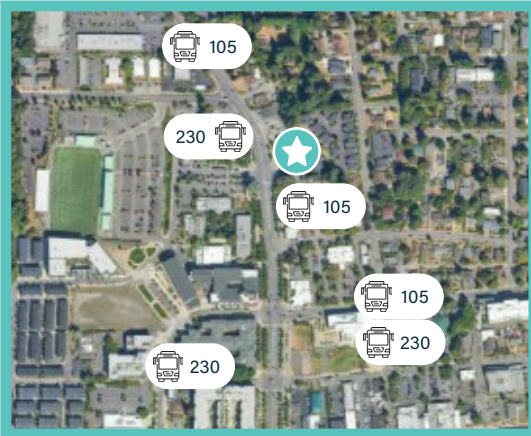
PAUL JERUE
(425) 646-5223
jerue@broderickgroup.com

The information contained herein has been given to us by the owner or other sources that we deem reliable. We have no reason to doubt its accuracy, but we do not guarantee it. Prospective tenants should carefully verify all information contained herein.

HILLCREST BUILDING

18704 Bothell Way NE | Bothell, WA

CENTRAL DOWNTOWN LOCATION Transportation Options



Community Transit Bus Routes 105 and 238 service stops are located within walking distance from Hillcrest Building.

Access to two of the regions main thoroughfares, I-405 and I-5, are easily accessed via SR-522, which is only minutes from the Hillcrest Building.



TYLER SLONE
(425) 274-4281
slone@broderickgroup.com

PAUL JERUE
(425) 646-5223
jerue@broderickgroup.com

HILLCREST BUILDING

18704 Bothell Way NE | Bothell, WA

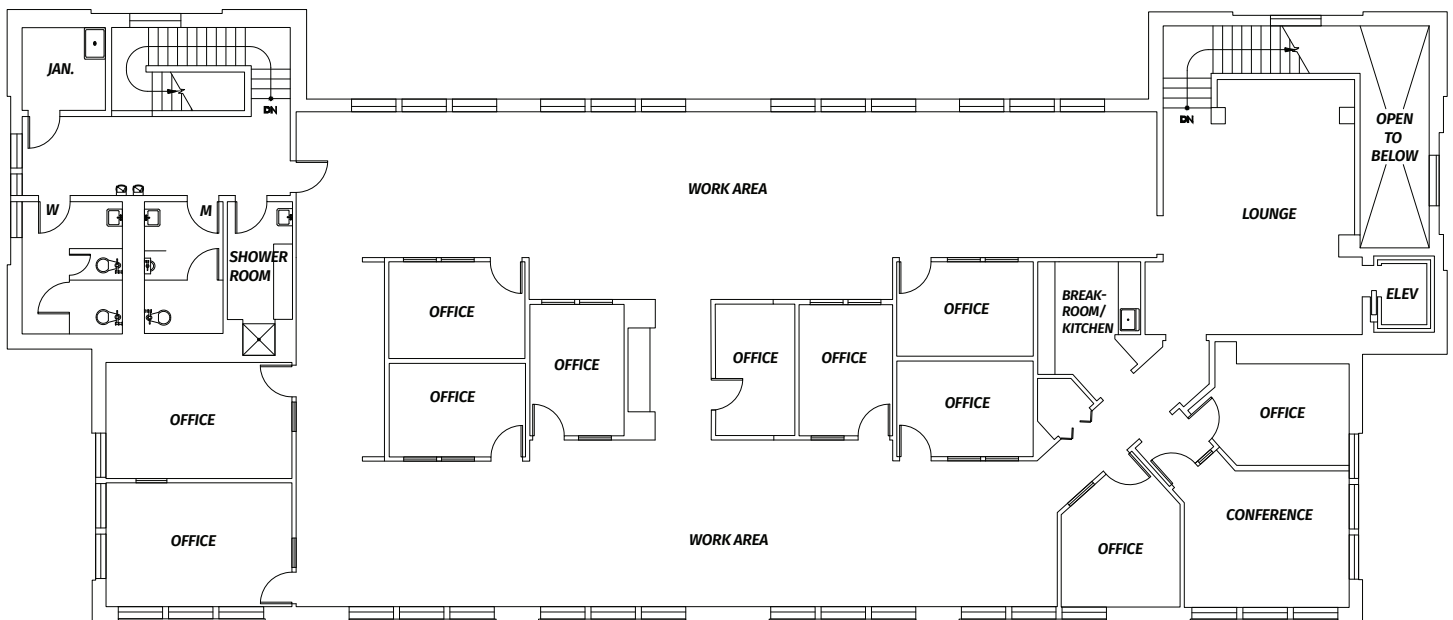
FLOOR PLAN Second Floor - 5,936 SF



2nd Floor

- 5,936 RSF

[VIEW VIRTUAL TOUR](#)



BRODERICK
GROUP

PAUL JERUE
(425) 646-5223
jerue@broderickgroup.com

TYLER SLONE
(425) 274-4281
slone@broderickgroup.com

The information contained herein has been given to us by the owner or other sources that we deem reliable. We have no reason to doubt its accuracy, but we do not guarantee it. Prospective tenants should carefully verify all information contained herein.

HILLCREST BUILDING

18704 Bothell Way NE | Bothell, WA

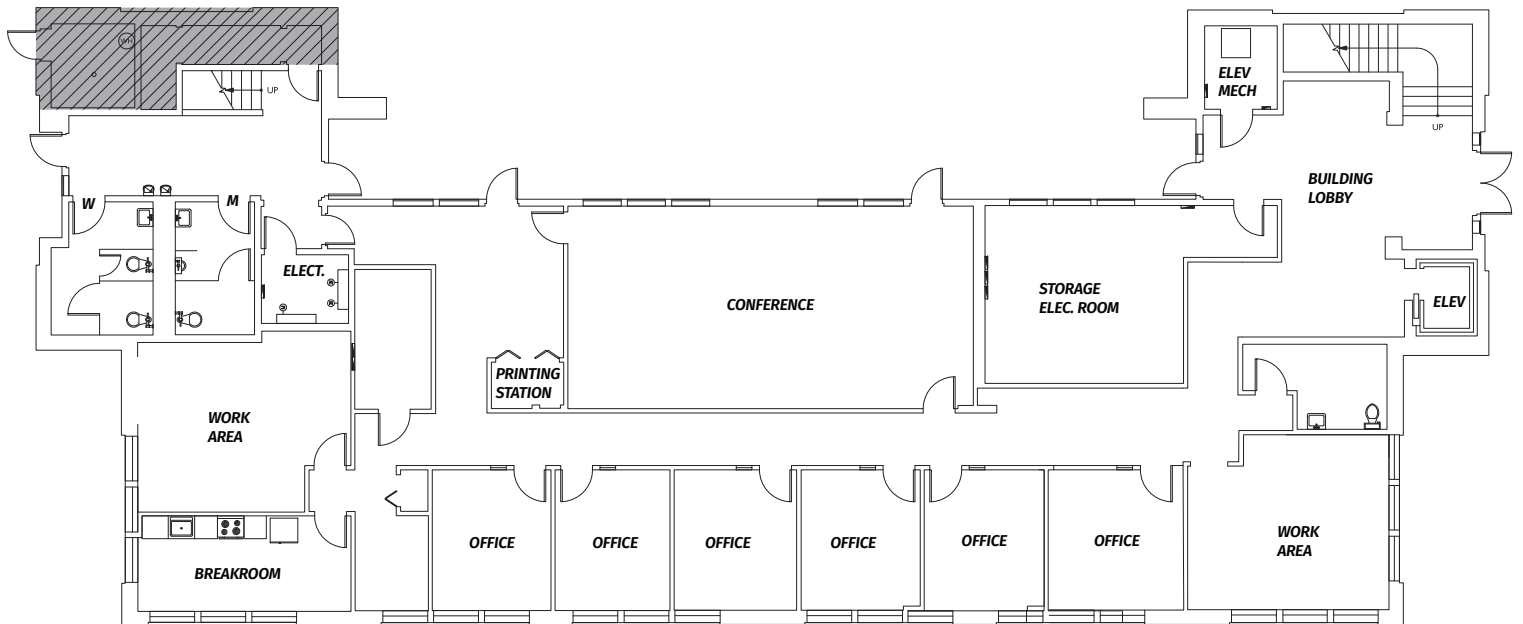
FLOOR PLAN First Floor - 5,401 SF



1st Floor

- 5,401 RSF

[VIEW VIRTUAL TOUR](#)



BRODERICK
GROUP

PAUL JERUE
(425) 646-5223
jerue@broderickgroup.com

TYLER SLONE
(425) 274-4281
slone@broderickgroup.com

The information contained herein has been given to us by the owner or other sources that we deem reliable. We have no reason to doubt its accuracy, but we do not guarantee it. Prospective tenants should carefully verify all information contained herein.