

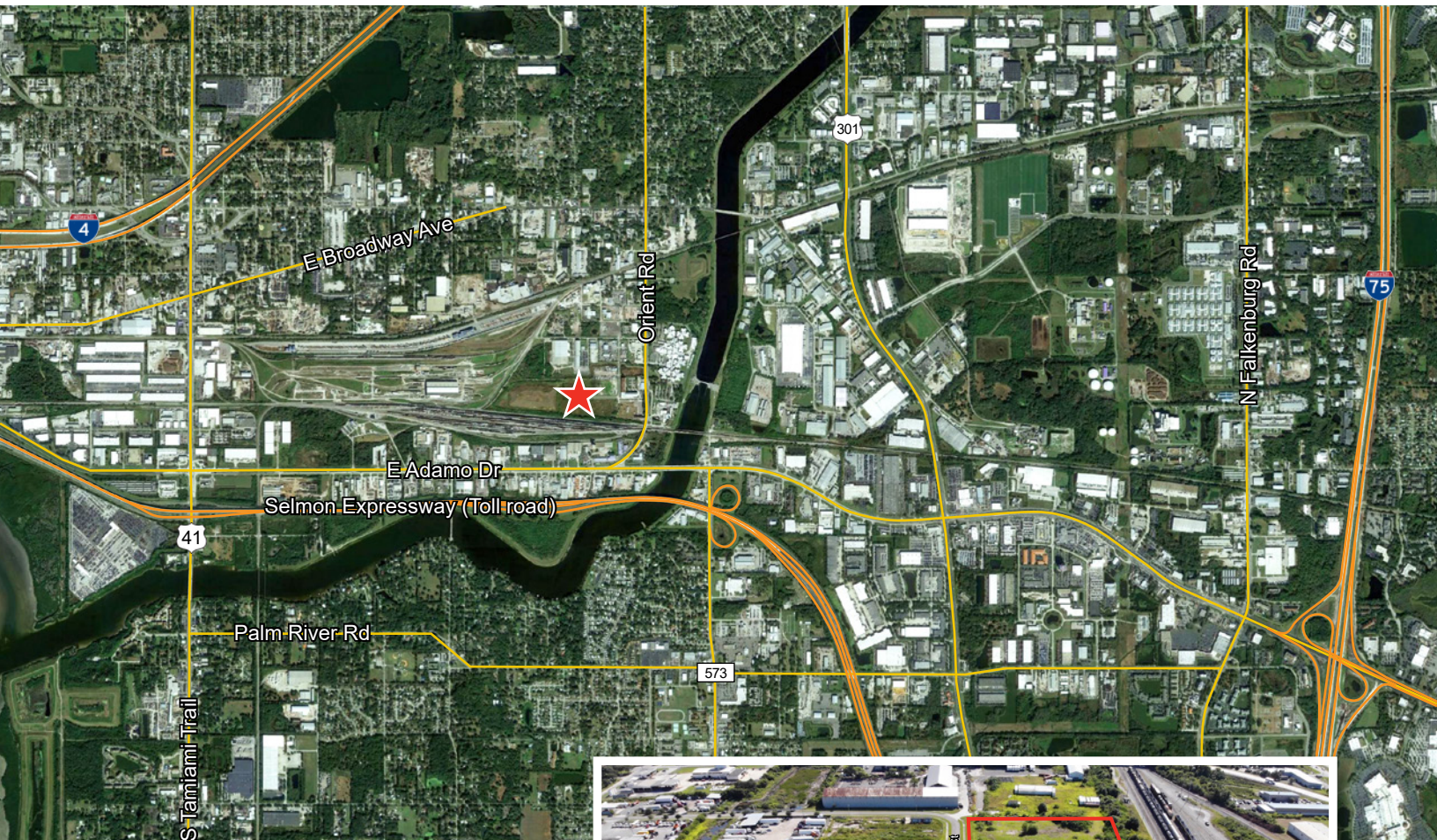
## Property Highlights

- Build-to-suit for sale or lease (14.22 acres total)
- 20,000 sf to 80,000 sf opportunities per parcel
- Potential rail access
- Outside storage available
- Zoned IH (Industrial Heavy)

**BUILD-TO-SUIT  
FOR SALE OR LEASE**

Trey Carswell, SIOR  
Principal  
813.444.0627  
trey.carswell@avisonyoung.com

Lisa Ross, SIOR  
Principal  
813.314.7798  
lisa.ross@avisonyoung.com



### Prime Location

- East Side Industrial Submarket
- 1.2 miles to the Selmon Expressway
- 5 miles to Port Tampa Bay
- Easy access to I-4 & I-75



Trey Carswell, SIOR  
Principal  
813.444.0627  
trey.carswell@avisonyoung.com

Lisa Ross, SIOR  
Principal  
813.314.7798  
lisa.ross@avisonyoung.com