



MCCARTY BUILDING

202 9TH STREET, BOISE, ID 83702

OFFICE

FOR LEASE



PROPERTY INFORMATION:

Available SF: **279 SF**

Lease Rate: **\$465 per month**

Lease Type: **Full Service**

Building Size: **30,591 SF**

Building Class: **B**

Year Built: **1905**

Renovated: **1998**



INTERMOUNTAIN
COMMERCIAL REAL ESTATE

380 E. Parkcenter Boulevard
Suite 290
Boise, ID 83706
www.icrellc.com
(208) 429.8603 / office / (208) 429-8604 fax

LISTING AGENT:

Wendy Shoemaker
wendy@icrellc.com
o / 208.285.2611
c / 208.859.2816



MCCARTY BUILDING

202 9TH STREET, BOISE, ID 83702

EXECUTIVE SUMMARY



OFFERING SUMMARY

Available SF:	279 SF
Lease Rate:	\$465 per month (Full Service)
Building Size:	30,591 SF
Building Class:	B
Year Built:	1905
Renovated:	1998

PROPERTY HIGHLIGHTS

- High ceilings, and great architectural detail
- Great windows with urban views
- Updated lobby
- Owner is on-site

OFFICE



INTERMOUNTAIN
COMMERCIAL REAL ESTATE

380 E. Parkcenter Boulevard
 Suite 290
 Boise, ID 83706
www.icrellc.com
 (208) 429.8603 / office / (208) 429-8604 fax

LISTING AGENT:

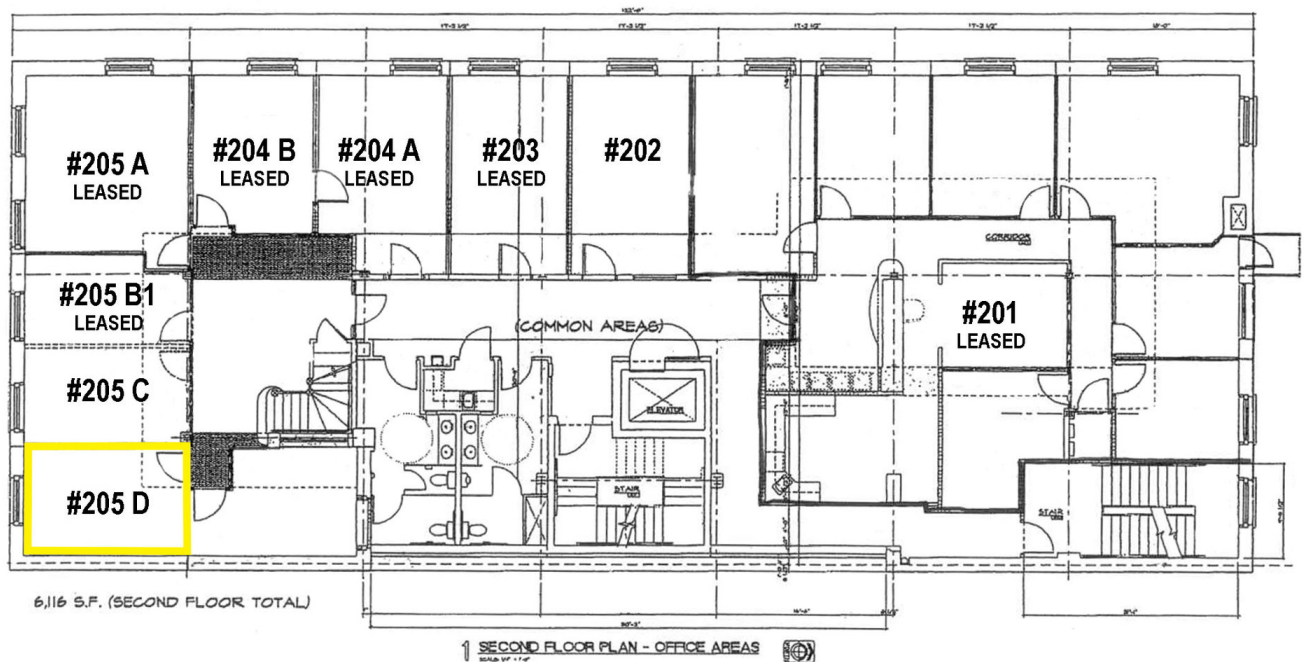
Wendy Shoemaker
wendy@icrellc.com
 o / 208.285.2611
 c / 208.859.2816



MCCARTY BUILDING

202 9TH STREET, BOISE, ID 83702

SECOND FLOOR PLAN



OFFICE



INTERMOUNTAIN
COMMERCIAL REAL ESTATE

380 E. Parkcenter Boulevard
Suite 290
Boise, ID 83706
www.icrellc.com
(208) 429.8603 / office / (208) 429-8604 fax

LISTING AGENT:

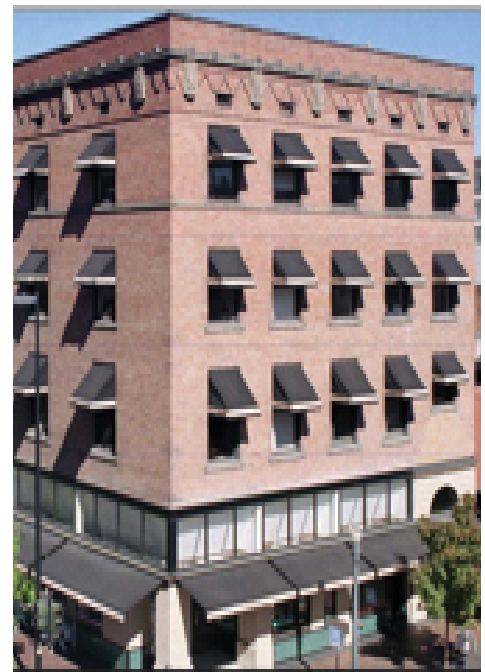
Wendy Shoemaker
wendy@icrellc.com
o / 208.285.2611
c / 208.859.2816



MCCARTY BUILDING

202 9TH STREET, BOISE, ID 83702

ADDITIONAL PHOTOS



OFFICE



INTERMOUNTAIN
COMMERCIAL REAL ESTATE

380 E. Parkcenter Boulevard
Suite 290
Boise, ID 83706
www.icrellc.com
(208) 429.8603 / office / (208) 429-8604 fax

LISTING AGENT:

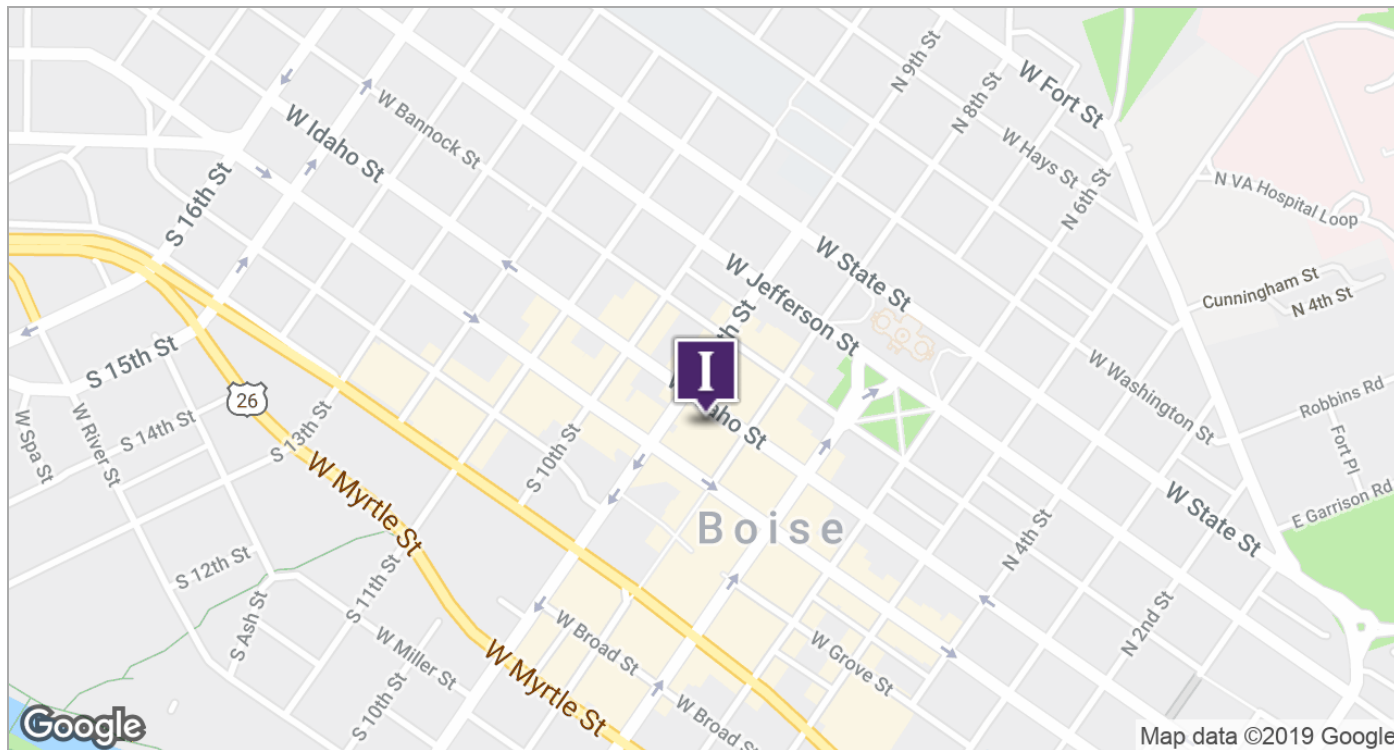
Wendy Shoemaker
wendy@icrellc.com
o / 208.285.2611
c / 208.859.2816



MCCARTY BUILDING

202 9TH STREET, BOISE, ID 83702

LOCATION MAPS



OFFICE



INTERMOUNTAIN
COMMERCIAL REAL ESTATE

380 E. Parkcenter Boulevard
Suite 290
Boise, ID 83706
www.icrell.com
(208) 429.8603 / office / (208) 429-8604 fax

LISTING AGENT:

Wendy Shoemaker
wendy@icrell.com
o / 208.285.2611
c / 208.859.2816