

FOR LEASE

FARMINGTON HILLS OFFICENTRE III



36500 CORPORATE DRIVE

FARMINGTON HILLS, MI 48331

PROPERTY FEATURES:

- Co-tenancy office with owner, Greenpath
- Up to 36,458 SF premium office space on one floor
- Open floor plan - 200 workstations and flexible meeting spaces
- On-site meeting and conference space
- Fitness center with private changing rooms and showers
- The Park Café in building
- Outdoor seating and walking trails
- Covered parking and electric car stations
- Part of the 134 acres, Farmington Hills Officecentre
- Other tenants in the Campus including Greenpath, Mercedes-Benz, Harman Automotive, Allstate Insurance and Panasonic

The information provided herein along with any attachment(s) was obtained from sources believed to be reliable, however, Friedman Real Estate makes no guarantees, warranties, or representations as to the completeness or accuracy of such information and legal counsel is advised. All information provided is subject to verification and no liability for reliance on such information or errors or omissions is assumed. The presentation of this property is submitted subject to errors, omissions, change of price or conditions, prior sale or lease, or withdrawal without notice. Copyright © 2021 Friedman Real Estate. All rights reserved.

FOR MORE INFORMATION PLEASE CONTACT:



JORDAN FRIEDMAN
jordan.friedman@freg.com



STEVE EISENSHTADT
steve.eisenshtadt@freg.com



ANDREW BOWER
andrew.bower@freg.com

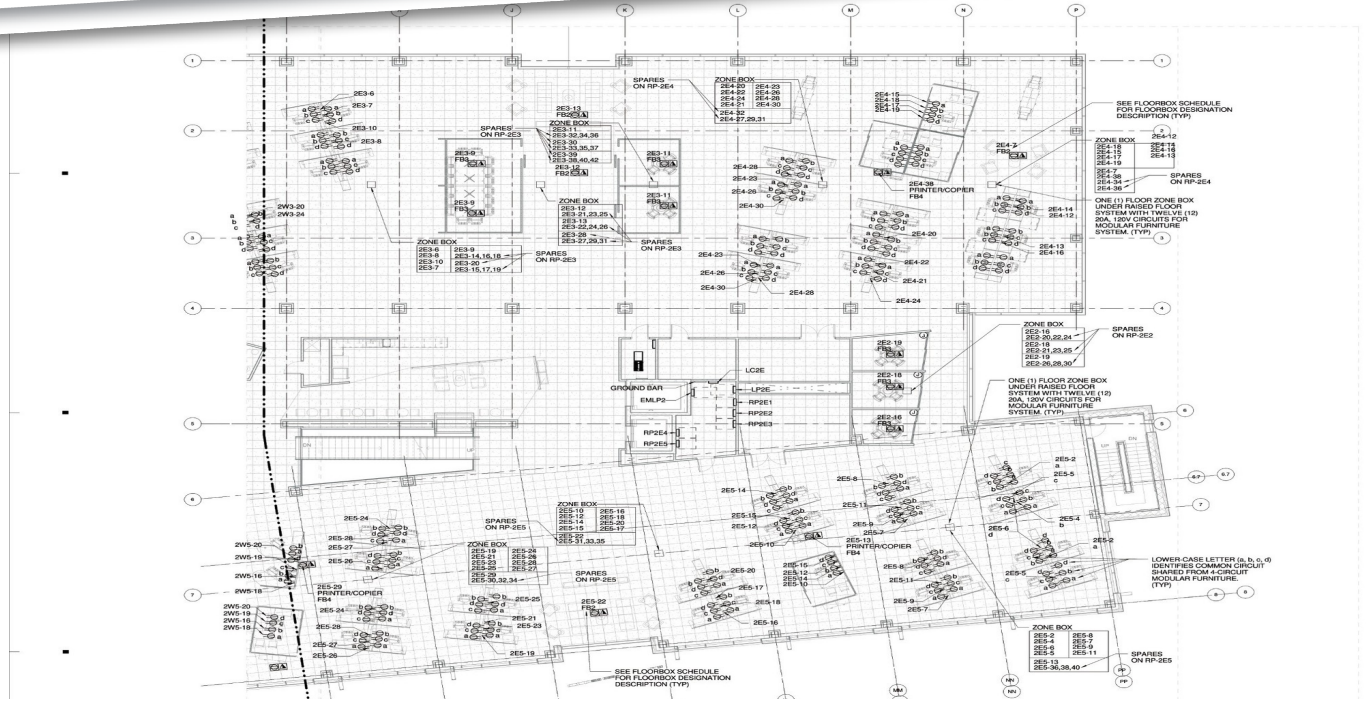
248.324.2000

eCODE 27



FARMINGTON HILLS OFFCENTRE III

PROPERTY **AVAILABILITY**



AVAILABLE SUITES

SPACE	SPACE USE	LEASE RATE	SIZE (SF)	TERM
2nd Floor	Office Building	Negotiable	36,458 SF	Negotiable



FARMINGTON HILLS OFFICENTRE III

PROPERTY **PHOTOS**



FARMINGTON HILLS OFFICENTRE III

PROPERTY **PHOTOS**



FARMINGTON HILLS OFFICENTRE III
PROPERTY PHOTOS

