



FOR LEASE

9292 North Meridian Street
Indianapolis, IN 46260



Property Highlights

- Complete common area renovation
- Close proximity to U.S. 31 and I-465
- Signalized access at 92nd Street
- 20 minutes to Indianapolis International Airport
- 20 minutes to downtown Indianapolis
- Abundant parking

For more information, contact:

David A. Moore, SIOR, CCIM
+1 317 690 0617
david.moore@cushwake.com

Darrin L. Boyd, SIOR, CCIM
+1 317 590 8490
darrin.boyd@cushwake.com

One American Square, Suite 1800
Indianapolis, IN 46282
Main: +1 317 639 0515

IndyOfficeSpace.com
cushmanwakefield.com

Cushman & Wakefield Copyright 2018. No warranty or representation, express or implied, is made to the accuracy or completeness of the information contained herein, and same is submitted subject to errors, omissions, change of price, rental or other conditions, withdrawal without notice, and to any special listing conditions imposed by the property owner(s). As applicable, we make no representation as to the condition of the property (or properties) in question.



FOR LEASE

9292 North Meridian Street
Indianapolis, IN 46260





**CUSHMAN &
WAKEFIELD**

FOR LEASE

9292 North Meridian Street
Indianapolis, IN 46260



**9240 N.
Meridian**

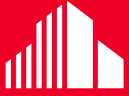
9292

MERIDIAN

**9302 N.
Meridian**

93RD STREET

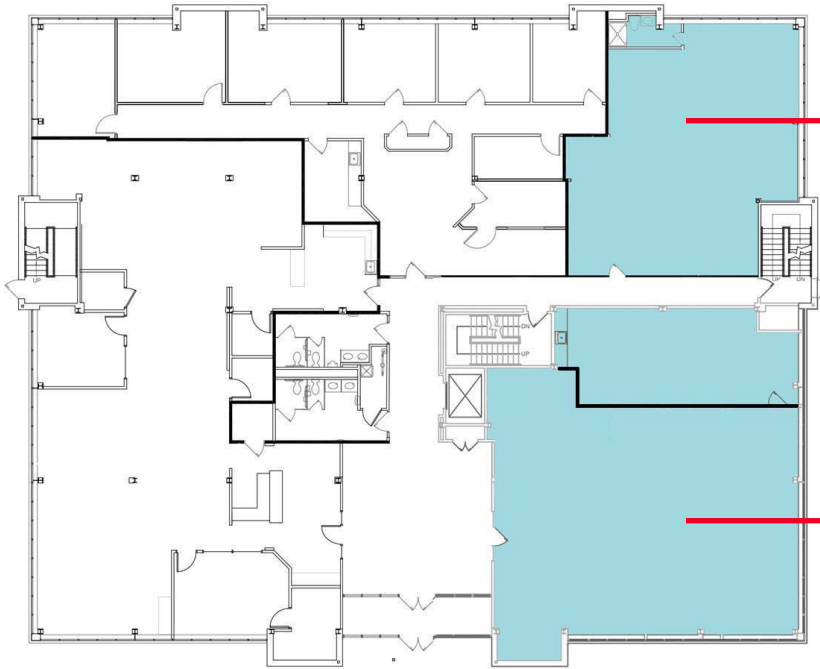
Meridian Street



**CUSHMAN &
WAKEFIELD**

FOR LEASE

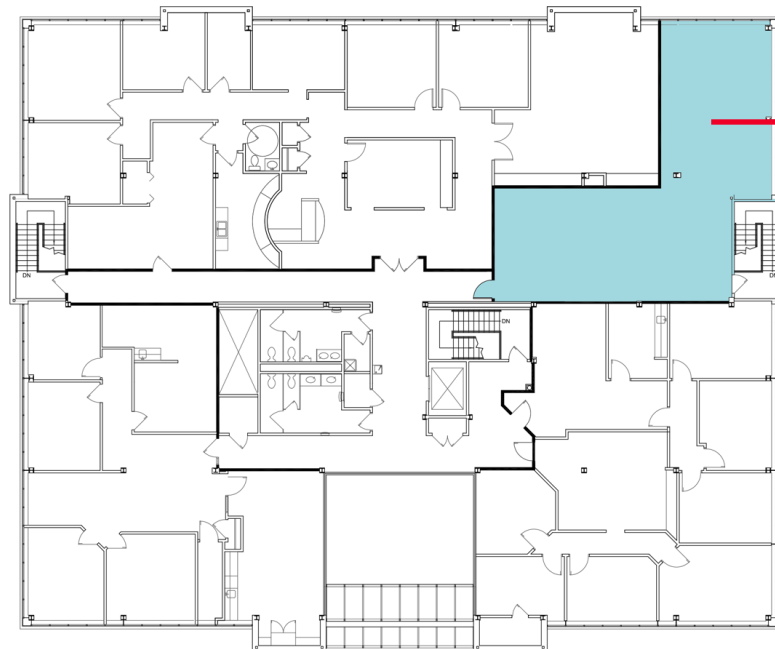
9292 North Meridian Street
Indianapolis, IN 46260



**Suite 175
Available
1,567 SF**

**Suite 125
(Entire Suite)
Available
2,760 SF**

**Suite 135
(Lower Portion Only)
Available
2,113 SF**



**Suite 325
Available
1,467 SF**

9292

MERIDIAN

Darrin L. Boyd, SIOR, CCIM
+1 317 590 8490
darrin.boyd@cushwake.com

David A. Moore, SIOR, CCIM
+1 317 690 0617
david.moore@cushwake.com

One American Square, Suite 1800
Indianapolis, IN 46282
cushmanwakefield.com
IndyOfficeSpace.com