

# 164 HAVEMEYER STREET

SOUTH WILLIAMSBURG, BROOKLYN



Robust foot traffic due to neighboring tenants, which include anything from boutique shopping to unique eateries. Located on the divide between North and South Williamsburg, 164 Havemeyer St allows for a presence of both markets. 6 Min walk from the Marcy Avenue J, M, Z, 8 Min from the Metropolitan Avenue G train and 10 Min from the Lorimer L train. This space is ideal for a multitude of uses.

## SPACE HIGHLIGHTS

### LOCATION

Havemeyer St between  
South 2nd & South 3rd

### SPACE

**Store 1 - 914 SF**  
**Store 2 - 997 SF**  
**Outdoor - 826 SF**

### FRONTAGE

**Store 1 - 11 FT**  
**Store 2 - 11 FT**

### OCCUPANCY

Immediate

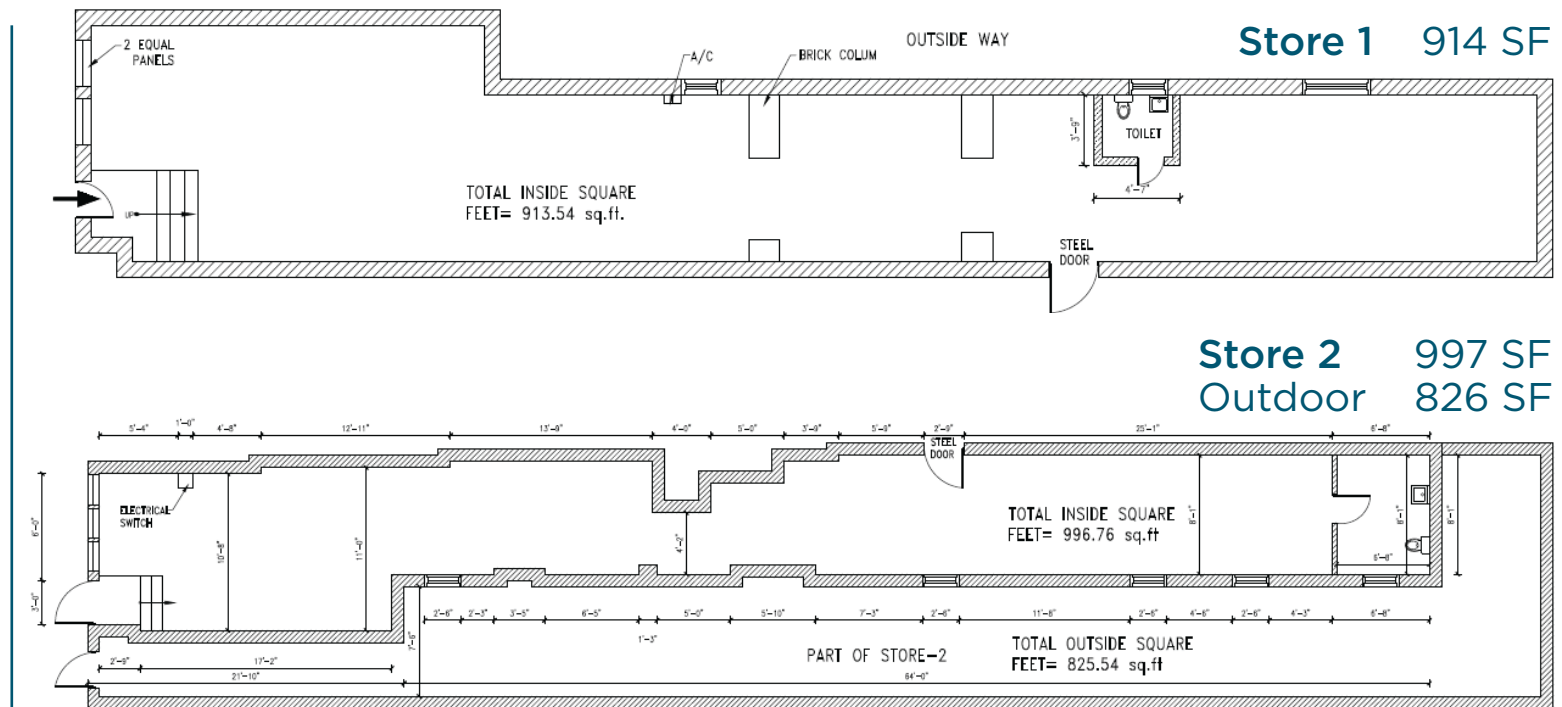
### PPSF

Upon Request

### ZONING

C1-3/R6

**HAVEMEYER ST**



# WILLIAMSBURG BROOKLYN

# 164 HAVEMEYER ST

## INTERIOR SPACE

## STORE 1



# WILLIAMSBURG BROOKLYN

# 164 HAVEMEYER ST

## INTERIOR SPACE

## STORE 2



# WILLIAMSBURG BROOKLYN

# 164 HAVEMEYER ST

## NEIGHBORHOOD & TRANSPORTATION

### NEIGHBORHOOD TENANTS

WeWork  
VICE  
Extra Fancy  
Fette Sau  
Xixa  
Blink Fitness Williamsburg  
Chase Bank  
Pies 'n' Thighs  
Traif  
Milk Bar Williamsburg  
Emmy Squared - Brooklyn  
Walter Foods  
Randolph Beer WBURG  
Sunday In Brooklyn  
Maison Premiere  
DuMont Burger  
St. Anselm  
Oslo Coffee Roasters  
Apple Williamsburg  
Whole Foods Market  
Lighthouse  
Oaxaca Taqueria  
Little Choc Apothecary  
Have A Bagel  
Peter Luger Steak House  
Weylin  
Radegast Hall & Biergarten  
Nitehawk Cinema  
Baby's All Right

### TRANSPORTATION

- 6 Min Walk at Marcy Avenue
- 9 Min Walk at Bedford Avenue
- 9 Min Walk at Metropolitan Avenue
- 10 Min Walk at Lorimer Street
- 15 Min Walk at South Williamsburg Ferry



## NEIGHBORHOOD DEMOGRAPHICS



**171,189**

Residents Are Projected To Reside In The Area By 2022



**500,000 SF**

Office/commercial Space Under Construction



**249**

Hotel Rooms Coming To The Area

### WILLIAMSBURG IS ONE OF THE MOST DENSELY POPULATED NEIGHBORHOODS IN NEW YORK CITY

With ongoing construction of new residential developments, over 171,189 residents are projected to reside within a 1-mile radius of 160 Havemeyer St by 2022.

### WILLIAMSBURG IS BECOMING A HUB FOR TECHNOLOGY AND CREATIVE FIRMS

Over 500,000 SF of office/commercial spaces are being developed at the Domino Sugar Factory, less than 10 min walk away.

### WILLIAMSBURG IS A HIGHLY SOUGHT AFTER DESTINATION FOR INTERNATIONAL TRAVELERS

249 hotel rooms are becoming available in North Williamsburg, just a few blocks away from 252 Grand Street.

**WILLIAMSBURG BROOKLYN**

**164 HAVEMEYER ST**

**CONTACT**



**BRAD KROSSER**  
**862.368.7271**  
**[bkrosser@exrny.com](mailto:bkrosser@exrny.com)**

