



LOGISTICS
PROPERTY
CO

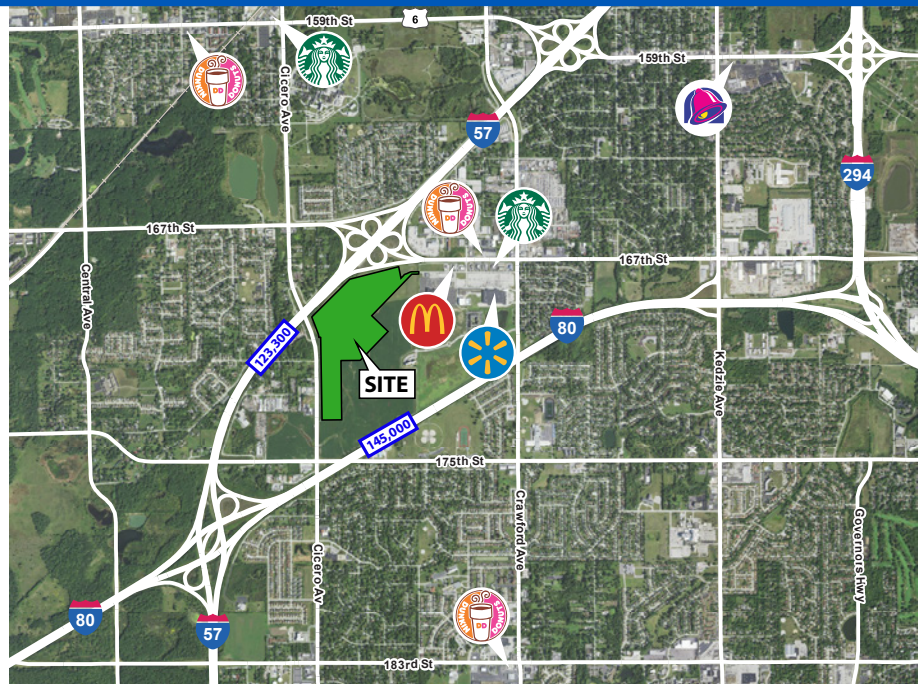
LOGIPARK 57-80

South East corner of Cicero Avenue and I-57
Country Club Hills, IL 60478



BUILDING/SITE INFORMATION

- Strategically located with high visibility along three major roads
- Four building build-to-suit development
- 130,000 – 850,000 sf with flexibility
- Immediate access to I-57 and I-80
- 25 miles to downtown Chicago
- 5 miles to Canadian National's (CN) Chicago Intermodal, located in Harvey, IL
- Excellent incentives available in TIF, Class 8 and Opportunity Zone
- Q4 2019 occupancy



T **TRANSWESTERN**[®]

L **LEE & ASSOCIATES**

Transwestern

200 West Madison Street
Suite 1200
Chicago, IL 60606

Irv Gilner

+1 312 881 7044
irv.gilner@transwestern.com

Lee & Associates

9450 West Bryn Mawr Avenue
Suite 550
Rosemont, IL 60018

Tim McCahill

+1 312 355 3044
tmccahill@lee-associates.com



**LOGISTICS
PROPERTY
CO**

LOGIPARK 57-80

South East corner of Cicero Avenue and I-57
Country Club Hills, IL 60478



T **TRANSWESTERN**[®]

L **LEE &
ASSOCIATES**

Transwestern

200 West Madison Street
Suite 1200
Chicago, IL 60606

Irv Gilner

+1 312 881 7044
irv.gilner@transwestern.com

Lee & Associates

9450 West Bryn Mawr Avenue
Suite 550
Rosemont, IL 60018

Tim McCahill

+1 312 355 3044
tmccahill@lee-associates.com