



RAYTOWN CROSSING SHOPPING CENTER

RETAIL SPACE AVAILABLE FOR LEASE

6715 - 6731 Blue Ridge Boulevard, Raytown, Missouri



Available
7,000 Sq Ft
In-Line Space

Available
3,000 Sq Ft End Cap
with Drive-Thru

LEASE RATE: \$10/SF NNN | 3,000 SF & 7,000 SF

DEMOGRAPHICS

	1 mile	3 miles	5 miles
Estimated Population	6,736	55,442	133,683
Avg. Household Income	\$56,296	\$63,920	\$60,178

- 7,000 SF in-line space and 3,000 SF end cap drive-thru
- Join Sutherlands Lumber, Extreme Grand Prix Racing, Dunkin' Donuts, Dennys, and Commerce Bank
- Great visibility to 40,000 cars per day
- Spacious parking
- Pad site available



CLICK HERE TO VIEW MORE LISTING INFORMATION

For More Information Contact:

BILL MAAS, CCIM | 816.412.7392 | bmaas@blockandco.com

DARREN SIEGEL | 816.412.7377 | dsiegel@blockandco.com

Exclusive Agents





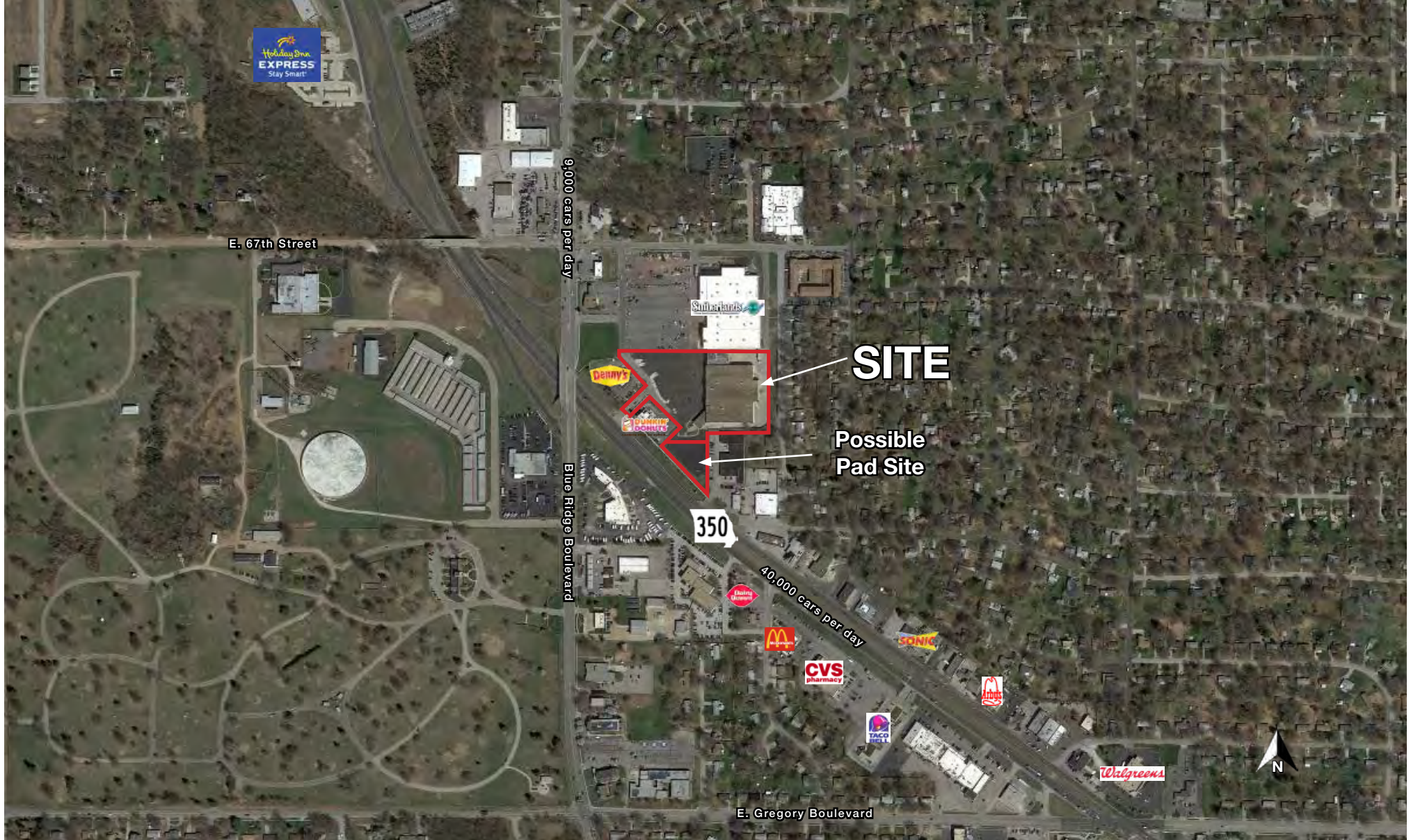
RAYTOWN CROSSING SHOPPING CENTER

RETAIL SPACE AVAILABLE FOR LEASE

6715 - 6731 Blue Ridge Boulevard, Raytown, Missouri

3,000 SF END CAP
W/ DRIVE-THRU &
7,000 SF IN LINE

AERIAL



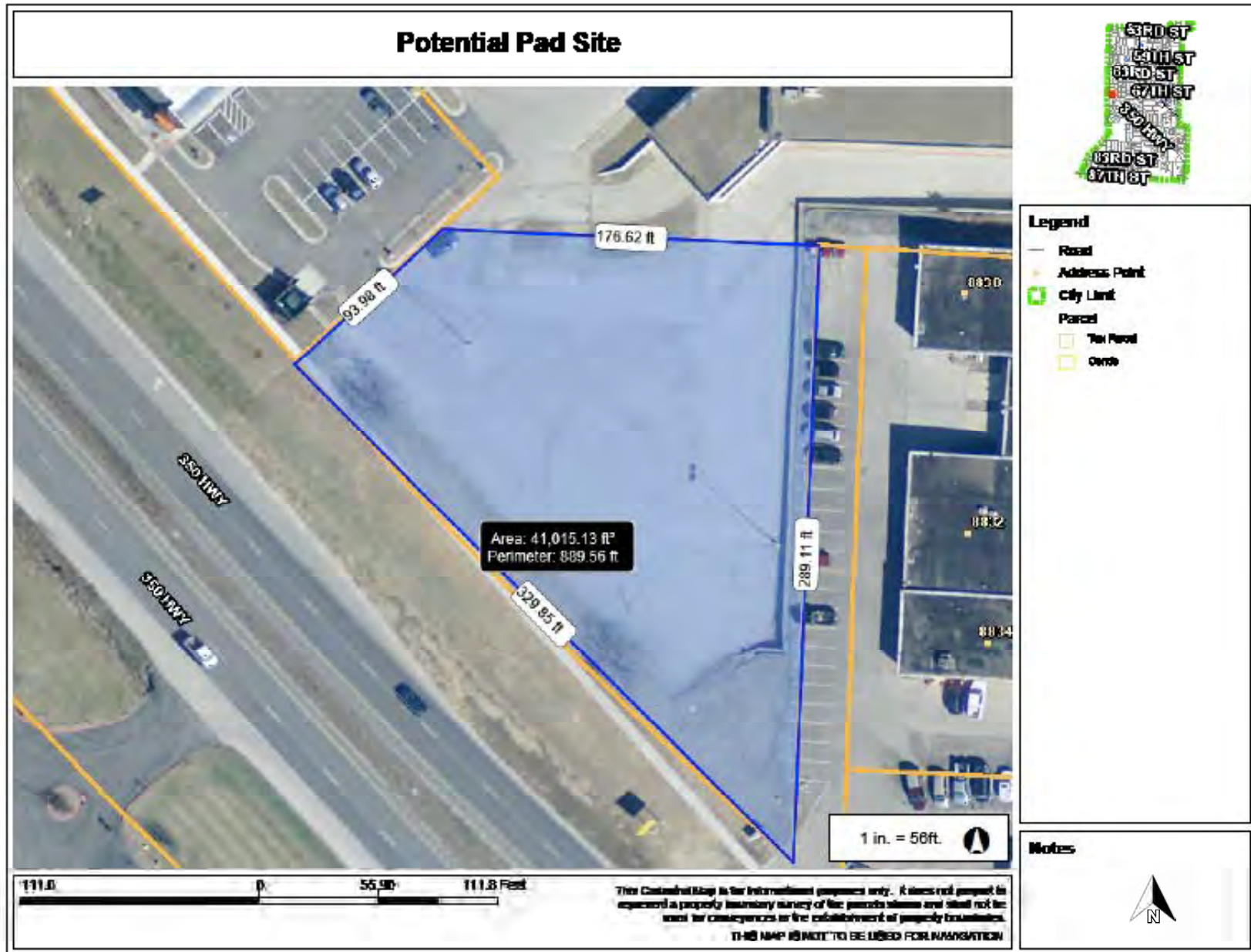


RAYTOWN CROSSING SHOPPING CENTER

RETAIL SPACE AVAILABLE FOR LEASE

6715 - 6731 Blue Ridge Boulevard, Raytown, Missouri

3,000 SF END CAP
W/ DRIVE-THRU &
7,000 SF IN LINE



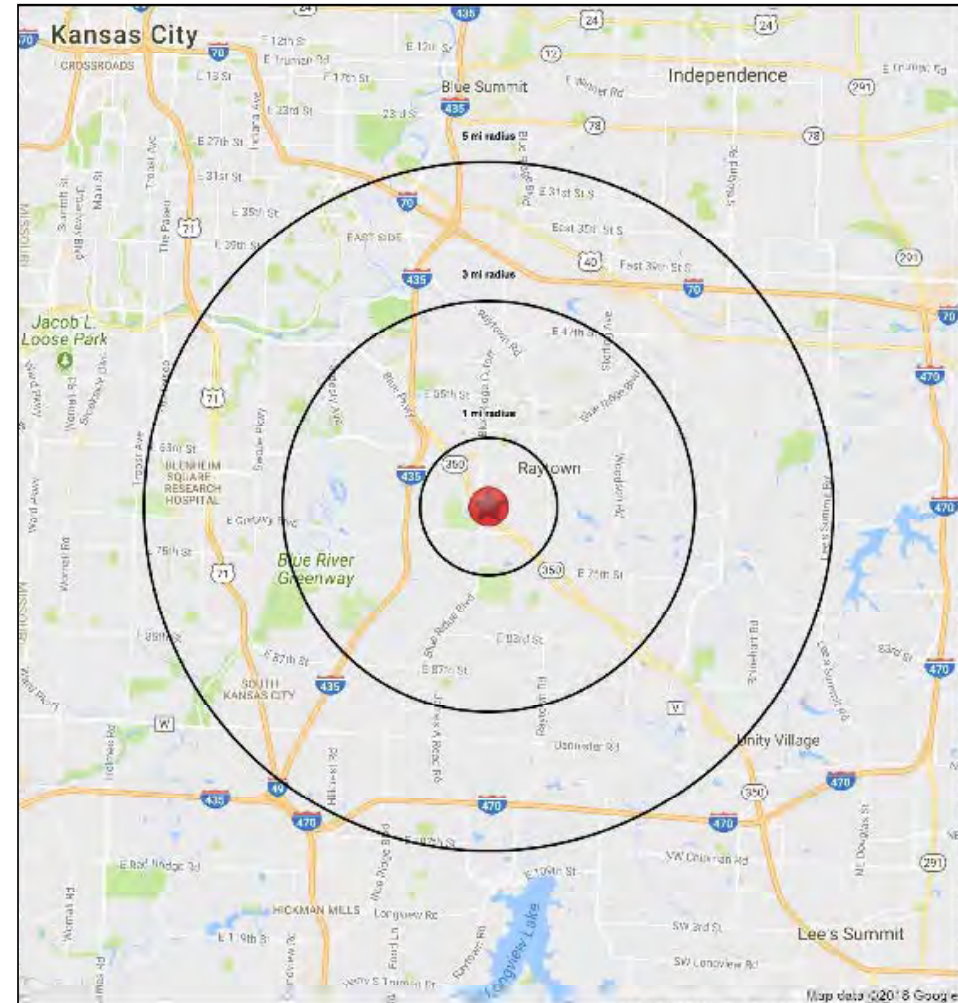
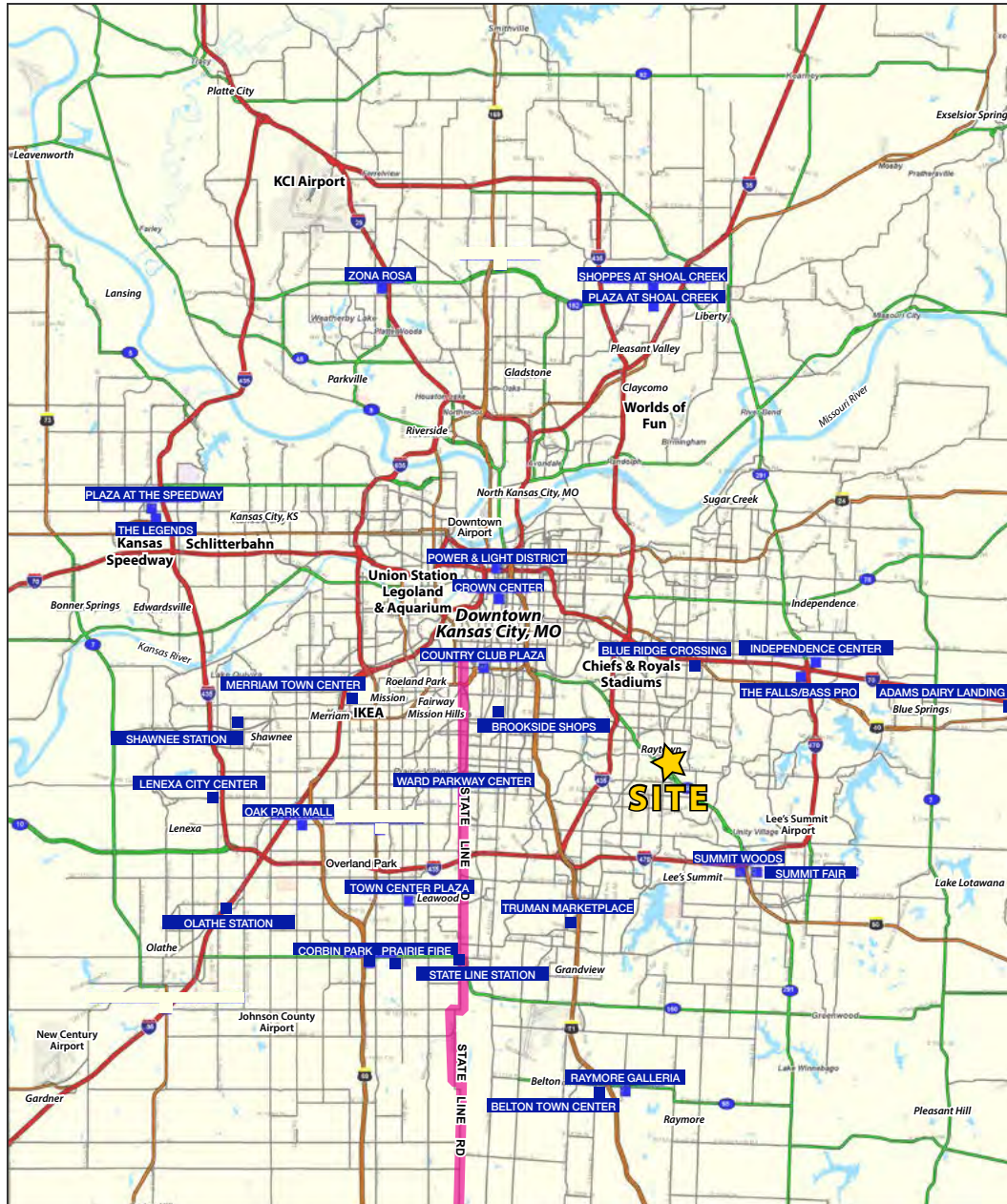


RAYTOWN CROSSING SHOPPING CENTER

RETAIL SPACE AVAILABLE FOR LEASE

6715 - 6731 Blue Ridge Boulevard, Raytown, Missouri

**3,000 SF END CAP
W/ DRIVE-THRU &
7,000 SF IN LINE**





RAYTOWN CROSSING SHOPPING CENTER

RETAIL SPACE AVAILABLE FOR LEASE

6715 - 6731 Blue Ridge Boulevard, Raytown, Missouri

6715-6731 Blue Ridge Blvd		1 mi radius	3 mi radius	5 mi radius
Raytown, MO 64133				
POPULATION	2018 Estimated Population	6,738	55,442	133,883
	2023 Projected Population	6,801	55,850	137,881
	2010 Census Population	6,842	55,522	132,183
	2000 Census Population	7,143	56,858	138,812
	Projected Annual Growth 2018 to 2023	0.2%	0.1%	0.6%
	Historical Annual Growth 2000 to 2018	-0.3%	-0.1%	-0.2%
2018 Median Age	37.5	38	38.7	
HOUSEHOLDS	2018 Estimated Households	3,038	23,421	56,784
	2023 Projected Households	3,052	23,535	58,380
	2010 Census Households	2,804	22,888	54,280
	2000 Census Households	3,171	23,588	56,932
	Projected Annual Growth 2018 to 2023	0.1%	0.1%	0.6%
	Historical Annual Growth 2000 to 2018	-0.2%	-	-
RACE AND ETHNICITY	2018 Estimated White	64.5%	58.9%	44.2%
	2018 Estimated Black or African American	28.7%	34.4%	47.8%
	2018 Estimated Asian or Pacific Islander	1.5%	1.7%	1.4%
	2018 Estimated American Indian or Native Alaskan	0.5%	0.4%	0.4%
	2018 Estimated Other Races	6.8%	6.5%	6.2%
	2018 Estimated Hispanic	8.1%	8.1%	5.8%
INCOME	2018 Estimated Average Household Income	\$56,288	\$63,820	\$68,178
	2018 Estimated Median Household Income	\$47,281	\$52,554	\$47,788
	2018 Estimated Per Capita Income	\$25,421	\$27,114	\$25,832
EDUCATION (AGE 25+)	2018 Estimated Elementary (Grade Level 0 to 8)	1.8%	2.3%	2.8%
	2018 Estimated Some High School (Grade Level 9 to 11)	5.4%	5.7%	7.8%
	2018 Estimated High School Graduate	38.1%	33.3%	35.8%
	2018 Estimated Some College	25.3%	27.8%	28.2%
	2018 Estimated Associates Degree Only	6.5%	7.8%	7.8%
	2018 Estimated Bachelors Degree Only	15.5%	15.4%	13.2%
	2018 Estimated Graduate Degree	8.4%	7.7%	8.7%
BUSINESS	2018 Estimated Total Businesses	524	1,540	3,984
	2018 Estimated Total Employees	6,585	20,148	53,885
	2018 Estimated Employee Population per Business	12.4	13.1	13.5
	2018 Estimated Residential Population per Business	12.8	38.0	33.7

