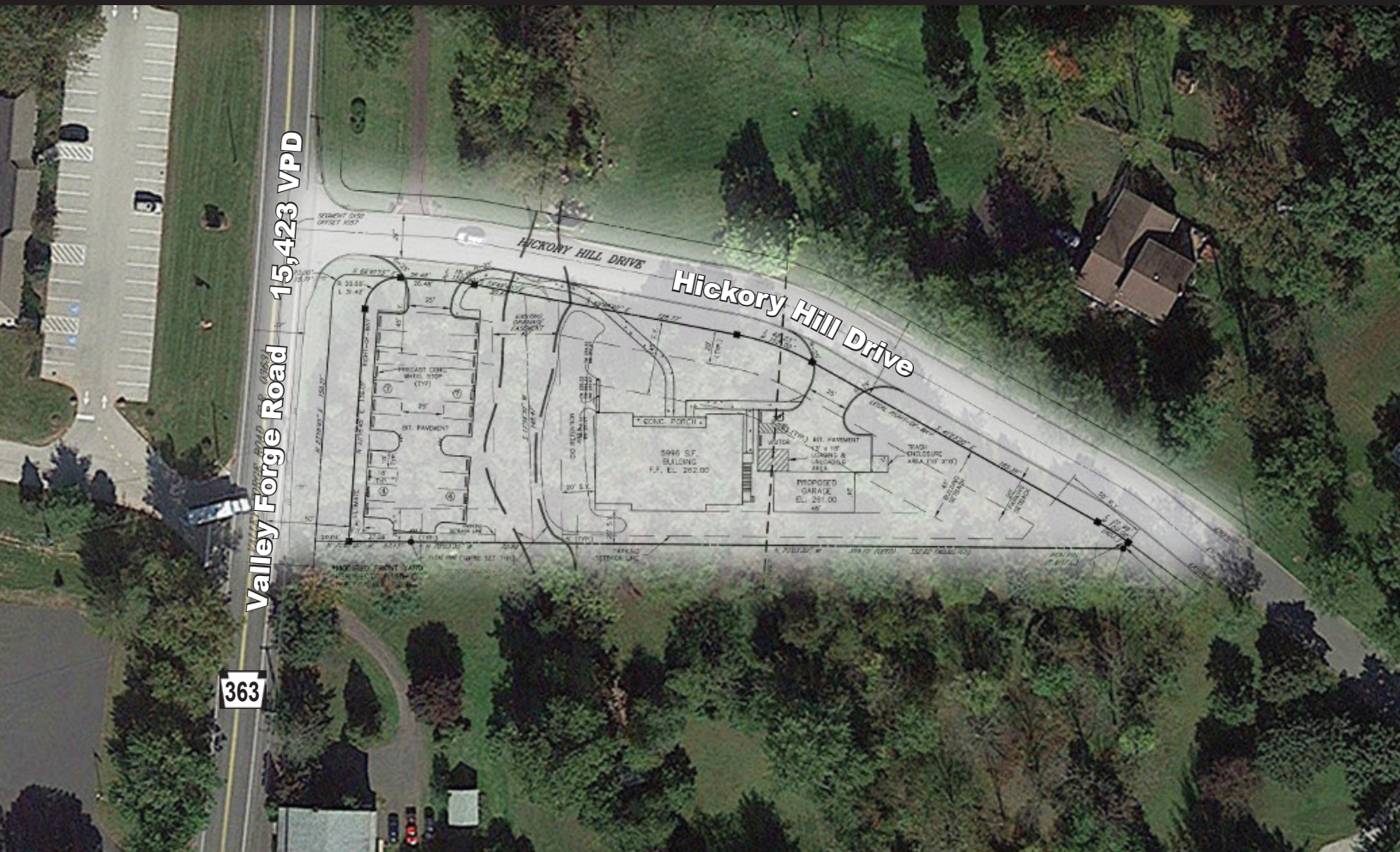


## AVAILABLE FOR SALE



- ✦ 1.4 acre development site available for sale
- ✦ Plans approved for 5,996 SF building, ideal for medical, bank, day care or low impact retail

- ✦ Situated near high-income residential neighborhoods
- ✦ Located across from Worcester Post Office and 2 miles from planned 153 acre independent living development

### DEMOGRAPHICS (\*)

	1 Mile	3 Miles	5 Miles
Population	<b>2,343</b>	<b>26,191</b>	<b>134,080</b>
Average HH Income	<b>\$173,376</b>	<b>\$136,474</b>	<b>\$105,091</b>
Total Businesses	<b>50</b>	<b>775</b>	<b>5,043</b>
Number of Employees	<b>381</b>	<b>7,116</b>	<b>61,105</b>

\* Data Source: AGS <sup>TM</sup>

**Jackie Christman**  
**484.784.7741**

jackiec@arrowrealestateservices.com



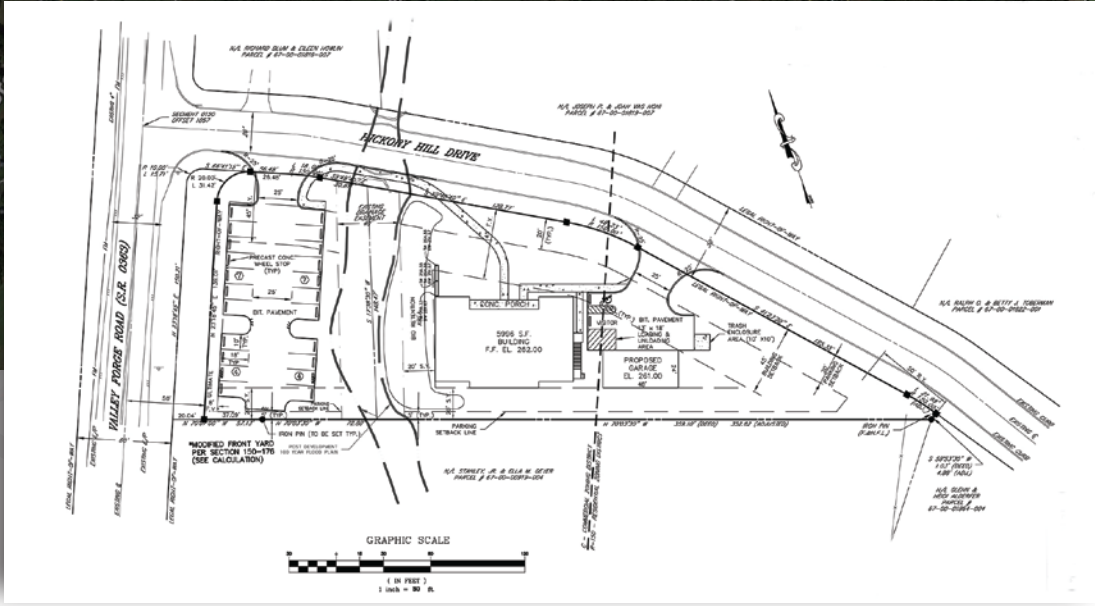
# NEW DEVELOPMENT

Route 363 & Hickory Hill Road | Worcester | Montgomery Co. | PA | 19490

## AVAILABLE FOR SALE



**Center Point Shopping Center**  
**DUNKIN' DONUTS**  
 Great Heart Café  
 Zacharis Creek Side Café  
 Cinderella Nails  
 Dentist  
 Worcester Beverage



**Jackie Christman**  
**484.784.7741**

jackiec@arrowrealestateservices.com

Information contained herein has been obtained from the Owner of the Property or from sources deemed reliable. We have no reason to doubt its accuracy but make no warranty or representation. All information is submitted subject to errors, omissions, changes, withdrawal without notice and any special listing conditions of the Owner. 2 0 1 5

Corporate Headquarters  
 555 Building, Bala Cynwyd, PA  
 Administrative Office  
 717 Limekiln Road, Doylestown, PA 18901

**arrowrealestateservices.com**

