

200-210 PORTAGE AVE

PALO ALTO | CALIFORNIA

AVAILABLE FOR LEASE | ±34,876 SF - DIVISIBLE TO ±14,137 SF & ±20,739 SF

AVAILABLE JANUARY 1, 2020



CHRISTIAN PRELLE
EXECUTIVE VICE PRESIDENT
650.688.8504
cpelle@ngkf.com
CA RE LIC #01888351

RANDY GABRIELSON
EXECUTIVE MANAGING DIRECTOR
650.688.8511
rgabrielson@ngkf.com
CA RE LIC #00937630

CARTER LYMAN
ASSOCIATE
650.688.8559
carter.lyman@ngkf.com
CA RE LIC #02067725

PROJECT HIGHLIGHTS

- Vaulted ceilings – 24' Clear Height
- Truly Unique Exposed Ceiling Office Space
- Highly Creative Space with well-placed Skylights Providing Abundant Natural Light
- Ideally Located Near the Prestigious Stanford Research Park
- Walking Distance to California Avenue Amenities
 - California Avenue Caltrain Station (0.4 Mile)
 - Equinox Fitness Club
 - Chipotle, Starbucks, Mollie, Stones and Over 35 Other Restaurants and Cafes
- Potential Expansion Options within the Project
- Open Efficient Layout
- Includes a Mix of Open Office Space, All-Hands Areas, Large Indoor/Outdoor Kitchen, Dining Area, Conference and Meeting Rooms, and Open Space
- Covered Outdoor Space as an extension of the office space
- Convenient Surface Level Parking; 3 Parking Spaces per 1000 SF leased
- Showers
- Please Contact Exclusive Agents to Tour
- Available January 1, 2020

±34,786 sf (divisible)

200: ±20,739 RSF Total

210: ±14,137 RSF Total

200-210
PORTAGE AVE

200-210
PORTAGE AVE



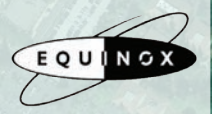
California Ave
Caltrain Station

Amenity-rich
California Ave district

Bicycle and
Pedestrian Walkway
±0.4 mi to Caltrain
(±8 min walk)

200-210
PORTAGE AVE

Stanford
Research Park



AERIAL MAP



200-210
PORTAGE AVE

200 ±20,739 RSF Total

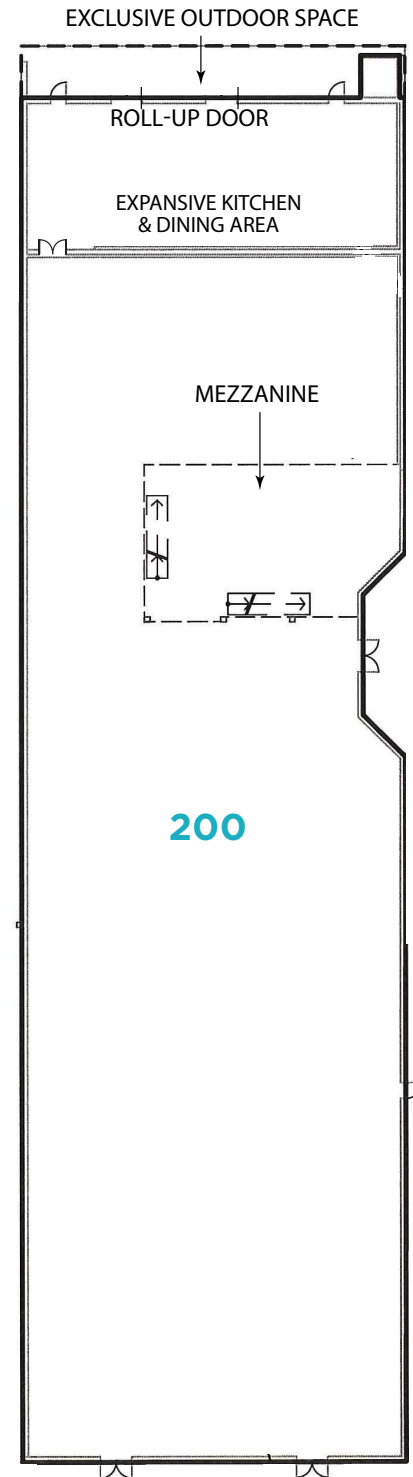
CHRISTIAN PRELLE
650.688.8504
cprelle@ngkf.com

RANDY GABRIELSON
650.688.8511
rgabrielson@ngkf.com

CARTER LYMAN
650.688.8559
carter.lyman@ngkf.com

EXISTING BUILDOUT INCLUDES:

- Mix of Open Office, All Hands Area, and Conference Rooms
- 2 Restroom Cores & Showers
- Covered Outdoor Patio
- Large Indoor/Outdoor Kitchen Area



200-210
PORTAGE AVE

210 ±14,137 RSF Total



CHRISTIAN PRELLE

650.688.8504
cprelle@ngkf.com

RANDY GABRIELSON

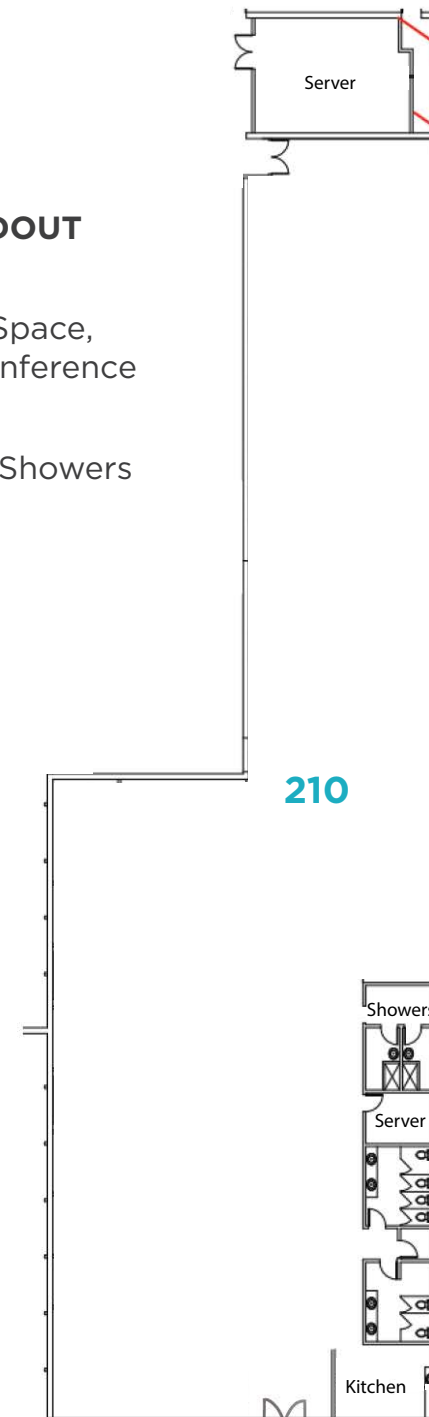
650.688.8511
rgabrielson@ngkf.com

CARTER LYMAN

650.688.8559
carter.lyman@ngkf.com

EXISTING BUILDOUT INCLUDES:

- Mix of Open Space, Meeting & Conference Rooms
- Restrooms & Showers
- Kitchenette



200-210
PORTAGE AVE

200 & 210 ±34,876 RSF Total

CHRISTIAN PRELLE
650.688.8504
cprelle@ngkf.com

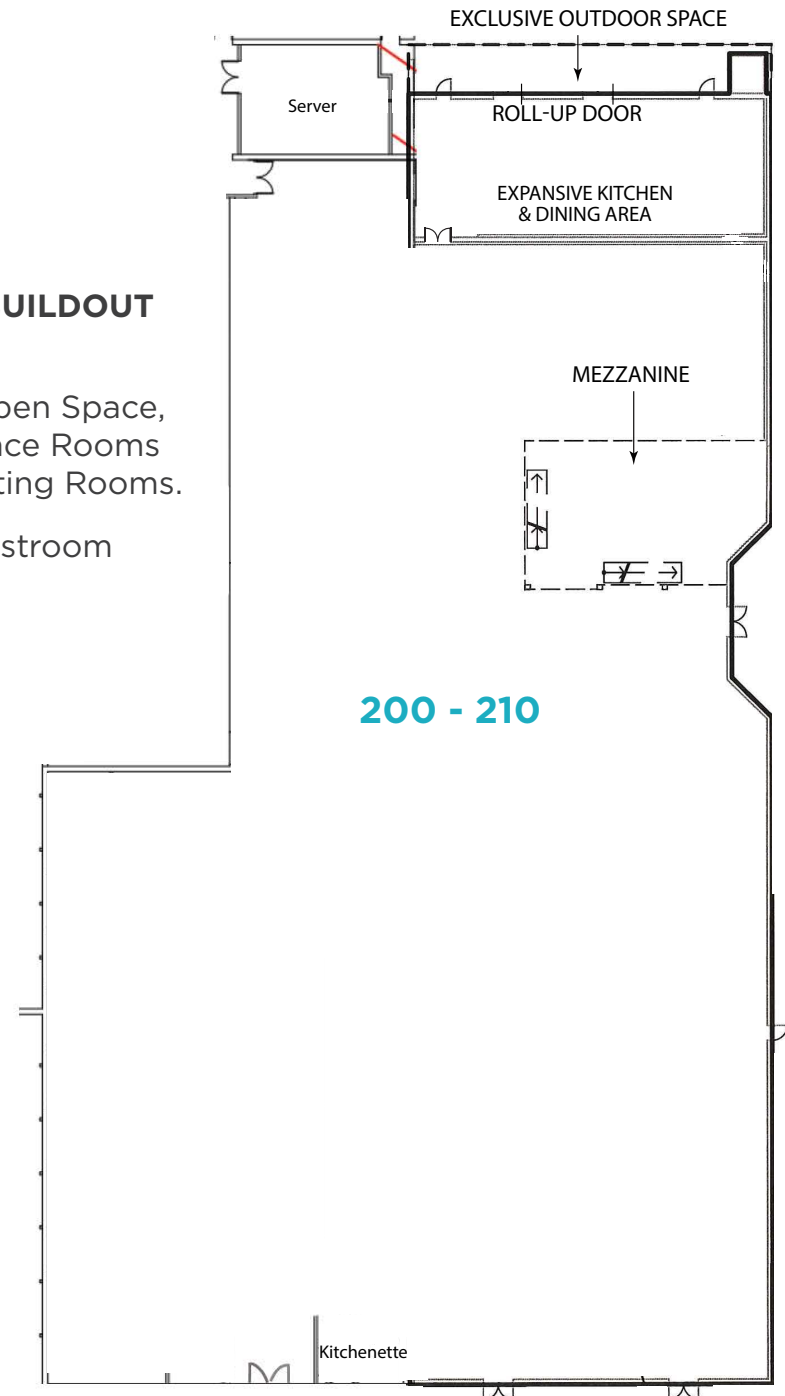
RANDY GABRIELSON
650.688.8511
rgabrielson@ngkf.com

CARTER LYMAN
650.688.8559
carter.lyman@ngkf.com

COMBINED FLOORPLAN

EXISTING BUILDOUT INCLUDES:

- Mix of Open Space, Conference Rooms and Meeting Rooms.
- Three Restroom Cores
- Showers



200-210
PORTAGE AVE



PHOTO GALLERY

200-210

PORTAGE_{AVE}

PALO ALTO | CALIFORNIA



CHRISTIAN PRELLE
EXECUTIVE VICE PRESIDENT
650.688.8504
cprelle@ngkf.com
CA RE LIC #01888351

RANDY GABRIELSON
EXECUTIVE MANAGING DIRECTOR
650.688.8511
rgabrielson@ngkf.com
CA RE LIC #00937630

CARTER LYMAN
ASSOCIATE
650.688.8559
carter.lyman@ngkf.com
CA RE LIC #02067725

245 LYTTON AVENUE, SUITE 150, PALO ALTO, CA 94301



The distributor of this communication is performing acts for which a real estate license is required. The information contained herein has been obtained from sources deemed reliable but has not been verified and no guarantee, warranty or representation, either express or implied, is made with respect to such information. Terms of sale or lease and availability are subject to change or withdrawal without notice. 14-1814.04/19