



FOR LEASE

POND ROAD PLAZA

ROUTE 9 & E. FREEHOLD ROAD • FREEHOLD, NJ

COMING SOON
TRADER JOE'S

JOIN
fortunoff
backyard store

Michaels

PETCO

STAPLES

that was easy.™

DSW
SHOE
WAREHOUSE

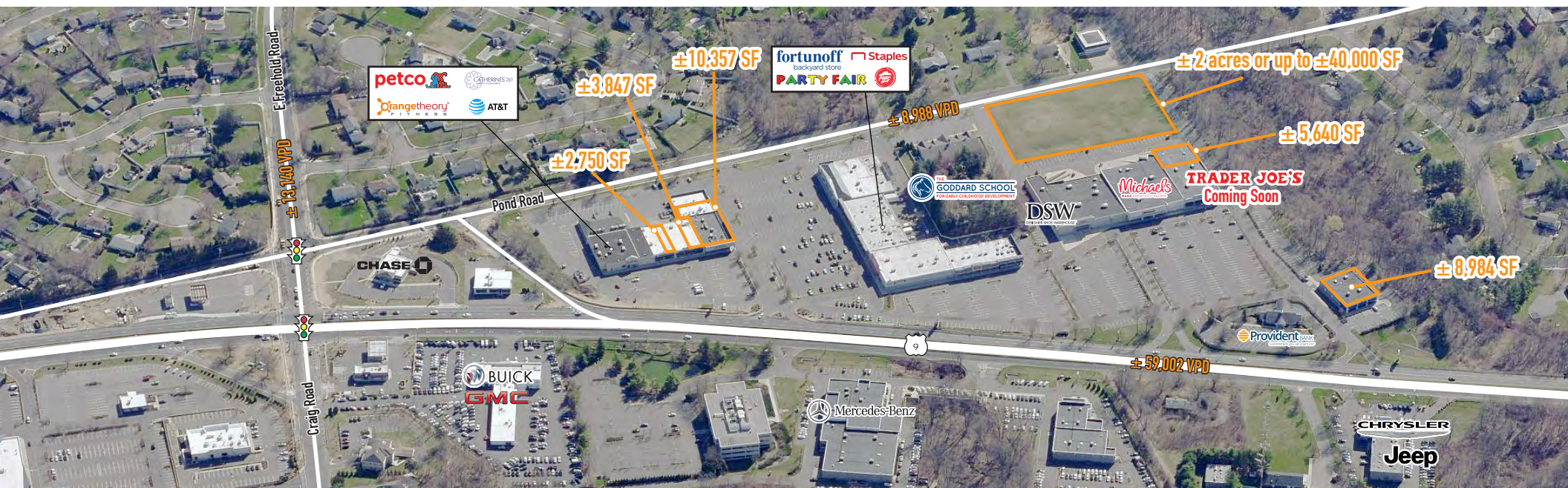
CBRE

POND ROAD PLAZA

- Outstanding community shopping center
- GLA: ± 237,000 SF
- Convenient neighborhood and regional access; 8 curb cuts
- Great tenant mix including Trader Joe's (coming soon), Petco, Staples, Michaels and DSW
- Excellent visibility to Route 9 with traffic counts exceeding 59,000 VPD
- ± 1,140 parking spaces
- Multiple pylon signs

2020 ESTIMATED	3 MILES	5 MILES	7 MILES
POPULATION	53,782	115,144	161,485
DAYTIME POPULATION	56,557	115,320	158,241
AVG HOUSEHOLD INCOME	\$144,305	\$159,066	\$161,923
MED HOUSEHOLD INCOME	\$109,098	\$120,158	\$122,190

STRONG CO-TENANCY



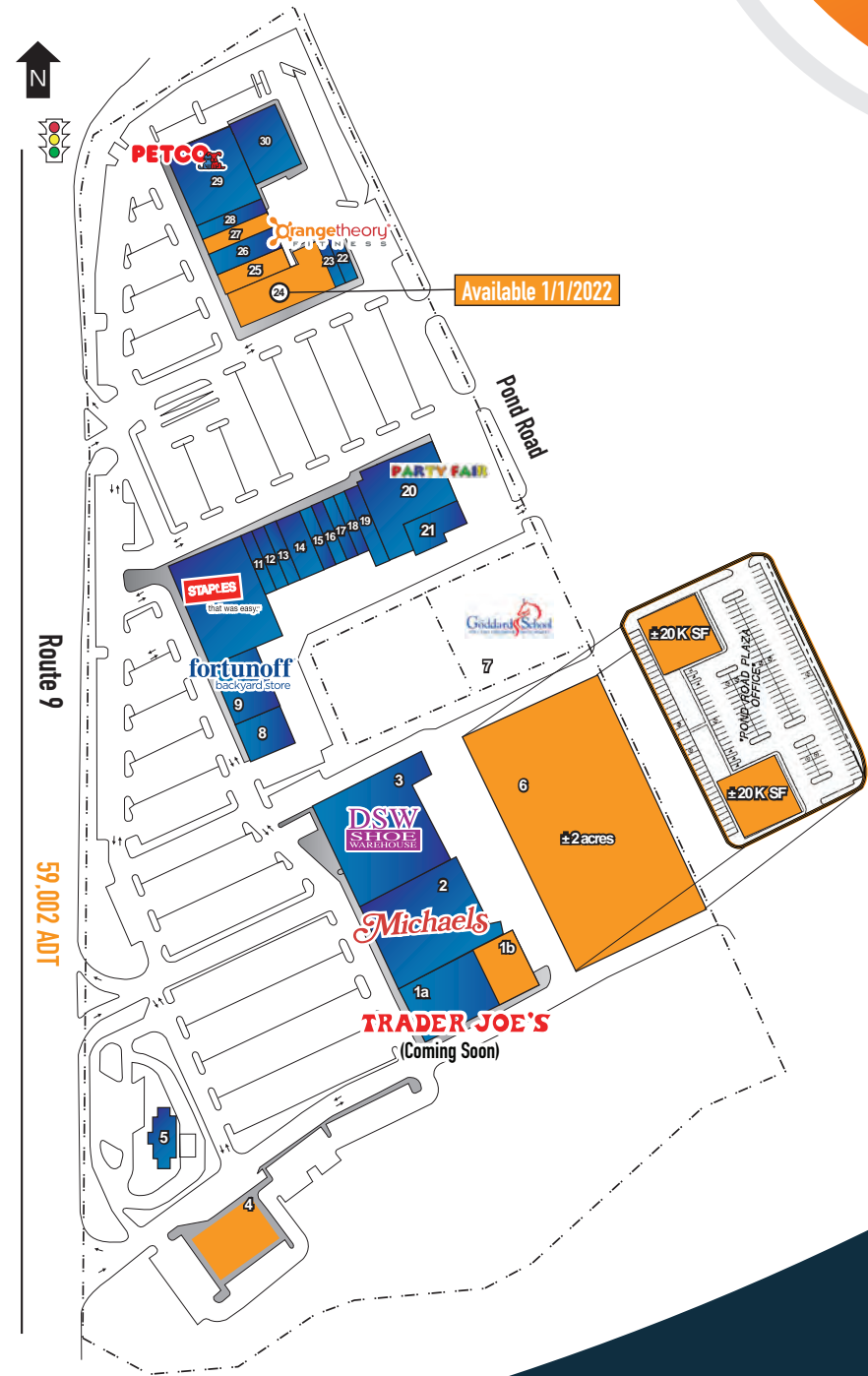
MARKET AERIAL



SITE PLAN

TENANT LIST

1. a) Trader Joe's (COMING SOON)
b) ± 5,637 SF Available
2. Michael's
3. DSW
4. ± 8,984 SF Available
5. Provident Bank
6. ± 2 Acres Land or Up to ± 40,000 SF Available
7. Future Office Space
8. Pizza Hut
9. Fortunoff Backyard Store
10. Staples
11. Attilios
12. Eli's Bagels
13. Nail Salon
14. Fred & Murray's Deli
15. Happy Feet
16. King's Chinese Restaurant
17. Bubbakoo's Burritos
18. Cleanbright Dry Cleaners
19. Act III Salon
20. Party Fair
21. Ideal Tile
22. Penny Pantry
23. Laundromat
24. ± 10,357 SF Available 1/1/2022
25. ± 3,847 SF Available
26. Orangetheory Fitness
27. ± 2,750 SF Available
28. AT&T
29. Petco
30. Office



INLINE SPACE #4

± 8,894 SF - FORMER PIER 1 IMPORTS



INLINE SPACE #24

± 10,357 SF - FORMER TOKYO HIBACHI & SUSHI BUFFET



INLINE SPACE #27

± 2,750 SF (± 25' X ± 110') - FORMER IDEAL TILE

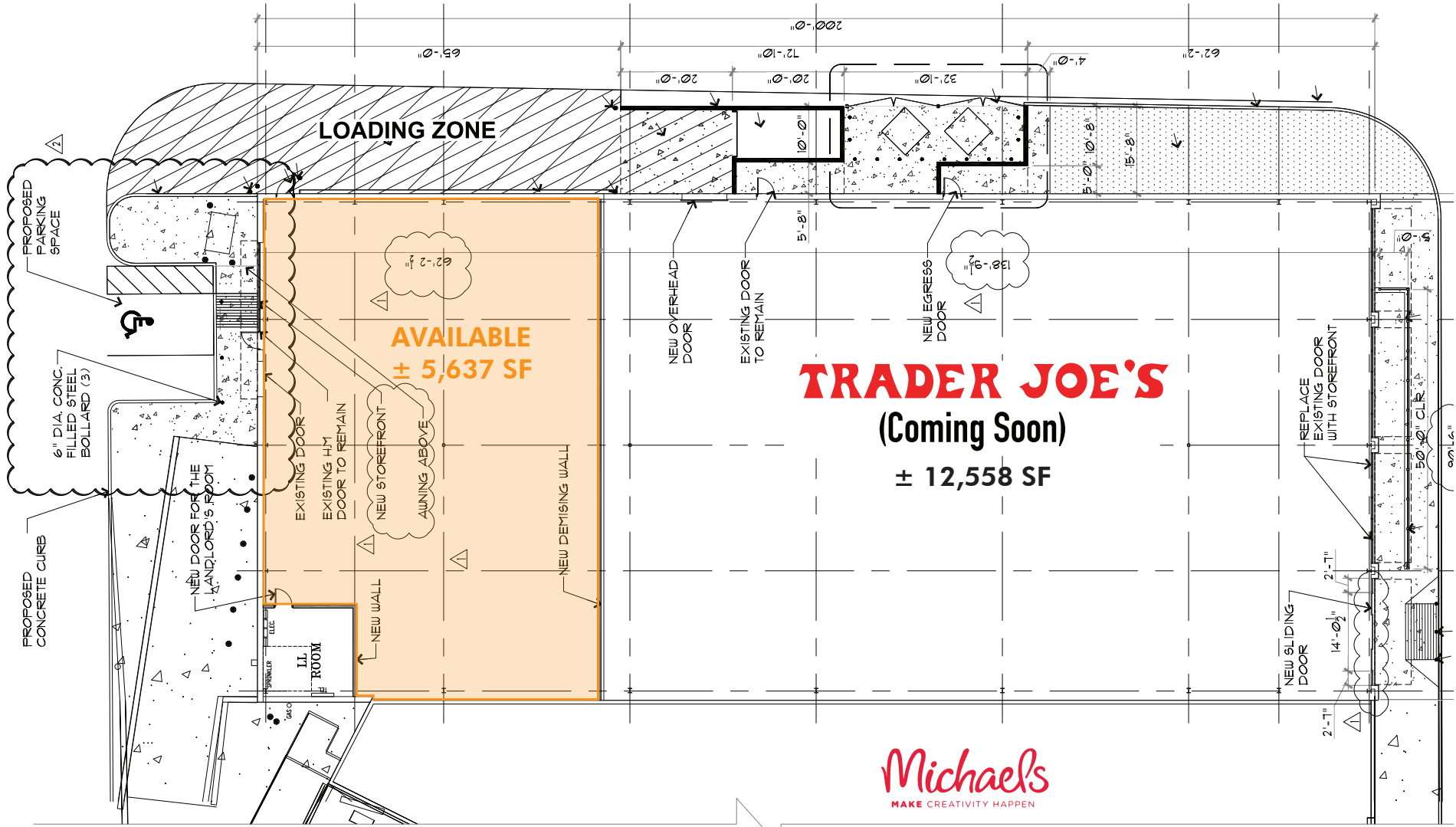
INLINE SPACE #25

± 3,847 SF (± 35' X ± 110') - FORMER CATHERINE'S



ENDCAP SPACE #1B

± 5,637 SF (± 90.6" X ± 62") - STORAGE / WAREHOUSE



AVAILABLE LAND OR FUTURE OFFICE/MEDICAL #6

± 2 ACRES OR UP TO ± 40,000 SF



CONTACT US

MICHAEL HORNE

First Vice President
+1 732 509 2866 (O)
+1 732 208 6962 (M)
mike.horne@cbre.com

Licensed Broker/Salesperson: NJ
Licensed Salesperson: PA

STEVEN WINTERS

First Vice President
+1 732 509 2867 (O)
+1 732 768 9898 (M)
steven.winters@cbre.com
Licensed Broker/Salesperson: NJ