

# ±10.23 ACRES MOUNTAIN VIEW CORRIDOR

EXCLUSIVE LISTING | HERRIMAN, UTAH



**LOCATION** The property is located in the city of Herriman, in Salt Lake County, Utah.

**SIZE** ±10.23 acres

**PARCEL** 33074000160000

**ZONING** A-1

**UTILITIES**

Water: Herriman City Water

Sewer: South Valley Sewer

Electricity: Rocky Mountain Power

Gas: Questar

**Subject**

Zachary Hartman | zhartman@landadvisors.com

6443 North Business Park Loop Road, Suite 12, Park City, Utah 84098 ph. 801.573.9181 | www.landadvisors.com

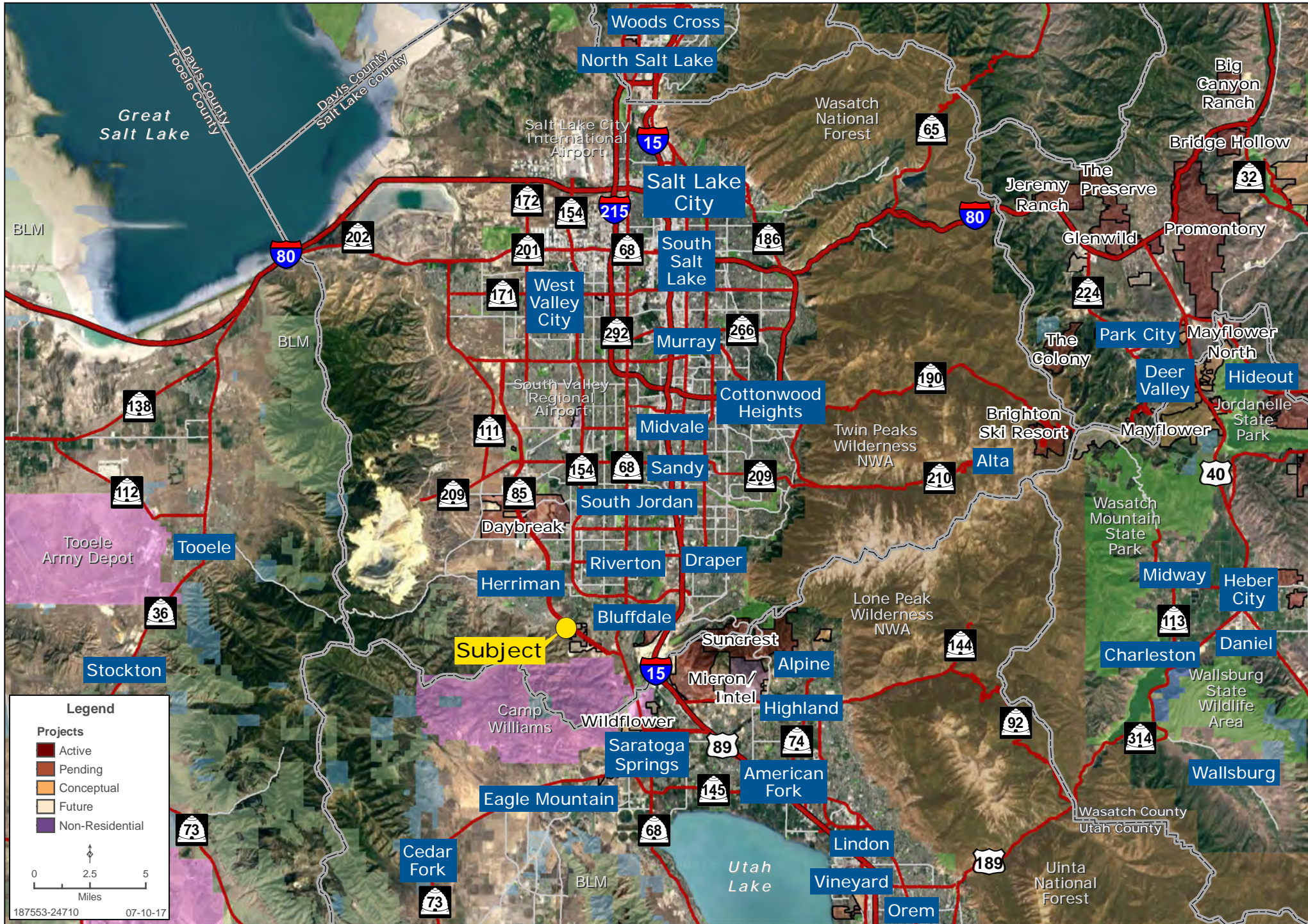
The information contained herein is from sources deemed reliable. We have no reason to doubt its accuracy but do not guarantee it. It is the responsibility of the person reviewing this information to independently verify it. This package is subject to change, prior sale or complete withdrawal. UTSaltLake187553-10.4.17

# PROPERTY PHOTOS



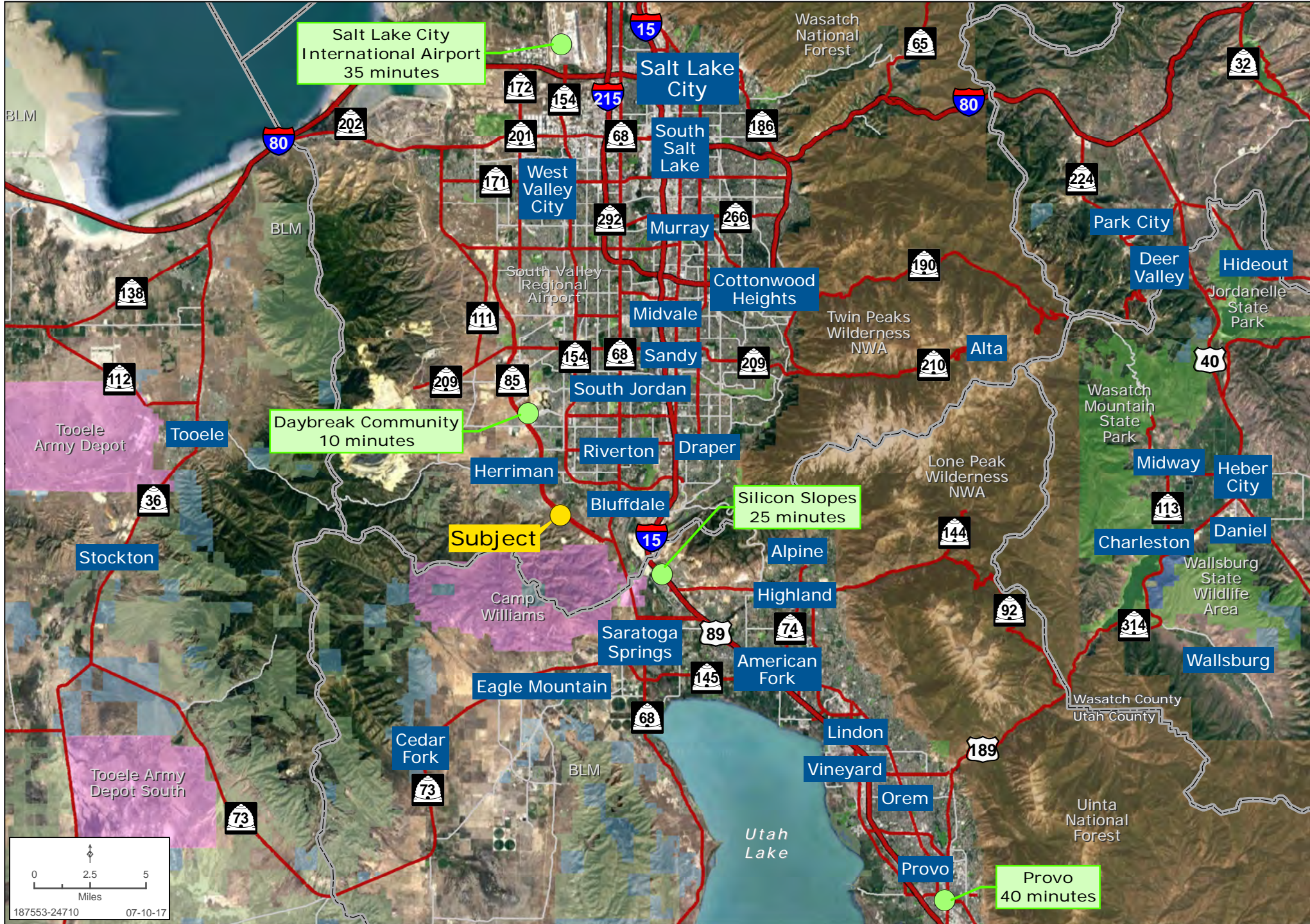
# MOUNTAIN VIEW CORRIDOR PROPERTY REGIONAL MAP

Zachary Hartman | 801.573.9181 | www.landadvisors.com



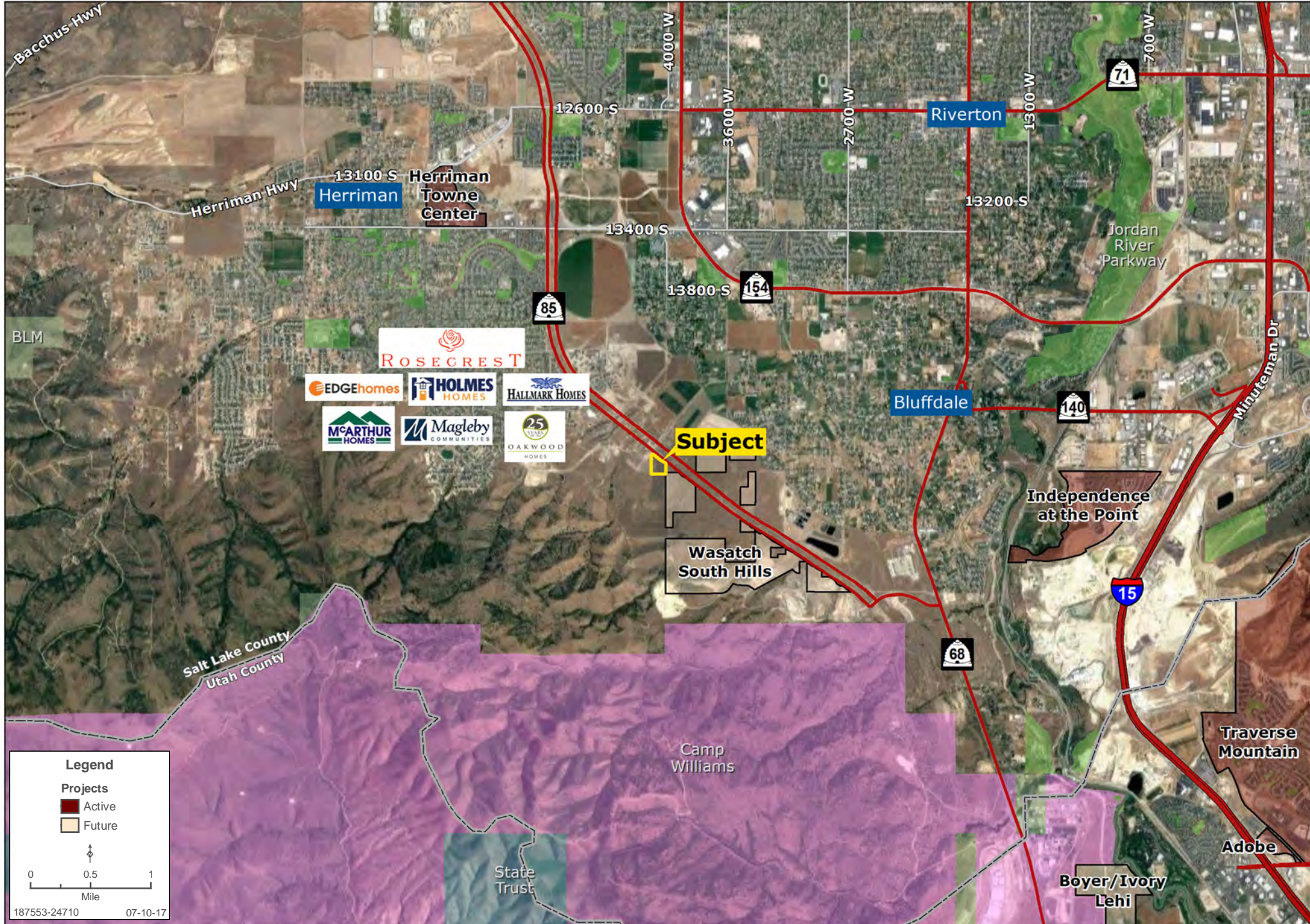
# MOUNTAIN VIEW CORRIDOR PROPERTY DRIVING DISTANCES MAP

Zachary Hartman | 801.573.9181 | www.landadvisors.com



# MOUNTAIN VIEW CORRIDOR PROPERTY SURROUNDING DEVELOPMENT MAP

Zachary Hartman | 801.573.9181 | www.landadvisors.com



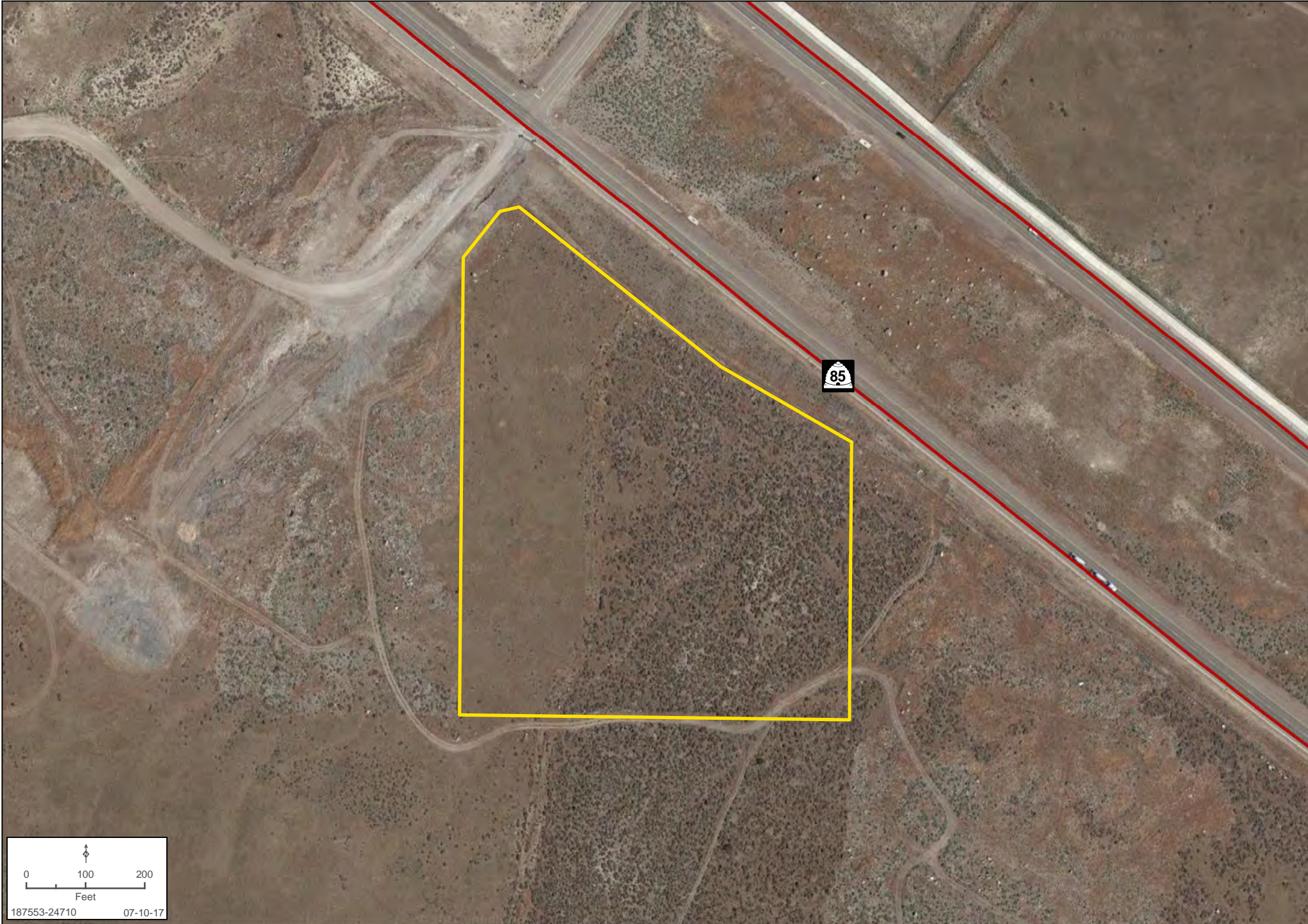
# MOUNTAIN VIEW CORRIDOR PROPERTY SURROUNDING AMENITIES MAP

Zachary Hartman | 801.573.9181 | www.landadvisors.com



# MOUNTAIN VIEW CORRIDOR PROPERTY PROPERTY DETAIL MAP

Zachary Hartman | 801.573.9181 | www.landadvisors.com



0 100 200  
Feet  
187553-24710 07-10-17

# HERRIMAN LIFESTYLE

