

64640

**COLUMBIA
STREET**

BROOKLYN

MEANS GO



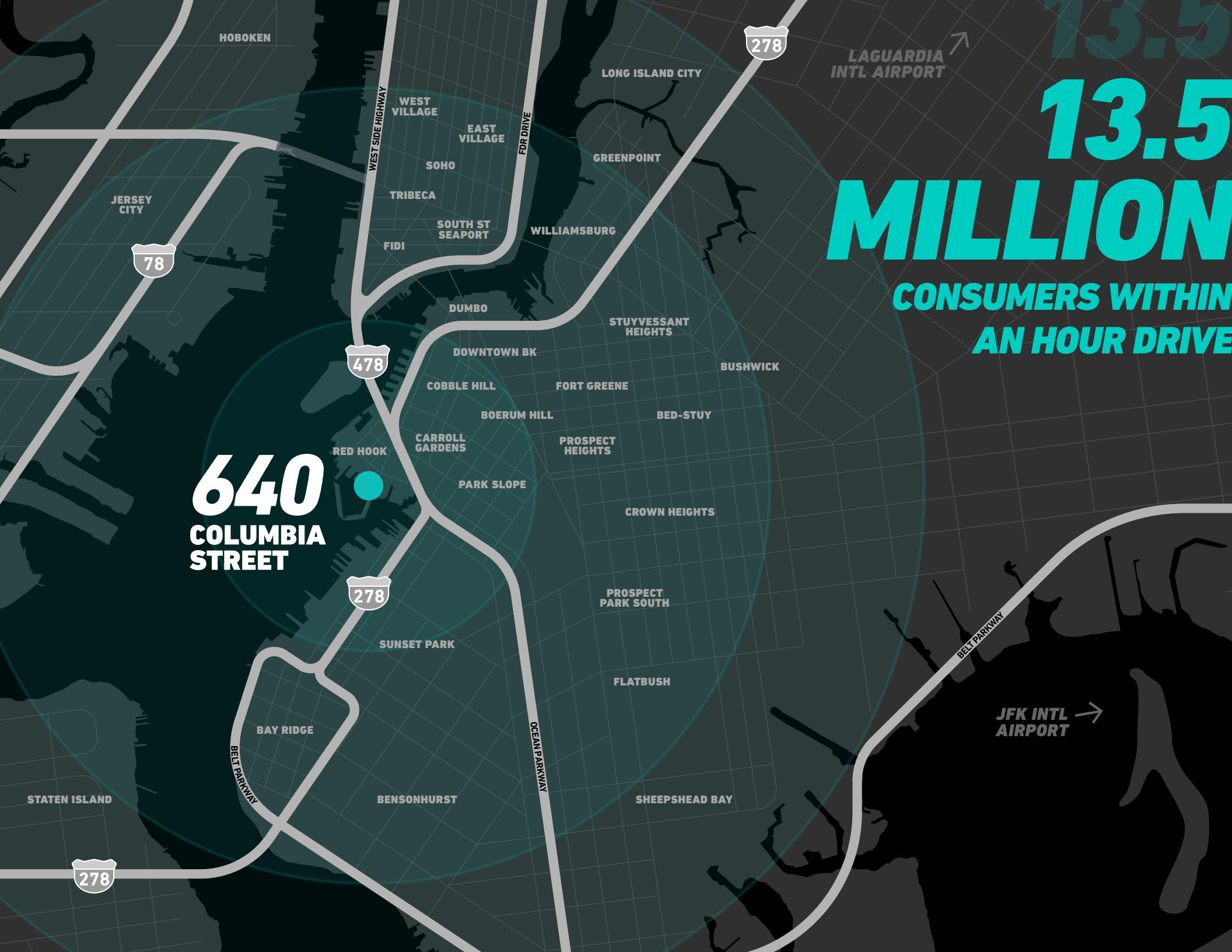
AS QUICK
AS QUICK
AS A CLICK

640 Columbia is a three-story, 336,500SF logistics facility in NYC, minutes from Downtown Manhattan, Brooklyn, Queens, and the largest concentration of ecommerce shoppers in the country. Located in Red Hook, Brooklyn, its location allows for the fastest last-mile fulfillment possible.



640
COLUMBIA
STREET

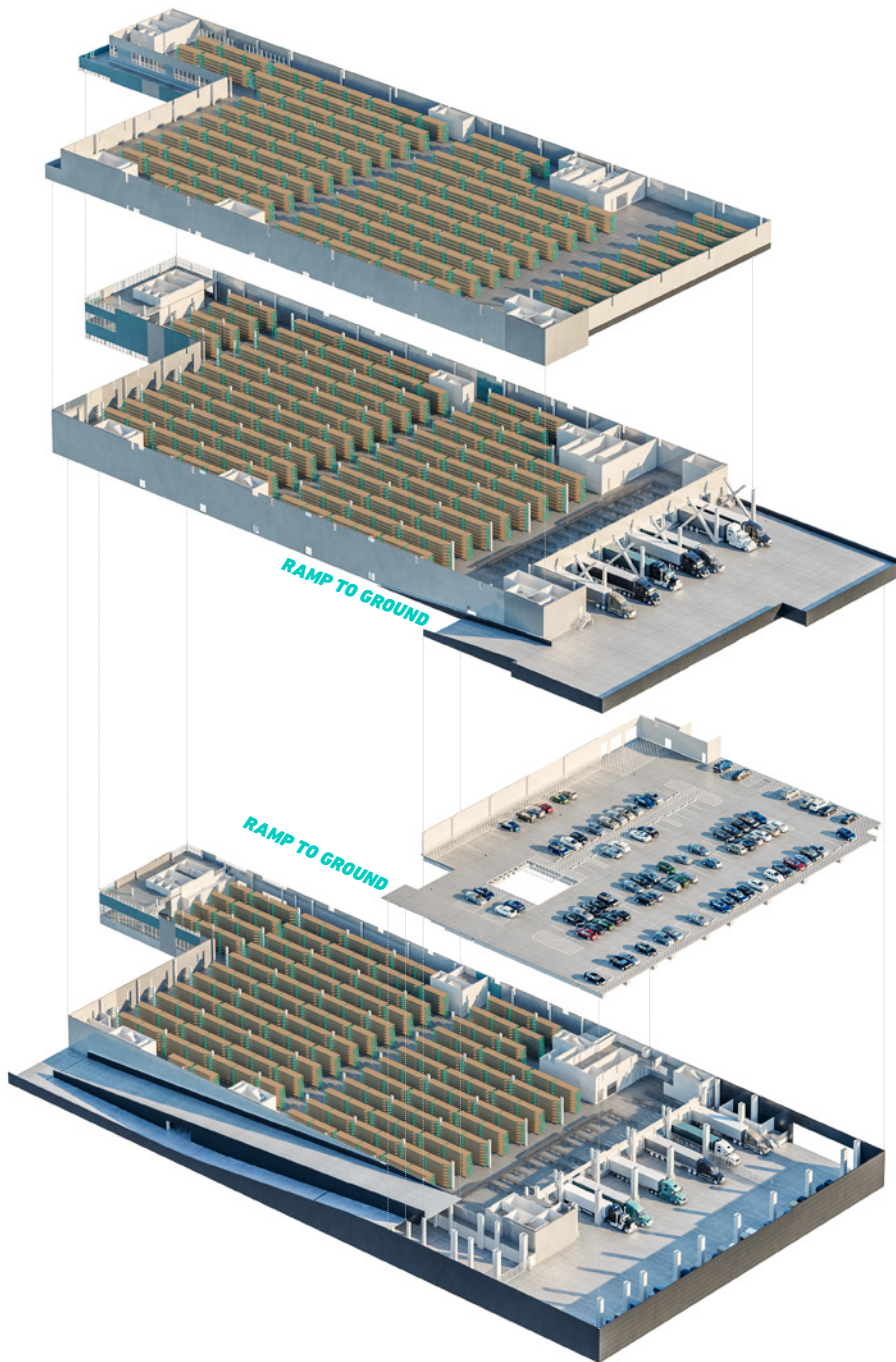
13.5
MILLION
CONSUMERS WITHIN
AN HOUR DRIVE



SAME-DAY SAME-DAY EFFICIENCY

The first multi-story logistics facility on the east coast, 640 Columbia boasts best-in-class architecture and features ramp access to the loading docks on the second floor and a dedicated private elevator servicing the third floor. Scheduled to break ground in Q1 of 2019, 640 Columbia is coming soon.

SEE THE CROSS SECTION ►





28 DOCKS

14 Loading Docks on Both
the First and Second Floors

130'

Truck Court Depth

336,500 SF

Total Square Footage
Available on 1st, 2nd, & 3rd Floors

5 FREIGHTS

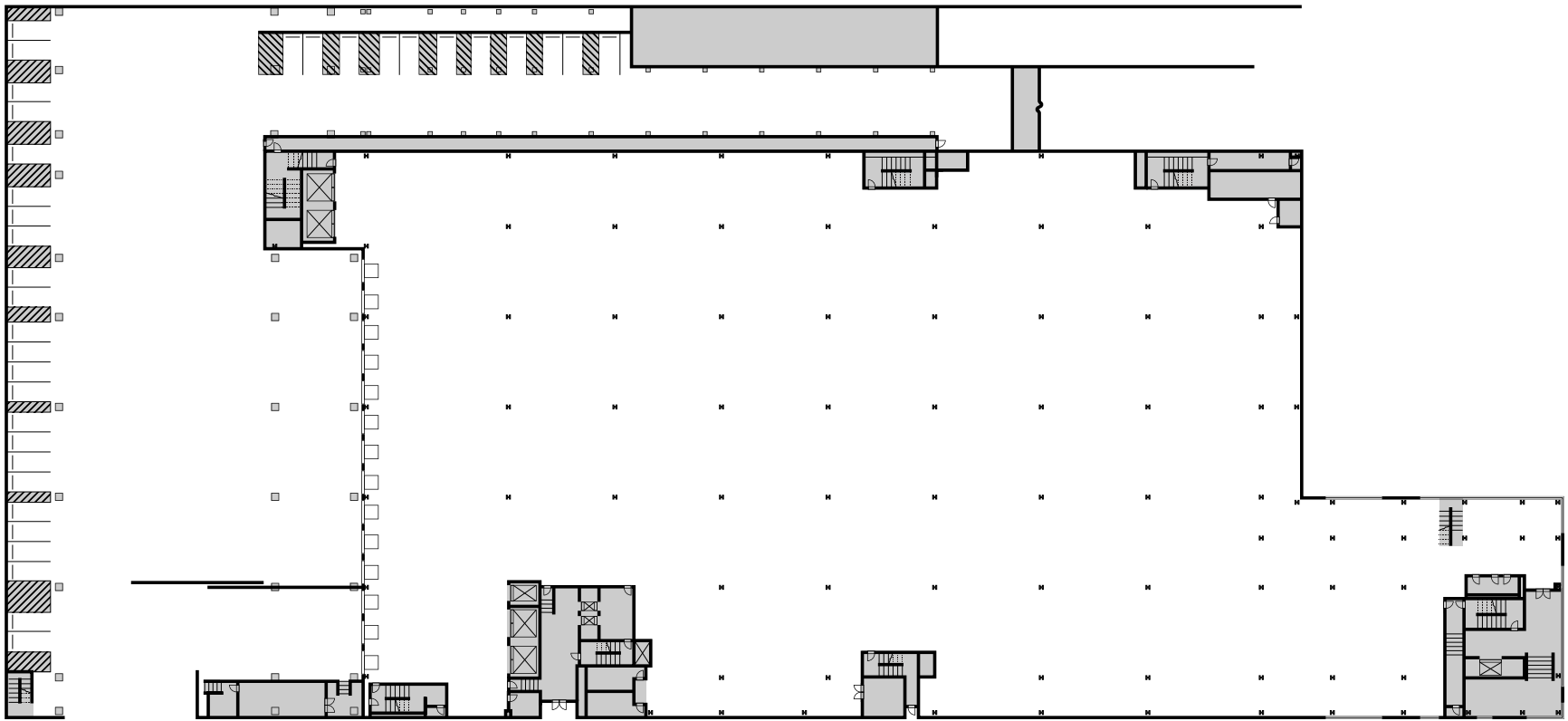
Four Elevators at 14,000lbs Capacity
and One at 7,000lbs Capacity

162

On-site Parking Spaces

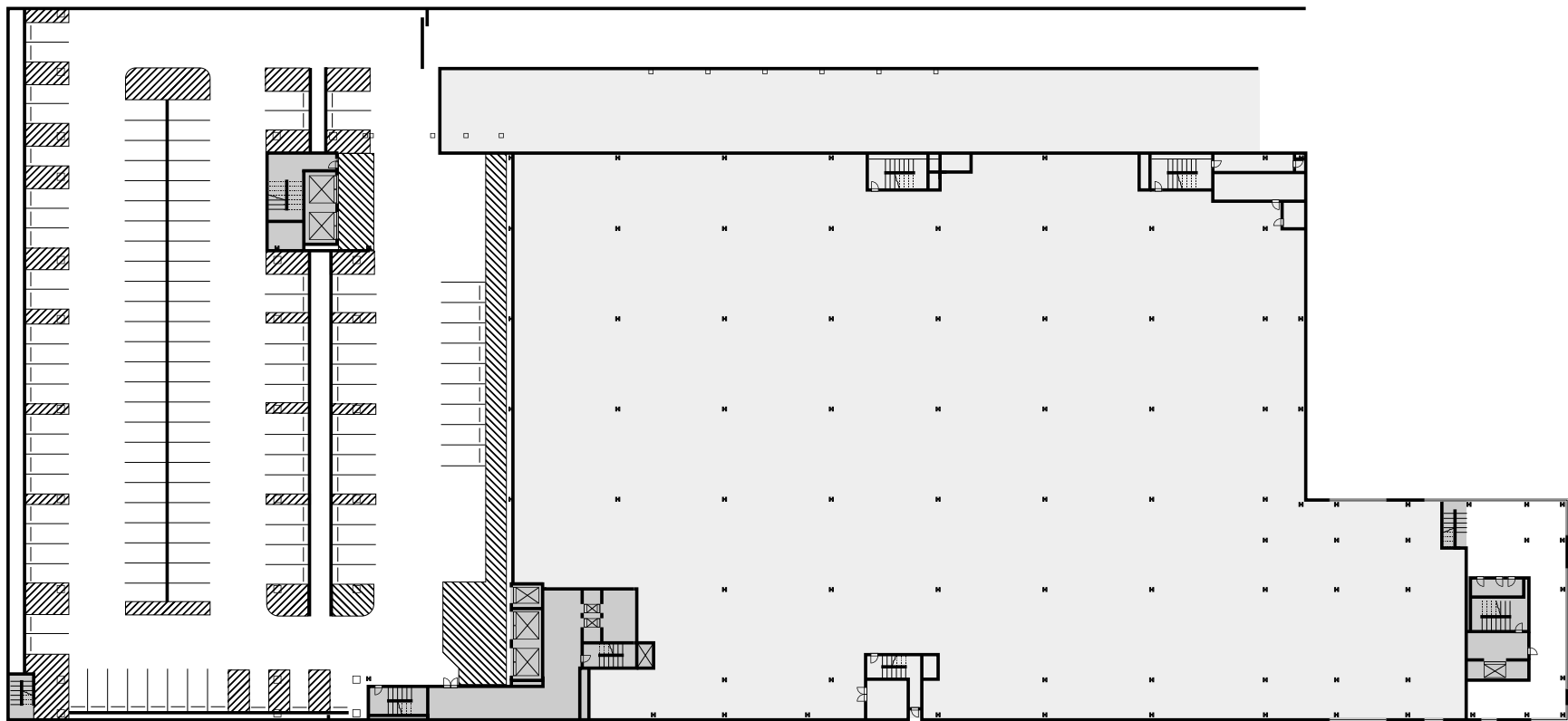
397,000 SF

Total Square Footage
Including Mezzanine Area



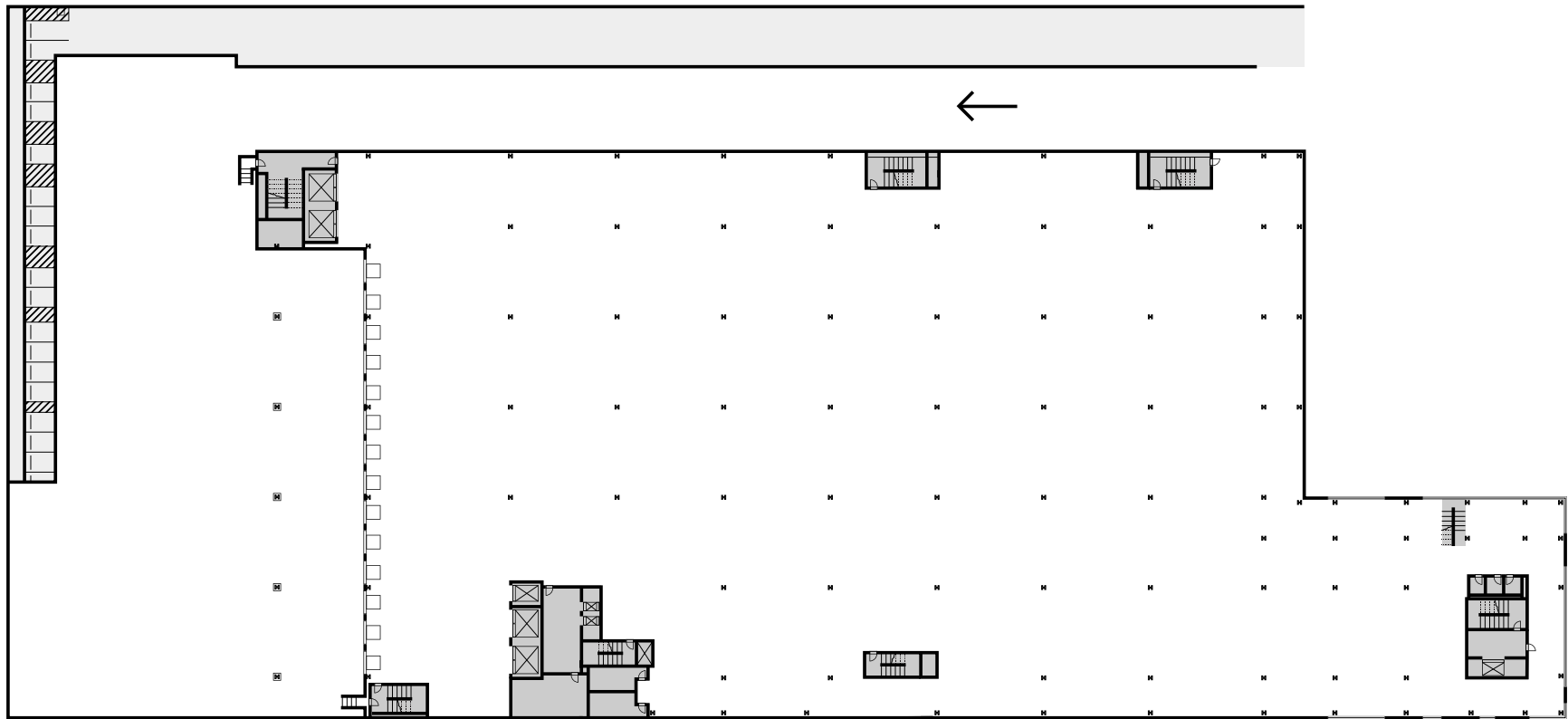
FIRST

- 112,621 SF
- 28' Ceiling Height
- 35 Parking Spaces
- 14 Loading Docks



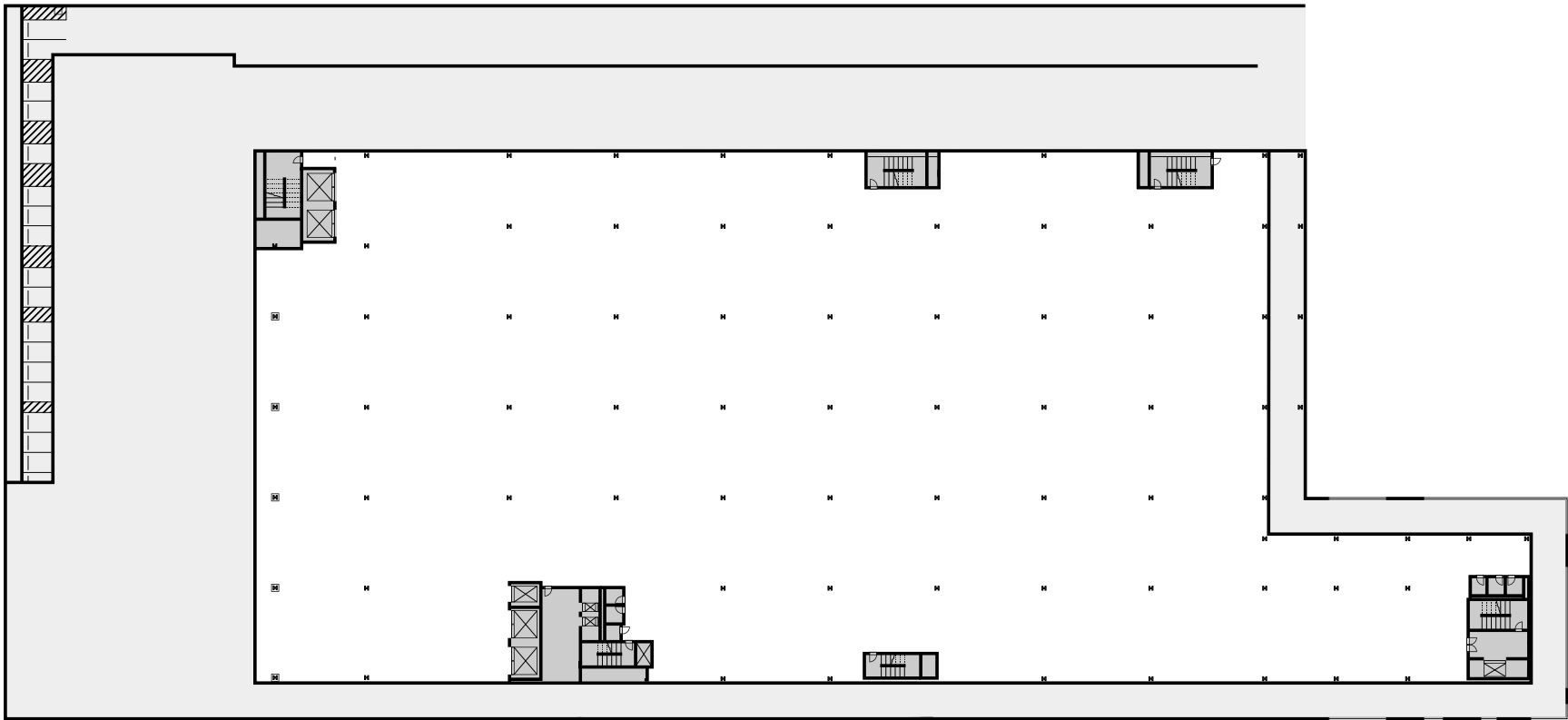
MEZZ

– 60,670 SF
– 127 Parking Spaces



SECOND

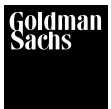
- 115,250 SF
- 28' Ceiling Height
- 14 Loading Docks



THIRD

- 108,479 SF
- 18' Ceiling Height
- Direct Freight Elevator Access

THE FASTEST THE FASTEST LAST MILE



**Asset
Management**

Goldman Sachs Asset Management (GSAM) Private Real Estate focuses on investing across all major property types spanning the risk and return spectrum, sourcing opportunities in primary and secondary markets. The group employs an active management approach, often partnering with operators or property managers to renovate and rebrand assets. The group is part of GSAM, one of the world's leading investment managers.



DH Property Holdings is a Manhattan based real estate investment and asset management firm with an extensive track record acquiring underperforming assets in, and around, New York City. Founded and led by Dov Hertz in November of 2016, DHPH has acquired properties throughout the NY Metropolitan Area. DHPH is focused on value-add opportunities and innovative projects in all asset classes in the boroughs of NYC.



JLL is a financial and professional services firm that specializes in commercial real estate services and investment management. JLL is in business to create and deliver real value through commercial real estate for clients, shareholders and our own people. In a complex world that is constantly changing, JLL is committed to helping clients understand and navigate the intricacies of commercial real estate.

