



FOR LEASE

# Northeast Business Center

7202 E 87<sup>th</sup> Street & 7301 E 90<sup>th</sup> Street  
Indianapolis, IN 46256

HOME

PARK HIGHLIGHTS

LOCATION

BUILDING 3

BUILDING 8

For more information, please contact:

**Bennett Williams**  
Director  
+1 317 639 0442  
[bennett.williams@cushwake.com](mailto:bennett.williams@cushwake.com)

**Megan Cuvelier**  
Director  
+1 317 352 5422  
[megan.cuvelier@cushwake.com](mailto:megan.cuvelier@cushwake.com)

[cushmanwakefield.com](http://cushmanwakefield.com)

©2022 Cushman & Wakefield. All rights reserved. The information contained in this communication is strictly confidential. This information has been obtained from sources believed to be reliable but has not been verified. No warranty or representation, express or implied, is made as to the condition of the property (or properties) referenced herein or as to the accuracy or completeness of the information contained herein, and same is submitted subject to errors, omissions, change of price, rental or other conditions, withdrawal without notice, and to any special listing conditions imposed by the property owner(s). Any projections, opinions or estimates are subject to uncertainty and do not signify current or future property performance.

## Property Highlights

- Single story Office/Warehouse buildings
- Conveniently located near 90<sup>th</sup> Street and I-69
- Quick access to Castleton area amenities
- Zoned I3S

## Building 3

- 36,300 SF
- 9' clear in office space
- 14' clear in warehouse
- Shared common dock and loading space
- 25 designated parking spaces

## Building 8

- 34,122 SF
- 9' clear in office space
- 14' clear in warehouse
- Shared common dock and loading space
- 114 designated parking spaces



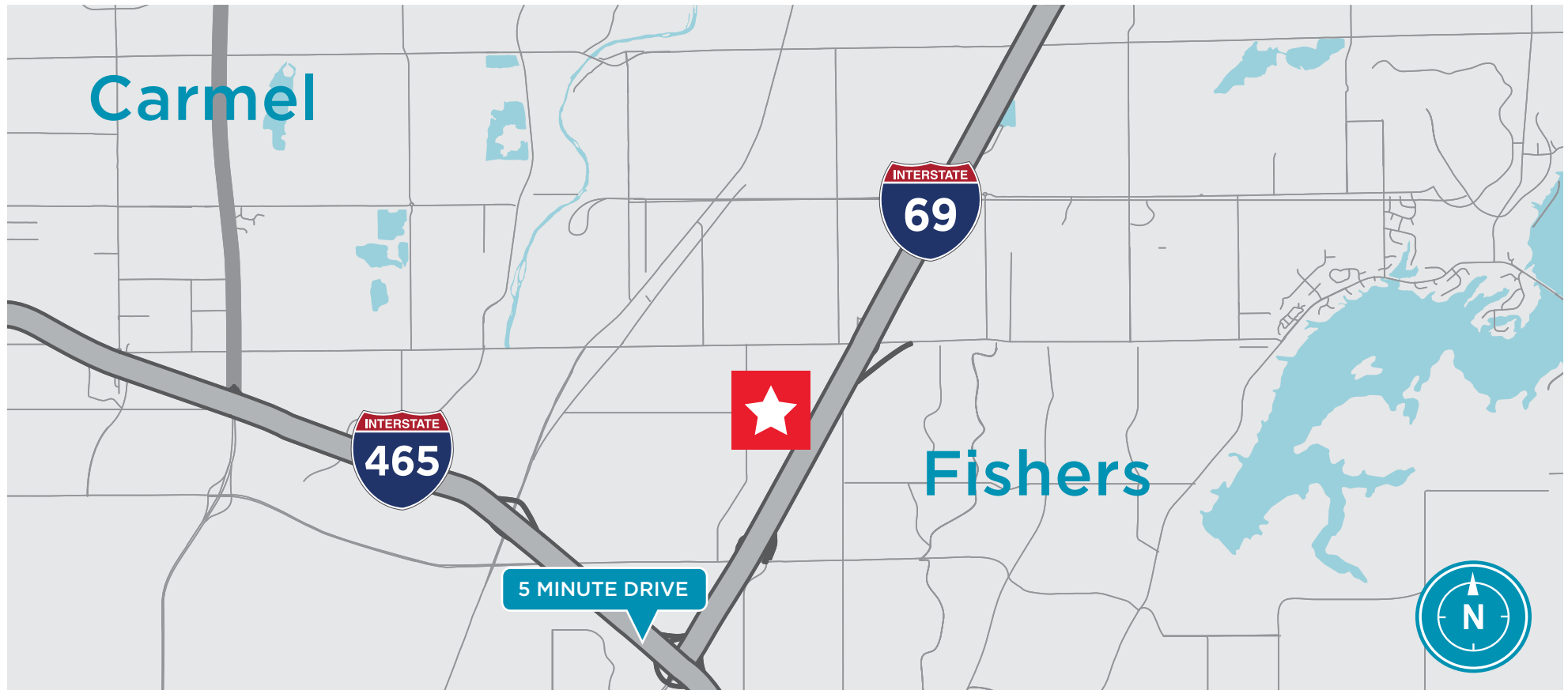
For more information, please contact:

**Bennett Williams**  
Director  
+1 317 639 0442  
bennett.williams@cushwake.com

**Megan Cuvelier**  
Director  
+1 317 352 5422  
megan.cuvelier@cushwake.com

[cushmanwakefield.com](http://cushmanwakefield.com)

## Location



For more information, please contact:

**Bennett Williams**  
Director  
+1 317 639 0442  
bennett.williams@cushwake.com

**Megan Cuvelier**  
Director  
+1 317 352 5422  
megan.cuvelier@cushwake.com

[cushmanwakefield.com](http://cushmanwakefield.com)

HOME

PARK HIGHLIGHTS

LOCATION

**BUILDING 3**

BUILDING 8

## Building 3 Highlights

7202 E 87<sup>th</sup> Street, Indianapolis, IN 46256

- 36,300 SF
- 2,781 SF Available
- 9' clear in office space
- 14' clear in warehouse
- Separately metered utilities
- Shared common dock and loading space
- 25 designated parking spaces



For more information, please contact:

**Bennett Williams**  
Director  
+1 317 639 0442  
bennett.williams@cushwake.com

**Megan Cuvelier**  
Director  
+1 317 352 5422  
megan.cuvelier@cushwake.com

[cushmanwakefield.com](http://cushmanwakefield.com)

HOME

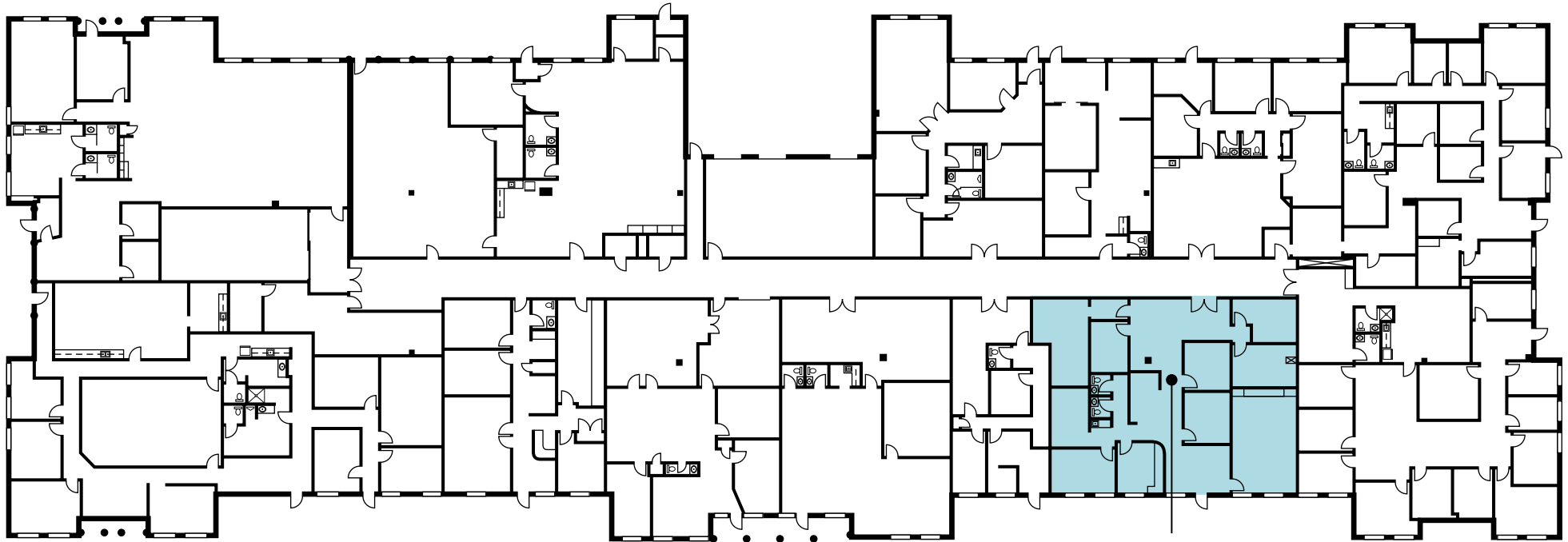
PARK HIGHLIGHTS

LOCATION

**BUILDING 3**

BUILDING 8

## Building 3



**Suite 102**  
Vacant  
2,781 SF

For more information, please contact:

**Bennett Williams**  
Director  
+1 317 639 0442  
bennett.williams@cushwake.com

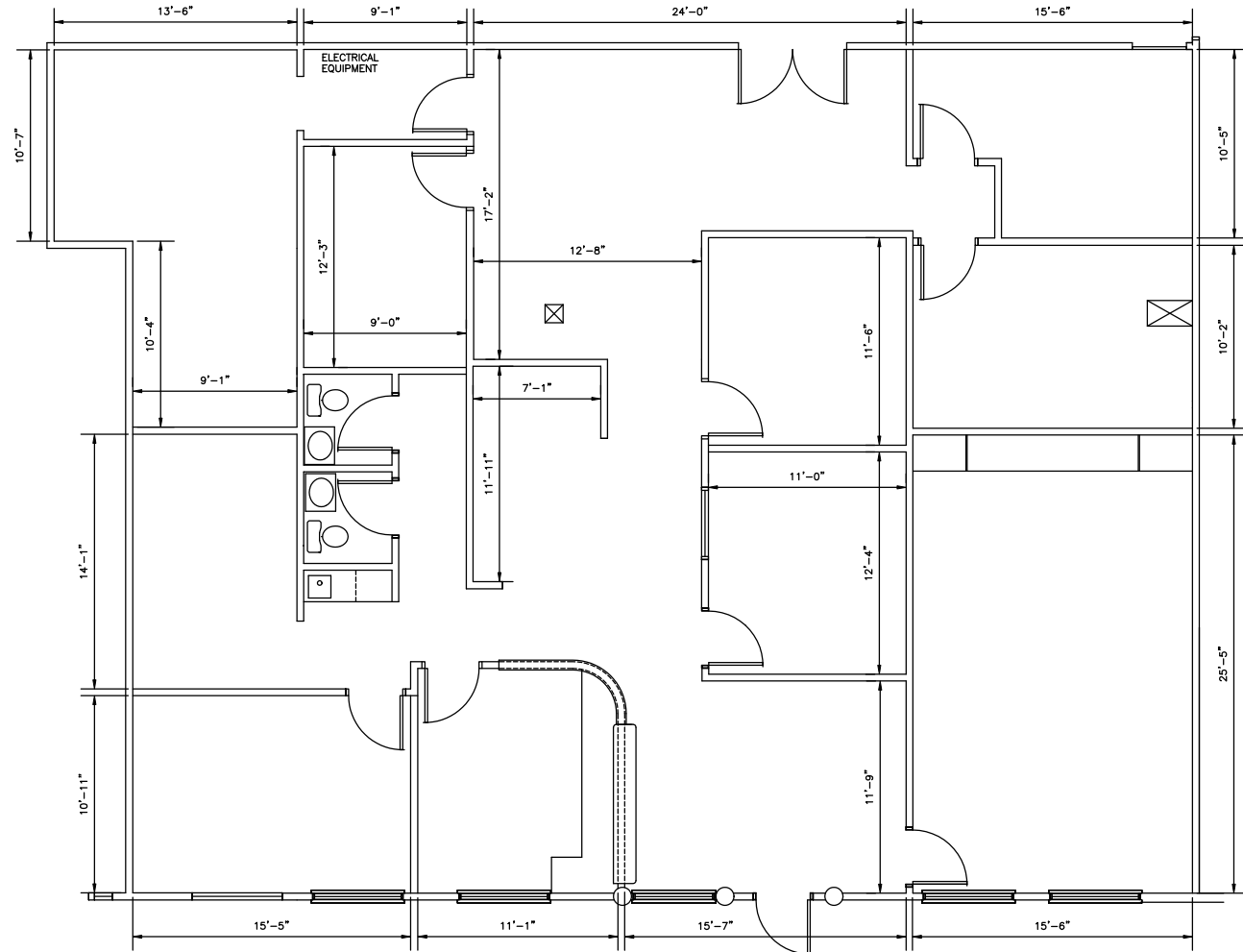
**Megan Cuvelier**  
Director  
+1 317 352 5422  
megan.cuvelier@cushwake.com

[cushmanwakefield.com](http://cushmanwakefield.com)

[HOME](#)[PARK HIGHLIGHTS](#)[LOCATION](#)[BUILDING 3](#)[BUILDING 8](#)

## Building 3 | Suite 102

- 2,781 SF
- Available Now



For more information, please contact:

**Bennett Williams**  
Director  
+1 317 639 0442  
bennett.williams@cushwake.com

**Megan Cuvelier**  
Director  
+1 317 352 5422  
megan.cuvelier@cushwake.com

[cushmanwakefield.com](http://cushmanwakefield.com)

## Building 8 Highlights

7301 E 90<sup>th</sup> Street, Indianapolis, IN 46256

- 34,122 SF
- 8,551 SF Available
- 9' clear in office space
- 14' clear in warehouse
- Separately metered utilities
- Shared common dock and loading space
- Three overhead doors - 2 box truck doors, 1 semi door
- 114 designated parking spaces



For more information, please contact:

**Bennett Williams**  
Director  
+1 317 639 0442  
bennett.williams@cushwake.com

**Megan Cuvelier**  
Director  
+1 317 352 5422  
megan.cuvelier@cushwake.com

[cushmanwakefield.com](http://cushmanwakefield.com)

HOME

PARK HIGHLIGHTS

LOCATION

BUILDING 3

**BUILDING 8**

## Building 8



For more information, please contact:

**Bennett Williams**  
Director  
+1 317 639 0442  
bennett.williams@cushwake.com

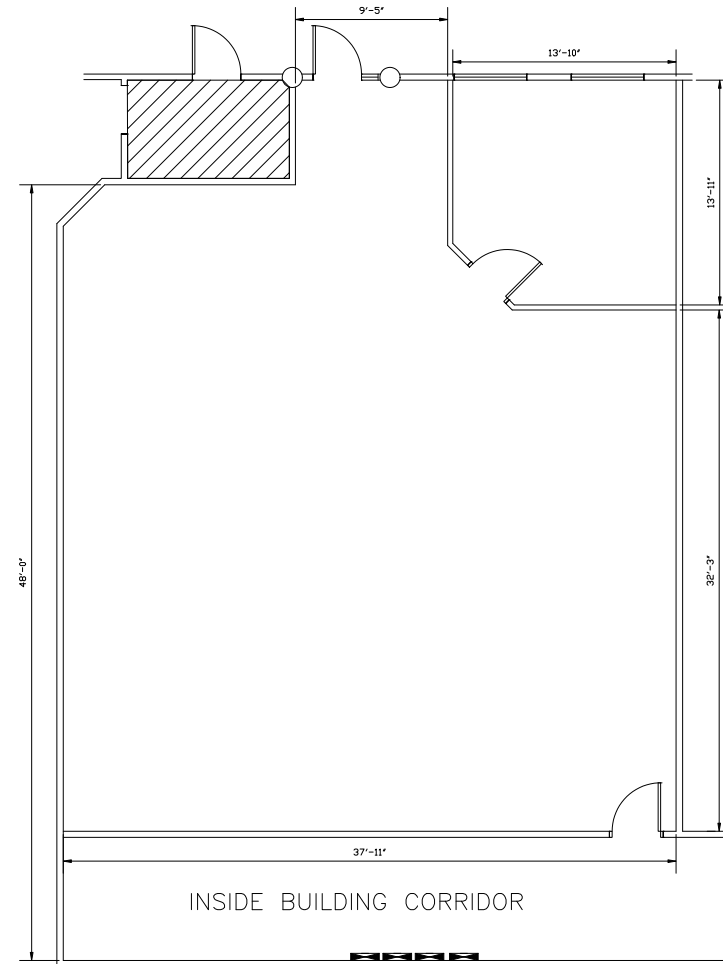
**Megan Cuvelier**  
Director  
+1 317 352 5422  
megan.cuvelier@cushwake.com

[cushmanwakefield.com](http://cushmanwakefield.com)



## Building 8 | Suite 109A

- 1,712 SF



For more information, please contact:

**Bennett Williams**  
Director  
+1 317 639 0442  
bennett.williams@cushwake.com

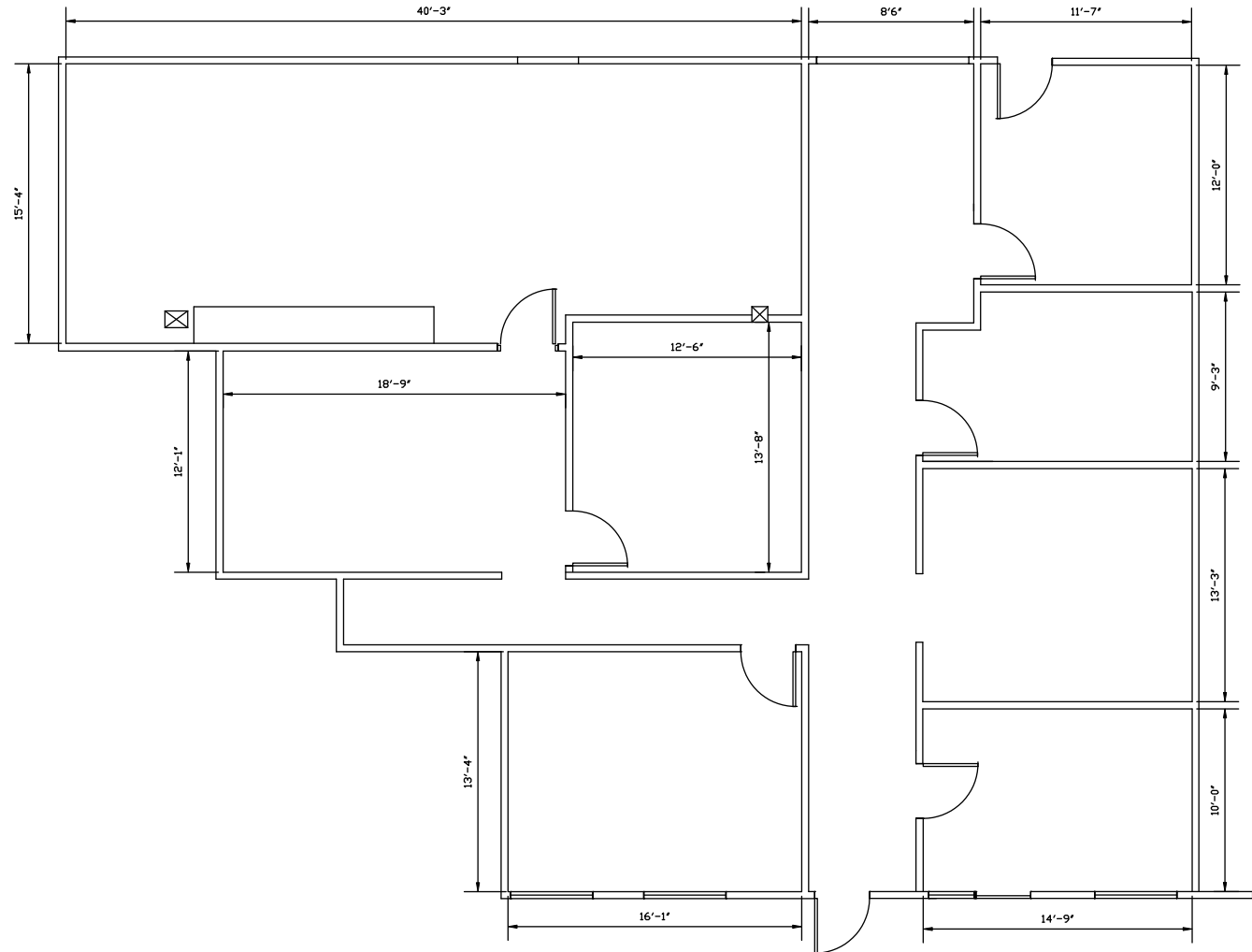
**Megan Cuvelier**  
Director  
+1 317 352 5422  
megan.cuvelier@cushwake.com

[cushmanwakefield.com](http://cushmanwakefield.com)

[HOME](#)[PARK HIGHLIGHTS](#)[LOCATION](#)[BUILDING 3](#)[BUILDING 8](#)

## Building 8 | Suite 109B

- 2,364 SF
- Mix of private offices & open space
- Large break area



For more information, please contact:

**Bennett Williams**  
Director  
+1 317 639 0442  
bennett.williams@cushwake.com

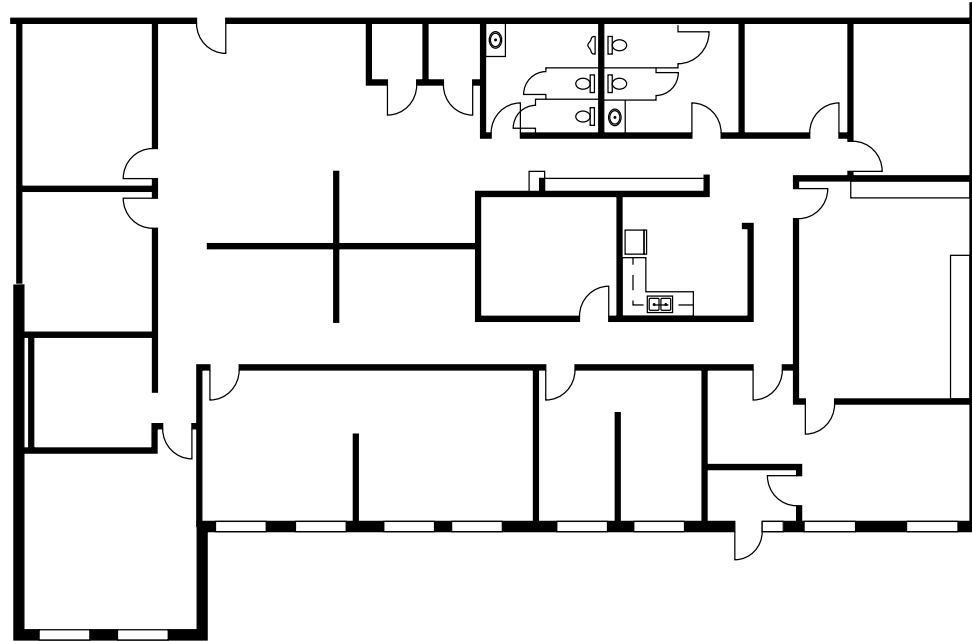
**Megan Cuvelier**  
Director  
+1 317 352 5422  
megan.cuvelier@cushwake.com

[cushmanwakefield.com](http://cushmanwakefield.com)

[HOME](#)[PARK HIGHLIGHTS](#)[LOCATION](#)[BUILDING 3](#)[BUILDING 8](#)

## Building 8 | Suite 112

- 4,475 SF
- Mix of private offices & open space
- Kitchenette



For more information, please contact:

**Bennett Williams**  
Director  
+1 317 639 0442  
[bennett.williams@cushwake.com](mailto:bennett.williams@cushwake.com)

**Megan Cuvelier**  
Director  
+1 317 352 5422  
[megan.cuvelier@cushwake.com](mailto:megan.cuvelier@cushwake.com)

[cushmanwakefield.com](http://cushmanwakefield.com)