

FOR LEASE

OFFICE SPACE ±3,853 Sq. Ft.



BRAND NEW SPEC SUITE



**Prime Scottsdale
Airpark Location!**

Scottsdale Airpark

15170 N Hayden Road | Suite 5 | Scottsdale, Arizona 85260

Presented by

JOHN QUATRINI

Associate Broker
C 602 859 0506
john@shellcommercial.com

SUZANNE ENRIGHT

Senior Associate
C 602 471 2981
suzanne@shellcommercial.com

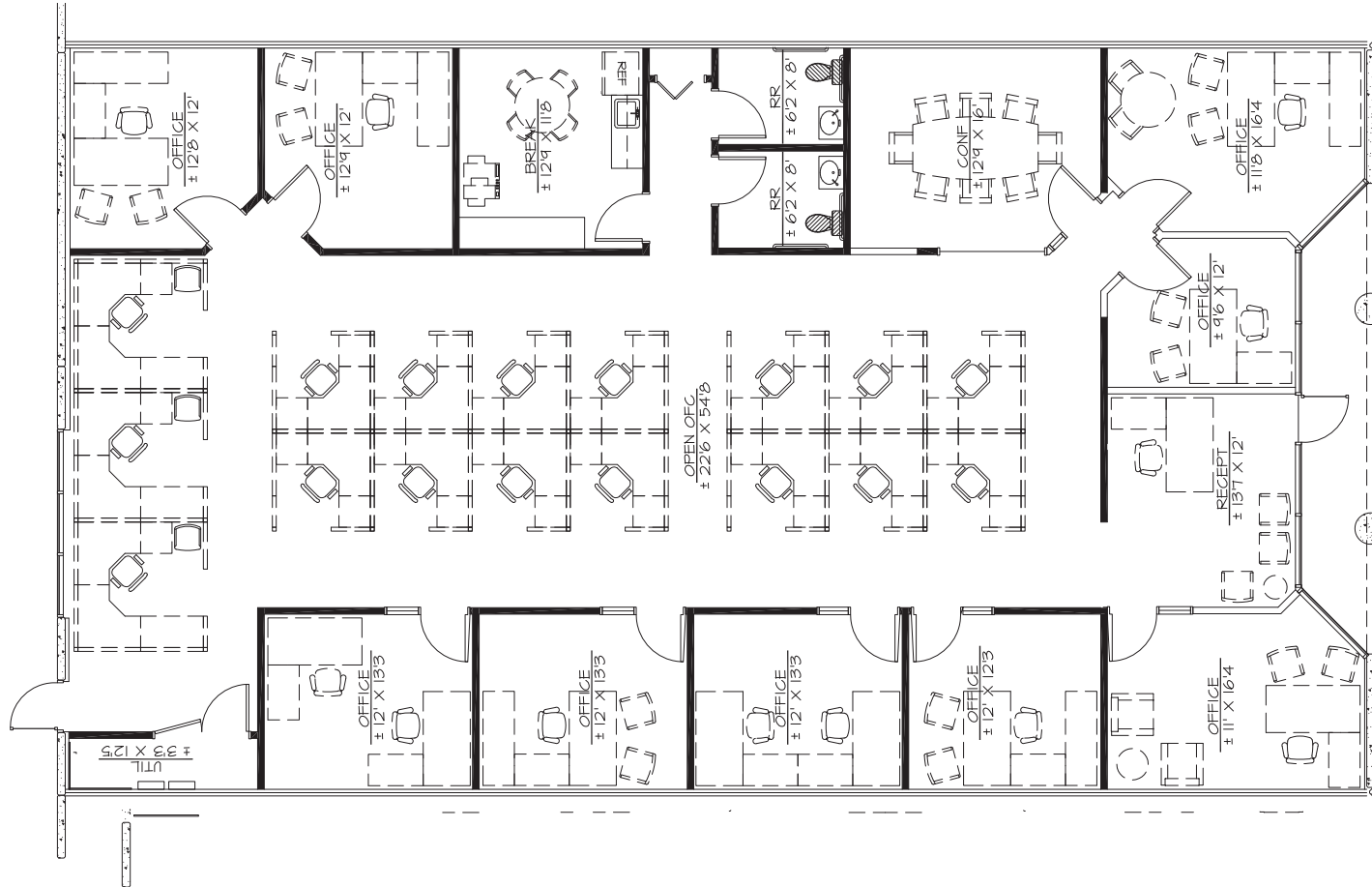
Shell Commercial Investment Real Estate
O 480 443 3992
F 480 443 3680
www.shellcommercial.com
16410 N 91st Street | Suite 112 | Scottsdale, AZ 85260

Scottsdale Airpark Office Space

SUITE 5: ±3,853 SF

15170 N Hayden Road | Suite 5 | Scottsdale, Arizona 85260

BRAND NEW SPEC SUITE



NOT TO SCALE

All information furnished regarding property for sale, rental or financing is from sources deemed reliable, but no warranty or representation is made to the accuracy thereof and same is submitted to errors, omissions, change of price, rental or other conditions, prior to sale, lease or financing or withdrawal without notice. No liability of any kind is to be imposed on the broker herein. This information has been secured from sources deemed reliable, however, we make no warranties as to its accuracy.

JOHN QUATRINI
Associate Broker
C 602 859 0506
john@shellcommercial.com

SUZANNE ENRIGHT
Senior Associate
C 602 471 2981
suzanne@shellcommercial.com



The above is subject to prior sales and leasing. This information has been secured from sources we believe to be reliable, but we make no representation or warranties, expressed or implied as to the accuracy of this information.

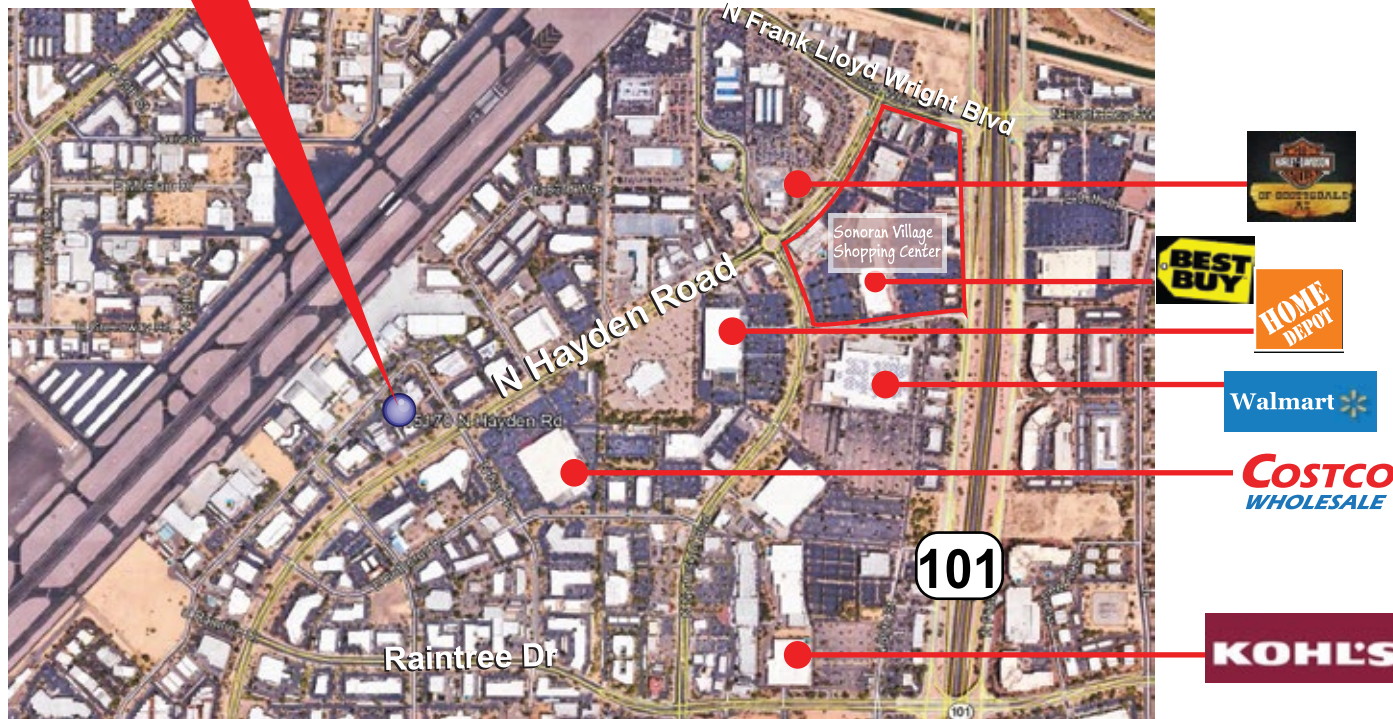
Scottsdale Airpark Office Space

AERIAL

15170 N Hayden Road | Suite 5 | Scottsdale, Arizona 85260



Excellent Hayden Road Location
Across from Costco



JOHN QUATRINI
Associate Broker
C 602 859 0506
john@shellcommercial.com

SUZANNE ENRIGHT
Senior Associate
C 602 471 2981
suzanne@shellcommercial.com

