

Title Center

Office Space for Lease



2211 & 2233 Lee Road,
Winter Park, FL 32789

Property Details:

Total Space Available	3,710 SF
Rental Rate	Negotiable
Min. Divisible	783 SF
Max. Contiguous	1,369 SF
Property Type	Office
Building Size	40,384 SF
Class	B
Zoning Description	O-1

Spaces:

Suite	Space Available	Price	Lease Type	Date Available	Description
2211 - 210	1,369 SF	Negotiable	Full Service	Now	Second floor space with lots of windows and wide open space or can be built to suit
2233 - 203	1,353 SF	Negotiable	Full Service	Now	
2233 - 206	783 SF	Negotiable	Full Service	Now	

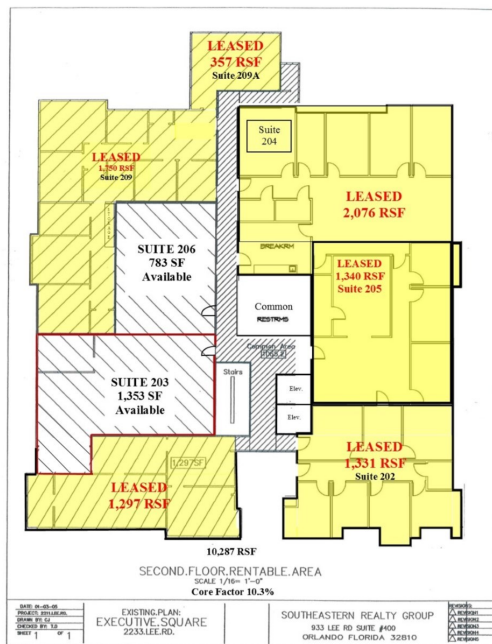
Location Description:

- Winter Park address/ Good Parking
- Two story, Full-Service Office building
- Recently Renovated
- Convenient access to I-4 and US Hwy 17-92
- Minutes from Downtown Winter Park, Downtown Orlando, Maitland, and Altamonte Springs
- Close to new retail/ restaurants in Winter Park



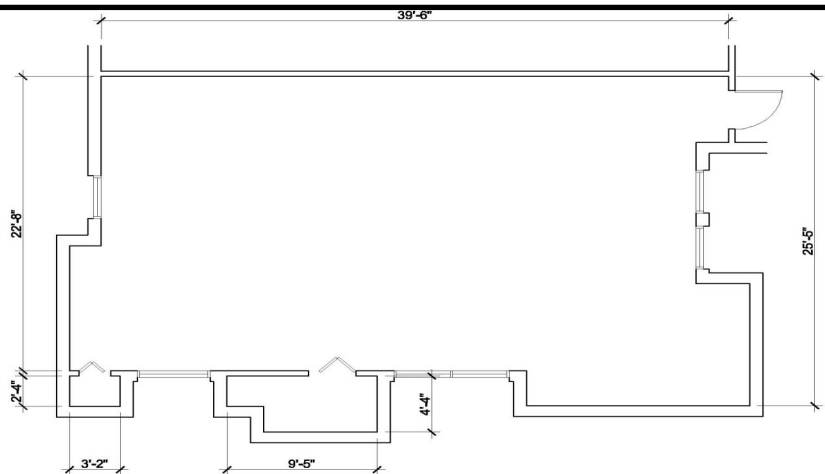
Commercial Sales & Leasing | Property Management | Project Development | Acquisitions & Dispositions | Construction Services

Southeastern Realty Group, Inc. - 933 Lee Road Suite 400 - Orlando, FL 32810 - t: 407-629-5595 - f: 407-645-2035



2233 Lee Road
Suite 203 - 1,353 SF
Suite 206 - 783 SF
Spaces can be combined

2211 Lee Rd
Suite 210 - 1,369 SF



Southeastern Realty Group
933 Lee Road, Suite 400, Orlando, Florida 32810
407-629-5595 phone, 407-645-2035 fax
Visit our website at www.southeasternrealty.com

The information contained herein is from sources deemed reliable, but no warranty or representation is made as to the accuracy thereof and no liability may be imposed.

A hand-drawn floor plan of a building. The overall dimensions are 39'-6" wide and 22'-3" deep. The plan includes the following rooms and features:

- Office 1**: Located in the top left, labeled "OFFICE ①".
- Conference Room**: Located in the top center, labeled "CONFERENCE ROOM".
- Office 2**: Located in the bottom left, labeled "OFFICE 2".
- Office 3**: Located in the bottom right, labeled "OFFICE ③".
- Reception**: Located in the top right, labeled "RECEPTION".
- Waiting Room**: Located in the bottom right, labeled "WAITING ROOM".
- Stairs**: Located in the bottom center, labeled "STAIRS".

Dimensions are provided for various sections:

- Top width: 39'-6"
- Left depth: 22'-3"
- Bottom left width: 3'-2"
- Bottom center width: 9'-5"
- Bottom right depth: 4'-4"
- Right depth: 25'-5"

[illegible]

2233 Lee Rd
Suite 203 - 1,353 SF
Suite 206 - 783 SF