

For Lease

Downtown Office Suite

1409 W. Main St., Boise, ID 83702



AVAILABLE PROPERTY

Location	On Main St. between 14th & 15th
Building Size	8,577 SF
Availability	1,606 - 1,648 SF
Lease Rate	\$17.00 SF (Gross Lease)
Lease Term	3-5 years
TI Allowance	Negotiable

AVAILABLE SPACES

Spaces	Lease Rate	Size (SF)	Available
Suite 100	\$2,197/Mo	1,648	July 20, 2020
Suite 120	\$2,275/Mo	1,606	Immediately

SITE INFORMATION

- Located in the desirable Linen District of Downtown Boise
- Parking available
- Well maintained Single Level Building
- On-Site Manager
- Easy access to downtown and the freeway connector
- Contact agent for showing instructions



5531 N. Glenwood St.,
Boise, ID 83714
208-229-2020

Steve Yates

steve@naiselect.com
C: 208-830-3173
D: 208-229-6020

Dennis Kelley

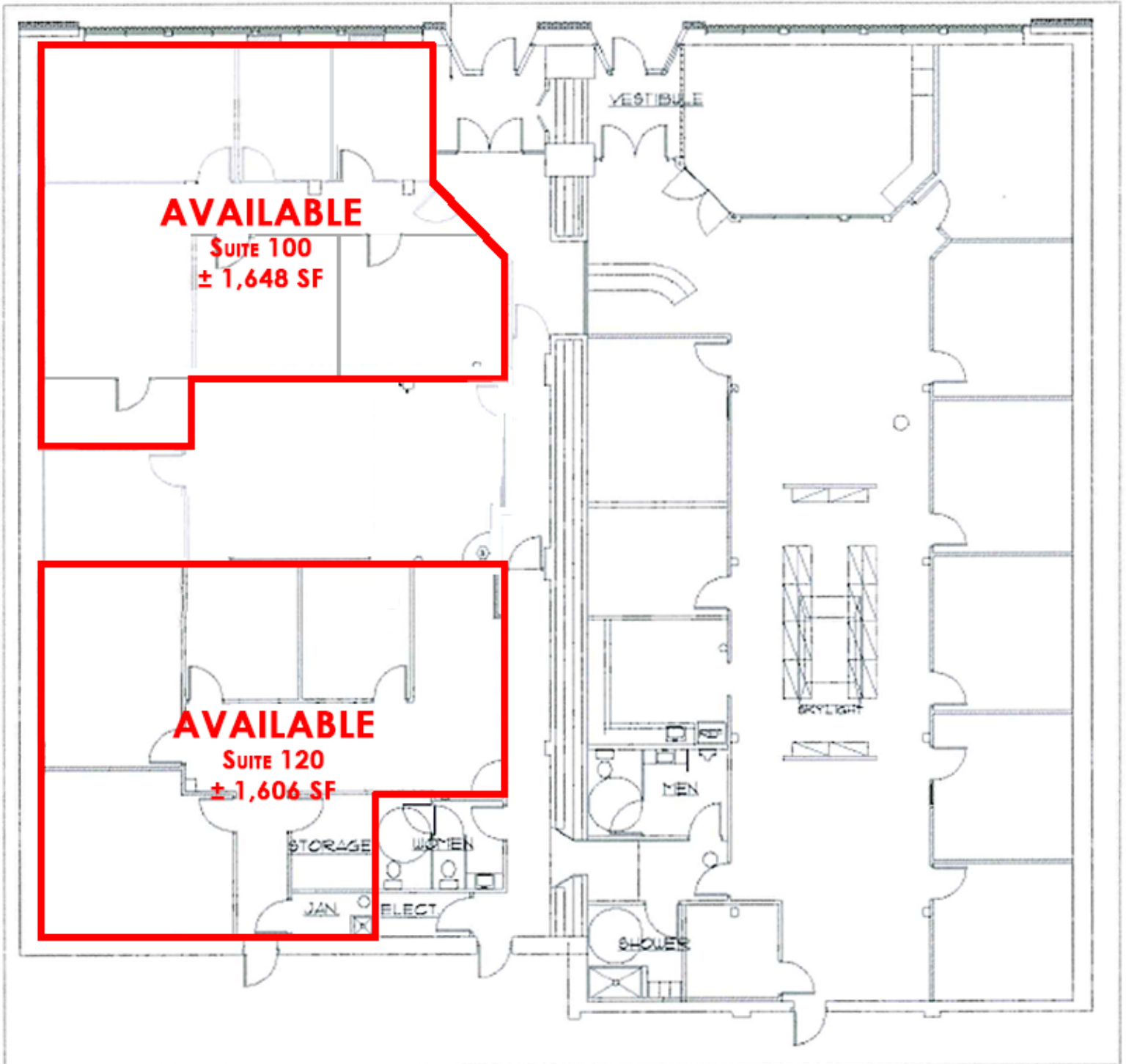
dennis@naiselect.com
C: 208-890-7700
D: 208-229-6021

For Lease

Downtown Office Suite

± 1,606 - 1,648 SF | \$17.00 SF/yr

W. MAIN STREET



NAISelect

5531 N. Glenwood St.,
Boise, ID 83714
208-229-2020

Steve Yates

steve@naiselect.com
C: 208-830-3173
D: 208-229-6020

Dennis Kelley

dennis@naiselect.com
C: 208-890-7700
D: 208-229-6021

For Lease

Downtown Office Suite

1,606 - 1,648 SF | \$17.00 SF/yr



NAISelect

5531 N. Glenwood St.,
Boise, ID 83714
208-229-2020

Steve Yates

steve@naiselect.com
C: 208-830-3173
D: 208-229-6020

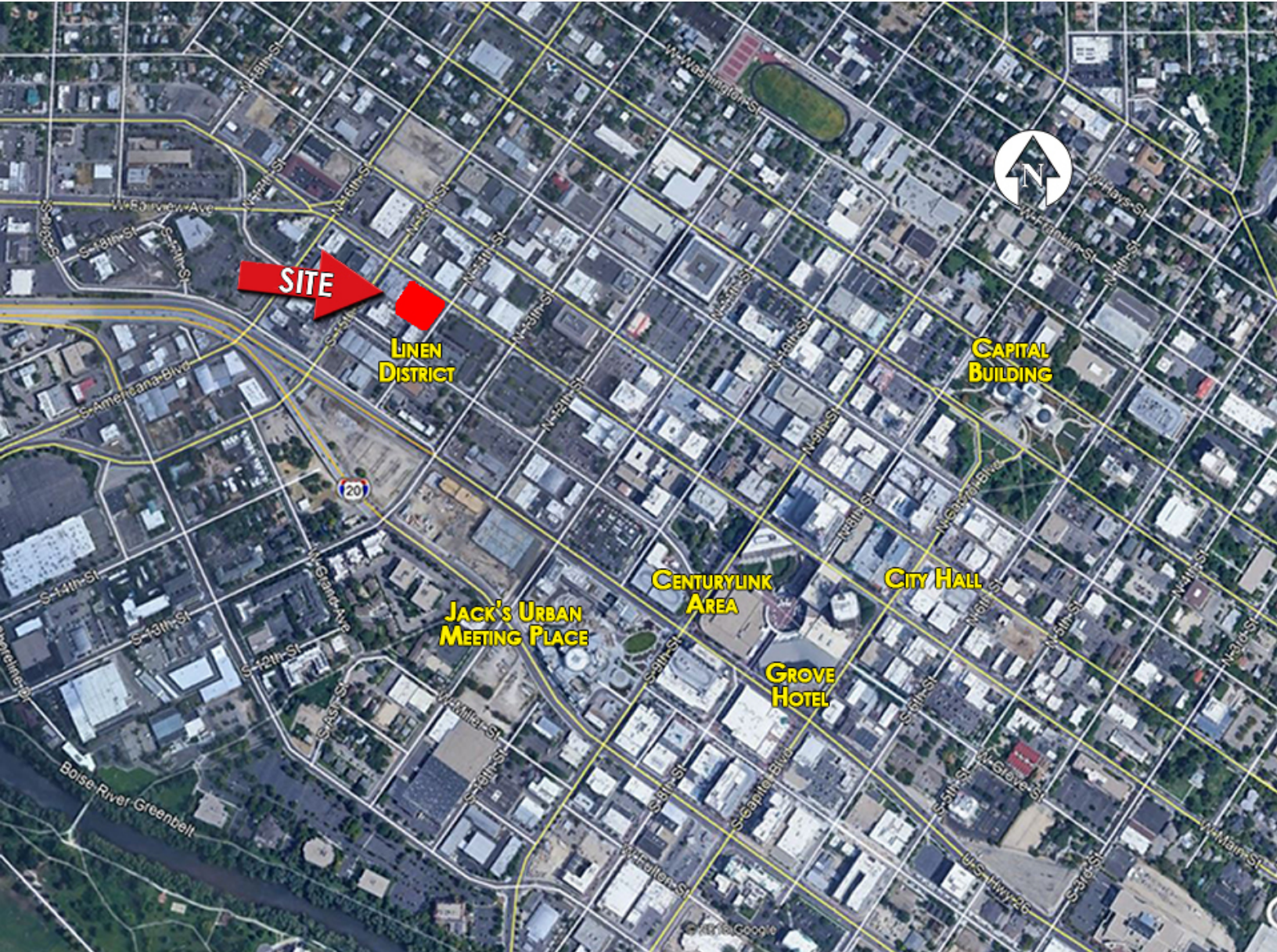
Dennis Kelley

dennis@naiselect.com
C: 208-890-7700
D: 208-229-6021

For Lease

Downtown Office Suite

± 1,606 - 1,648 SF | \$17.00 SF/yr



NAISelect

5531 N. Glenwood St.,
Boise, ID 83714
208-229-2020

Steve Yates

steve@naiselect.com
C: 208-830-3173
D: 208-229-6020

Dennis Kelley

dennis@naiselect.com
C: 208-890-7700
D: 208-229-6021