

# FOR LEASE

1936 E First Street  
Port Angeles, WA 98362



## PORT ANGELES PLAZA

First Western Properties—Tacoma Inc. | 253.472.0404  
6402 Tacoma Mall Blvd, Tacoma, WA 98409 | fwp-inc.com

1936 E FIRST STREET:

2,405 SF \$18.00 PSF, PLUS NNN

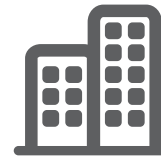
- Great retail opportunity available in Port Angeles main retail core
- Located on Highway 101
- Average of 3,000,000 visitors to Olympic National Park per year
- Great access with six 4-way access points



Population



Average HH Income

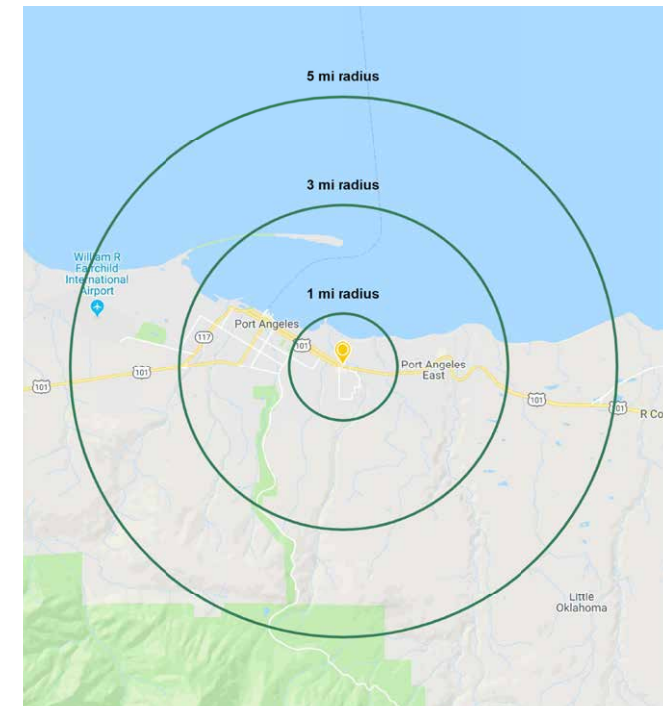


Daytime Population

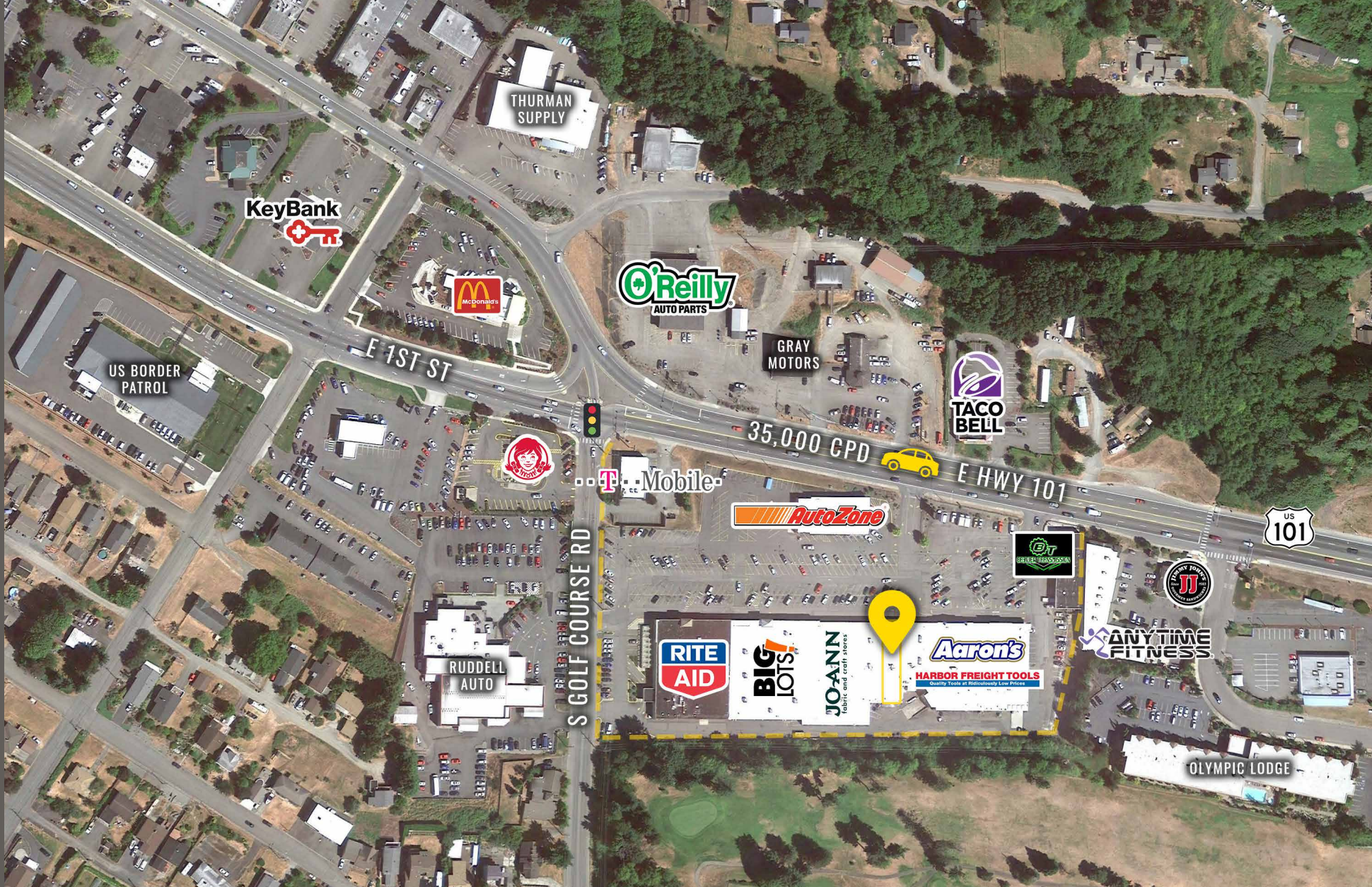
Regis - 2020

	Population	Average HH Income	Daytime Population
Mile 1	3,958	\$66,052	4,949
Mile 3	19,825	\$72,040	19,573
Mile 5	28,110	\$71,958	25,291

TENANTS



LOCATION DETAILS



Located in the heart of Port Angeles



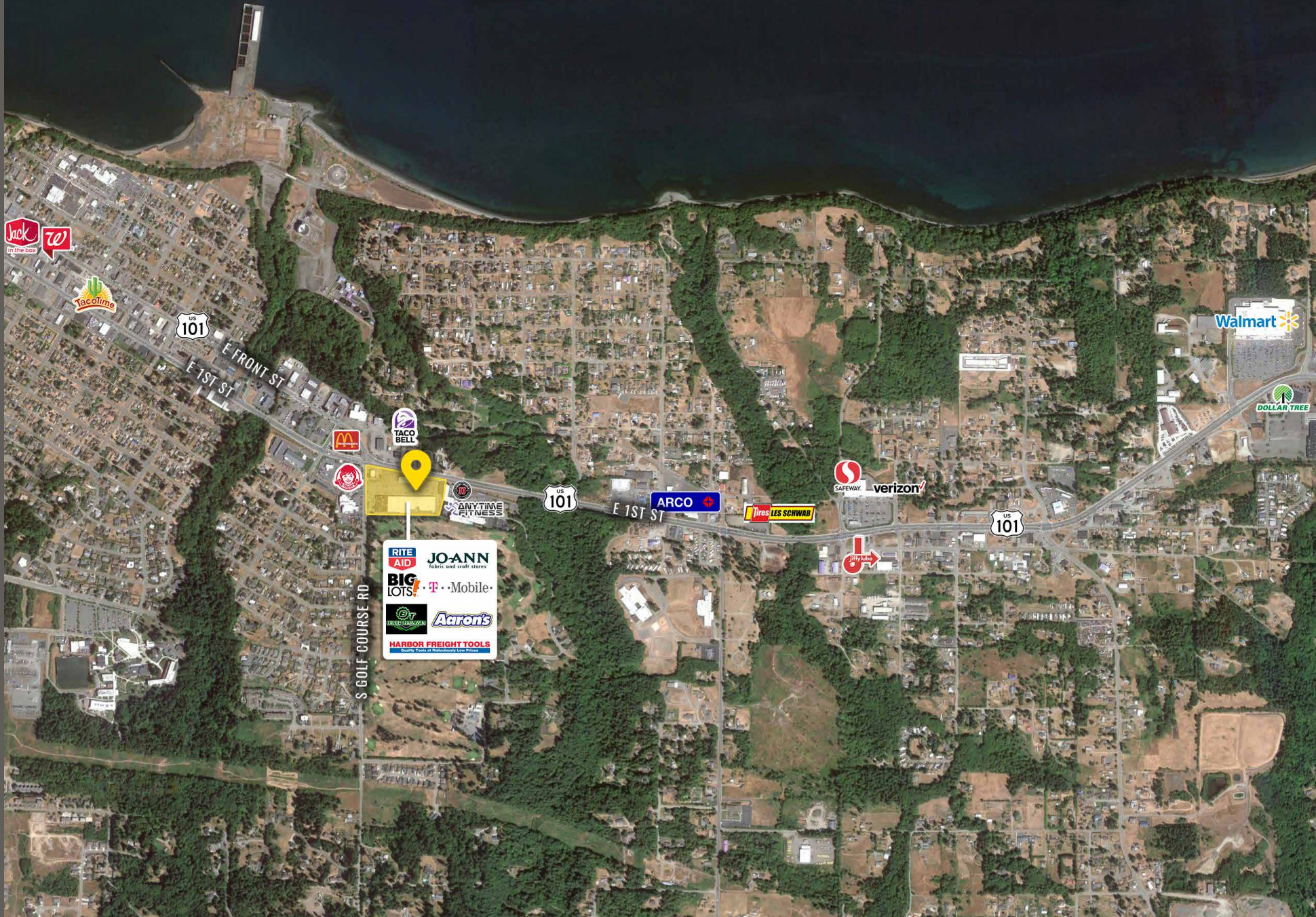
Located 13 miles from Sequim



35,000 CPD Highway 101

LOCATION AERIAL

SEQUIM (13 MILES) →





**PORT ANGELES, WA** is the gateway city of the Olympic National Park. With a temperate climate, rural lifestyle, diverse outdoor recreation, and a vibrant business community, Port Angeles is a popular destination for the nearly 3.5 million people who visit the North Olympic Peninsula each year. The downtown business district, filled with restaurants, hotels, art galleries, gift shops, and a broad variety of retail establishments.

TACOMA | KIRKLAND | PORTLAND | SEATTLE



RELATIONSHIP FOCUSED. RESULTS DRIVEN.

JUSTIN HOLMES

253.447.2282

[justin@firstwesternproperties.com](mailto:justin@firstwesternproperties.com)



First Western Properties—Tacoma Inc. | 253.472.0404  
6402 Tacoma Mall Blvd, Tacoma, WA 98409 | [fwp-inc.com](http://fwp-inc.com)

© First Western Properties, Inc. DISCLAIMER: The above information has been secured from sources believed to be reliable, however, no representations are made to its accuracy. Prospective tenants or buyers should consult their professional advisors and conduct their own independent investigation. Properties are subject to change in price and/or availability without notice.