

OFFICE BUILDING FOR LEASE

4,840 ± SQ. FT.

20 Forsythe Avenue | Yarmouth MA



FOR LEASE AT \$15/SQ. FT. GROSS

For more information, please contact:

JEFF EKLUND

Office: 508-862-9000, Ext. 115 | Cell: 508-280-2349

Fax: 508-862-9200 | jeklund@comrealty.net

Commercial
Realty Advisors



222 West Main Street, Hyannis, MA 02601 | 508-862-9000 | www.comrealty.net

Commercial Realty Advisors

PROPERTY SUMMARY: 20 FORSYTHE AVENUE, YARMOUTH MA

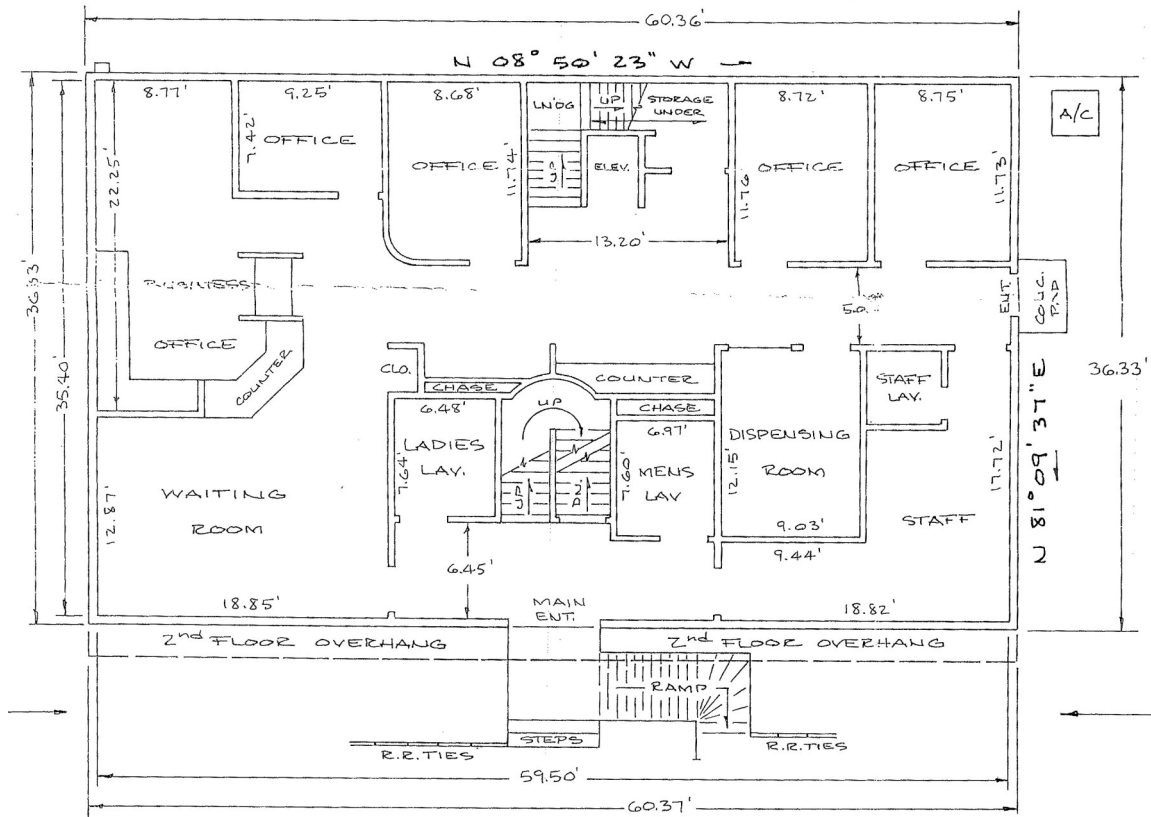
The Property

20 Forsythe Avenue is a 4,840 sq. ft. newly renovated office building for lease. The units are dividable, with a minimum of 1,000 sq. ft. per unit. Building has municipal water and forced hot air heat (HVAC). Ample parking on-site. Property is located 1/3 mile from Exit 8 off the Mid-Cape Highway.



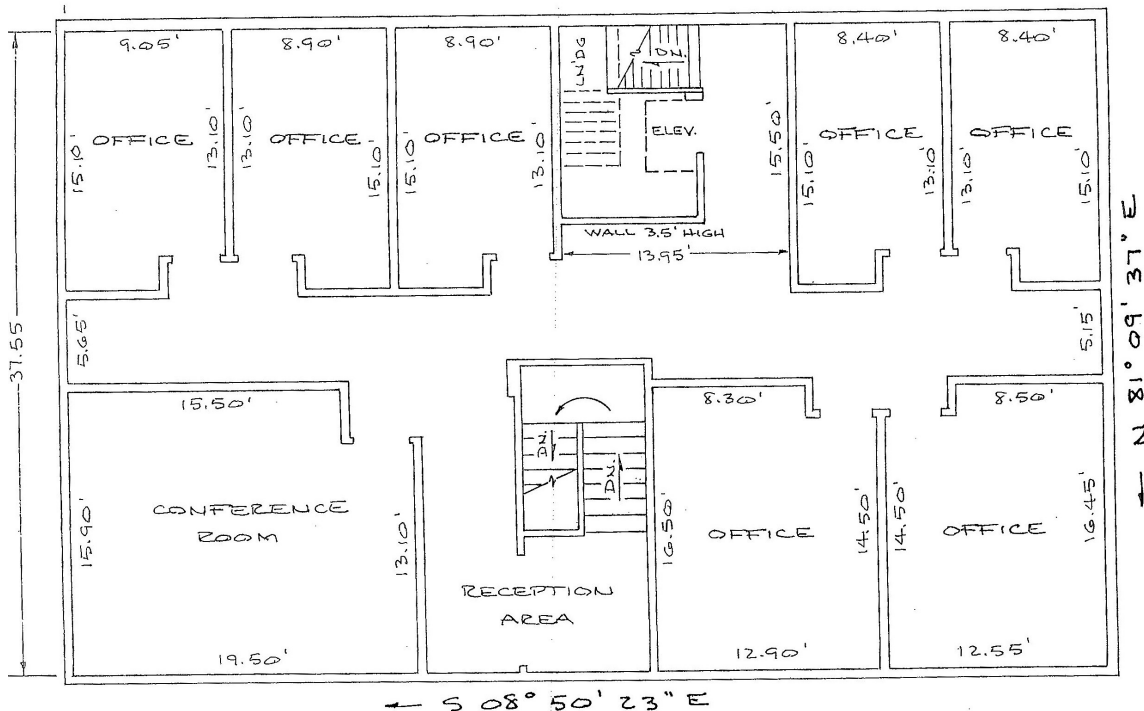
Commercial Realty Advisors

SITE/FLOOR PLANS: 20 FORSYTHE AVENUE, YARMOUTH



FIRST FLOOR

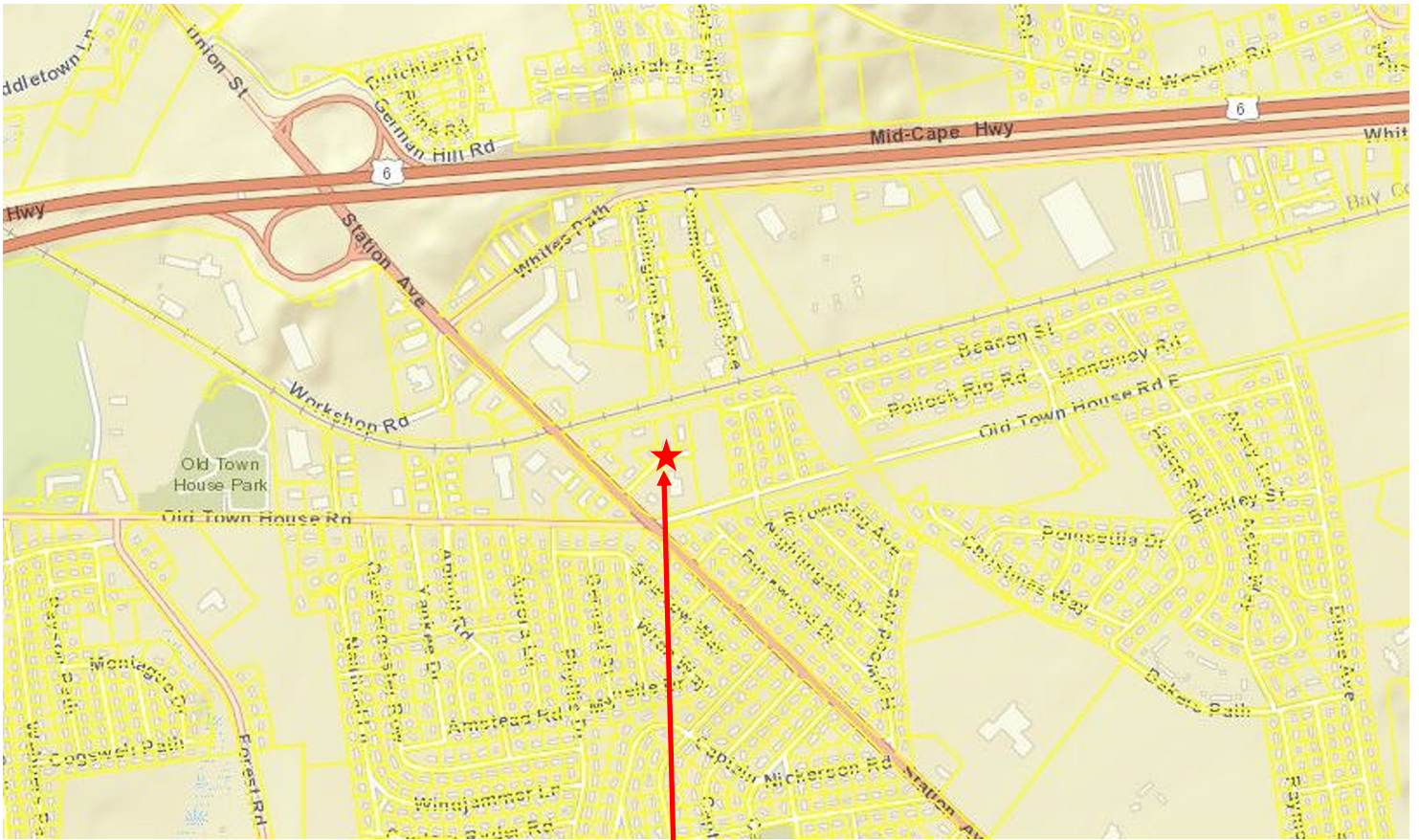
2,106 ± sq. ft.



SECOND FLOOR

2,239 ± sq. ft.

MAP VIEW: 20 FORSYTHE AVENUE, YARMOUTH MA



20 Forsythe Avenue

COMMERCIAL REALTY ADVISORS' DISCLAIMER

This information has been secured from sources we believe to be reliable, but we make no representation or warranties, expressed or implied, as to the accuracy of the information contained herein. Commercial Realty Advisors, Inc. and the agent presenting this opportunity represent the Seller / Lessor, and are neither architects, engineers, inspectors, accountants nor attorneys, and therefore all buyers / tenants must consult with their own architects, engineers, inspectors, accountants or attorneys as to financial, zoning, lot line, handicapped accessibility, flood plain, mechanical, structural, or environmental concerns. Buyer must verify all information and bears all the risk for inaccuracies. Referenced square footage and acreage and sketched outlines are approximate, and this information package is subject to change.