

## Seagate Corporate Center

3516 Seagate Way  
Suite 120  
Oceanside, CA

2,759 SF high image flex suite

1,476 SF office

24' warehouse clear height

Convenient access from  
Oceanside Blvd, Corporate  
Center Dr, Rancho Del Oro  
Rd; centrally located near I-5,  
Highways 78 & 76

200 amps; 120/208 volts

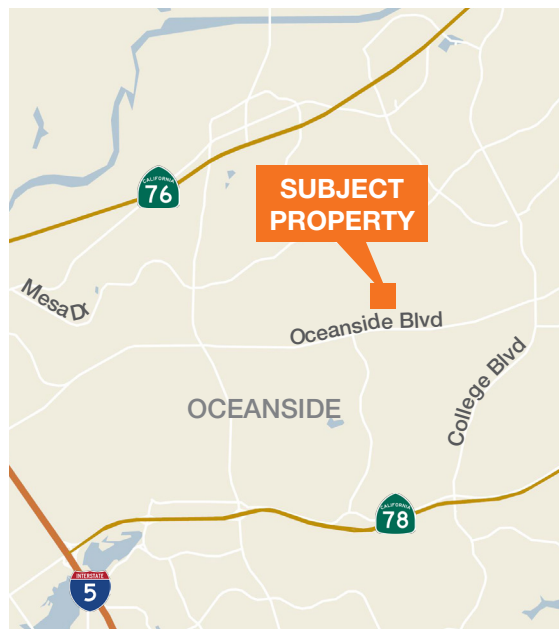
Excellent parking (3.0 spaces  
per 1,000 SF)

One grade level door (12' x 12')

Lease rate: \$1.05 + \$0.17  
(association dues)



### Location

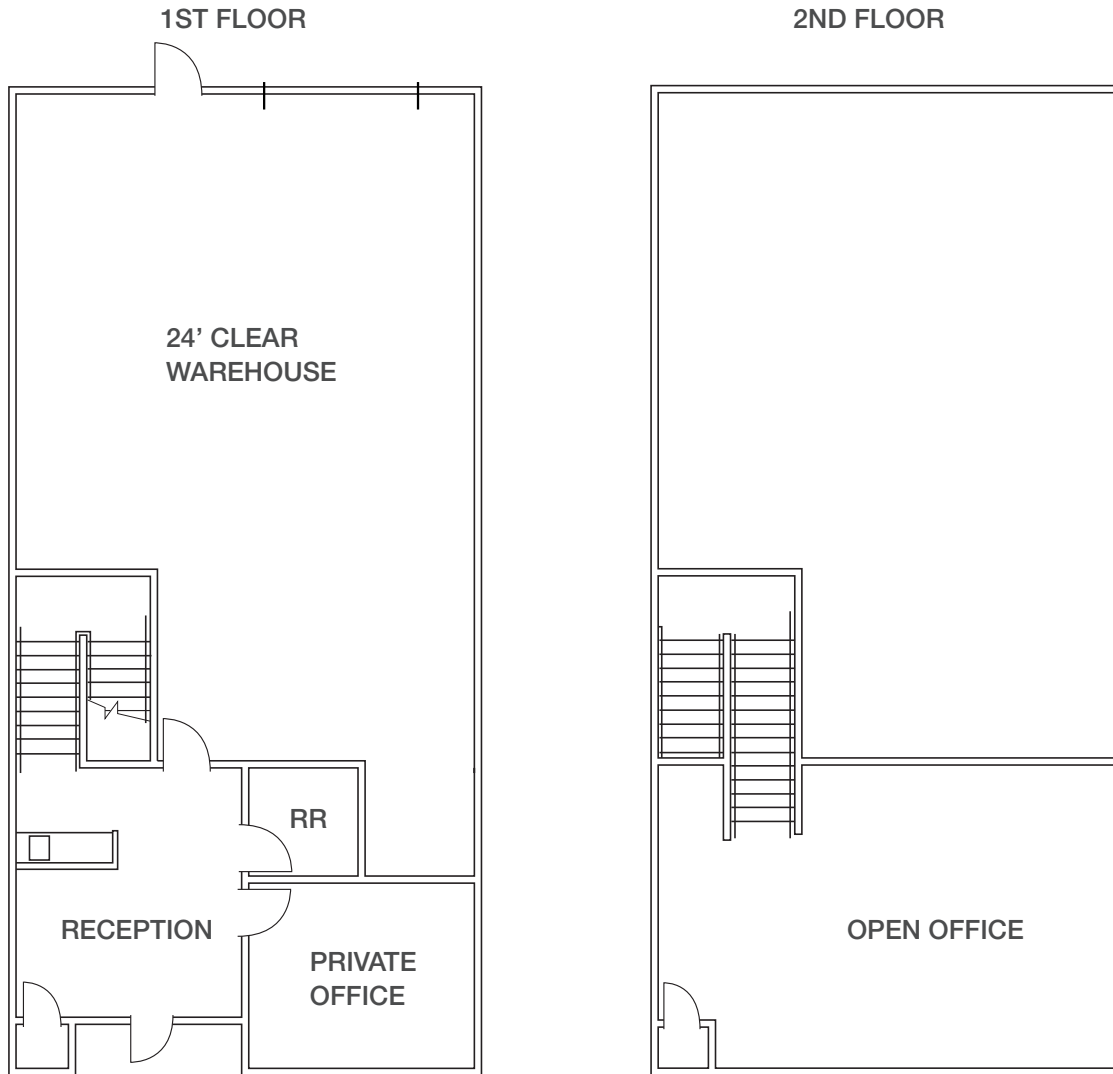


### Contact

**Ronald L. King, SIOR**  
858.369.3011  
rking@kiddermathews.com  
LIC #00868661

**Bob Willingham, SIOR**  
858.369.3013  
bobw@kiddermathews.com  
LIC #01469841

## Suite 120



### Contact

**Ronald L. King, SIOR**  
858.369.3011  
rking@kiddermathews.com  
LIC #00868661

**Bob Willingham, SIOR**  
858.369.3013  
bobw@kiddermathews.com  
LIC #01469841