

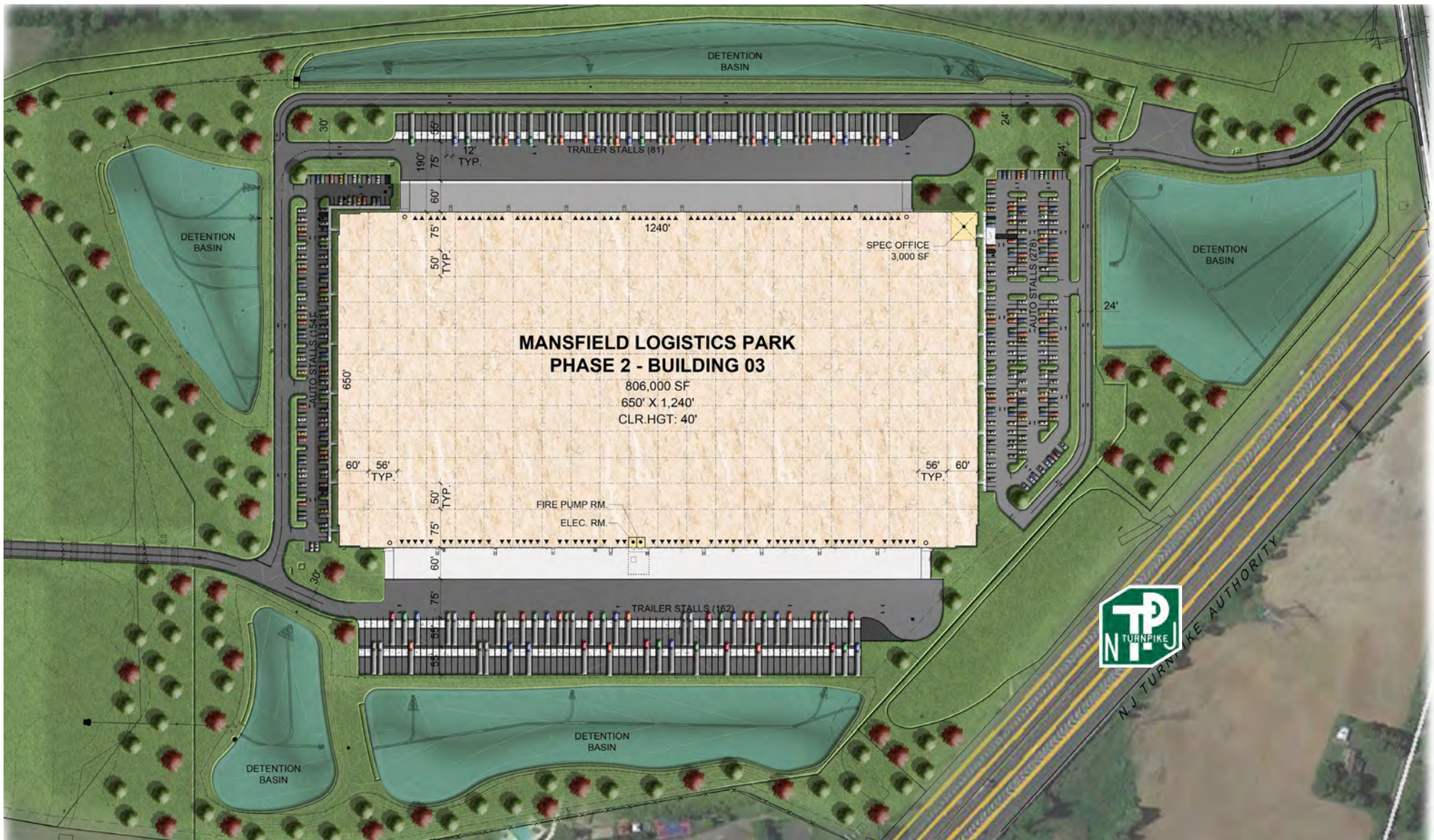


FOR LEASE
±806,000 SF

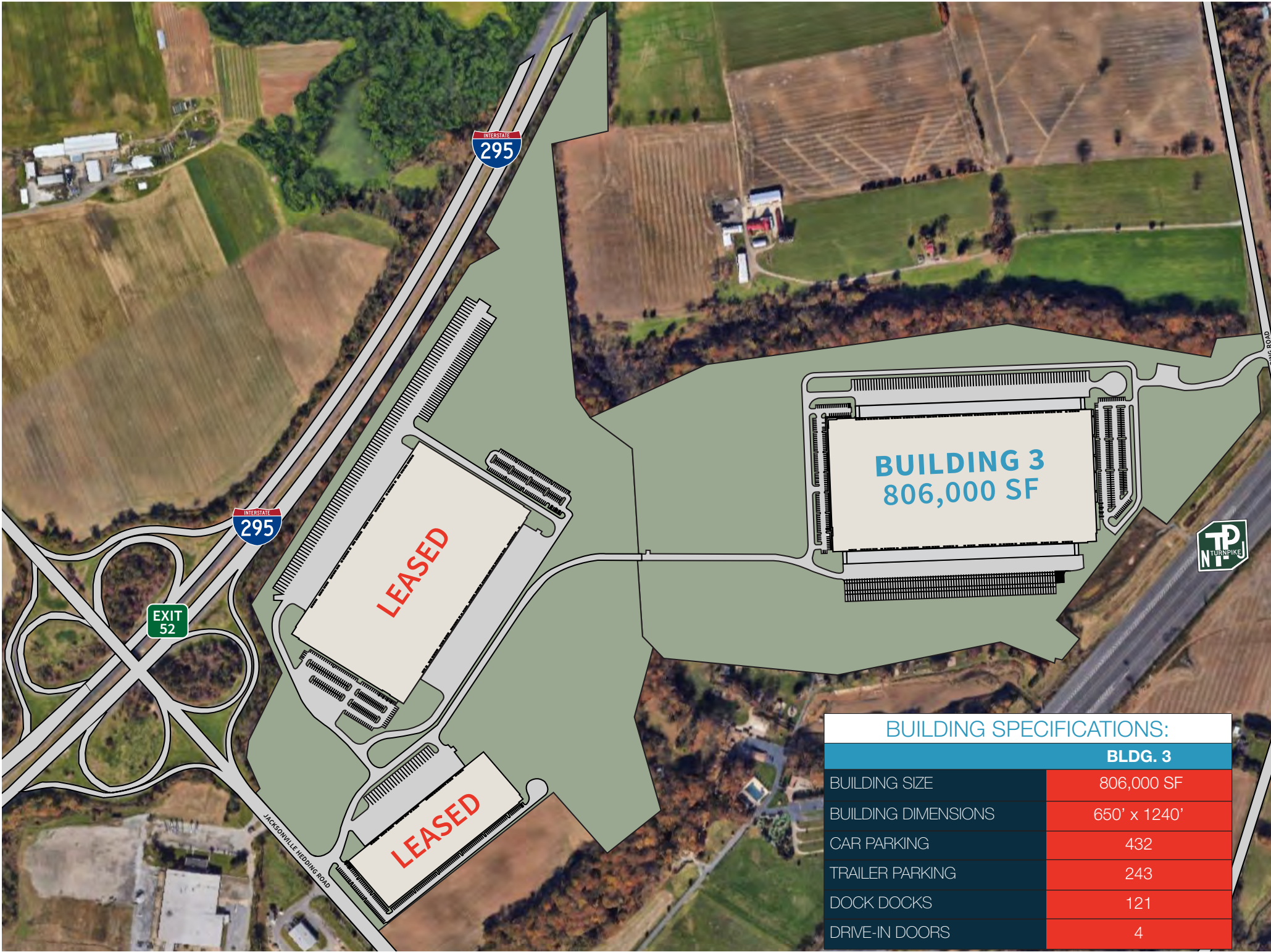
BUILDING 3
PART OF MASTER PLANNED INDUSTRIAL PARK

CP CLARION PARTNERS MRP | INDUSTRIAL

MANFIELD
LOGISTICS PARK

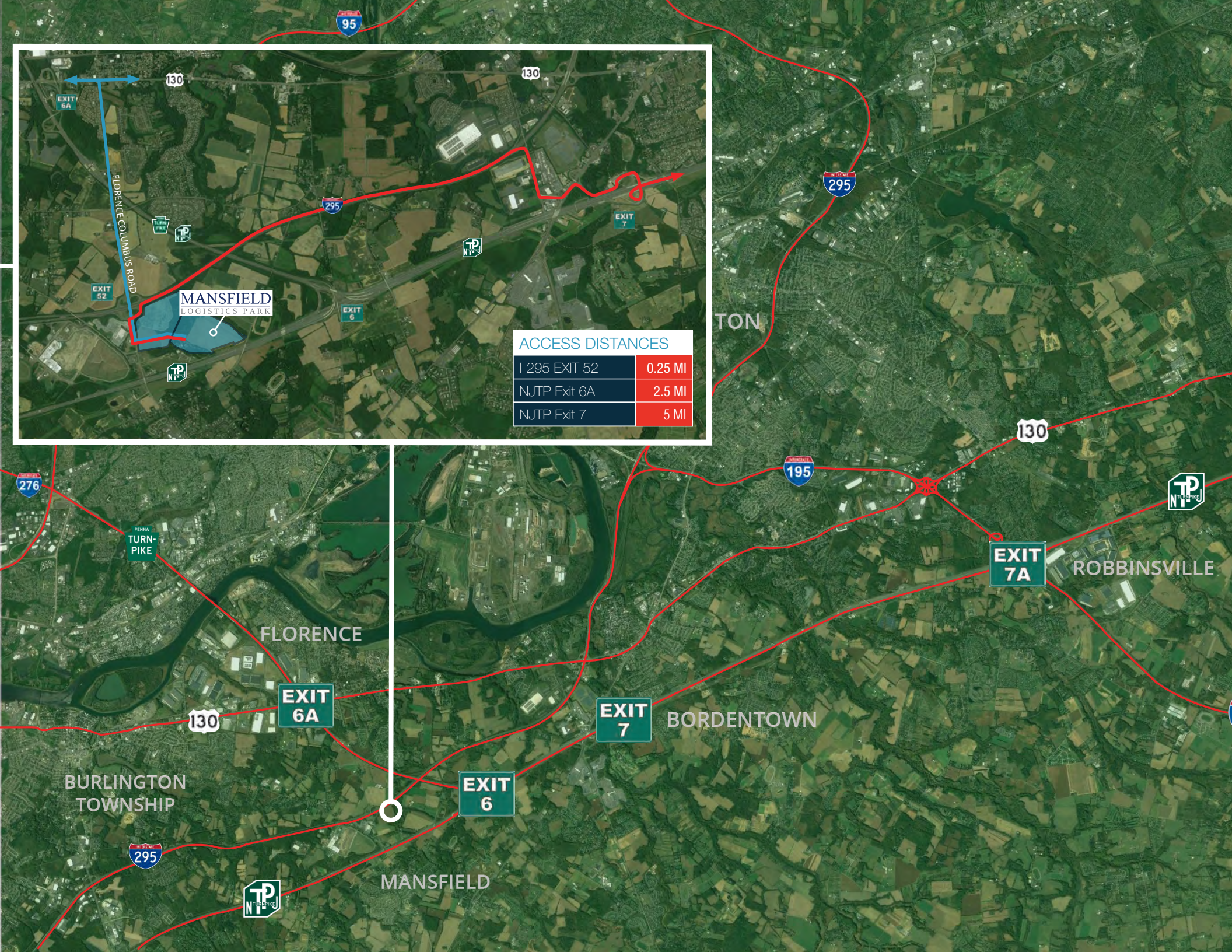
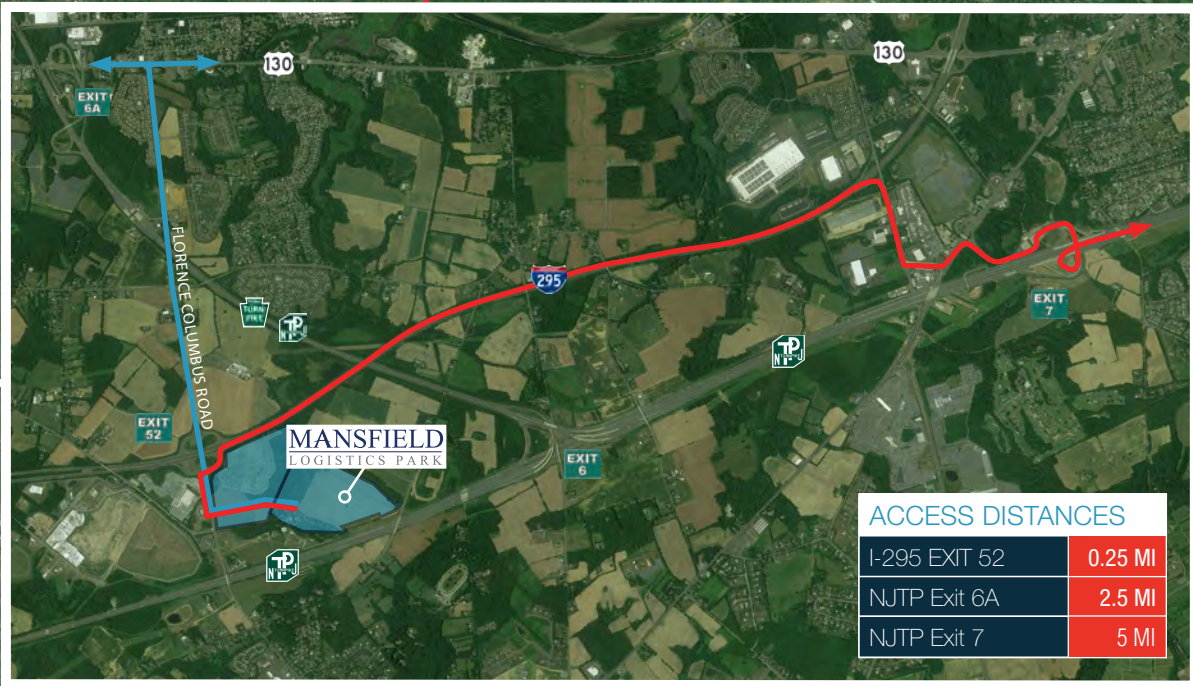


- ±806,000 square feet
- Building dimensions: 650' x 1240'
- Office area to suit
- 40' minimum clear height (measured at underside of steel joist at first column line from loading walls)
- 121 (9'x10') dock doors in a cross-dock format (equipment to suit)
- 4 (12'x14') drive-in doors on grade
- 243 trailer spaces
- 432 car parking spaces
- Standard column spacing of 50' x 56' with 75' speed bays
- 8" thick, 4000 PSI non-reinforced concrete slab on grade
- LED light fixtures with motion sensors to suit
- ESFR sprinkler system
- Roof mounted, gas-fired, Cambridge heating units
- 4,000 amp 277/480 volt, 3-phase electrical service
- Fully circulating design with ability to secure



BUILDING SPECIFICATIONS:

BLDG. 3	
BUILDING SIZE	806,000 SF
BUILDING DIMENSIONS	650' x 1240'
CAR PARKING	432
TRAILER PARKING	243
DOCK DOCKS	121
DRIVE-IN DOORS	4





**TOTAL
LABOR FORCE**

262,289

5.3% of the state's total labor force



UNEMPLOYMENT RATE

18.0%

vs 15.1% state wide



**TRANSPORTATION/
WAREHOUSE EMPLOYEES**

10,855

5.13% of the state's Transportation/Warehouse workforce



TOTAL POPULATION

485,787

5.33% of the state's total population

PROJECT HIGHLIGHTS

- Long term PILOT
- Immediate access to Interstate 295 at Exit 52 and proximate connectivity to the NJ & PA Turnpikes + US 130.
- Local/dense availability of labor.
- Best in class project design features.
- Institutional/professional joint-venture partnership with long-term commitment to ownership in Central New Jersey.

*2020 STATS WITHIN A 10 MILE RADIUS

MANSFIELD

LOGISTICS PARK



Nate Demetsky
p: +1 732 590-4184
nate.demetsky@am.jll.com

Dean Torosian
p: +1 856 324-5312
dean.torosian@am.jll.com

Matt Kemery
p: +1 856 324-5313
matt.kemery@am.jll.com

 CLARION PARTNERS MRP | INDUSTRIAL
www.clarionpartners.com



©2020 Jones Lang LaSalle IP, Inc. All rights reserved.
All information contained herein is from sources deemed reliable; however,
no representation or warranty is made to the accuracy thereof.