

# 14951 South Dixie Highway

Palmetto Bay, Florida 33176

## Property Features

- Lease Rate: \$22.00/SF (NNN)
- Building Size: 10,500 SF
- Land Size: 28,400 SF
- Zoning: B-1, City of Palmetto Bay
- Large Monument Sign
- Ideal for a variety of retail uses.
- Adjacent to the new Aldi store and Equity One's Coral Reef Shopping Center.
- Located in one of Miami's most affluent suburbs.

For Leasing Information:

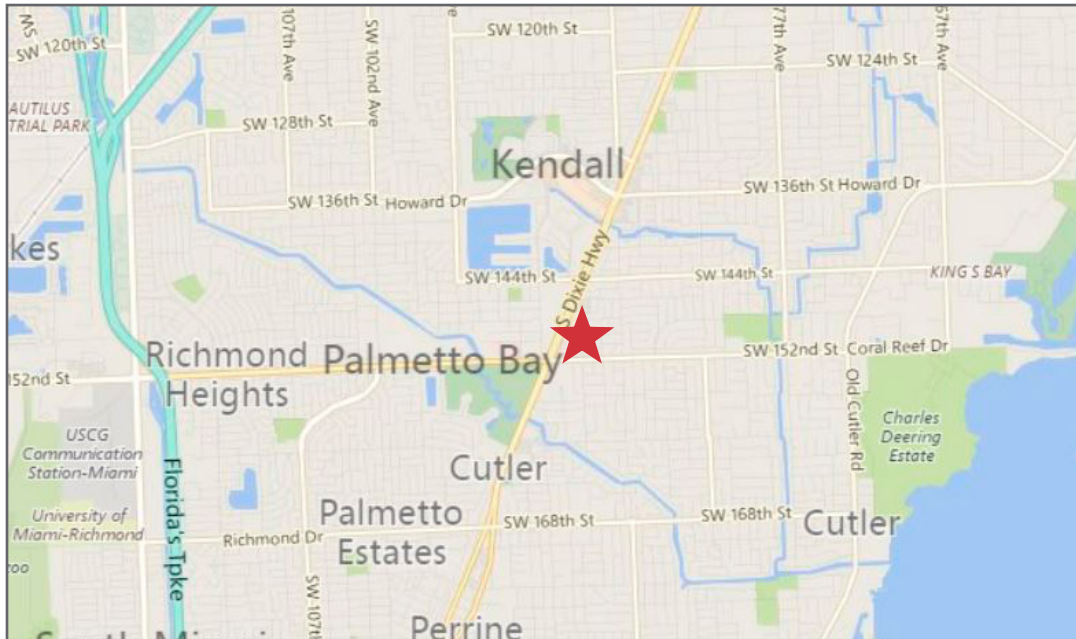
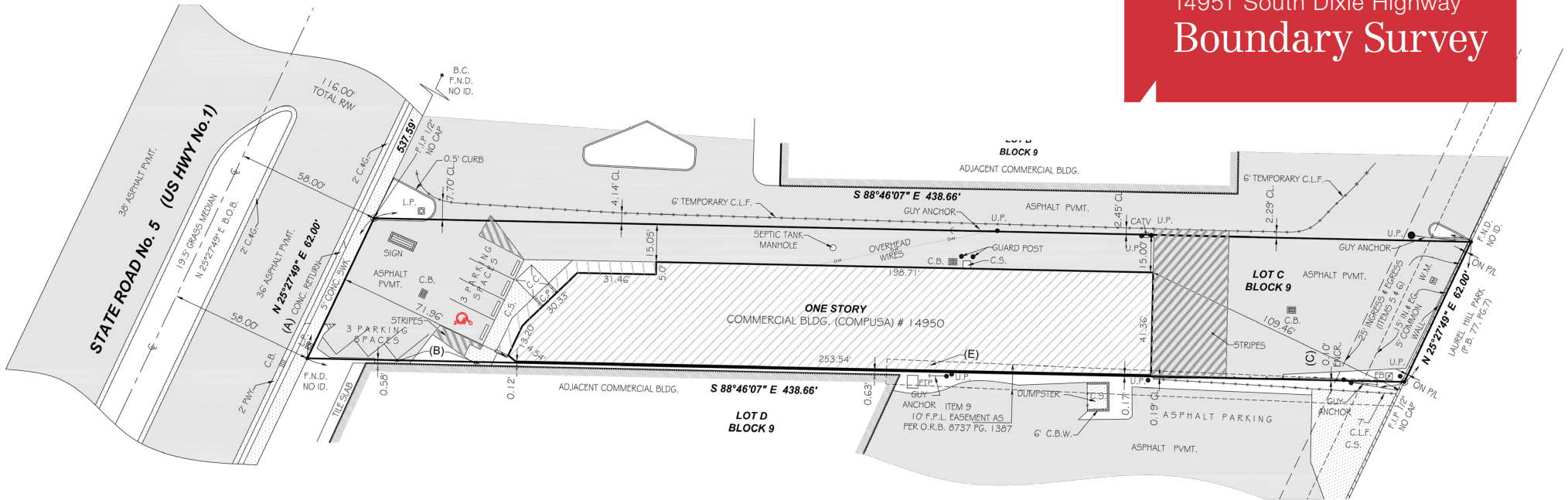
**Edward Schmidt, CCIM**

+1 786 260 0401 • [eschmidt@naimiami.com](mailto:eschmidt@naimiami.com)

For Lease  
Retail Space



# 14951 South Dixie Highway Boundary Survey



## Demographics

	1 Mile	3 Mile	5 Mile
POPULATION	11,384	94,157	277,555
AVE. HH INCOME	\$118,975	\$118,372	\$93,893
TRAFFIC COUNT	94,249 vehicles per day		

For Leasing Information:

**Edward Schmidt, CCIM**

+1 786 260 0401 • [eschmidt@naimiami.com](mailto:eschmidt@naimiami.com)

NO WARRANTY OR REPRESENTATION, EXPRESS OR IMPLIED, IS MADE AS TO THE ACCURACY OF THE INFORMATION CONTAINED HEREIN, AND THE SAME IS SUBMITTED SUBJECT TO ERRORS, OMISSIONS, CHANGE OF PRICE, RENTAL OR OTHER CONDITIONS, PRIOR SALE, LEASE OR FINANCING, OR WITHDRAWAL WITHOUT NOTICE, AND OF ANY SPECIAL LISTING CONDITIONS IMPOSED BY OUR PRINCIPALS NO WARRANTIES OR REPRESENTATIONS ARE MADE AS TO THE CONDITION OF THE PROPERTY OR ANY HAZARDS CONTAINED THEREIN ARE ANY TO BE IMPLIED.

9655 South Dixie Hwy Suite 300

Miami, Florida

+1 305 938 4000

[naimiami.com](http://naimiami.com)

Lic. Real Estate Broker