

KEARNY MESA BUSINESS CENTER

5715 - 5745 KEARNY VILLA ROAD, SAN DIEGO, CA 92123



**CUSHMAN &
WAKEFIELD**

RYAN DOWNING

858.546.5416

ryan.downing@cushwake.com

CA Lic: 01955032

SAMANTHA ALSTON

858.334.4030

samantha.alston@cushwake.com

CA Lic: 02068634

BRANT ABERG, SIOR

858.546.5464

brant.aberg@cushwake.com

CA Lic: 01773573

4747 Executive Drive

9th Floor

San Diego, CA 92121

O: (858) 546-5400

F: (858) 630-6320

cushmanwakefield.com

KEARNY MESA BUSINESS CENTER

5715 - 5745 KEARNY VILLA ROAD, SAN DIEGO, CA 92123

SNAPSHOT OF AVAILABILITY

5715 Kearny Villa Rd.

100% Leased

5725 Kearny Villa Rd.

Suite D 1,428 SF \$1.75 IG Available now.

Suite F 1,428 SF \$1.75 IG Available now.

5735 Kearny Villa Rd.

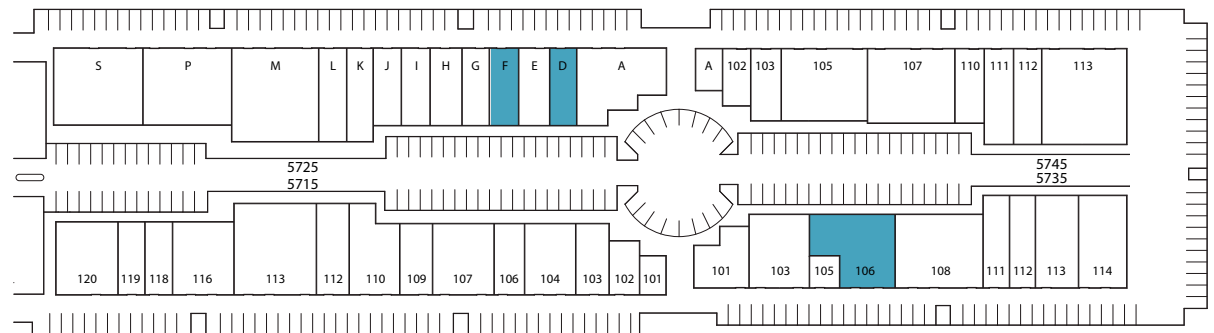
Suite 106 3,715 SF \$1.70 IG Available now.

5745 Kearny Villa Rd.

100% Leased

MULTI-TENANT INDUSTRIAL SUITES

- Approximately 106,310 SF Multi-Tenant Industrial R&D Park in (4) Buildings
- Outstanding Central San Diego Location
- Excellent Access to Highway I-15, Hwys 163 & 52
- Locally managed
- Signage fronting Kearny Villa Road
- Grade Level Loading
- 14' - 16' Clearance



SITE PLAN



RYAN DOWNING
858.546.5416
ryan.downing@cushwake.com
CA Lic: 01955032

SAMANTHA ALSTON
858.334.4030
samantha.alston@cushwake.com
CA Lic: 02068634

BRANT ABERG, SIOR
858.546.5464
brant.aberg@cushwake.com
CA Lic: 01773573

4747 Executive Drive
9th Floor
San Diego, CA 92121
O: (858) 546-5400
F: (858) 630-6320
cushmanwakefield.com

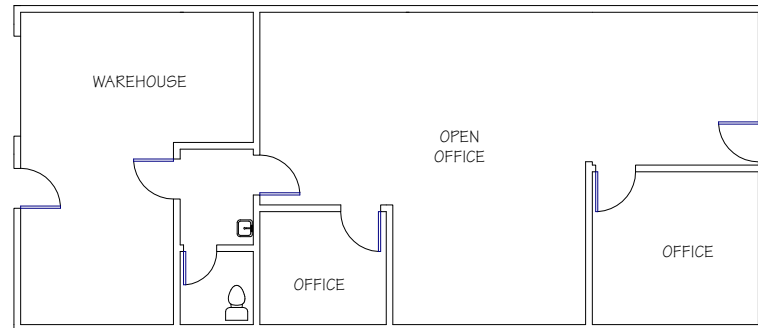
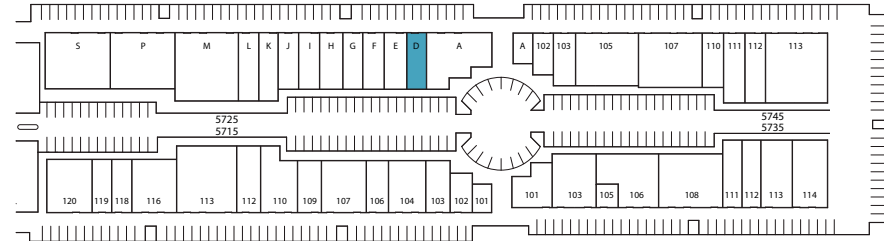
KEARNY MESA BUSINESS CENTER

5715 - 5745 KEARNY VILLA ROAD, SAN DIEGO, CA 92123

5725 KEARNY VILLA RD

SUITE D

- 1,428 SF
- TWO (2) PRIVATE OFFICES, OPEN OFFICE AREA, BALANCE WAREHOUSE
- ONE (1) RESTROOM
- ONE (1) GRADE LEVEL LOADING DOOR
- \$1.75 INDUSTRIAL GROSS



RYAN DOWNING
858.546.5416
ryan.downing@cushwake.com
CA Lic: 01955032

SAMANTHA ALSTON
858.334.4030
samantha.alston@cushwake.com
CA Lic: 02068634

BRANT ABERG, SIOR
858.546.5464
brant.aberg@cushwake.com
CA Lic: 01773573

4747 Executive Drive
9th Floor
San Diego, CA 92121
O: (858) 546-5400
F: (858) 630-6320
cushmanwakefield.com

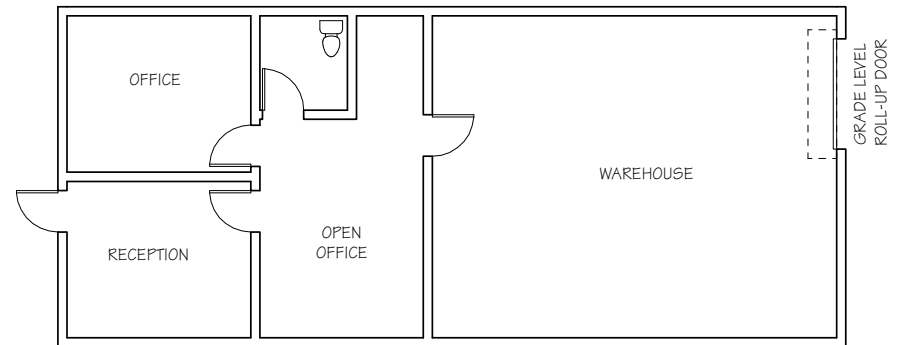
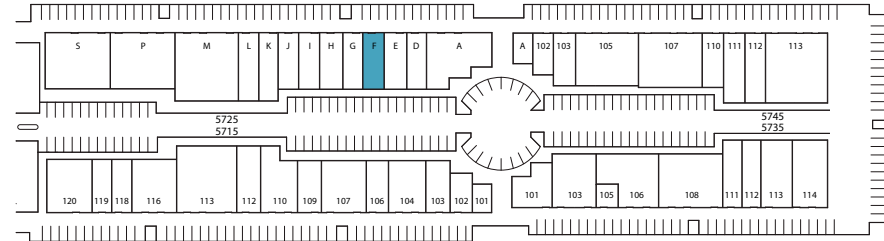
KEARNY MESA BUSINESS CENTER

5715 - 5745 KEARNY VILLA ROAD, SAN DIEGO, CA 92123

5725 KEARNY VILLA RD

SUITE F

- 1,428 SF
- ±40% OFFICE AREA
- ±60% WAREHOUSE AREA
- RECEPTION, ONE (1) PRIVATE OFFICE AND OPEN OFFICE
- ONE (1) RESTROOM
- ONE (1) GRADE LEVEL LOADING DOOR
- \$1.75 INDUSTRIAL GROSS



RYAN DOWNING
858.546.5416
ryan.downing@cushwake.com
CA Lic: 01955032

SAMANTHA ALSTON
858.334.4030
samantha.alston@cushwake.com
CA Lic: 02068634

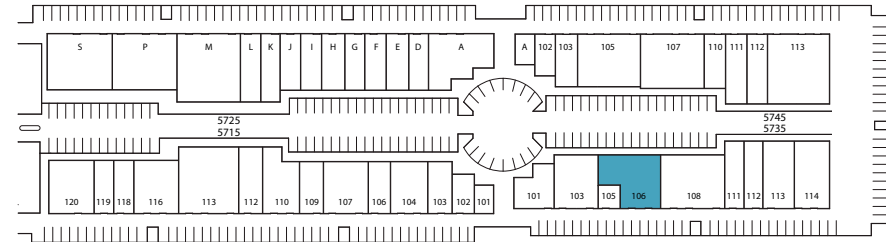
BRANT ABERG, SIOR
858.546.5464
brant.aberg@cushwake.com
CA Lic: 01773573

4747 Executive Drive
9th Floor
San Diego, CA 92121
O: (858) 546-5400
F: (858) 630-6320
cushmanwakefield.com

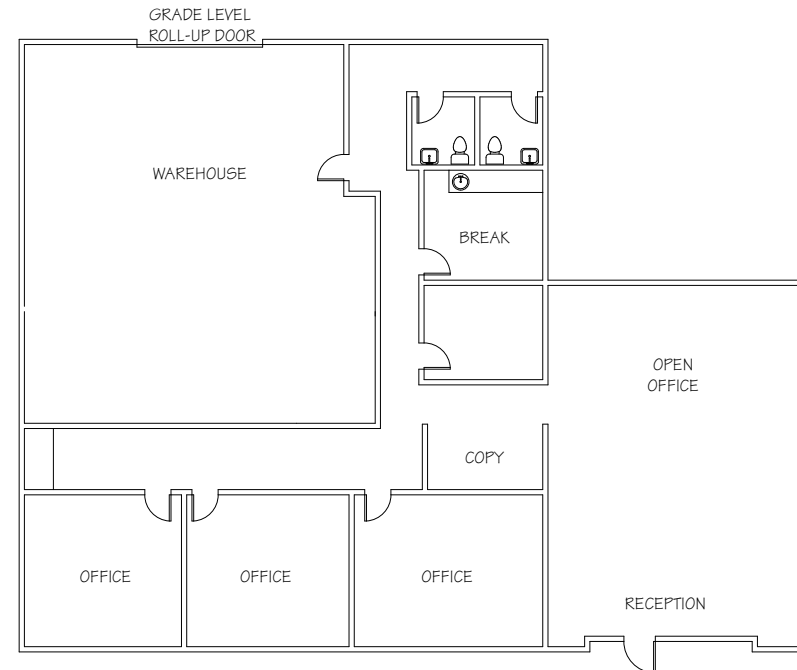
KEARNY MESA BUSINESS CENTER

5715 - 5745 KEARNY VILLA ROAD, SAN DIEGO, CA 92123

5735 KEARNY VILLA RD SUITE 106



- 3,715 SF
- ±70% OFFICE AREA
- ±30% WAREHOUSE AREA
- ONE (1) BREAK ROOM
- TWO (2) RESTROOMS
- ONE (1) GRADE LEVEL LOADING DOOR
- \$1.70 INDUSTRIAL GROSS



RYAN DOWNING
858.546.5416
ryan.downing@cushwake.com
CA Lic: 01955032

SAMANTHA ALSTON
858.334.4030
samantha.alston@cushwake.com
CA Lic: 02068634

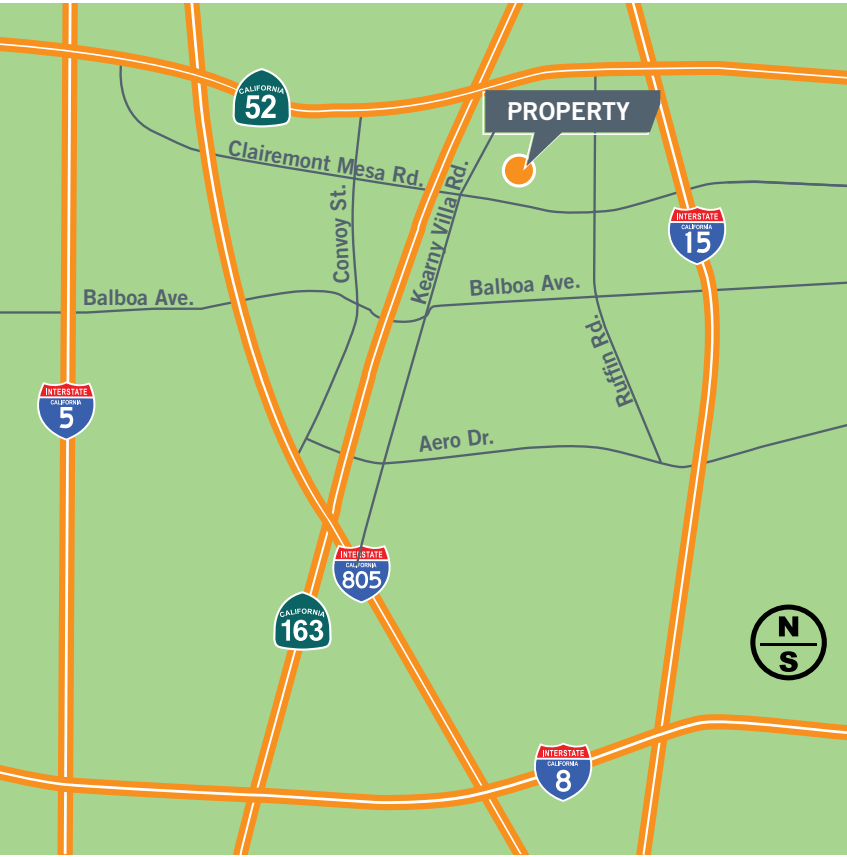
BRANT ABERG, SIOR
858.546.5464
brant.aberg@cushwake.com
CA Lic: 01773573

4747 Executive Drive
9th Floor
San Diego, CA 92121
O: (858) 546-5400
F: (858) 630-6320
cushmanwakefield.com

KEARNY MESA BUSINESS CENTER

5715 - 5745 KEARNY VILLA ROAD, SAN DIEGO, CA 92123

LOCATOR MAP



AMENITIES



RYAN DOWNING
858.546.5416
ryan.downing@cushwake.com
CA Lic: 01955032

SAMANTHA ALSTON
858.334.4030
samantha.alston@cushwake.com
CA Lic: 02068634

BRANT ABERG, SIOR
858.546.5464
brant.aberg@cushwake.com
CA Lic: 01773573

4747 Executive Drive
9th Floor
San Diego, CA 92121
O: (858) 546-5400
F: (858) 630-6320
cushmanwakefield.com

KEARNY MESA BUSINESS CENTER

LESSLER'S
HEALTH & BEAUTY

[VIEW SITE SPECIFIC COVID-19 PREVENTION PLAN](#)



HARSCH
INVESTMENT
PROPERTIES



CUSHMAN &
WAKEFIELD

RYAN DOWNING

858.546.5416

ryan.downing@cushwake.com

CA Lic: 01955032

SAMANTHA ALSTON

858.334.4030

samantha.alston@cushwake.com

CA Lic: 02068634

BRANT ABERG, SIOR

858.546.5464

brant.aberg@cushwake.com

CA Lic: 01773573

4747 Executive Drive

9th Floor

San Diego, CA 92121

O: (858) 546-5400

F: (858) 630-6320

cushmanwakefield.com