



WALDO MARKET RETAIL FOR LEASE

7422 Wornall Road, Kansas City, Missouri



LEASE RATE: \$1,500-\$1,750/MONTH | 1,200 SF TO 1,800 SF SPACE

DEMOGRAPHICS

	1 mile	3 miles	5 miles
Estimated Population	14,586	95,574	243,431
Avg. Household Income	\$124,575	\$129,554	\$99,564

- Great retail space available on the Wornall Road corridor
- High visibility / high traffic location on Wornall Road
- Located in the heart of Waldo
- Traffic counts over 18,000 cars per day



CLICK HERE TO VIEW MORE LISTING INFORMATION

For More Information Contact:

DANIEL BROCATO | 816.412.7303 | dbrocato@blockandco.com

MARSHAL BLOUNT | 816.412.7342 | mblount@blockandco.com

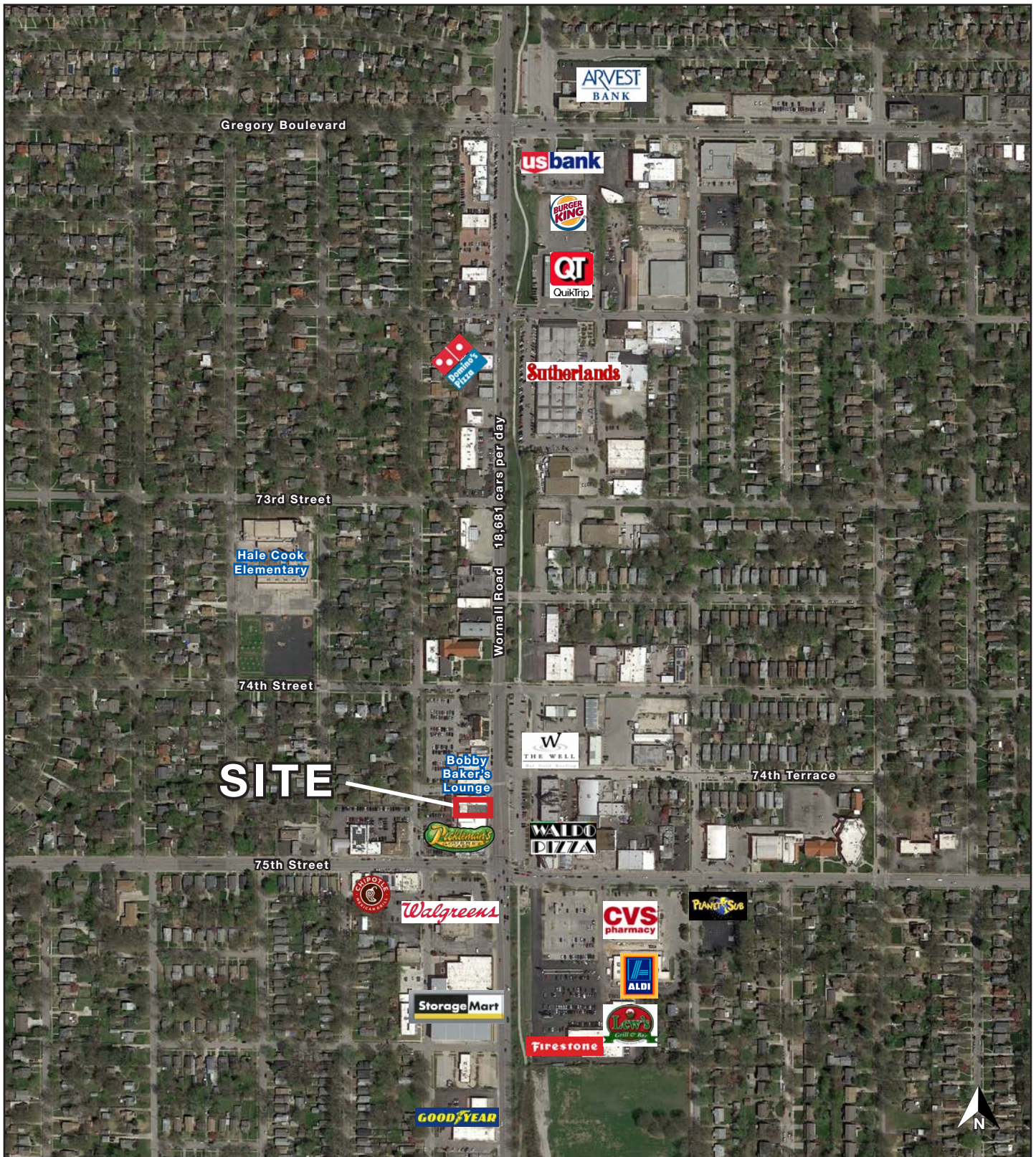
Exclusive Agents



PHOTOS



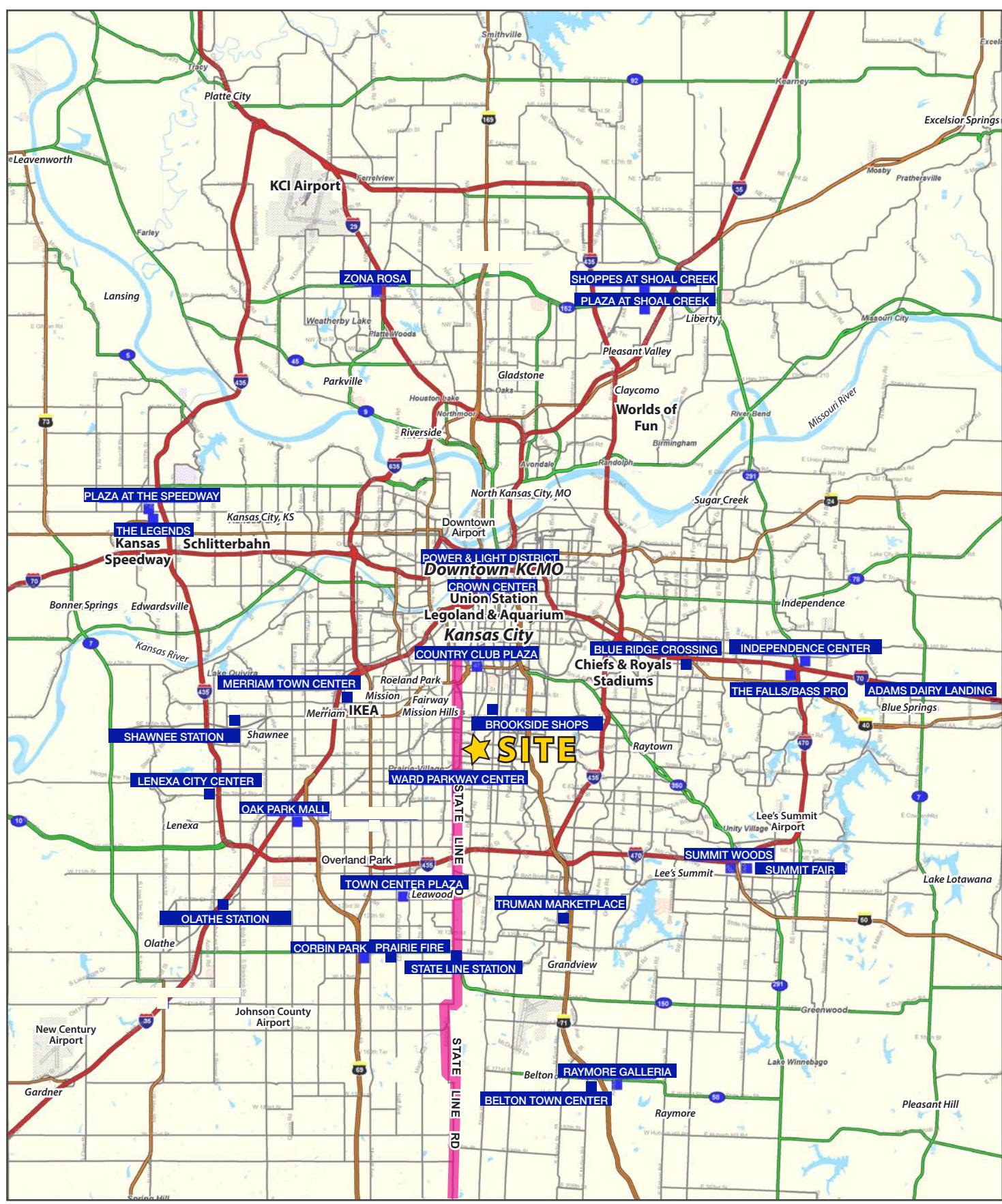
AERIAL





WALDO MARKET RETAIL FOR LEASE

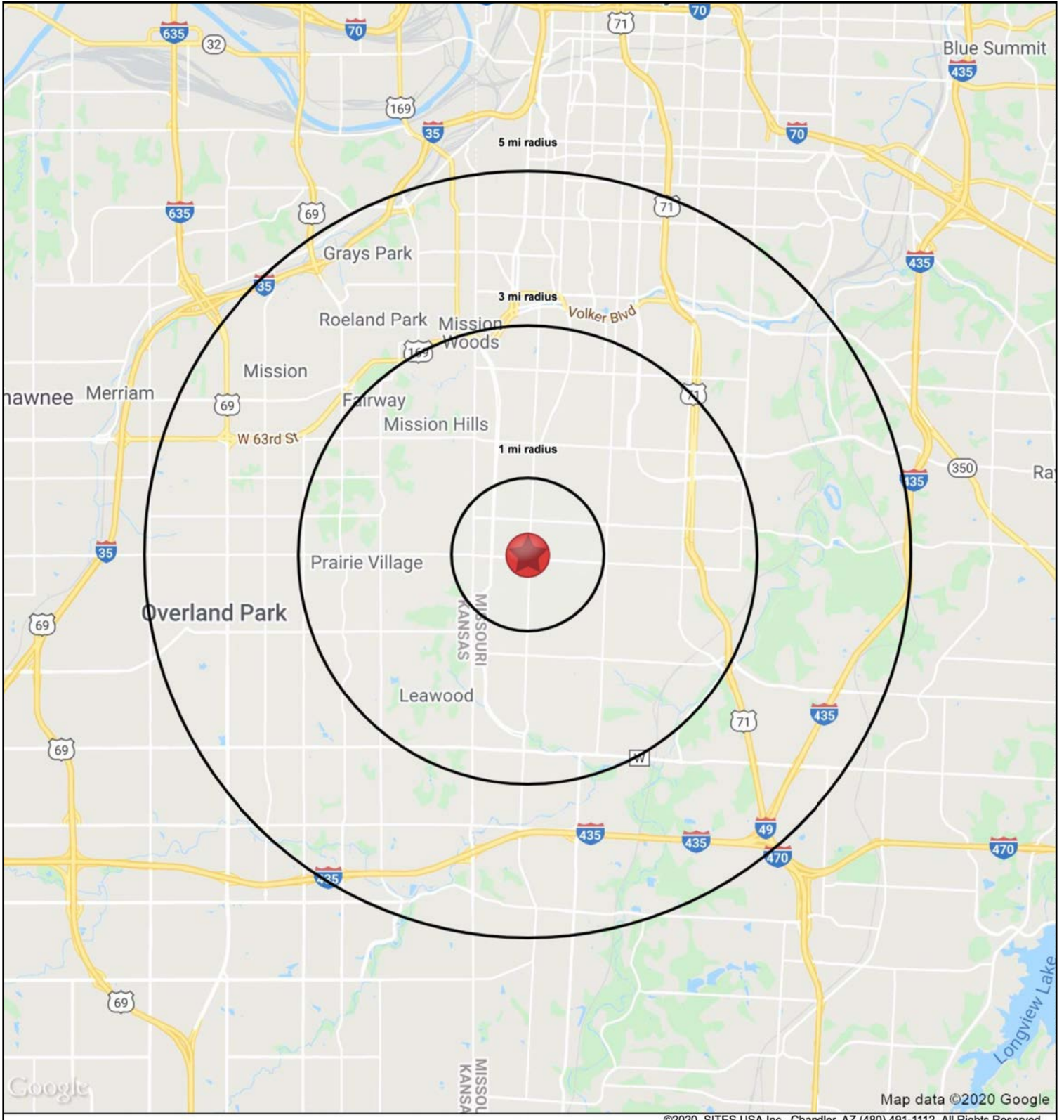
7422 Wornall Road, Kansas City, Missouri



All information furnished regarding property for sale or lease is from sources deemed reliable, but no warranty or representation is made as to the accuracy thereof and the same is subject to errors, omissions, changes of prices, rental or other conditions, prior sale or lease or withdrawal without notice.

WALDO MARKET RETAIL FOR LEASE

7422 Wornall Road, Kansas City, Missouri





WALDO MARKET RETAIL FOR LEASE

7422 Wornall Road, Kansas City, Missouri

HS1

7422 Wornall Road		1 mi radius	3 mi radius	5 mi radius
Kansas City, MO 64114				
POPULATION	2020 Estimated Population	14,586	95,574	243,431
	2025 Projected Population	14,553	97,922	253,519
	2010 Census Population	14,672	94,010	232,079
	2000 Census Population	15,030	99,699	249,692
	Projected Annual Growth 2020 to 2025	-	0.5%	0.8%
	Historical Annual Growth 2000 to 2020	-0.1%	-0.2%	-0.1%
	2020 Median Age	37.8	39.8	39.1
HOUSEHOLDS	2020 Estimated Households	7,151	42,661	115,365
	2025 Projected Households	7,209	44,325	121,619
	2010 Census Households	7,087	41,061	107,040
	2000 Census Households	7,131	42,829	113,435
	Projected Annual Growth 2020 to 2025	0.2%	0.8%	1.1%
	Historical Annual Growth 2000 to 2020	-	-	-
RACE AND ETHNICITY	2020 Estimated White	84.5%	67.0%	66.0%
	2020 Estimated Black or African American	9.0%	27.0%	24.6%
	2020 Estimated Asian or Pacific Islander	2.0%	1.9%	3.0%
	2020 Estimated American Indian or Native Alaskan	0.4%	0.3%	0.4%
	2020 Estimated Other Races	4.0%	3.8%	6.0%
	2020 Estimated Hispanic	5.2%	4.1%	7.8%
INCOME	2020 Estimated Average Household Income	\$124,575	\$129,554	\$99,564
	2020 Estimated Median Household Income	\$95,342	\$93,521	\$76,919
	2020 Estimated Per Capita Income	\$61,139	\$57,912	\$47,276
EDUCATION (AGE 25+)	2020 Estimated Elementary (Grade Level 0 to 8)	0.7%	1.1%	1.6%
	2020 Estimated Some High School (Grade Level 9 to 11)	1.7%	3.7%	4.1%
	2020 Estimated High School Graduate	11.8%	16.8%	18.3%
	2020 Estimated Some College	15.4%	17.2%	18.5%
	2020 Estimated Associates Degree Only	5.1%	5.3%	6.1%
	2020 Estimated Bachelors Degree Only	38.7%	32.6%	30.6%
	2020 Estimated Graduate Degree	26.6%	23.4%	20.7%
BUSINESS	2020 Estimated Total Businesses	704	3,892	13,355
	2020 Estimated Total Employees	5,666	41,780	156,414
	2020 Estimated Employee Population per Business	8.1	10.7	11.7
	2020 Estimated Residential Population per Business	20.7	24.6	18.2

