

# PRIME OFFICE SPACE AVAILABLE FOR LEASE

1124 East Ridgewood Avenue  
Ridgewood, NJ, 07450



BIOC Commercial Real Estate, LLC



## Available Office Suite:

- 25,084 SF Building
- 1,000 SF Suite
- Three rooms
- Ample On Site Parking
- Close to Route 17 and the Garden State Parkway
- Near Downtown Ridgewood and Valley Hospital



- **Asking \$5,500 per month**



**BIOC Commercial Real Estate, LLC**

*“In the Best Interest of Our Clients”*

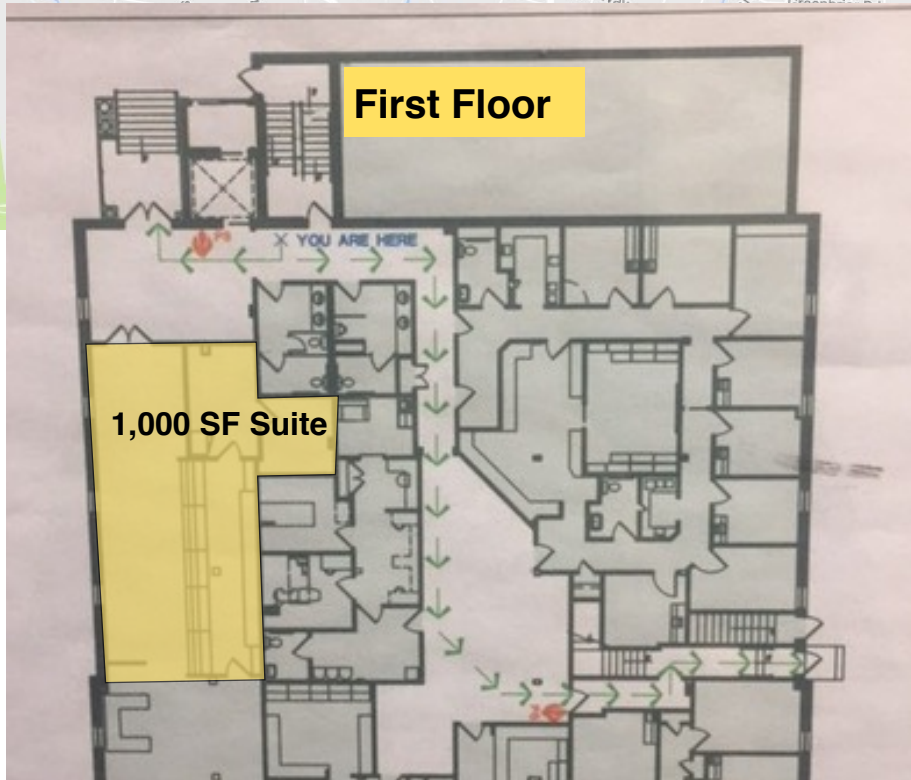
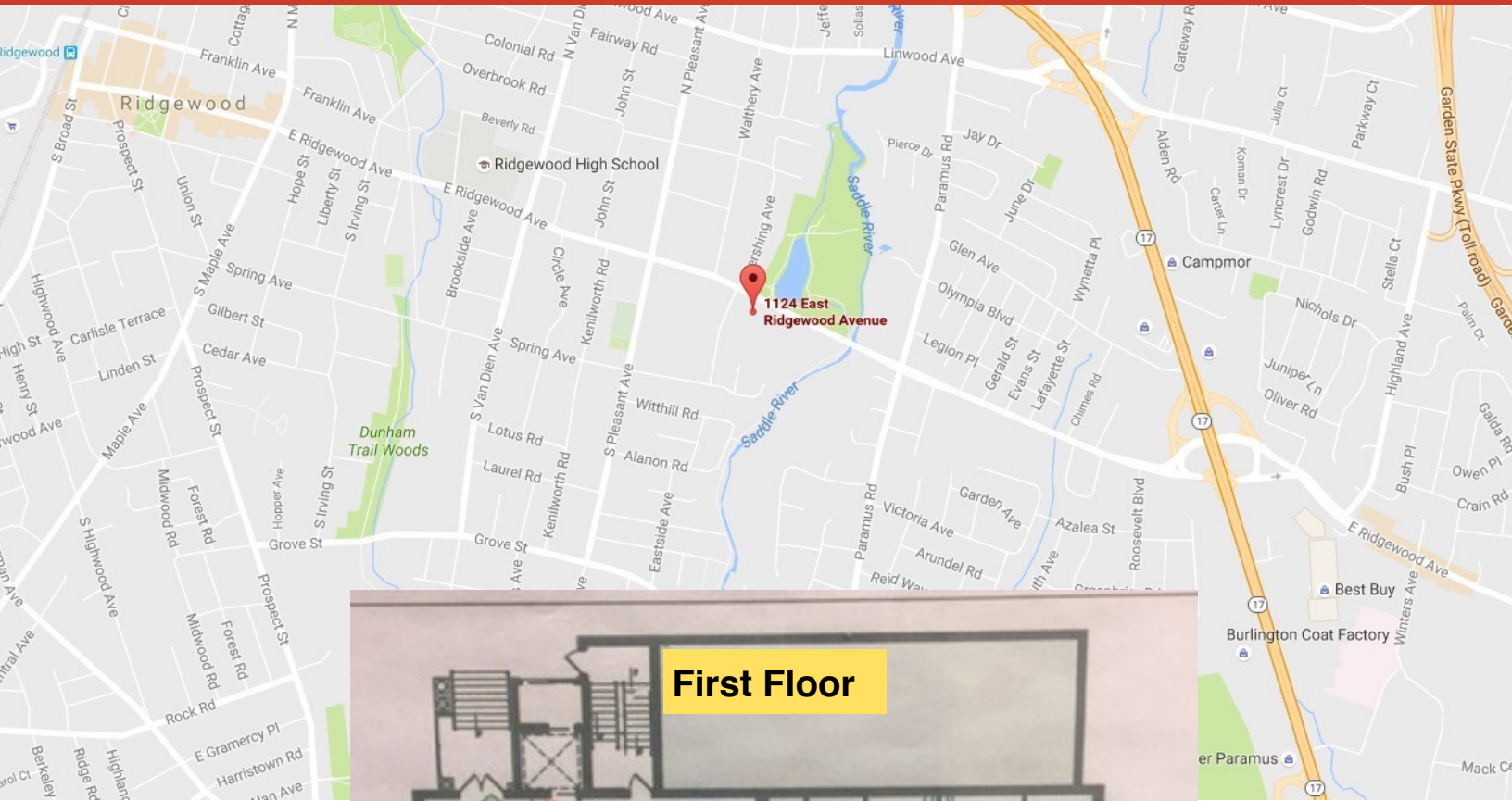


# PRIME OFFICE SPACE AVAILABLE FOR LEASE

1124 East Ridgewood Avenue  
Ridgewood, NJ, 07450



BIOC Commercial Real Estate, LLC



For more information, contact exclusive agents:

Jonathan D. Stravitz  
[jstravitz@biocre.com](mailto:jstravitz@biocre.com)  
201.232.2767

John B. Aires  
[jaires@biocre.com](mailto:jaires@biocre.com)  
201.978.6040



BIOC Commercial Real Estate 6 East 39th Street, Suite 304, New York, New York 10016