



broker *Alert*

# Starbucks Ojai Valley Farms

For a Tour

Jeffrey Becker  
805.653.6794 ext. 201  
jbecker@beckergrp.com

Hutton Becker  
805.653.6794 ext. 212  
hbecker@beckergrp.com

Jenny Petty  
805.653.6794 ext. 203  
jpetty@beckergrp.com



Real Estate Investments | Property Management  
Real Estate Investments | Property Management

Office Address | 40 South Ash Street Ventura, CA 93001    Mailing Address | Post Office Box 23277, Ventura, CA 93002  
Telephone | 805.653.6794    Facsimile | 805.653.6795    License | 01213236    Web | www.beckergrp.com

The information above has been obtained from sources believed reliable. While we do not doubt it's accuracy, we have not verified it and make no guarantee, warranty or representation about it. It is your responsibility to independently confirm it's accuracy and completeness. Any projections, opinions, assumption or estimates used are for example only and do not represent the current or future performance of the property. The value of this transaction to you depends on tax and other factors which should be evaluated by your tax, financial and legal advisors. You and your advisors should conduct a careful independent investigation of the property to determine to your satisfaction the stability of the property for your needs.



# Ojai Valley Equestrian Estate

10901 Creek Road Ojai • California



*Step outside to your outdoor entertaining space which includes a swimming pool, spa surrounded by river rock patios and a built-in grill.*

**\$ 2,995,000**

In Ojai's Picturesque Valley awaits your personal rejuvenation retreat. This Breathtaking Equestrian Estate, just 4.7 miles from Downtown Ojai.

Towering Oaks shade the secluded Ranch/Lodge-Style home. Designed by local award-winning *Whitman Architectural Design*, this home boasts vaulted wood beamed ceilings, rock feature accents and a grand fireplace among the many details found throughout this estate.

The 5,000 square foot split level design provides five bedrooms, five bathrooms, a formal and casual dining room, game room, media room, spacious master suite, and much more.

Real Estate Investments | Property Management  
Real Estate Investments | Property Management

Office Address | 40 South Ash Street Ventura, CA 93001    Mailing Address | Post Office Box 23277, Ventura, CA 93002  
Telephone | 805.653.6794    Facsimile | 805.653.6795    License | 01213236    Web | [www.beckergrp.com](http://www.beckergrp.com)

The information above has been obtained from sources believed reliable. While we do not doubt it's accuracy, we have not verified it and make no guarantee, warranty or representation about it. It is your responsibility to independently confirm it's accuracy and completeness. Any projections, opinions, assumption or estimates used are for example only and do not represent the current or future performance of the property. The value of this transaction to you depends on tax and other factors which should be evaluated by your tax, financial and legal advisors. You and your advisors should conduct a careful independent investigation of the property to determine to your satisfaction the stability of the property for your needs.



# Starbucks Ojai Valley Farms

Situated on an approximate 13 acre property, it is an operational and income generating equestrian center.

**Facilities include:** main barn with sixty 12 x 12 indoor stalls | twenty 12 x 24 covered paddocks | 4 indoor wash racks | 2 tack rooms | 320' x 120' show arena | training arena | round pen | hot walkers + an office.



Real Estate Investments | Property Management  
Real Estate Investments | Property Management

Office Address | 40 South Ash Street Ventura, CA 93001    Mailing Address | Post Office Box 23277, Ventura, CA 93002  
Telephone | 805.653.6794    Facsimile | 805.653.6795    License | 01213236    Web | [www.beckergrp.com](http://www.beckergrp.com)

The information above has been obtained from sources believed reliable. While we do not doubt it's accuracy, we have not verified it and make no guarantee, warranty or representation about it. It is your responsibility to independently confirm it's accuracy and completeness. Any projections, opinions, assumption or estimates used are for example only and do not represent the current or future performance of the property. The value of this transaction to you depends on tax and other factors which should be evaluated by your tax, financial and legal advisors. You and your advisors should conduct a careful independent investigation of the property to determine to your satisfaction the stability of the property for your needs.

# Starbucks Ojai Valley Farms

interior images



# Starbucks Ojai Valley Farms

interior images

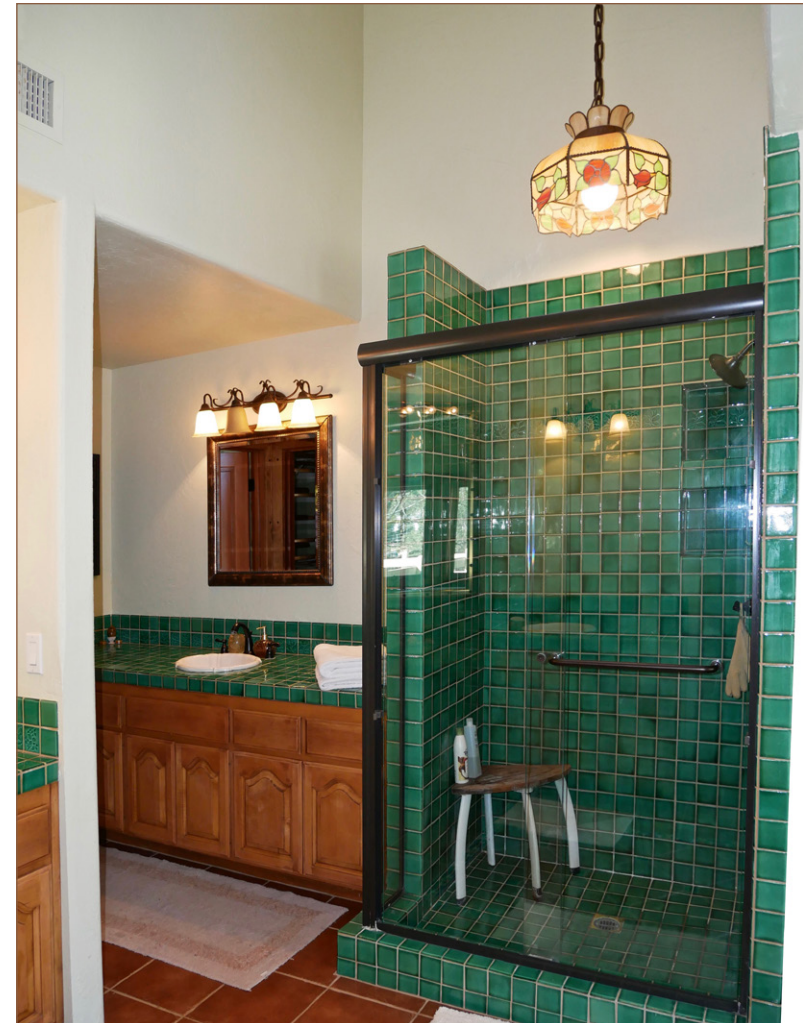


Real Estate Investments | Property Management  
Real Estate Investments | Property Management

Office Address | 40 South Ash Street Ventura, CA 93001    Mailing Address | Post Office Box 23277, Ventura, CA 93002  
Telephone | 805.653.6794    Facsimile | 805.653.6795    License | 01213236    Web | [www.beckergroup.com](http://www.beckergroup.com)

The information above has been obtained from sources believed reliable. While we do not doubt it's accuracy, we have not verified it and make no guarantee, warranty or representation about it. It is your responsibility to independently confirm it's accuracy and completeness. Any projections, opinions, assumption or estimates used are for example only and do not represent the current or future performance of the property. The value of this transaction to you depends on tax and other factors which should be evaluated by your tax, financial and legal advisors. You and your advisors should conduct a careful independent investigation of the property to determine to your satisfaction the stability of the property for your needs.







Real Estate Investments | Property Management  
Real Estate Investments | Property Management

Office Address | 40 South Ash Street Ventura, CA 93001    Mailing Address | Post Office Box 23277, Ventura, CA 93002  
Telephone | 805.653.6794    Facsimile | 805.653.6795    License | 01213236    Web | [www.beckergroup.com](http://www.beckergroup.com)

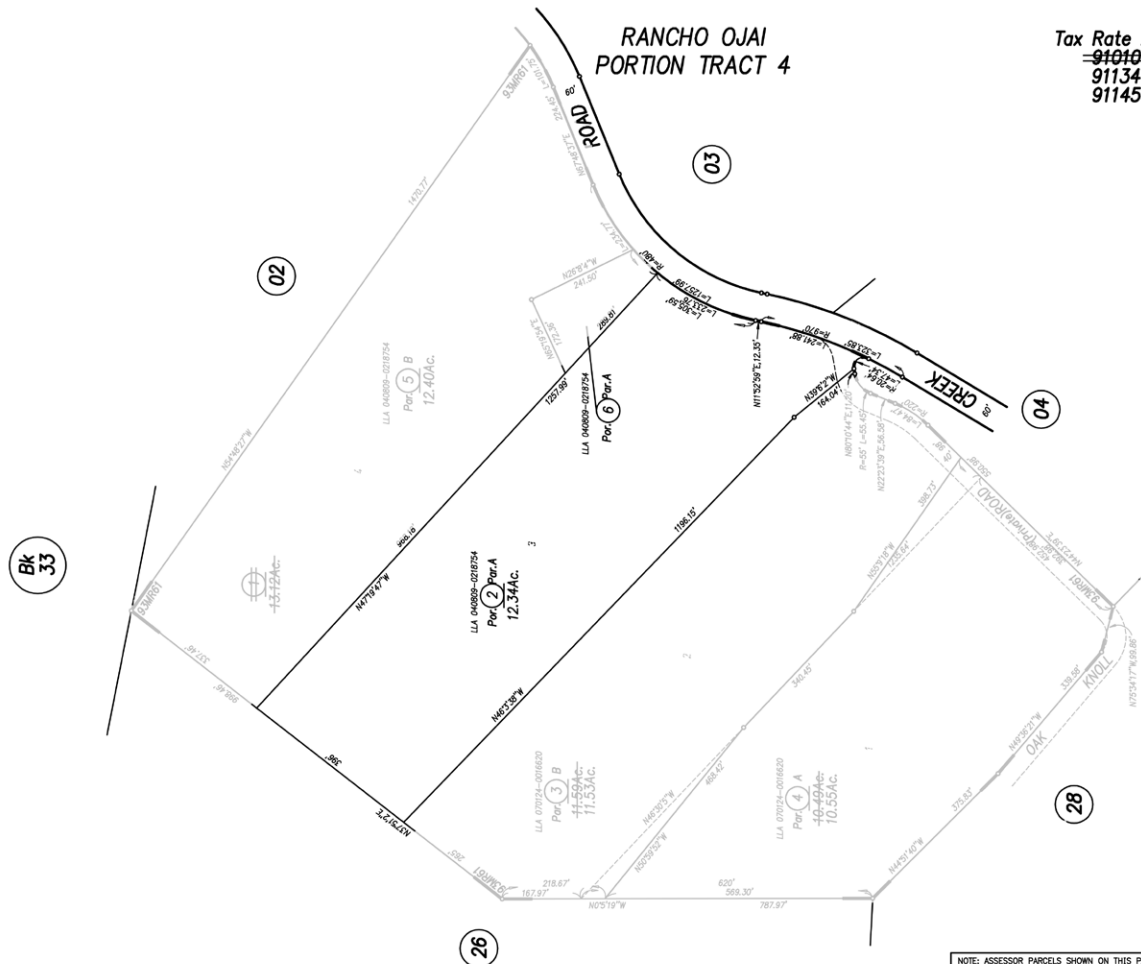
The information above has been obtained from sources believed reliable. While we do not doubt its accuracy, we have not verified it and make no guarantee, warranty or representation about it. It is your responsibility to independently confirm its accuracy and completeness. Any projections, opinions, assumption or estimates used are for example only and do not represent the current or future performance of the property. The value of this transaction to you depends on tax and other factors which should be evaluated by your tax, financial and legal advisors. You and your advisors should conduct a careful independent investigation of the property to determine to your satisfaction the stability of the property for your needs.





# Starbucks Ojai Valley Farms

parcel map



Tax Rate Area  
~~91010~~  
 91134  
 91145

34-27  
 1" = 200'

Bk 33

Tract 3540, M.R. Bk.93, Pg.61

**UNINCORPORATED AREA**  
**Ventura County Assessor's Map.**  
 Assessor's Block Numbers Shown in Ellipses.  
 Assessor's Parcel Numbers Shown in Circles.  
 Assessor's Mineral Numbers Shown in Squares.

NOTE: ASSESSOR PARCELS SHOWN ON THIS PAGE DO NOT NECESSARILY CONSTITUTE LEGAL LOTS. CHECK WITH COUNTY SURVEYOR'S OFFICE OR PLANNING DIVISION TO VERIFY.

|  |                   |                      |
|--|-------------------|----------------------|
| DRAWN  | R.S. REVISED      | 2-23-2015            |
| REDRAWN                                      | JAH CREATED       | 8-14-2007            |
| INKED  | PLOTTED/EFFECTIVE | 82-83 ROLL           |
|  | PREVIOUS          | Bk.34, Portion Pg.01 |
| Compiled By Ventura County Assessor's Office |                   |                      |

|                |         |                |                  |           |           |
|----------------|---------|----------------|------------------|-----------|-----------|
| Roll-Year      | 15-16   | BK.034 . PG.27 | REVISION LOG     | VOID      | NEW       |
| DATE           | 7/23/15 | 104350-0054765 | EXPLANATION      | A.P.N.(s) | A.P.N.(s) |
| REFERENCE DOC. |         |                | Code             | A.P.N.(s) | A.P.N.(s) |
|                |         |                | TRA. Action      |           |           |
|                |         |                | TRA. Area        |           |           |
|                |         |                | TRA. Description |           |           |
|                |         |                | TRA. Area        |           |           |