



Keegan & Coppin
COMPANY, INC.

FOR LEASE

1401 LOS GAMOS DRIVE
SAN RAFAEL, CA

Class "A" Office Space
Best Central Marin Location

REPRESENTED BY:

NATHAN BALLARD, PARTNER
LIC # 01743417 (415) 461-1010, EXT 116
NBALLARD@KEEGANCOPPIN.COM

MATT STORMS, PARTNER
LIC # 01233478 (415) 461-1010, EXT 123
MSTORMS@KEEGANCOPPIN.COM



CLASS "A" OFFICE SPACE FOR LEASE



1401 LOS GAMSO DRIVE
SAN RAFAEL, CA

**BEST CENTRAL MARIN
OFFICE LOCATION**

PROPERTY INFORMATION

HIGHLIGHTS

- Highway 101 visibility
- High-end finishes throughout
- Immediate freeway access
- General purpose floor plans
- Great glass line
- Common area kitchen, deck and conference room

OFFICE SPACE

Suite 140: 2,812+/- sq ft

Suite 150: 989+/- sq ft

Suites 140 & 150 can be combined for a total of 3,801+/- sq ft

Suite 230: 4,179+/- sq ft

Suite 240: 3,041+/- sq ft

Suites 230 & 240 can be combined for a total of 7,220+/- sq ft

DESCRIPTION

Large open area, 2 private offices, and kitchenette. Suite includes a private deck and a great glass line

Small efficient suite with 2 private offices and open area

Open office with four private offices, conference room, kitchenette and private deck

7 private offices and open work area

DESCRIPTION OF PREMISES

1401 Los Gamos is an excellent Class "A" office property overlooking Highway 101 in San Rafael. The building offers a generous glass line and beautiful hillside views. The efficient suites offer a nice mixture of private offices and open work area.

LEASE TERMS

Size

3,041+/- to 7,220+/- sq ft

Rate

\$2.50 per sq ft, Full Service

Terms

1 - 10 year lease term

Base year for operating expenses

CPI 3% - 6%

Parking

3.6 : 1,000

Total Building Size

30,499+/- sq ft / 2.42 acre site

Keegan & Coppin Co., Inc.
101 Larkspur Landing Circle, Ste. 112
Larkspur, CA 94939
www.keegancoppin.com
(415) 461-1010

The above information, while not guaranteed, has been secured from sources we believe to be reliable. Submitted subject to error, change or withdrawal. An interested party should verify the status of the property and the information herein.

REPRESENTED BY:

NATHAN BALLARD, PARTNER
LIC # 01743417 (415) 461-1010, EXT 116
NBALLARD@KEEGANCOPPIN.COM

MATT STORMS, PARTNER
LIC # 01233478 (415) 461-1010, EXT 123
MSTORMS@KEEGANCOPPIN.COM



CLASS "A" OFFICE SPACE FOR LEASE



1401 LOS GAMSO DRIVE
SAN RAFAEL, CA

**BEST CENTRAL MARIN
OFFICE LOCATION**

DESCRIPTION OF AREA

1401 Los Gamos Drive, located approximately 14 miles north of San Francisco and 15 miles south of Sonoma County, is centered in one of the Bay Area's largest employment centers. The City of San Rafael is Marin County's governmental, business and cultural center and of the Bay Area's nine-county premier live/work environments with some of the highest income and home values in the nation. The building is located just off Highway 101 at the Lucas Valley Road exit.

NEARBY AMENITIES

- Immediately adjacent to the Marin YMCA
- Close proximity to the Northgate Shopping District which includes a wide variety of services including:
 - Banks
 - Restaurants
 - Kaiser Permanente
 - Many office parks

TRANSPORTATION ACCESS

- Immediate freeway access
- Walking distance to public transportation
- 1/3 mile from SMART



REPRESENTED BY:

NATHAN BALLARD, PARTNER
LIC # 01743417 (415) 461-1010, EXT 116
NBALLARD@KEEGANCOPPIN.COM

MATT STORMS, PARTNER
LIC # 01233478 (415) 461-1010, EXT 123
MSTORMS@KEEGANCOPPIN.COM

The above information, while not guaranteed, has been secured from sources we believe to be reliable. Submitted subject to error, change or withdrawal. An interested party should verify the status of the property and the information herein.



1401 LOS GAMOS DR., SAN RAFAEL, CA FLOOR PLANS



1401 LOS GAMOD DRIVE
SAN RAFAEL, CA

**BEST CENTRAL MARIN
OFFICE LOCATION**

SUITE 140: 2,812+/- RSF

SUITE 150: 989+/- RSF

SUITES 140 & 150 CAN BE COMBINED FOR A TOTAL OF 3,801+/- SQ FT



REPRESENTED BY:

NATHAN BALLARD, PARTNER
LIC # 01743417 (415) 461-1010, EXT 116
NBALLARD@KEEGANCOPPIN.COM

MATT STORMS, PARTNER
LIC # 01233478 (415) 461-1010, EXT 123
MSTORMS@KEEGANCOPPIN.COM



1401 LOS GAMOS DR., SAN RAFAEL, CA FLOOR PLANS



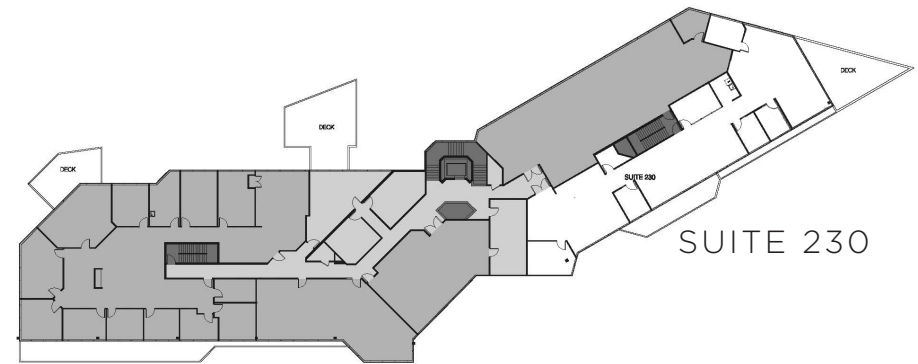
1401 LOS GAMOD DRIVE
SAN RAFAEL, CA

**BEST CENTRAL MARIN
OFFICE LOCATION**

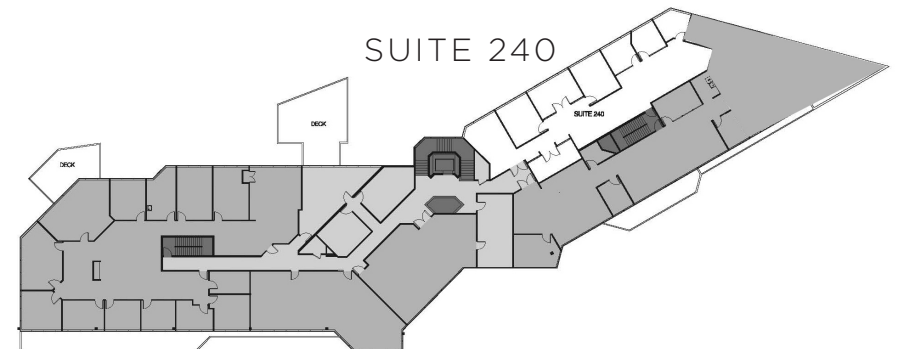
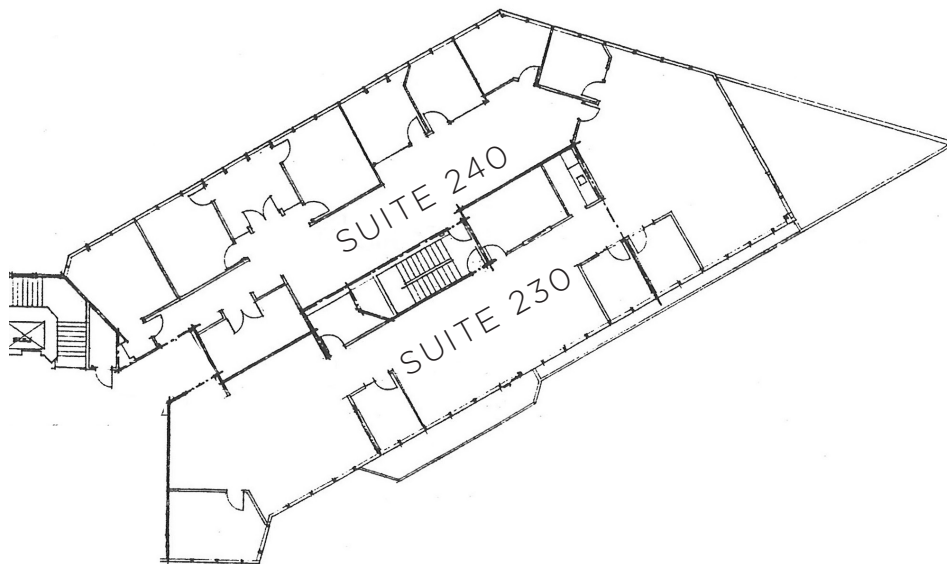
SUITE 230: 4,179+/- RSF

SUITE 240: 3,041+/- RSF

SUITES 230 & 240 CAN BE COMBINED FOR A TOTAL OF 7,220+/- SQ FT



SUITE 230



SUITE 240

REPRESENTED BY: NATHAN BALLARD, PARTNER
LIC # 01743417 (415) 461-1010, EXT 116
NBALLARD@KEEGANCOPPIN.COM

MATT STORMS, PARTNER
LIC # 01233478 (415) 461-1010, EXT 123
MSTORMS@KEEGANCOPPIN.COM

The above information, while not guaranteed, has been secured from sources we believe to be reliable. Submitted subject to error, change or withdrawal. An interested party should verify the status of the property and the information herein.