



# OFFICE FOR LEASE

80 MAIN ST, WATERVILLE, ME

5,000 - 10,000 SF



## Overview

Rare opportunity to lease space in a landmark building on Main Street in Waterville. The property is located directly across the street from the new Paul J Schupf Art Center in the heart of Waterville's downtown revitalization. Space is available on the 2nd and 3rd floors.

The property was previously used as a corporate headquarters and features an elevator, ample office space and conference room space, and access to both Main Street and the Concourse parking lot.

## Lease Information

- ✓ Lease Rate: \$11 - \$11.50 PSF (Annual)
- ✓ Lease Type: NNN
- ✓ Base monthly Rent: \$9,166 - \$9,583
- ✓ Real Estate Taxes: \$5,868 PSF (Annual)
- ✓ Date Available: July 1, 2023

**FOR MORE INFORMATION:**

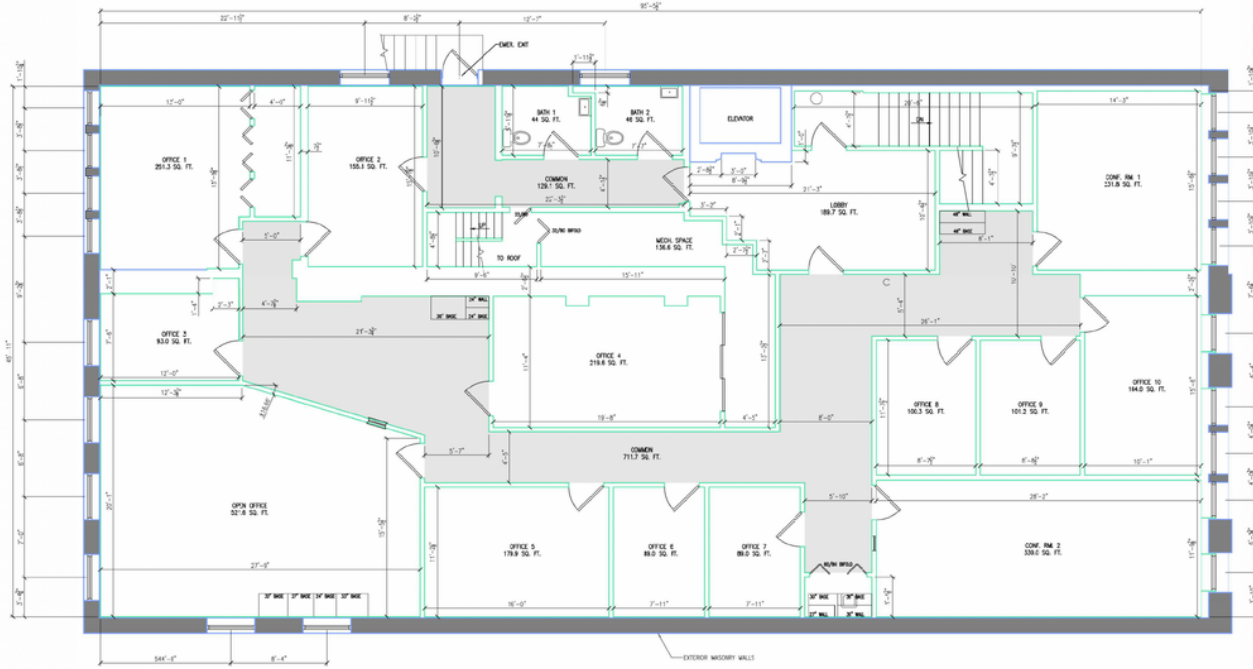
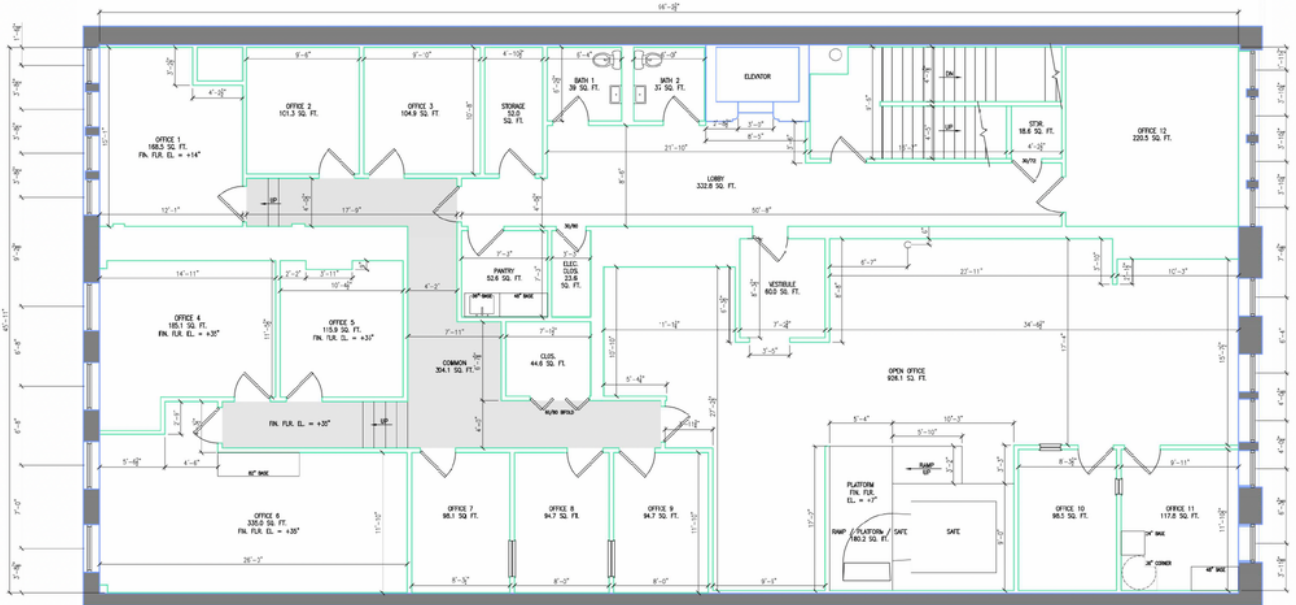
QR CODE

SCAN THIS IMAGE WITH YOUR MOBILE DEVICE.





**2nd  
Floor**



**3rd  
Floor**

**CONTACT US**



**Don Plourde**  
Designated Broker/Owner

Cell: (207) 861-2462  
Direct: (207) 660-4000  
[dplourde@cbplourde.com](mailto:dplourde@cbplourde.com)

143 Silver St, Waterville, ME ● [www.cbplourde.com](http://www.cbplourde.com)

**Jamie Plourde**  
Associate Broker

Cell: (617) 312-9073  
Direct: (207) 660-4034  
[jplourde@cbplourde.com](mailto:jplourde@cbplourde.com)

