



**PREMIER  
PROPERTIES**  
COMMERCIAL  
REAL ESTATE

# FOR LEASE

## 535 ALMA STREET

Palo Alto, CA

±2,400 Sq. Ft. Office



### **BRAD EHIKIAN**

Partner  
dre license #01736391  
☎ | 650.618.3001  
✉ | [brad.ehikian@prprop.com](mailto:brad.ehikian@prprop.com)

### **JON GOLDMAN**

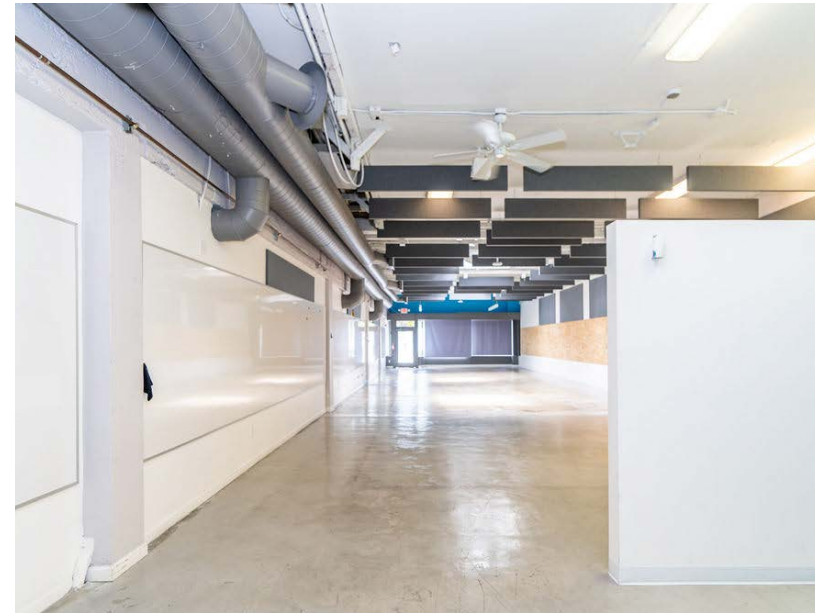
Partner  
dre license #01295503  
☎ | 650.618.3003  
✉ | [jon.goldman@prprop.com](mailto:jon.goldman@prprop.com)

### **JESSE EBNER**

Vice President  
dre license #02055989  
☎ | 650.618.3017  
✉ | [jesse.ebner@prprop.com](mailto:jesse.ebner@prprop.com)

# PROPERTY DESCRIPTION

- ▮ Unique Ground Floor Office Available
- ▮ Ideal Location in Downtown Palo Alto
- ▮ High-Visibility Signage Opportunities
- ▮ Polished Concrete Floor
- ▮ Great Skylights
- ▮ Across the Street from Caltrain Station
- ▮ Large, Open Layout
- ▮ Same Block as Public Parking Garage
- ▮ Surrounded by Downtown Restaurants & Amenities
- ▮ Easy Access to Embarcadero, El Camino Real, & U.S. 101
- ▮ Available Immediately

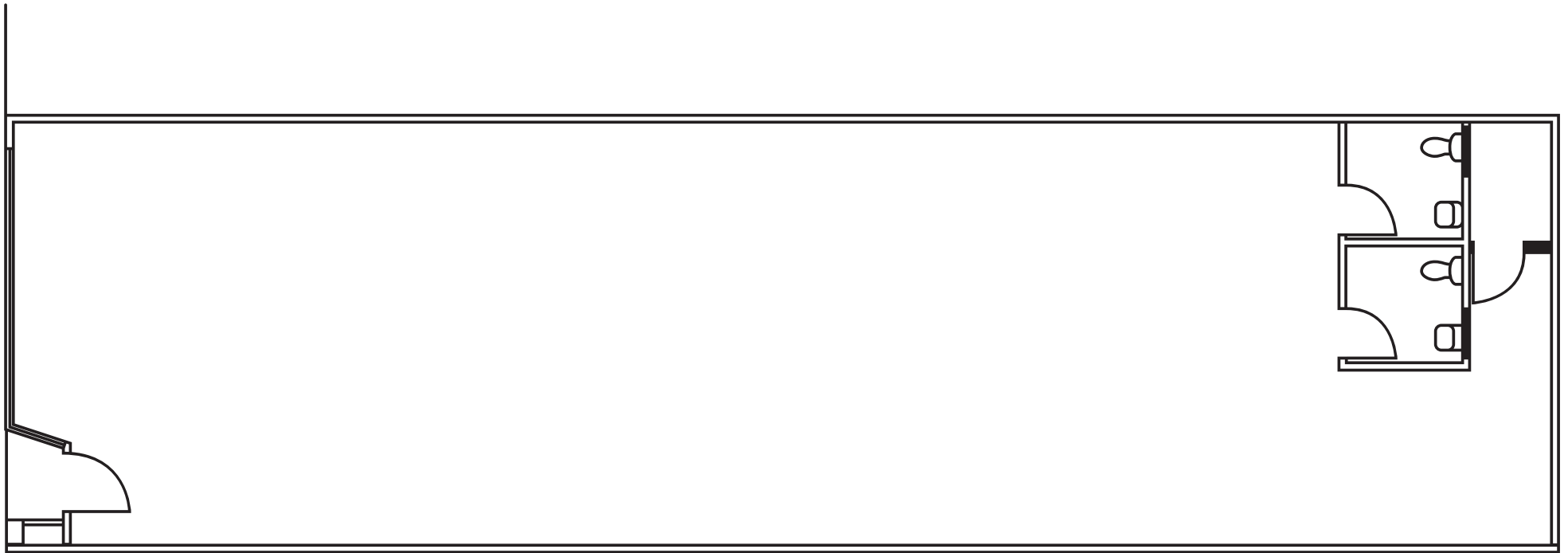


**BRAD EHIKIAN**  
Partner  
dre license #01736391  
☎ | 650.618.3001  
✉ | brad.ehikian@prprop.com

**JON GOLDMAN**  
Partner  
dre license #01295503  
☎ | 650.618.3003  
✉ | jon.goldman@prprop.com

**JESSE EBNER**  
Vice President  
dre license #02055989  
☎ | 650.618.3017  
✉ | jesse.ebner@prprop.com

# FLOOR PLAN



±2,400 SQ. FT. OFFICE

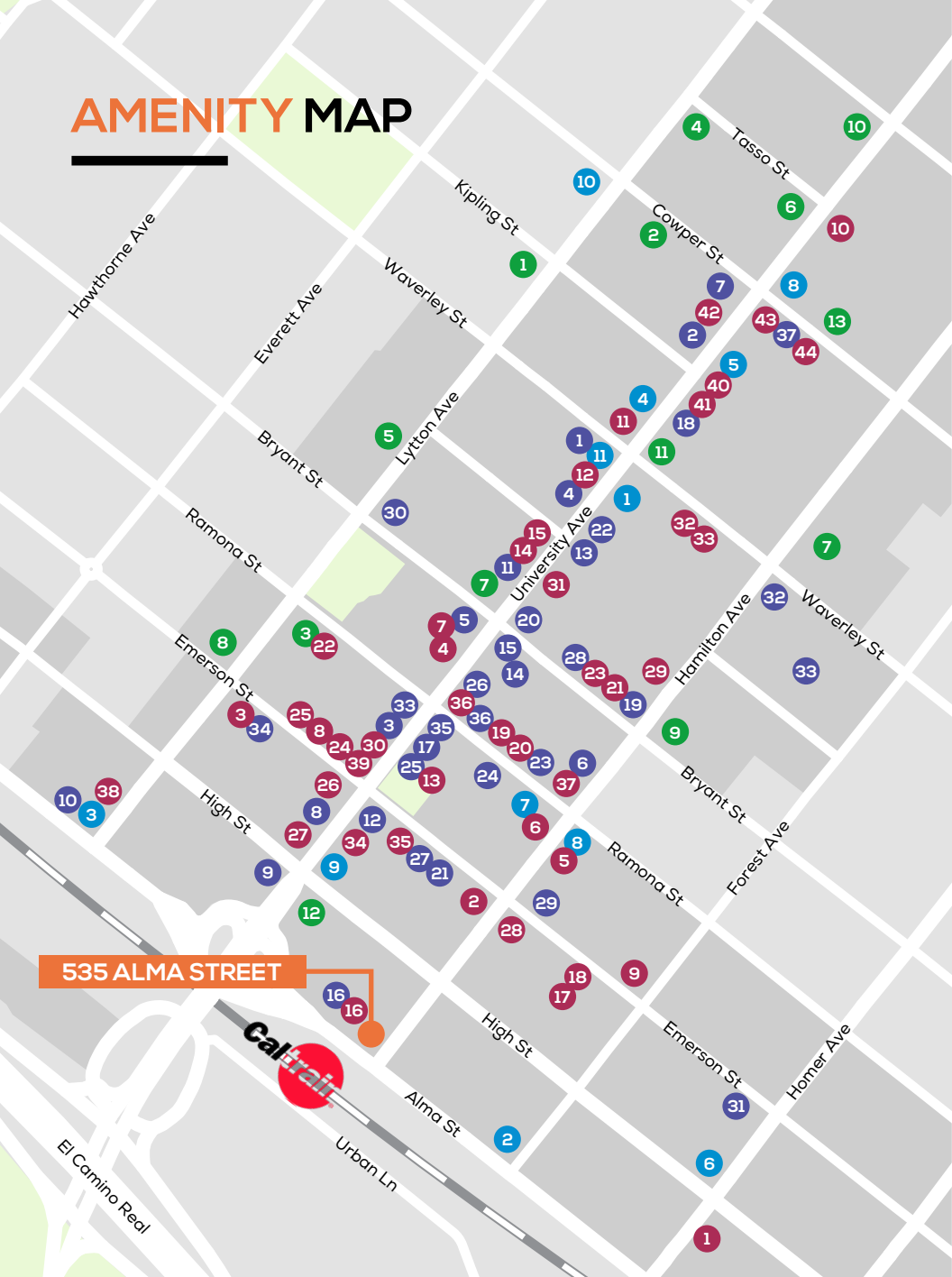


**BRAD EHIKIAN**  
Partner  
dre license #01736391  
📞 | 650.618.3001  
✉ | brad.ehikian@prprop.com

**JON GOLDMAN**  
Partner  
dre license #01295503  
📞 | 650.618.3003  
✉ | jon.goldman@prprop.com

**JESSE EBNER**  
Vice President  
dre license #02055989  
📞 | 650.618.3017  
✉ | jesse.ebner@prprop.com

# AMENITY MAP



## SHOPPING / SERVICES

- 1 B8ta Palo Alto
- 2 Footwear Etc
- 3 Verizon
- 4 Design Within Reach
- 5 Restoration Hardware
- 6 Shinola
- 7 Sprint Store
- 8 Palo Alto Bicycles
- 9 Natural Mattress Store
- 10 E-bike Annex
- 11 Rejuvenation
- 12 West Elm
- 13 Apple Store
- 14 Jos. A. Banks
- 15 Keen Garage
- 16 Patagonia
- 17 Vans
- 18 lululemon
- 19 UPS Store
- 20 Walgreens
- 21 Bells Books
- 22 CVS
- 23 Warby Parker
- 24 Good Vibrations
- 25 Nest Bedding
- 26 The Shade Store
- 27 Mac's Smoke Shop
- 28 Timothy Adams
- 29 Rumble Fitness
- 30 Form Fitness
- 31 Whole Foods
- 32 US Postal Service
- 33 Stanford Theatre
- 34 Aquarius Theatre
- 35 Juut Salon
- 36 Edge Hair Salon
- 37 Garden Court

## RESTAURANTS

- 1 Saint Michael Alley
- 2 Palo Alto Creamery
- 3 Evvia
- 4 Orens Hummus
- 5 Reposado
- 6 Osteria
- 7 Local Union
- 8 Rangoon Ruby
- 9 Pizza Delfina
- 10 Tamarine
- 11 Yayoi Palo Alto
- 12 Crepevine
- 13 Pizza My Heart
- 14 La Strada
- 15 Joya
- 16 Pampas
- 17 Tacolicious
- 18 Dan Gordon's
- 19 Nola
- 20 The Old Pro
- 21 Zola
- 22 Bird Dog
- 23 Ramen Nagi
- 24 Steam
- 25 Patxis
- 26 Wahlburgers
- 27 Lemonade
- 28 Nobu
- 29 Curry Up Now
- 30 Subway
- 31 SliderBar
- 32 Ethlys Fancy
- 33 Tai Pan
- 34 Sprout Café
- 35 Bare Bowls
- 36 Salt and Straw
- 37 sweetgreen
- 38 Darbar Indian Cuisine
- 39 Scoop
- 40 Sushirrito
- 41 Cream
- 42 Cielo
- 43 Gyros Gyros
- 44 Il Fornaio

## BANKS

- 1 Avid Bank
- 2 Boston Private
- 3 Comerica Bank
- 4 bank of america
- 5 Presidio Bank
- 6 Stanford Credit Union
- 7 Wells Fargo
- 8 City National Bank
- 9 Chase Bank
- 10 HSBC Bank
- 11 Union Bank
- 12 E\*TRADE Bank
- 13 Bank of The West

## COFFEE

- 1 Starbucks
- 2 Philz Coffee
- 3 Coupa Cafe
- 4 Café Venetia
- 5 Blue Bottle Café
- 6 Peets
- 7 Bistro Maxine
- 8 Joe & the Juice
- 9 Verve
- 10 Mademoiselle Colette
- 11 Paris Baguette



**PREMIER  
PROPERTIES**  
COMMERCIAL  
REAL ESTATE

### BRAD EHIKIAN

Partner  
dre license #01736391  
☎ | 650.618.3001  
✉ | brad.ehikian@prprop.com

### JON GOLDMAN

Partner  
dre license #01295503  
☎ | 650.618.3003  
✉ | jon.goldman@prprop.com

### JESSE EBNER

Vice President  
dre license #02055989  
☎ | 650.618.3017  
✉ | jesse.ebner@prprop.com

# TRANSPORTATION AERIAL



**BRAD EHIKIAN**  
 Partner  
 dre license #01736391  
 ☎ | 650.618.3001  
 ✉ | brad.ehikian@prprop.com

**JON GOLDMAN**  
 Partner  
 dre license #01295503  
 ☎ | 650.618.3003  
 ✉ | jon.goldman@prprop.com

**JESSE EBNER**  
 Vice President  
 dre license #02055989  
 ☎ | 650.618.3017  
 ✉ | jesse.ebner@prprop.com

# DEMOGRAPHICS



ONE-MILE POPULATION: 16,273

MEDIAN AGE

42.1

MEDIAN NET WORTH



FAMILIES



PER CAPITA  
INCOME

107,835



AVERAGE HOUSEHOLD INCOME

\$231,995

Average Household Size: 2.08

Owner Occupied Housing Units: 3,127

Renter Occupied Housing Units: 4,525

Median Household Income: \$173,486

## MAJOR EMPLOYERS:

Data for all businesses in area	1 mile
Total Businesses:	2,506
Total Employees:	33,924
Total Residential Population:	16,273
Employee/Residential Population Ratio (per 100 Residents)	208

Lucile Packard  
Children's Hospital  
Stanford  
VA PAHCS  
Veterans Affairs Palo Alto Health Care System

Stanford  
HEALTH CARE  
vmware®  
varian



Sutter Health  
Palo Alto Medical  
Foundation



**BRAD EHIKIAN**  
Partner  
dre license #01736391  
📞 | 650.618.3001  
✉ | brad.ehikian@prprop.com

**JON GOLDMAN**  
Partner  
dre license #01295503  
📞 | 650.618.3003  
✉ | jon.goldman@prprop.com

**JESSE EBNER**  
Vice President  
dre license #02055989  
📞 | 650.618.3017  
✉ | jesse.ebner@prprop.com

# CITY PARKING LOT MAP



**BRAD EHIKIAN**  
 Partner  
 dre license #01736391  
 ☎ | 650.618.3001  
 ✉ | brad.ehikian@prprop.com

**JON GOLDMAN**  
 Partner  
 dre license #01295503  
 ☎ | 650.618.3003  
 ✉ | jon.goldman@prprop.com

**JESSE EBNER**  
 Vice President  
 dre license #02055989  
 ☎ | 650.618.3017  
 ✉ | jesse.ebner@prprop.com