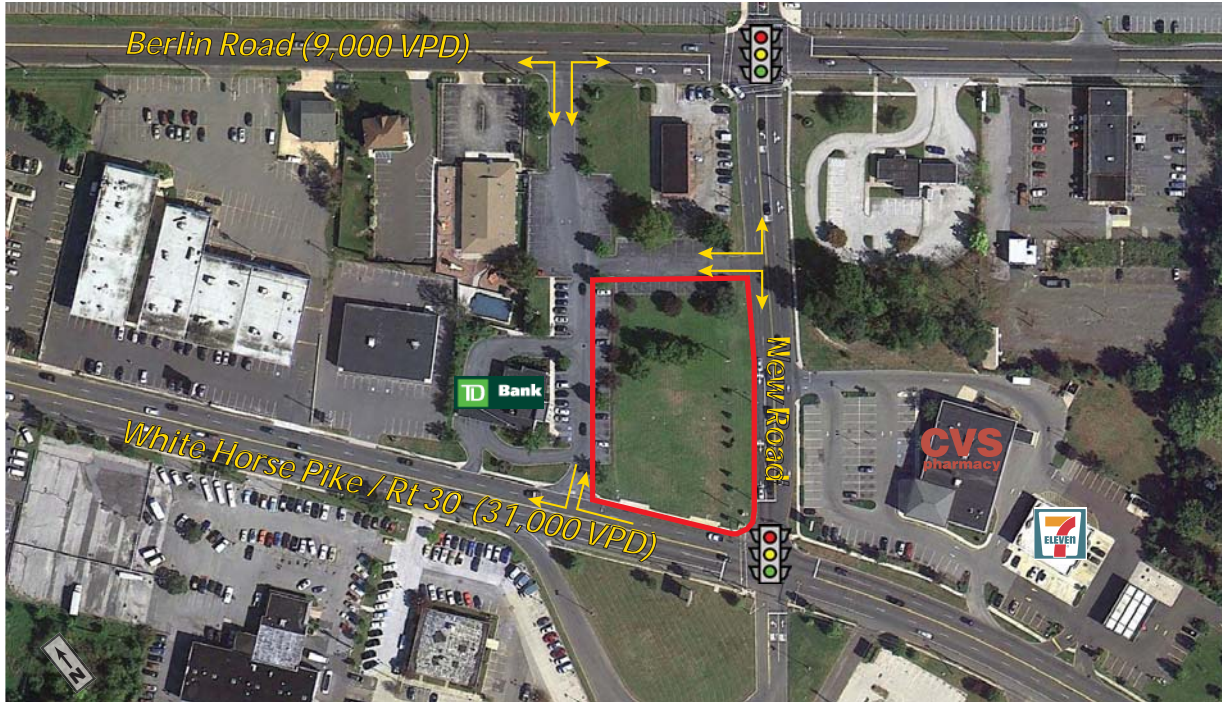


Camden County | New Jersey
COMMERCIAL LAND FOR SALE
 57 S. White Horse Pike | Stratford | 08084



PROPERTY HIGHLIGHTS

- 33,650 SF commercial land available for sale
- Approximate frontage of 145' with curb cuts along the White Horse Pike; additional curb cuts on New & Berlin Roads
- Situated in front of Lindenwold PATCO Station with ridership of 33,000 per day
- Zoned commercial with many retail permitted uses
- Excellent visibility and access
- Located in the center of the Lindenwold commercial "hub"
- Traffic counts of 31,000 VPD on White Horse Pike and 9,000 cars per day on Berlin Road
- Located close to Kennedy Health System



DEMOGRAPHICS (*)

	1 Mile	2 Miles	3 Miles
Population	10,914	49,234	89,766
Average HH Income	\$ 70,599	\$ 66,494	\$ 74,554
Total Businesses	548	1,885	3,179
Number of Employees	6,573	19,285	38,921

* Data Source: ESRI™

CONTACT:

Steve DePetris
 sdepetris@lpre.com
 856-231-1010



Member of:



T: 856-231-1010 | F: 856-231-1111 | LPRE.COM
 20000 Horizon Way • Suite 280 • Mount Laurel NJ 08054 | Web ID# 17436918

Camden County | New Jersey

COMMERCIAL LAND FOR SALE

57 S. White Horse Pike | Stratford | 08084

