



**FOR SALE /
LEASE**

Highmark Building

32200 WEYERHAEUSER WAY S, FEDERAL WAY, WA



NORTH ELEVATION



WEST ELEVATION



EAST ELEVATION

Office/Flex

47,800 square foot building

BUILD-TO SUITE up to 50% industrial
(light manufacturing or assemblage)

PERMIT ready

GREAT LOCATION 320th & I-5

EASY ACCESS to I-5

PARKING 167 stalls

MARK CLIREHUGH, SIOR, CCIM

253.722.1416

mark.clirehugh@kidder.com

WILL FRAME

253.722.1412

will.frame@kidder.com

DREW FRAME

253.722.1433

drew.frame@kidder.com

KIDDER.COM

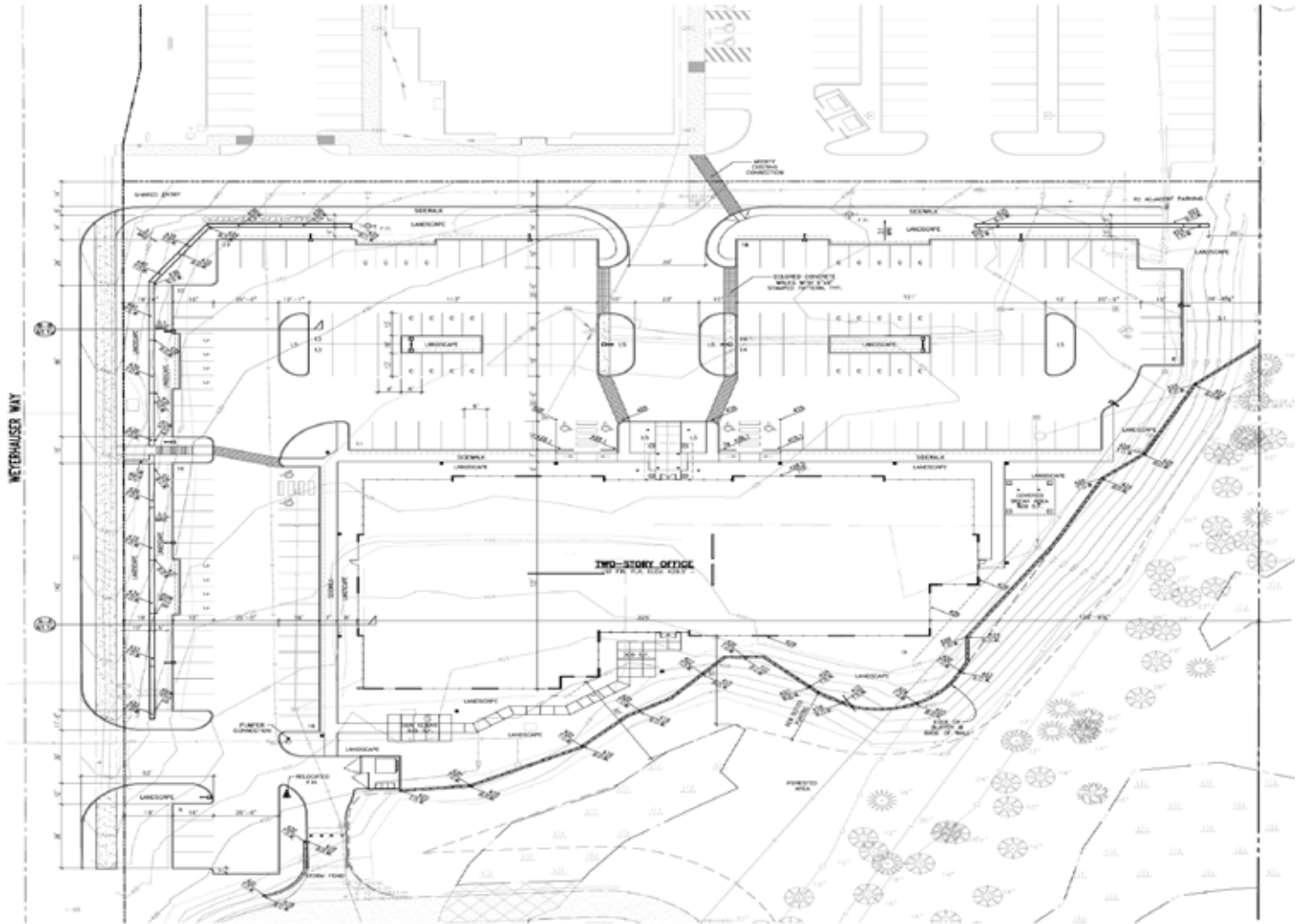
This information supplied herein is from sources we deem reliable. It is provided without any representation, warranty, or guarantee, expressed or implied as to its accuracy. Prospective Buyer or Tenant should conduct an independent investigation and verification of all matters deemed to be material, including, but not limited to, statements of income and expenses. Consult your attorney, accountant, or other professional advisor.

**Kidder
Mathews**

FOR SALE / LEASE

Highmark Building

3200 WEYERHAEUSER WAY S, FEDERAL WAY, WA



 SITE PLAN
0 10 20 30

MARK CLIREHUGH, SIOR, CCIM

253.722.1416

mark.clirehugh@kidder.com

WILL FRAME

253.722.1412

will.frame@kidder.com

DREW FRAME

253.722.1433

drew.frame@kidder.com

KIDDER.COM

This information supplied herein is from sources we deem reliable. It is provided without any representation, warranty, or guarantee, expressed or implied as to its accuracy. Prospective Buyer or Tenant should conduct an independent investigation and verification of all matters deemed to be material, including, but not limited to, statements of income and expenses. Consult your attorney, accountant, or other professional advisor.



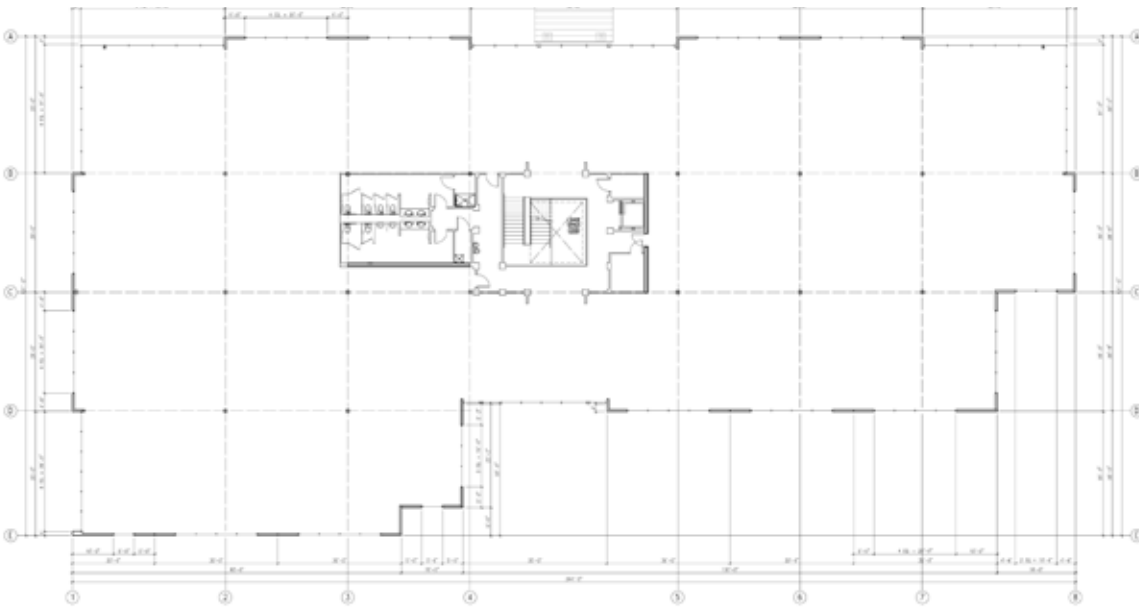
FOR SALE / LEASE

Highmark Building

3200 WEYERHAEUSER WAY S, FEDERAL WAY, WA



FIRST FLOOR PLAN



SECOND FLOOR PLAN

MARK CLIREHUGH, SIOR, CCIM

253.722.1416

mark.clirehugh@kidder.com

WILL FRAME

253.722.1412

will.frame@kidder.com

DREW FRAME

253.722.1433

drew.frame@kidder.com

KIDDER.COM

This information supplied herein is from sources we deem reliable. It is provided without any representation, warranty, or guarantee, expressed or implied as to its accuracy. Prospective Buyer or Tenant should conduct an independent investigation and verification of all matters deemed to be material, including, but not limited to, statements of income and expenses. Consult your attorney, accountant, or other professional advisor.

