

2111 N. SQUIRREL ROAD
AUBURN HILLS, MICHIGAN

RETAIL FOR LEASE
1,500 – 19,324 Square Feet Available



**SIGNATURE
ASSOCIATES**
KNOW SIGNATURE | KNOW RESULTS

NEW MIXED-USE DEVELOPMENT



PROPERTY FEATURES

- 1,500 - 19,324 available square feet
- Second story signage available
- Zoned B-2
- 165+ parking spaces
- Construction to be completed in Fall 2024
- Lease Rate: Contact Broker

Comments: New mixed-use development directly across from Oakland University. Excellent trade area with strong demographics and traffic counts with easy access to I-75. Shared parking with adjacent parcels.



For more information, please contact:

PETER VANDERKAAY
(248) 359 3837
pvanderkaay@signatureassociates.com

BRUCE D. BAJA
(248) 799 3177
bbaja@signatureassociates.com

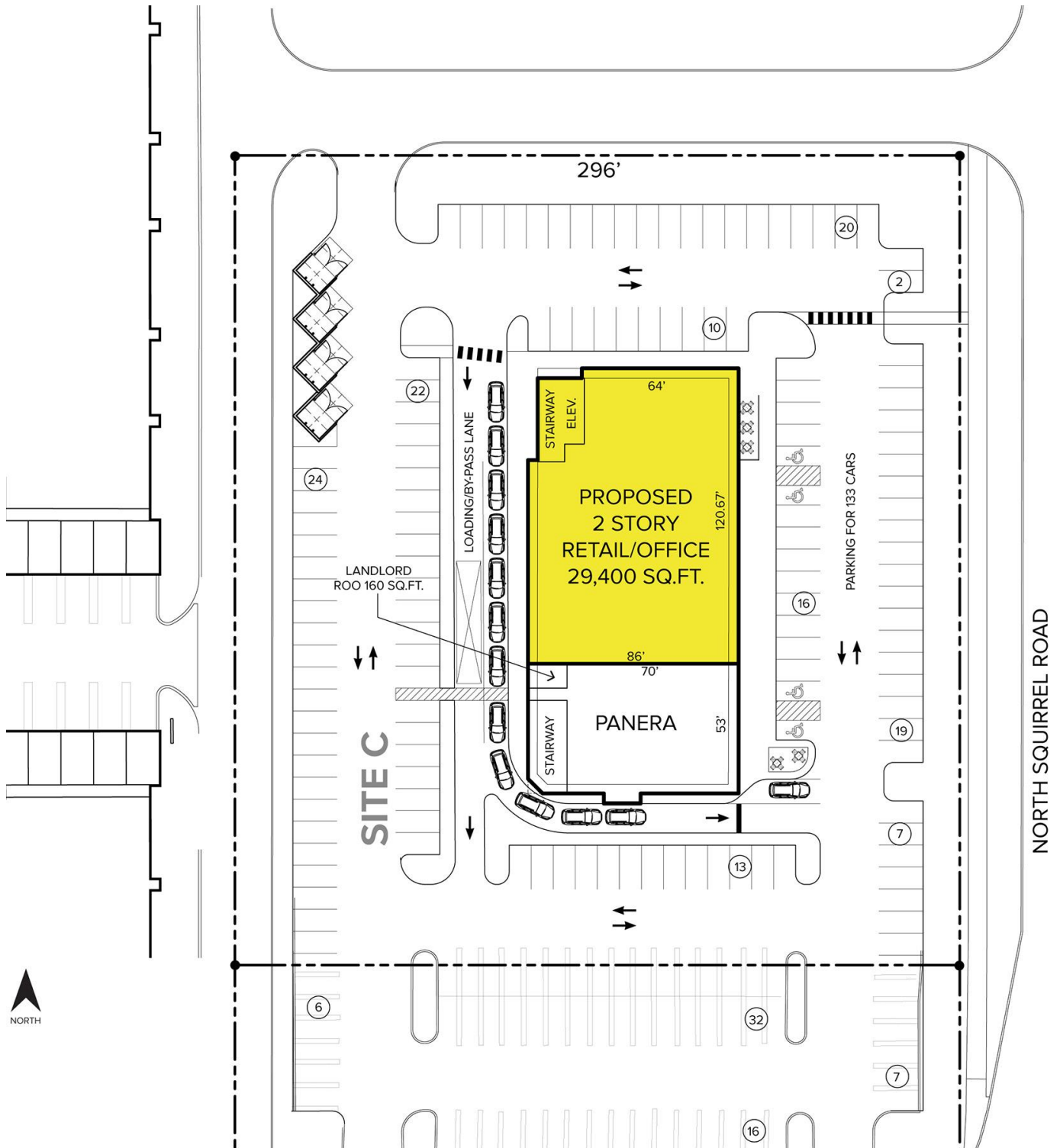
SIGNATURE ASSOCIATES
One Towne Square, Suite 1200
Southfield, MI 48076
www.signatureassociates.com

2111 N. Squirrel Road – Auburn Hills, Michigan

Retail For Lease

1,500-19,324
Square Feet
AVAILABLE

Site Plan



For more information, please contact:

PETER VANDERKAAY
(248) 359 3837
pvanderkaay@signatureassociates.com

BRUCE D. BAJA
(248) 799 3177
bbaja@signatureassociates.com

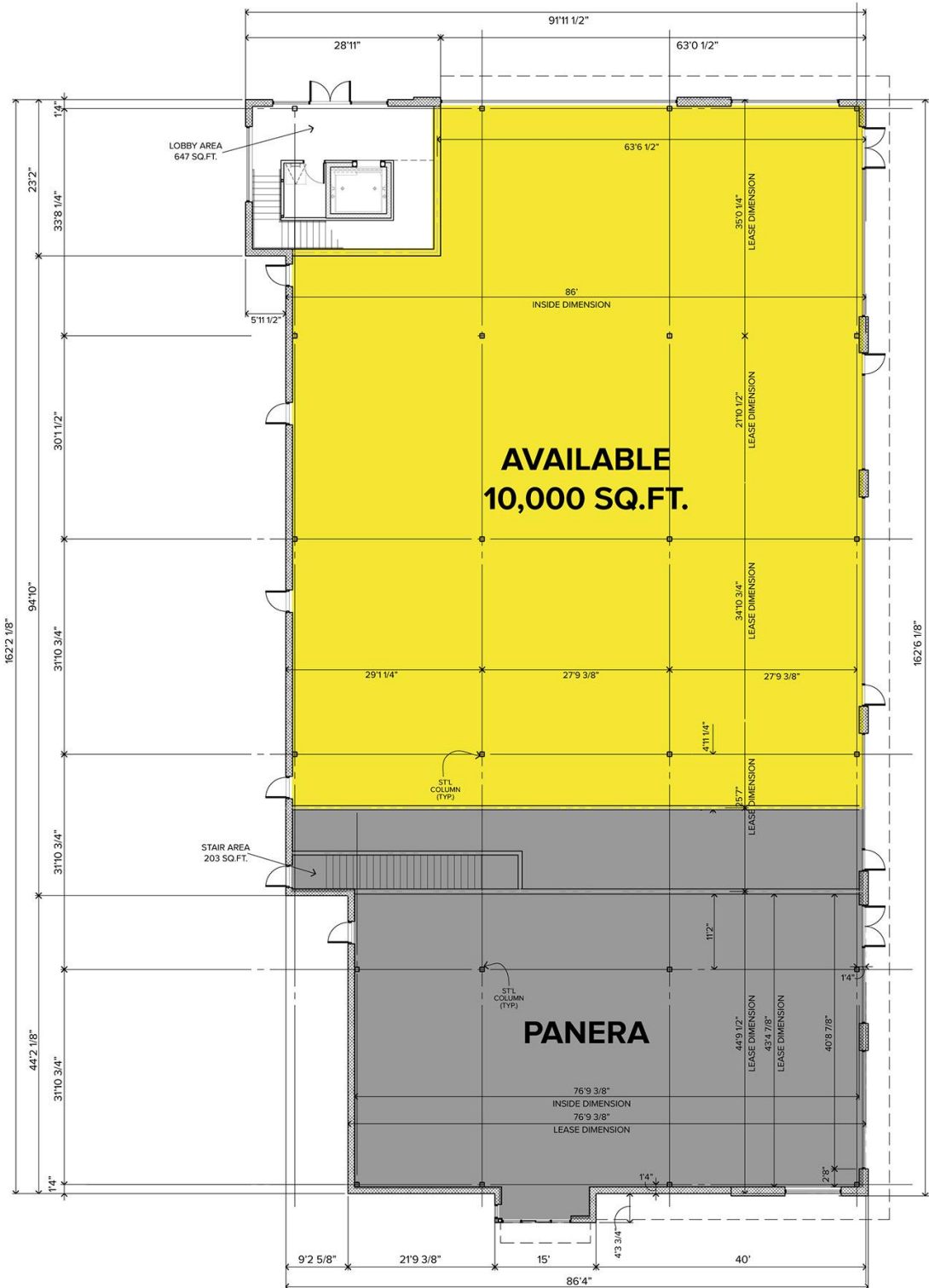
SIGNATURE ASSOCIATES
One Towne Square, Suite 1200
Southfield, MI 48076
www.signatureassociates.com

2111 N. Squirrel Road – Auburn Hills, Michigan

Retail For Lease

1,500-19,324
Square Feet
AVAILABLE

Proposed First Floor Retail Space



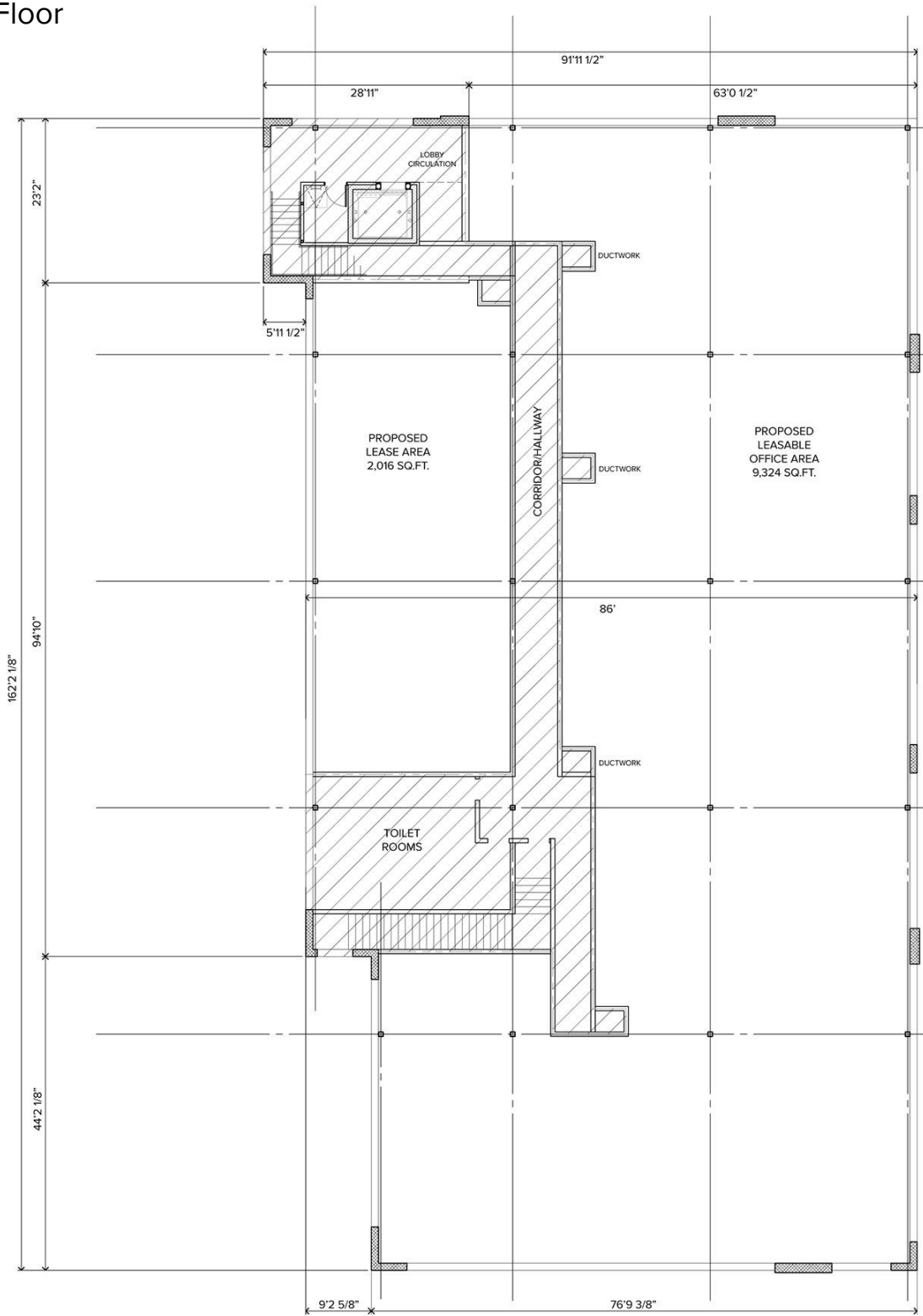
For more information, please contact:

PETER VANDERKAAY
(248) 359 3837
pvanderkaay@signatureassociates.com

BRUCE D. BAJA
(248) 799 3177
bbaja@signatureassociates.com

SIGNATURE ASSOCIATES
One Towne Square, Suite 1200
Southfield, MI 48076
www.signatureassociates.com

Proposed Second Floor
Office Space



© SIGNATURE ASSOCIATES

For more information, please contact:

PETER VANDERKAAY
(248) 359 3837
pvanderkaay@signatureassociates.com

BRUCE D. BAJA
(248) 799 3177
bbaja@signatureassociates.com

SIGNATURE ASSOCIATES
One Towne Square, Suite 1200
Southfield, MI 48076
www.signatureassociates.com