

23908 MICHIGAN AVENUE
DEARBORN, MICHIGAN

OFFICE FOR LEASE
1,400 Square Feet Available



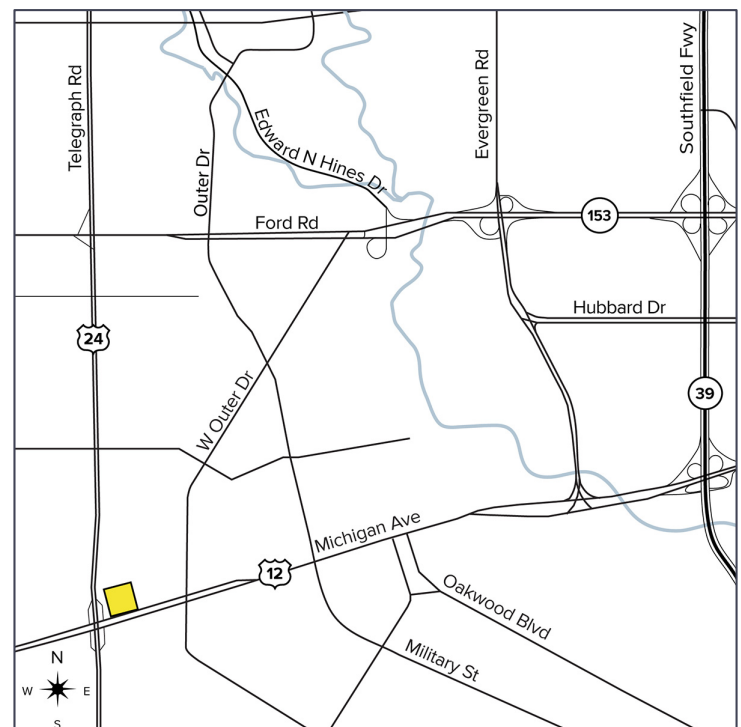
**SIGNATURE
ASSOCIATES**
KNOW SIGNATURE | KNOW RESULTS

GREAT LOCATION



PROPERTY FEATURES

- 1,400 square feet available
- Retrofit in 2019
- Great space on Michigan Avenue
- Ideal for professional office, small medical, or retail
- Access to a large municipal parking lot adjacent to premises
- Lease Rate: \$19.50/sq.ft. Gross



For more information, please contact:

BRUCE D. BAJA
(248) 799 3177
bbaja@signatureassociates.com

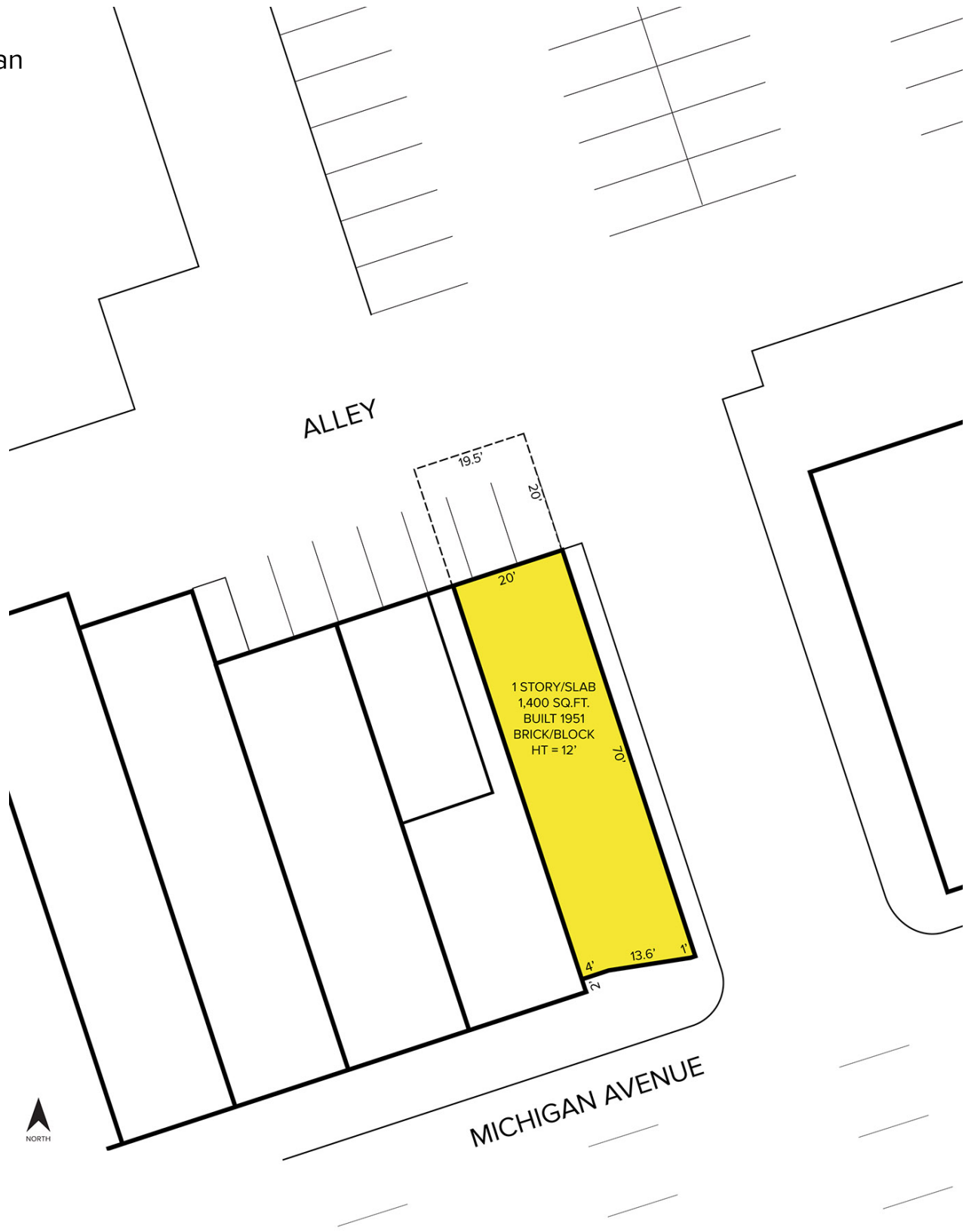
SIGNATURE ASSOCIATES
One Towne Square, Suite 1200
Southfield, MI 48076
www.signatureassociates.com

23908 Michigan Avenue – Dearborn, Michigan

Office For Lease

1,400
Square Feet
AVAILABLE

Site Plan



For more information, please contact:

BRUCE D. BAJA
(248) 799 3177
bbaja@signatureassociates.com

SIGNATURE ASSOCIATES
One Towne Square, Suite 1200
Southfield, MI 48076
www.signatureassociates.com

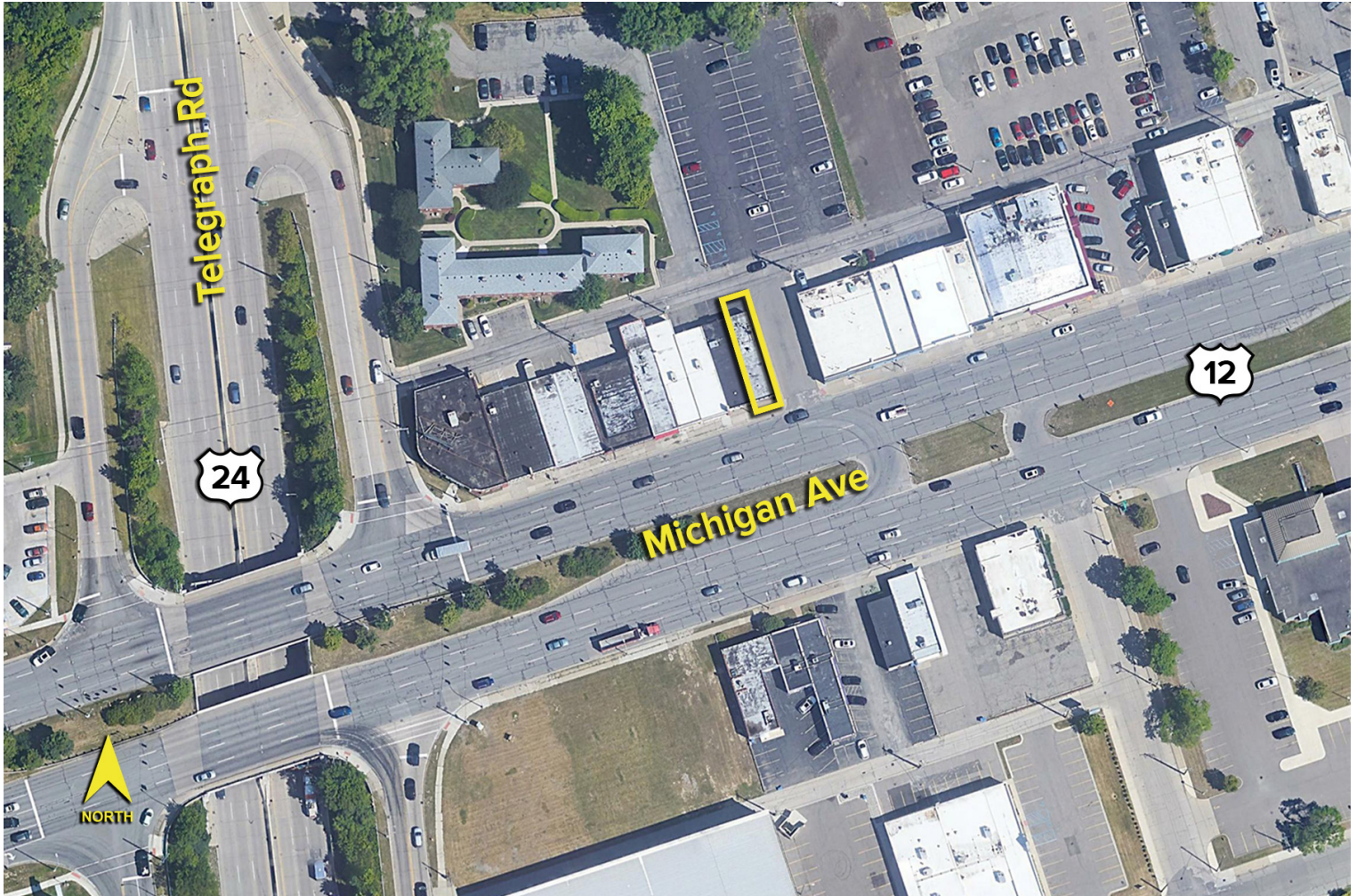
Information is subject to verification and no liability for errors or omissions is assumed. Price is subject to change and listing withdrawal.

23908 Michigan Avenue – Dearborn, Michigan

Office For Lease

1,400
Square Feet
AVAILABLE

Aerial



For more information, please contact:

BRUCE D. BAJA
(248) 799 3177
bbaja@signatureassociates.com

SIGNATURE ASSOCIATES
One Towne Square, Suite 1200
Southfield, MI 48076
www.signatureassociates.com

Information is subject to verification and no liability for errors or omissions is assumed. Price is subject to change and listing withdrawal.