

Prime Retail Available

Your Name Here

1240 Willow Pass Rd

Concord, CA

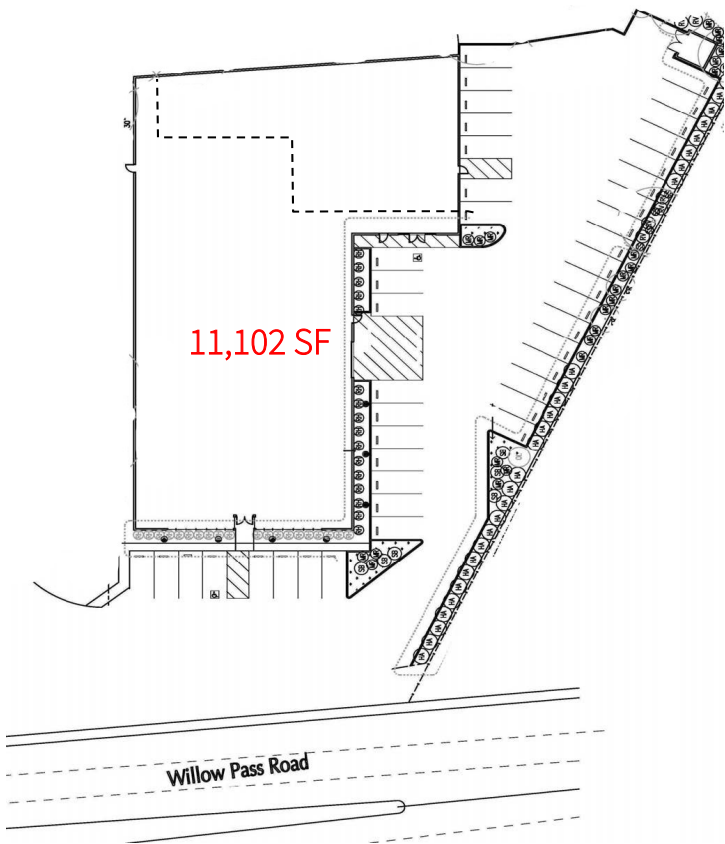
Jeff Badstubner
Senior Vice President
415.395.4900
jeff.badstubner@am.jll.com
RE# 01155279

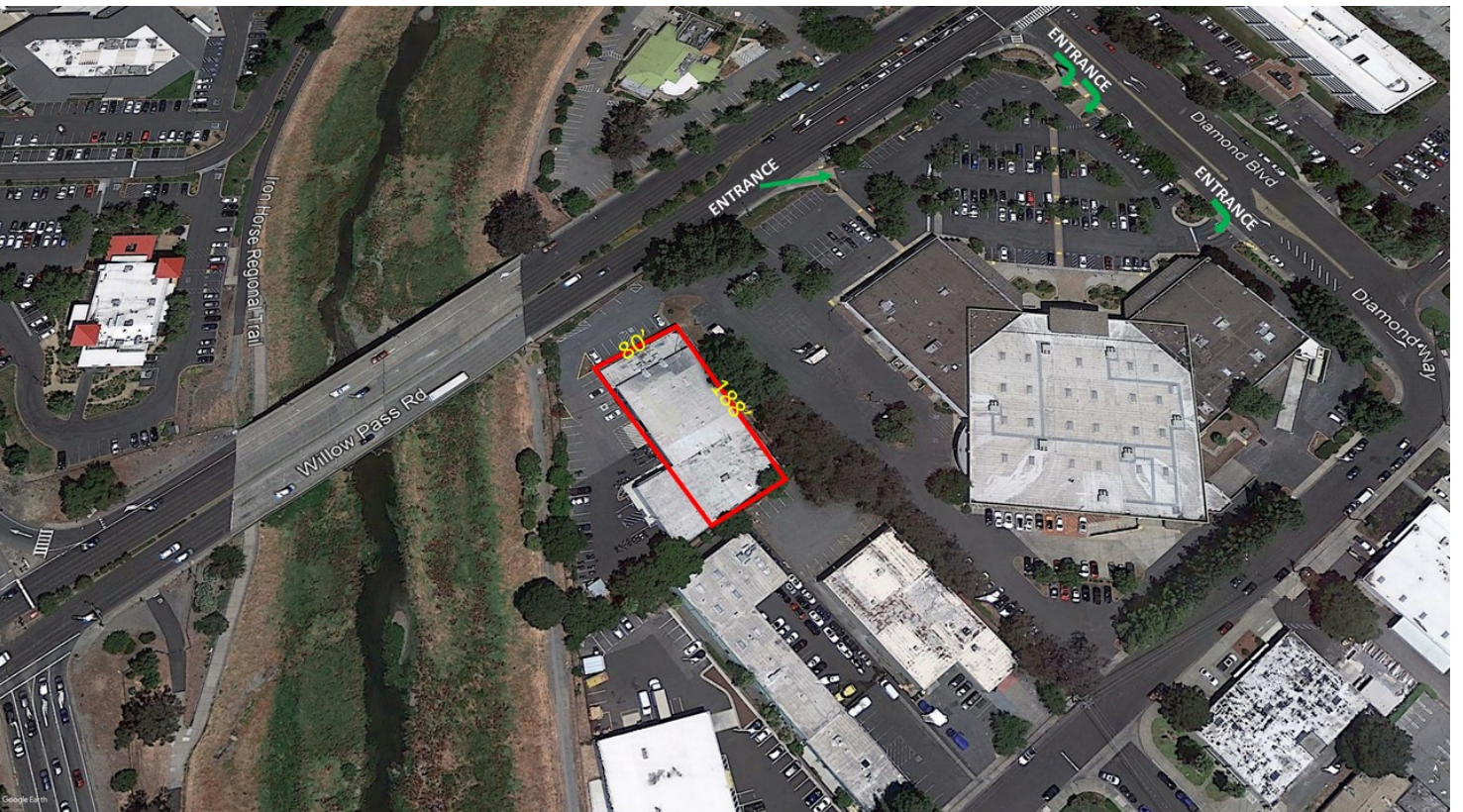
Ben Lazzareschi
Executive Vice President
415.228.3070
ben.lazzareschi@am.jll.com
RE# 01414579



- 11,102 SF Available
- Co-tenant is BMW Motorcycles
- 15' Clear Height
- Roll Up Door Access

Area profile	0.5-Mile	1-Mile	3-Mile
Est. Population	1,989	21,890	150,206
Est. Daytime Population	5,319	26,178	149,796
Avg. Household Income	\$90,418	\$63,314	\$92,593







Jeff Badstubner
Senior Vice President
415.395.4900
jeff.badstubner@am.jll.com
RE# 01155279

Ben Lazzareschi
Executive Vice President
415.228.3070
ben.lazzareschi@am.jll.com
RE# 01414579

jllretail.com