

FOR LEASE | RETAIL/OFFICE SPACE

JAMESON.

799 CENTRAL AVENUE, HIGHLAND PARK

LEASE OVERVIEW

LEASE PRICE: OFFICE: \$29.00/SF/MG RETAIL: \$14.00-\$20.00/SF/NNN

BUILDING CLASS: A

SUITE SIZE: 1,614- 7,327 SF

YEAR BUILT: 2003

AVAILABILITY: 45 days

MARKET: Central North

CROSS STREETS: Central Avenue/Green Bay Road



AREA HIGHLIGHTS

- Walk to downtown Highland Park.
- Walk to Metra station.
- 1/4 mile to Skokie Highway.
- Beautiful Highland Park!

AREA TENANTS

- Equinox Fitness
- Walker Brothers
- Fifth Third Bank
- Pancake House
- Starbucks
- Sunset Foods
- Jimmy Johns
- Once Upon a Bagel

TRANSPORTATION HIGHLIGHTS

- Walk to Metra station
- 1/4 mile from Skokie Highway (Rte. 41)
- Reserved parking.

RETAIL HIGHLIGHTS

20 treatments rooms. Lobby/Reception. Natural light!!!
Storefront Retail- 3,375 square feet near Equinox. Staff lounge. Divisible.

View Suite 300: <https://my.matterport.com/show/?m=kwy2HY7Y1J5>

View Suite 301: <https://my.matterport.com/show/?m=Ma1okT5GGy5>

View Suite 280: <https://my.matterport.com/show/?m=43a2n3k8nVC>

OFFICE HIGHLIGHTS

- Two Office Suites available
- 10 executive offices with large windows
- Conference Room
- Private balcony
- Reserved parking
- Kitchen
- Copy/File work room
- Signage opportunity
- Furniture available

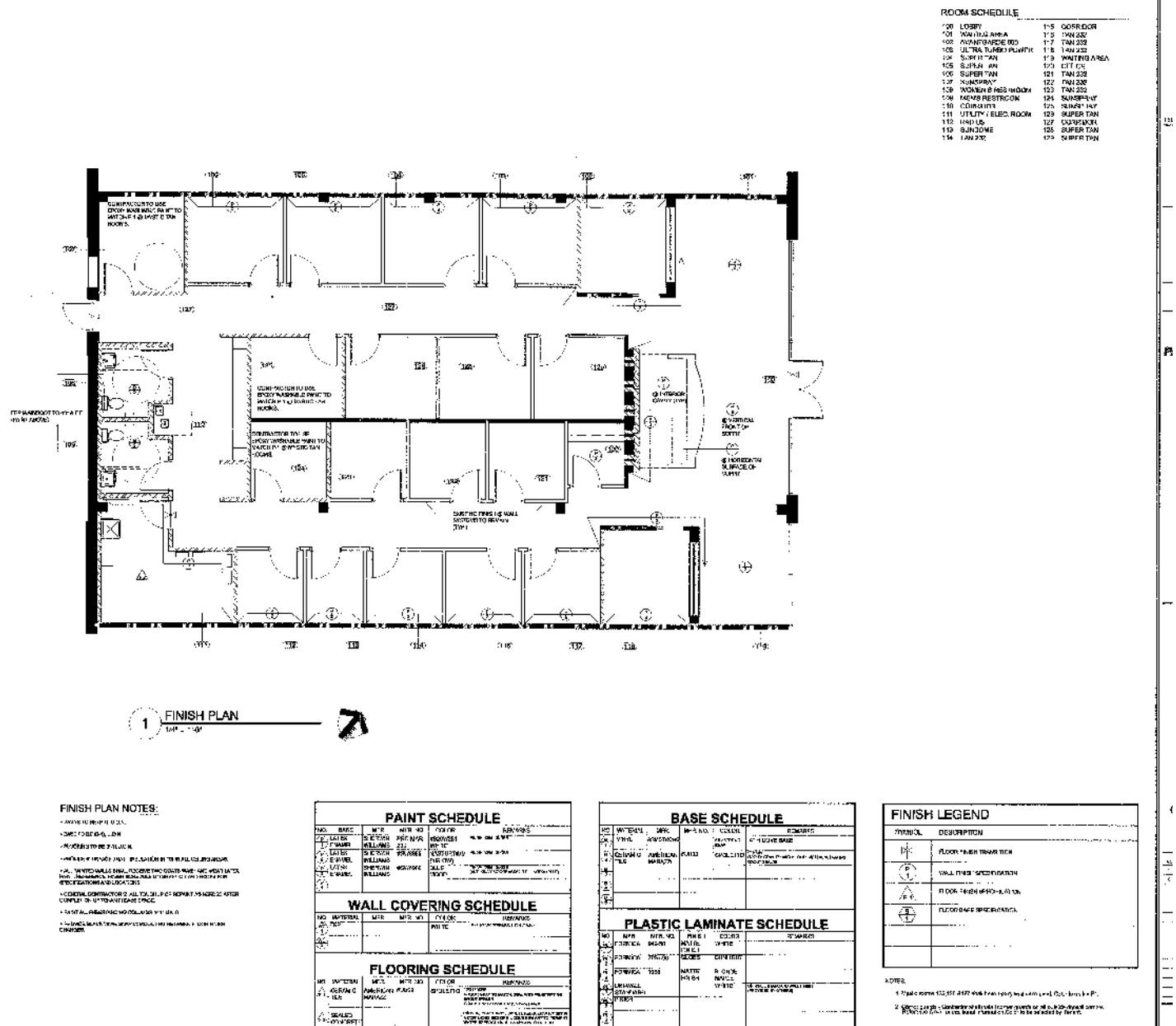
STEVEN GOLDSTEIN

Senior Vice President
(P) 312.840.9002
steve@chicagobroker.com

BRENT BURDEN, CCIM

Senior Vice President
(P) 312.929.1597
bburden@jameson.com

FLOOR PLAN



JAMESON COMMERCIAL REAL ESTATE
425 West North Avenue | Chicago, IL 60610
jamesoncommercial.com

©Jameson Real Estate LLC. All information provided herein is from sources deemed reliable. No representation is made as to the accuracy thereof & it is submitted subject to errors, omissions, changes, prior sale or lease, or withdrawal without notice. Projections, opinions, assumptions & estimates are presented as examples only & may not represent actual performance. Consult tax & legal advisors to perform your own investigation.

STEVEN GOLDSTEIN
Senior Vice President
(P) 312.840.9002
eve@chicagobroker.com

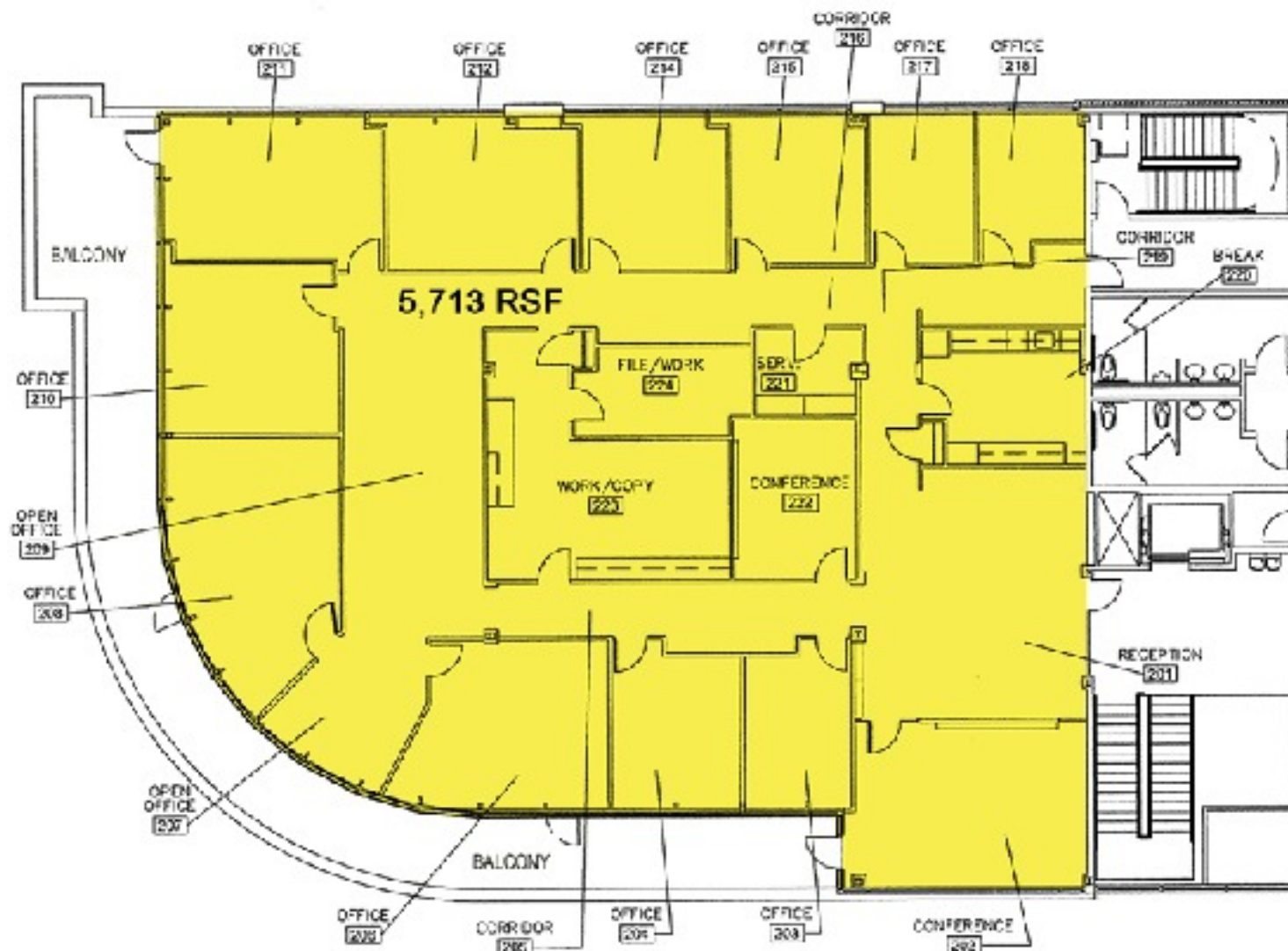
BRENT BURDEN, CCIM
Senior Vice President
(P) 312.929.1597
bburden@jameson.com

SUITE 300: 5,713 SF AVAILABLE 45 DAYS (OFFICE)

799 CENTRAL AVENUE

CENTRAL NORTH, HIGHLAND PARK, IL 60035

FLOOR PLAN



JAMESON COMMERCIAL REAL ESTATE

425 West North Avenue | Chicago, IL 60610

jamesoncommercial.com

STEVEN GOLDSTEIN

Senior Vice President

(P) 312.840.9002

steve@chicagobroker.com

BRENT BURDEN, CCIM

Senior Vice President

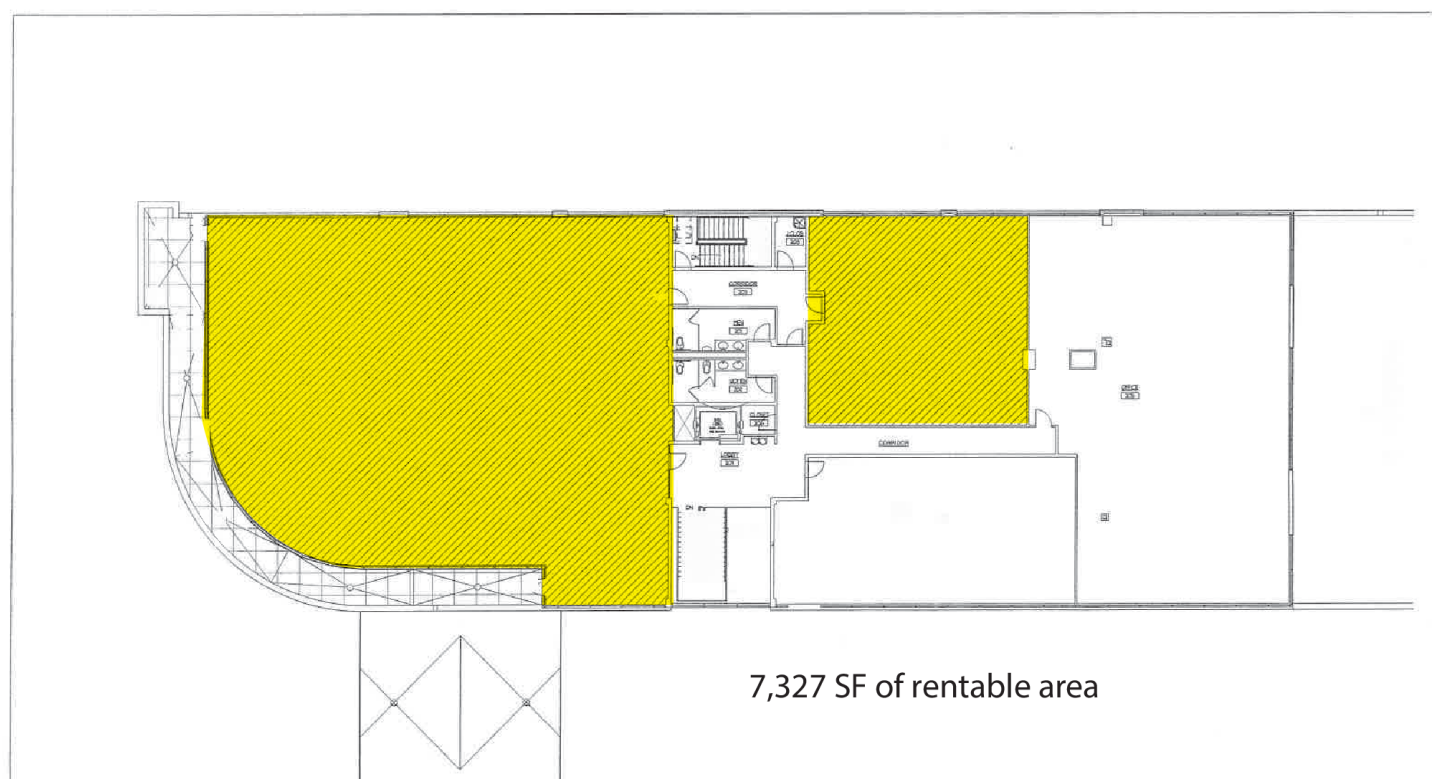
(P) 312.929.1597

bburden@jameson.com

7,327 SQUARE FEET: 1,614 SF AVAILABLE 1/1/2020 (OFFICE)

799 CENTRAL AVENUE

CENTRAL NORTH, HIGHLAND PARK, IL 60035

FLOOR PLAN**JAMESON COMMERCIAL REAL ESTATE**

425 West North Avenue | Chicago, IL 60610

jamesoncommercial.com

©Jameson Real Estate LLC. All information provided herein is from sources deemed reliable. No representation is made as to the accuracy thereof & it is submitted subject to errors, omissions, changes, prior sale or lease, or withdrawal without notice. Projections, opinions, assumptions & estimates are presented as examples only & may not represent actual performance. Consult tax & legal advisors to perform your own investigation.

STEVEN GOLDSTEIN

Senior Vice President

(P) 312.840.9002

steve@chicagobroker.com

BRENT BURDEN, CCIM

Senior Vice President

(P) 312.929.1597

bburden@jameson.com

FOR LEASE | RETAIL

JAMESON.

799 CENTRAL AVENUE



INTERIOR PHOTOS: OFFICE SPACE

799 CENTRAL AVENUE

CENTRAL NORTH, HIGHLAND PARK, IL 60035

JAMESON.



JAMESON COMMERCIAL REAL ESTATE

425 West North Avenue | Chicago, IL 60610

jamesoncommercial.com

©Jameson Real Estate LLC. All information provided herein is from sources deemed reliable. No representation is made as to the accuracy thereof & it is submitted subject to errors, omissions, changes, prior sale or lease, or withdrawal without notice. Projections, opinions, assumptions & estimates are presented as examples only & may not represent actual performance. Consult tax & legal advisors to perform your own investigation.

STEVEN GOLDSTEIN

Senior Vice President

(P) 312.840.9002

steve@chicagobroker.com

BRENT BURDEN, CCIM

Senior Vice President

(P) 312.929.1597

bburden@jameson.com

FOR LEASE | RETAIL/OFFICE

JAMESON.

799 CENTRAL AVENUE, HIGHLAND PARK



ADDITIONAL PHOTOS (OFFICE)

799 CENTRAL AVENUE
CENTRAL NORTH, HIGHLAND PARK, IL 60035

JAMESON.



JAMESON COMMERCIAL REAL ESTATE
425 West North Avenue | Chicago, IL 60610
jamesoncommercial.com

©Jameson Real Estate LLC. All information provided herein is from sources deemed reliable. No representation is made as to the accuracy thereof & it is submitted subject to errors, omissions, changes, prior sale or lease, or withdrawal without notice. Projections, opinions, assumptions & estimates are presented as examples only & may not represent actual performance. Consult tax & legal advisors to perform your own investigation.

STEVEN GOLDSTEIN
Senior Vice President
(P) 312.840.9002
steve@chicagobroker.com

BRENT BURDEN, CCIM
Senior Vice President
(P) 312.929.1597
bburden@jameson.com

RETAILER MAP

799 CENTRAL AVENUE
CENTRAL NORTH, HIGHLAND PARK, IL 60035

JAMESON.



JAMESON COMMERCIAL REAL ESTATE
425 West North Avenue | Chicago, IL 60610
jamesoncommercial.com

©Jameson Real Estate LLC. All information provided herein is from sources deemed reliable. No representation is made as to the accuracy thereof & it is submitted subject to errors, omissions, changes, prior sale or lease, or withdrawal without notice. Projections, opinions, assumptions & estimates are presented as examples only & may not represent actual performance. Consult tax & legal advisors to perform your own investigation.

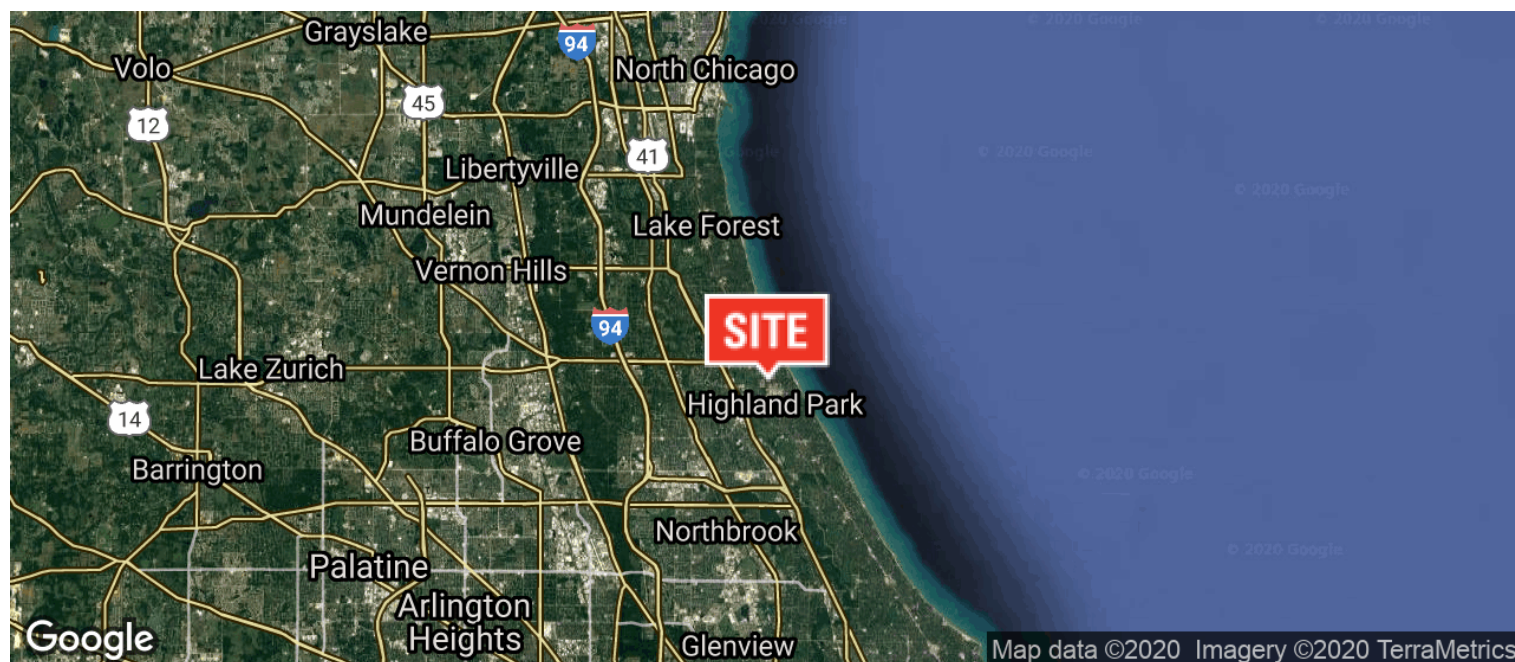
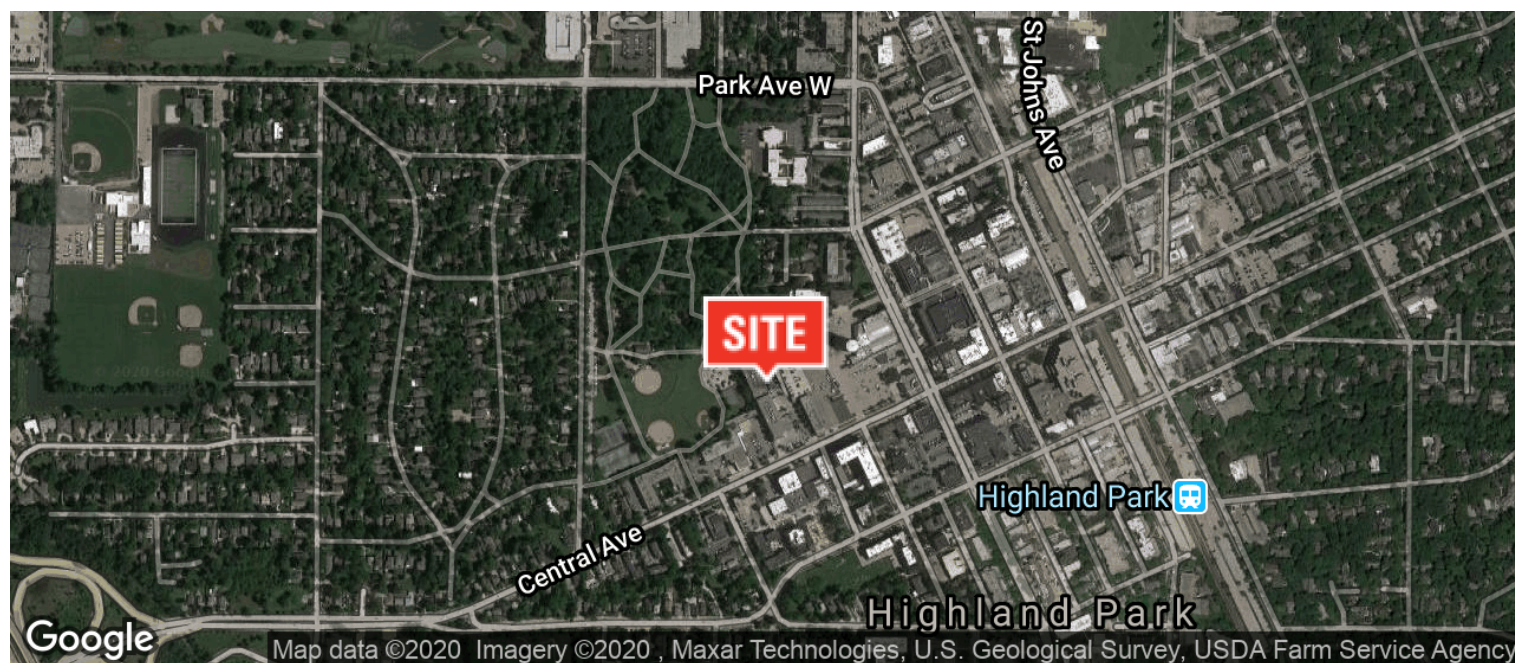
STEVEN GOLDSTEIN
Senior Vice President
(P) 312.840.9002
steve@chicagobroker.com

BRENT BURDEN, CCIM
Senior Vice President
(P) 312.929.1597
bburden@jameson.com

AERIAL & STREET DETAIL

799 CENTRAL AVENUE

CENTRAL NORTH, HIGHLAND PARK, IL 60035

**JAMESON COMMERCIAL REAL ESTATE**

425 West North Avenue | Chicago, IL 60610

jamesoncommercial.com

©Jameson Real Estate LLC. All information provided herein is from sources deemed reliable. No representation is made as to the accuracy thereof & it is submitted subject to errors, omissions, changes, prior sale or lease, or withdrawal without notice. Projections, opinions, assumptions & estimates are presented as examples only & may not represent actual performance. Consult tax & legal advisors to perform your own investigation.

STEVEN GOLDSTEIN

Senior Vice President

(P) 312.840.9002

steve@chicagobroker.com

BRENT BURDEN, CCIM

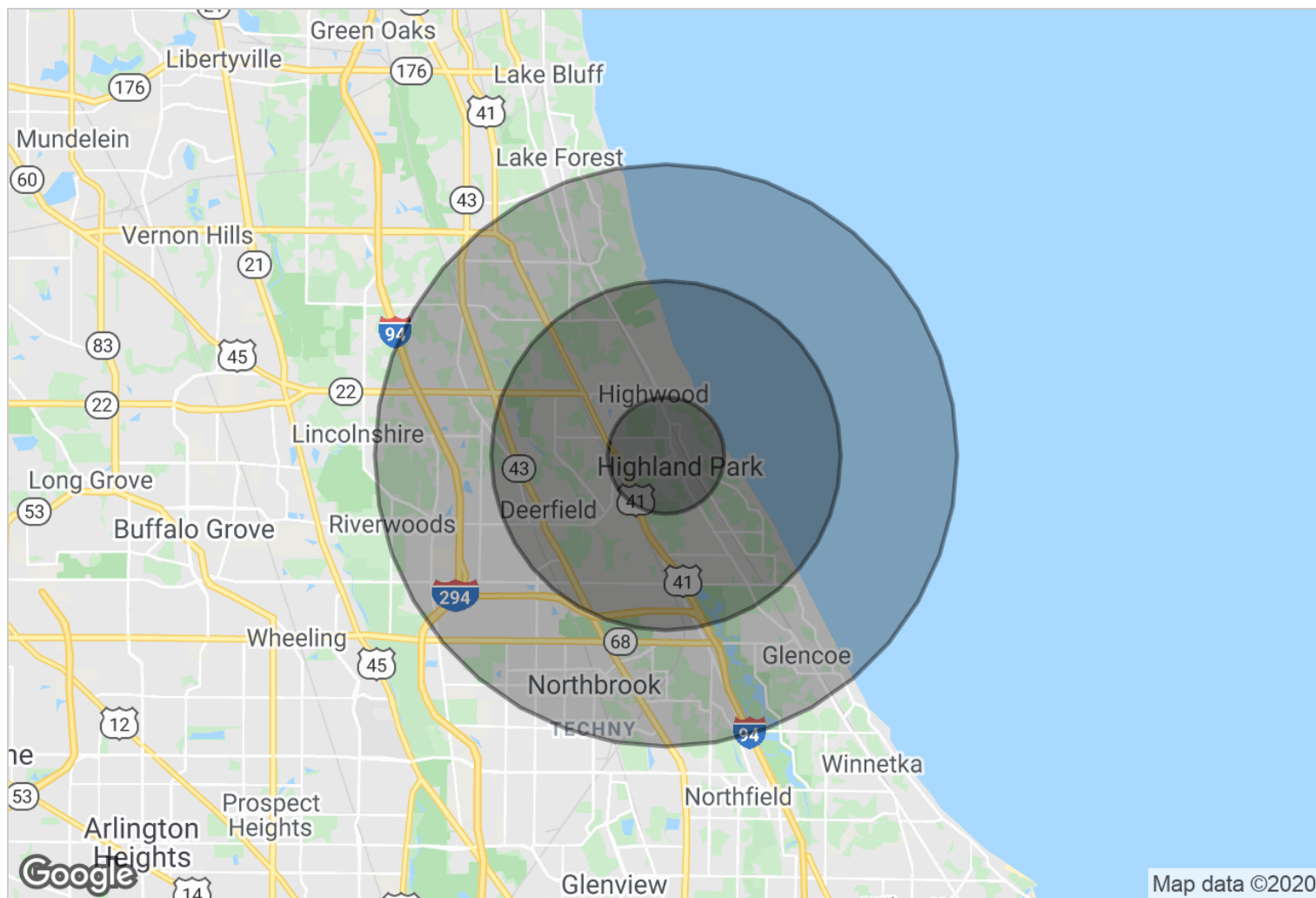
Senior Vice President

(P) 312.929.1597

bburden@jameson.com

DEMOGRAPHICS MAP

799 CENTRAL AVENUE
CENTRAL NORTH, HIGHLAND PARK, IL 60035



2010 STATISTICS	1 Mile	3 Miles	5 Miles
Total Population	7,855	52,661	112,097
Total Number of Households	3,209	19,672	40,491
Average Household Income	\$140,477	\$159,656	\$179,117
Median Age	44.0	43.7	43.3

JAMESON COMMERCIAL REAL ESTATE

425 West North Avenue | Chicago, IL 60610
jamesoncommercial.com

STEVEN GOLDSTEIN

Senior Vice President
(P) 312.840.9002
steve@chicagobroker.com

BRENT BURDEN, CCIM

Senior Vice President
(P) 312.929.1597
bburden@jameson.com

DEMOGRAPHICS REPORT

799 CENTRAL AVENUE
CENTRAL NORTH, HIGHLAND PARK, IL 60035

JAMESON.

DEMOGRAPHICS	1 Mile	3 Miles	5 Miles
TOTAL POPULATION	7,855	52,661	112,097
MEDIAN AGE	44.0	43.7	43.3
MEDIAN AGE (MALE)	44.0	43.6	42.3
MEDIAN AGE (FEMALE)	44.1	44.2	44.0

TOTAL HOUSEHOLDS	1 Mile	3 Miles	5 Miles
TOTAL HOUSEHOLDS	3,209	19,672	40,491
# OF PERSONS PER HH	2.4	2.7	2.8
AVERAGE HH INCOME	\$140,477	\$159,656	\$179,117
AVERAGE HOUSE VALUE	\$550,444	\$591,289	\$662,029

POPULATION	1 Mile	3 Miles	5 Miles
TOTAL POPULATION - White	7,069	47,349	101,380
TOTAL POPULATION - Black	86	569	1,080
TOTAL POPULATION - Hispanic	661	5,826	7,647
TOTAL POPULATION - Asian	228	1,401	5,257
TOTAL POPULATION - Hawaiian	49	87	99
TOTAL POPULATION - Indian	0	0	15
TOTAL POPULATION - Other	324	2,594	3,000

JAMESON COMMERCIAL REAL ESTATE
425 West North Avenue | Chicago, IL 60610
jamesoncommercial.com

STEVEN GOLDSTEIN
Senior Vice President
(P) 312.840.9002
steve@chicagobroker.com

BRENT BURDEN, CCIM
Senior Vice President
(P) 312.929.1597
bburden@jameson.com

©Jameson Real Estate LLC. All information provided herein is from sources deemed reliable. No representation is made as to the accuracy thereof & it is submitted subject to errors, omissions, changes, prior sale or lease, or withdrawal without notice. Projections, opinions, assumptions & estimates are presented as examples only & may not represent actual performance. Consult tax & legal advisors to perform your own investigation.