



FOR LEASE
23-25 31st Street
Astoria, New York

Brand New, Astoria Office/ Medical Space

Floor: Entire 4th Floor – 6,646 RSF
Partial 5th Floor – 3,132 RSF – Deal Pending
Total – 9,778 RSF

Asking Rent: Upon Request

Term: 10 Years

Possession: Immediate

Comments

- Features 12' slab heights
- Excellent natural light and New York City views
- Potential for useable terrace
- Parking garage in building
- Conveniently located next to N,Q subway & Q69 bus
- Will accept Medical Use



For more information, contact:

Tony Builder
Associate
+1 212 698 5603
anthony.builder@cushwake.com

Maria Travlos
Director
+1 212 713 6795
maria.travlos@cushwake.com

Glenn Isaacson
Vice Chairman



FOR LEASE
23-25 31st Street
Astoria, New York



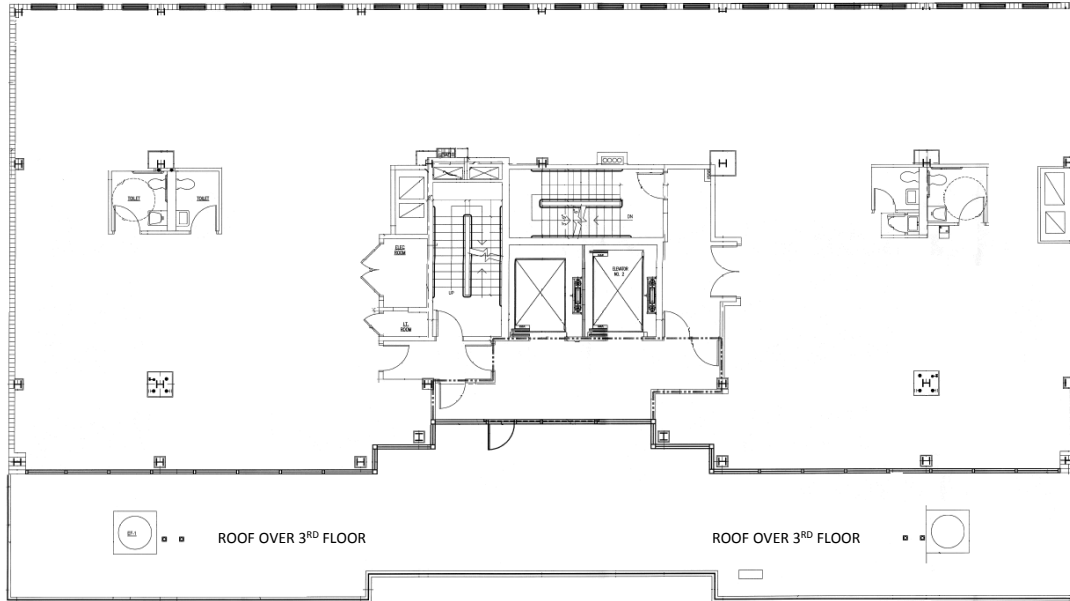
For more information, contact:

Tony Builder
Associate
+1 212 698 5603
anthony.builder@cushwake.com

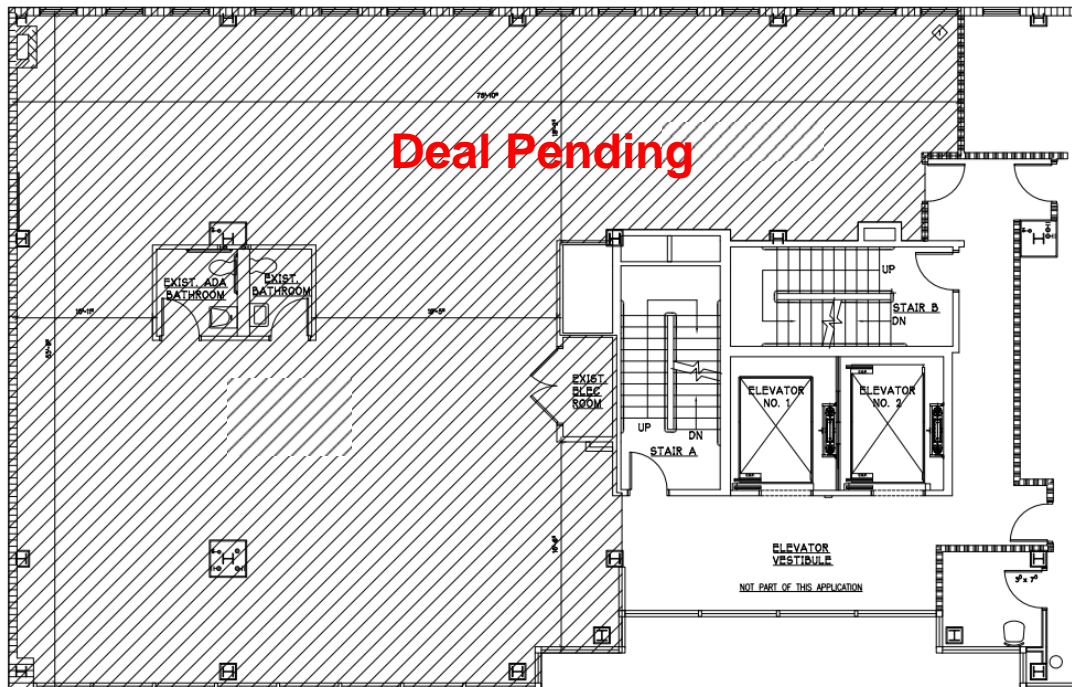
Maria Travlos
Director
+1 212 713 6795
maria.travlos@cushwake.com

Glenn Isaacson
Vice Chairman

Floor Plan – Entire 4th Floor



Floor Plan – Partial 5th Floor



For more information, contact:

Tony Builder
Associate
+1 212 698 5603
anthony.builder@cushwake.com

Maria Travlos
Director
+1 212 713 6795
maria.travlos@cushwake.com

Glenn Isaacson
Vice Chairman