

4 Lyberty Way
Westford, MA 01886

For Lease
\$10.00 NNN
Flex/Industrial - 19,308 sf



Premier Flex/Industrial space!

Property Highlights

- Built: 1982
- Construction: Steel
- Parking Features: 21+ Spaces, Paved, Driveway, On-site
- Roof Material: Membrane
- Utilities: Public Water, Private Sewer, Natural Gas. 44 Volts, Fiber Optic

Single story flex space. Companion tenant is Cynosure. 40,000 square foot building with 50% availability. Loading dock and drive-in door available.

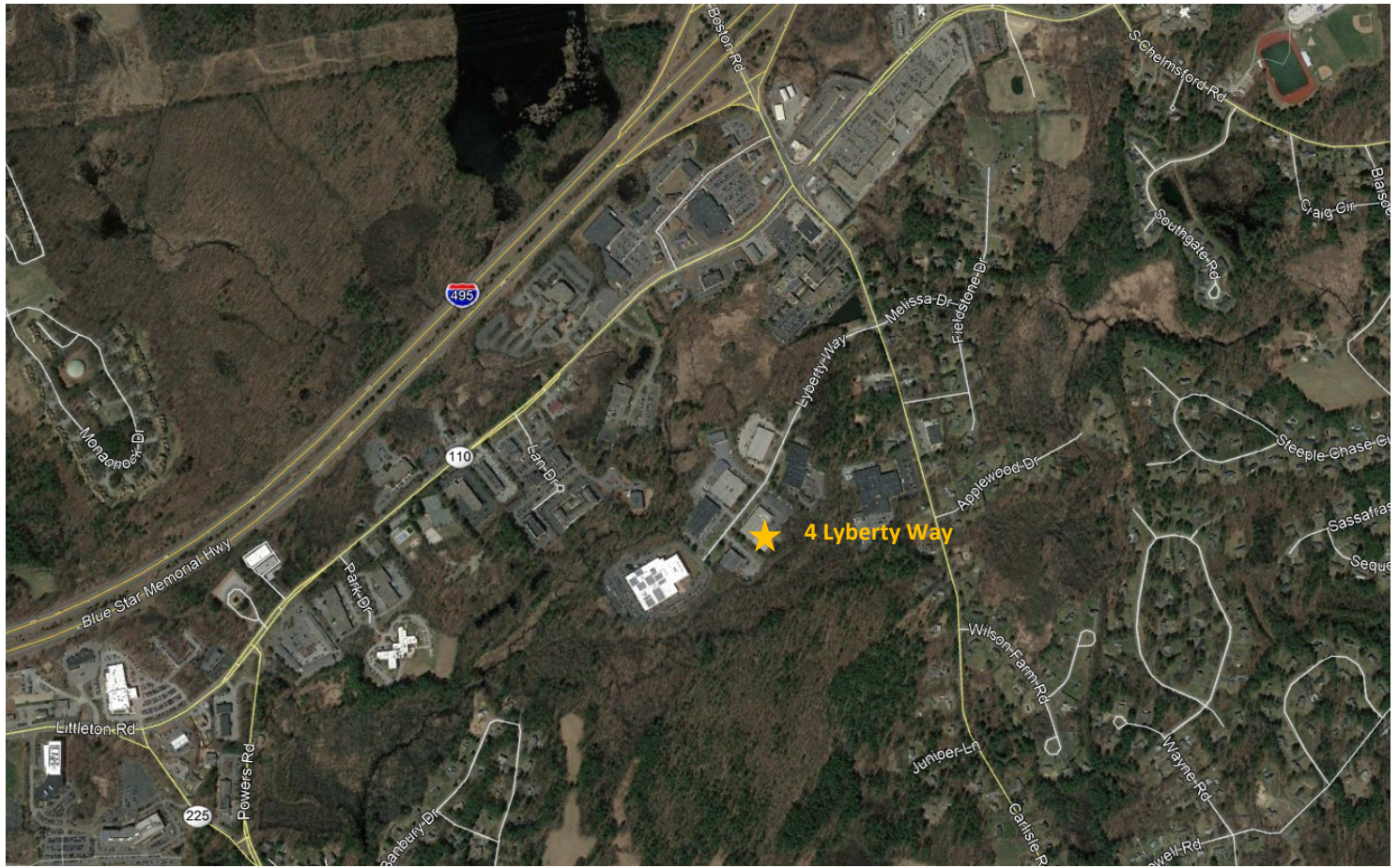
Disclaimer: The Evaluation Material contains information provided by the Owner and obtained by the Broker. While the information is believed to be accurate, Receiving Party should independently evaluate its completeness and accuracy before making an offer. This Evaluation Material is subject to prior placement, errors, omissions, changes or withdrawal without notice and does not constitute a recommendation, endorsement or advice as to the value of the Property by Disclosing Party.



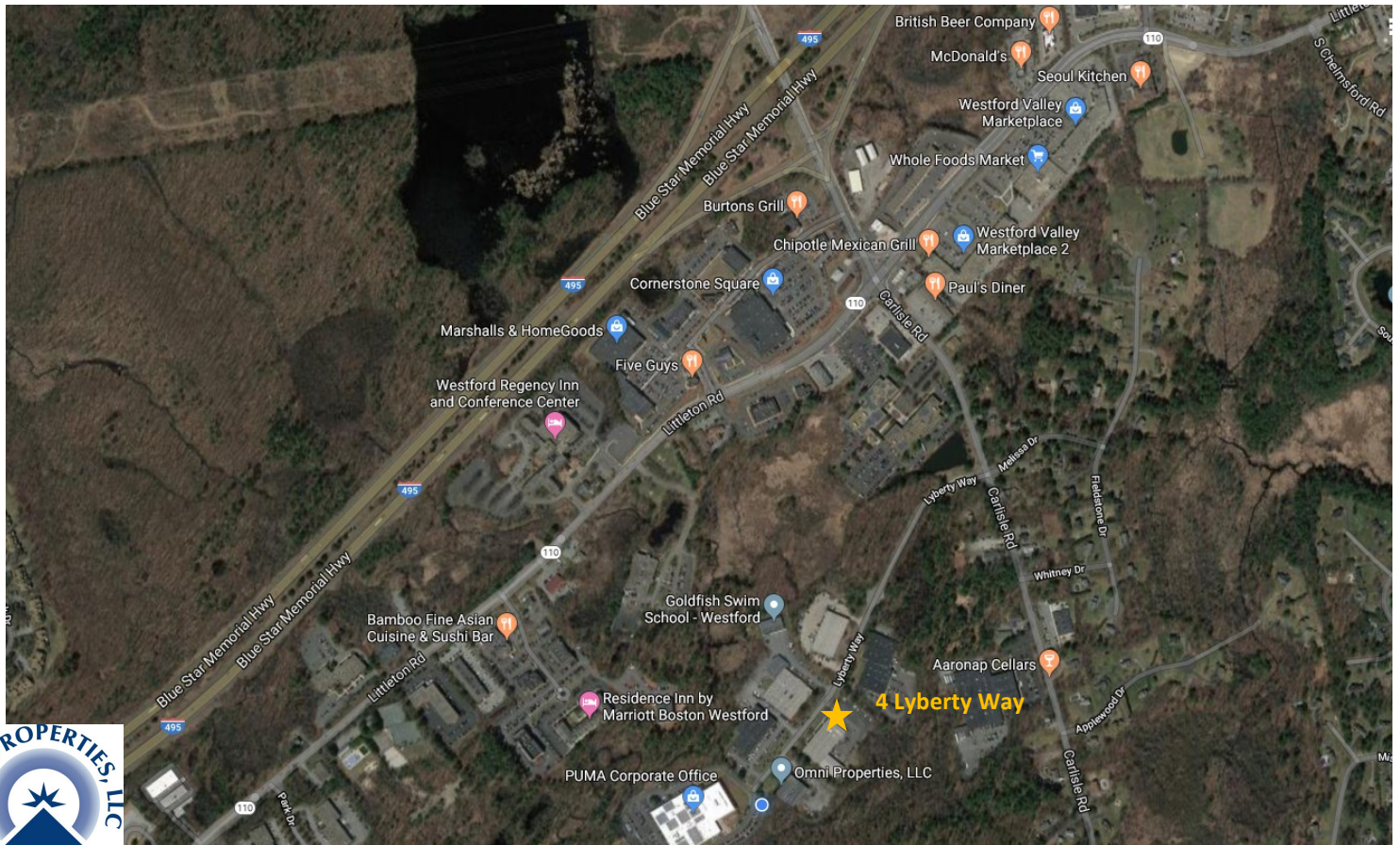
Call for an appointment
Tom Calderone: 978.397.4227
George Robb: 857.891.7254

Omni Properties
6 Lyberty Way STE 203, Westford MA 01886
www.omniproperties.com
978.369.4884

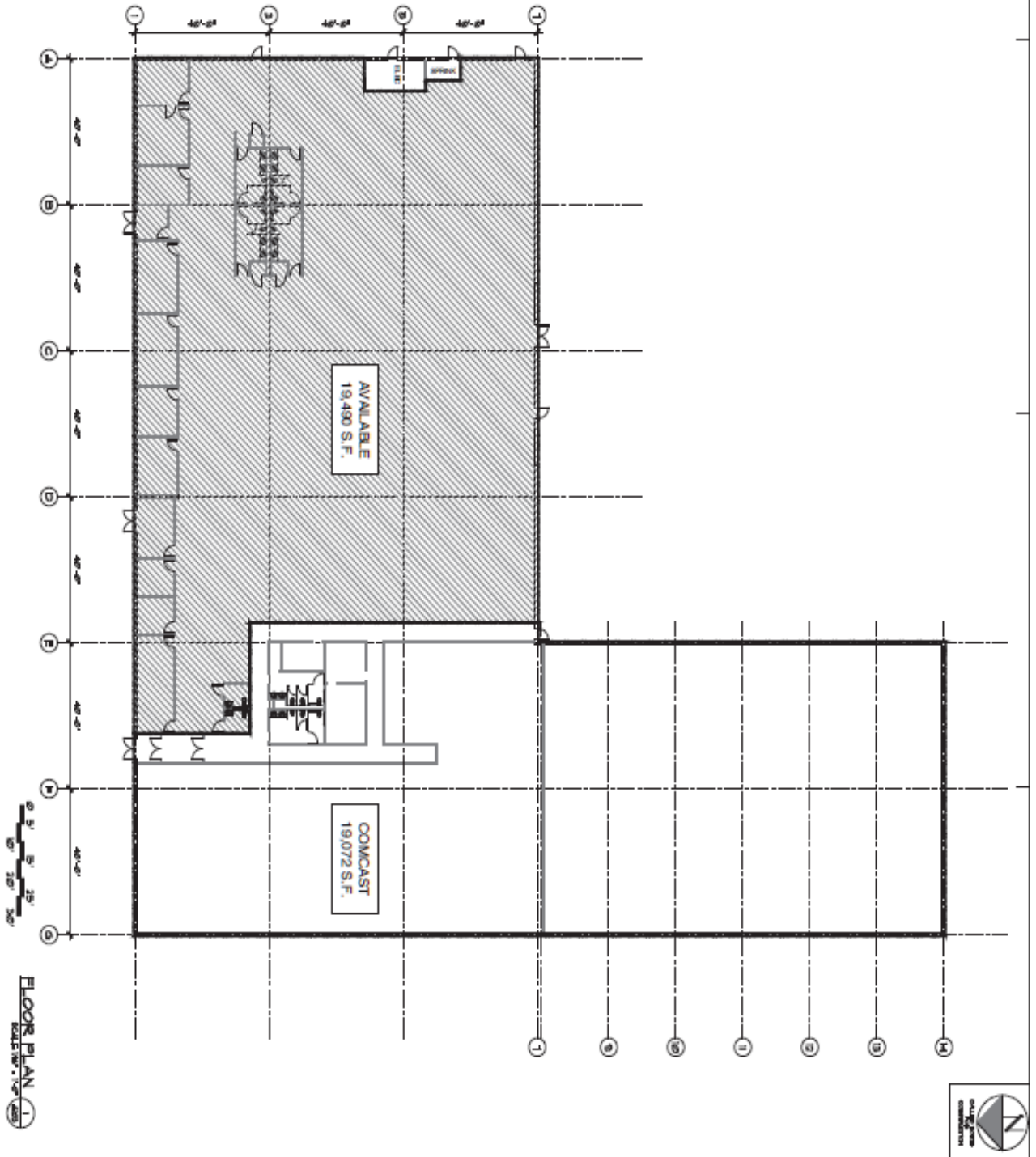
4 Lyberty Way



Convenient Location!



Floor Plans



Project No.	A103
Client	BA VENTURES, LLC
Address	7 LYBERTY WAY, WESTFORD, MA 01886
Architect	PHILLIPPE TRIBALLET ARCHITECTS
Scale	1/8" = 1'-0"
Date	08/11/2010
Drawn by	PH
Checked by	PH
Approved by	PH

prepared for: BA VENTURES, LLC
7 LYBERTY WAY, WESTFORD, MA 01886

Title: FLOOR PLAN

4 LYBERTY WAY
WESTFORD, MA 01886

PRT MMV ©
These drawings are new and do not constitute the sole property of Philippe Triballet Architect. Use of these plans or any form of reproduction of this design in whole or part without express written consent is prohibited and shall result in the full extent of penalties under law.

PHILLIPPE TRIBALLET ARCHITECTS
100 MARKET STREET
WESTFORD, MA 01886
TEL: 978.392.1111
WWW.PHTA.COM

