

2595

EAST BAYSHORE ROAD
PALO ALTO • CALIFORNIA

NEW PALO ALTO OFFICE SPACE AVAILABLE
\$5.75 FULL SERVICE



ROGER OSER
roser@ngkf.com
650.358.5262
CA RE License #00826289

CLAYTON JONES
clayton.jones@ngkf.com
650.473.4774
CA RE License #02014728

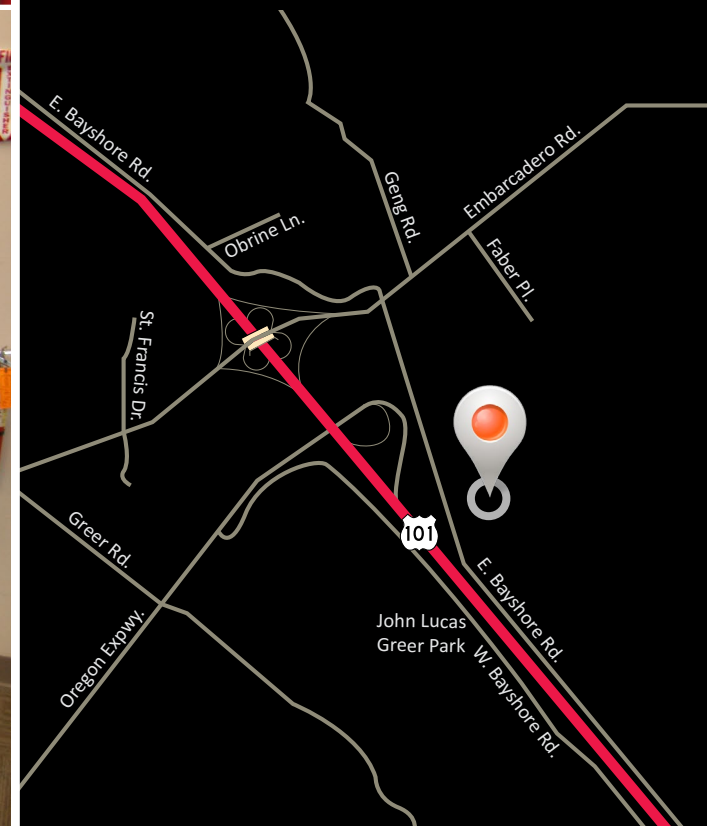


PROPERTY HIGHLIGHTS

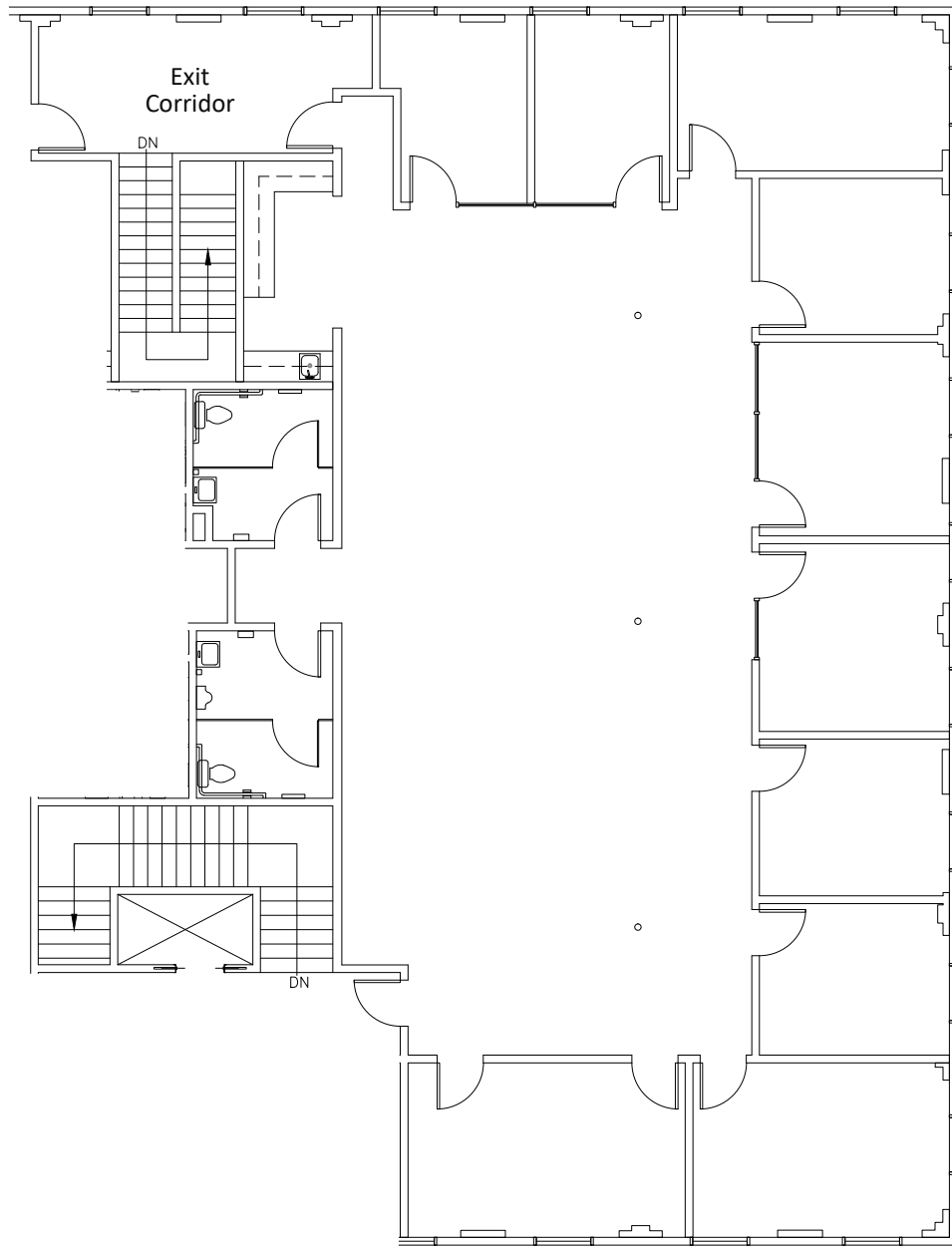
- Plentiful natural light and 10'+ceiling height
- Monument signage on Bayshore Road available
- Desirable Palo Alto address and convenient access to Bayshore running/bike trails
- 3.3/1000 parking ratio
- Responsive onsite management
- Outdoor patio area
- Electric car charging station onsite

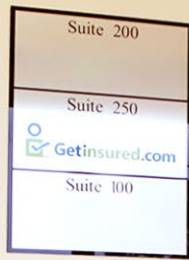
SECOND FLOOR - SUITE 240

- ±3,985 RSF available
- Break room
- Conference room(s)
- Internal restrooms



SECOND FLOOR
SUITE 240





CalTrain/Shuttle Schedule

2595
EAST BAYSHORE ROAD
PALO ALTO • CALIFORNIA

MORNING COMMUTE SERVICE

Station	Palo Alto High School	Middlefield/Embarcadero	N California/Embarcadero	Palo Alto Tech Center	N California/Embarcadero	Middlefield/Embarcadero	Palo Alto High School	Station
Stop #1	Stop #51	Stop #54	Stop #58	Stop #60	Stop #62	Stop #67	Stop #70	Stop #1
—	—	—	—	—	6:45	6:48	6:50	6:59
7:00	7:06	7:08	7:11	7:15	7:23	7:26	7:29	7:36
7:28	7:33	7:35	7:39	7:43	7:52	7:58	8:03	8:15
7:46	7:54	7:57	8:01	8:06	8:17	8:22	8:27	8:38
8:28	8:34	8:38	8:41	8:46	8:54	8:56	8:58	9:08
8:40	8:45	8:48	8:51	8:55	9:06	9:08	9:10	9:27
9:21	9:26	9:29	9:32	9:36	9:44	9:47	9:50	9:58
9:58	10:03	10:05	10:07	10:11	10:16	10:20	10:23	10:26

AFTERNOON COMMUTE SERVICE

Station	Palo Alto High School	Middlefield/Embarcadero	N California/Embarcadero	Palo Alto Tech Center	N California/Embarcadero	Middlefield/Embarcadero	Palo Alto High School	Station
Stop #1	Stop #51	Stop #54	Stop #58	Stop #60	Stop #62	Stop #67	Stop #70	Stop #1
3:15	3:21	3:25	3:28	3:34	3:39	3:41	3:44	3:53
3:39	3:45	3:49	3:52	3:57	4:03	4:06	4:09	4:18
3:53	3:59	4:03	4:07	4:12	4:20	4:23	4:25	4:34
4:25	4:32	4:35	4:39	4:44	4:53	4:56	4:59	5:08
4:40	4:47	4:50	4:54	4:59	5:08	5:11	5:14	5:23
5:25	5:33	5:37	5:40	5:47	5:52	5:55	5:59	6:08
5:48	5:56	5:59	6:02	6:08	6:15	6:18	6:21	6:30
6:14	6:21	6:24	6:27	6:33	6:40	6:42	6:45	6:54
6:56	7:02	7:05	7:08	7:14	—	—	—	—

Embarcadero Shuttle

CITY OF PALO ALTO

The distributor of this communication is performing acts for which a real estate license is required. The information contained herein has been obtained from sources deemed reliable but has not been verified and no guarantee, warranty or representation, either express or implied, is made with respect to such information. Terms of sale or lease and availability are subject to change or withdrawal without notice.