



11636 Industriplex Blvd

Baton Rouge, Louisiana 70809

Property Highlights

- 18,740 SF Total
- 6,516 Office; 12,669 Warehouse
- 3 Phase
- Ample Parking
- Excellent Visibility
- Property did not flood in 2016

Lease Rate

\$6.25 SF/yr (NNN)



For more information

Erin Caballero

O: 225 297 7868
erinc@latterblum.com

Grey Hammett III

O: 225 295 0800
grey@latterblum.com

CALL OR EMAIL FOR MORE INFORMATION

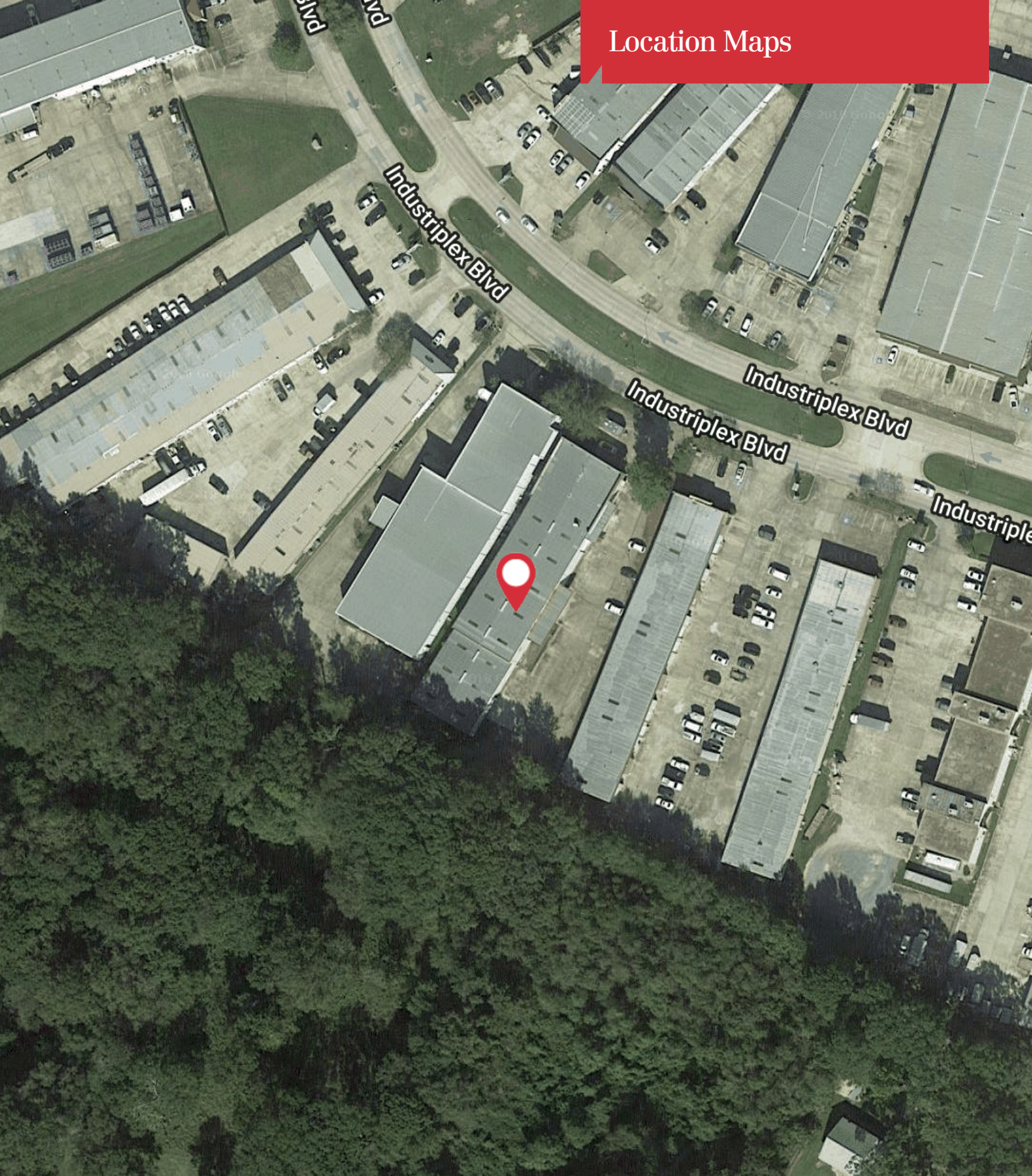
NO WARRANTY OR REPRESENTATION, EXPRESS OR IMPLIED, IS MADE AS TO THE ACCURACY OF THE INFORMATION CONTAINED HEREIN, AND THE SAME IS SUBMITTED SUBJECT TO ERRORS, OMISSIONS, CHANGE OF PRICE, RENTAL OR OTHER CONDITIONS, PRIOR SALE, LEASE OR FINANCING, OR WITHDRAWAL WITHOUT NOTICE, AND OF ANY SPECIAL LISTING CONDITIONS IMPOSED BY OUR PRINCIPALS NO WARRANTIES OR REPRESENTATIONS ARE MADE AS TO THE CONDITION OF THE PROPERTY OR ANY HAZARDS CONTAINED THEREIN ARE ANY TO BE IMPLIED. LICENSED IN LOUISIANA.

1700 City Farm Drive
Baton Rouge, LA 70806
225 295 0800 tel
latterblum.com

Additional Photos



Location Maps



Google

Map data ©2018 Google Imagery ©2018 , DigitalGlobe, U.S. Geological Survey, USDA Farm Service Agency

Property Floor Plan

