

THE LEARNING EXPERIENCE

Academy of Early Education

JUST SIGNED

SE-264TH ST

Fred Meyer

FOR LEASE

26700 242nd Ave SE
Maple Valley, WA 98038

SE 242ND AVE

SE SUMMIT LANDSBURG RD

TRM
WOOD PRODUCTS CO., INC.



NEW LIGHT!

SE KENT KANGLEY RD



FOUR CORNERS

First Western Properties—Tacoma Inc. | 253.472.0404
6402 Tacoma Mall Blvd, Tacoma, WA 98409 | fwp-inc.com



FOR LEASE / BUILD TO SUIT / GROUND LEASE

125,000 SF LAND AVAILABLE

- Parcel #: 2722069040
- Available for lease - Build to Suit or Ground Lease
- Call for details



Population



Average HH Income

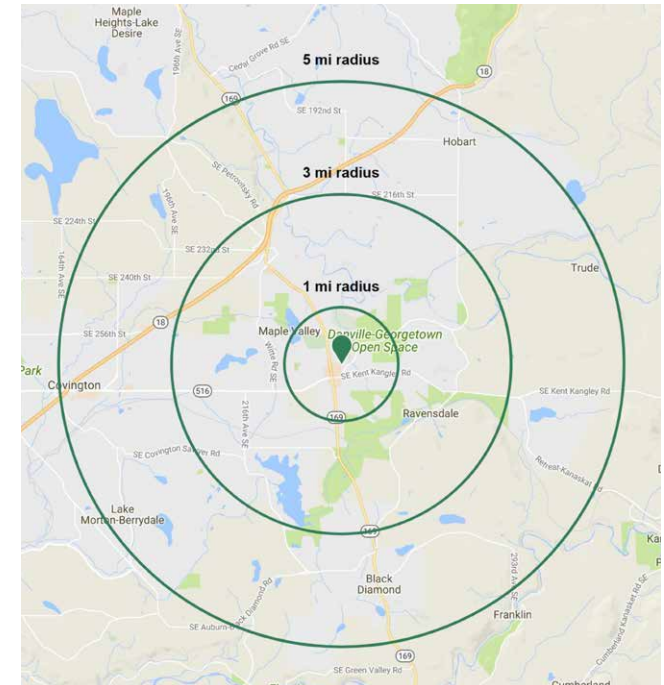


Daytime Population

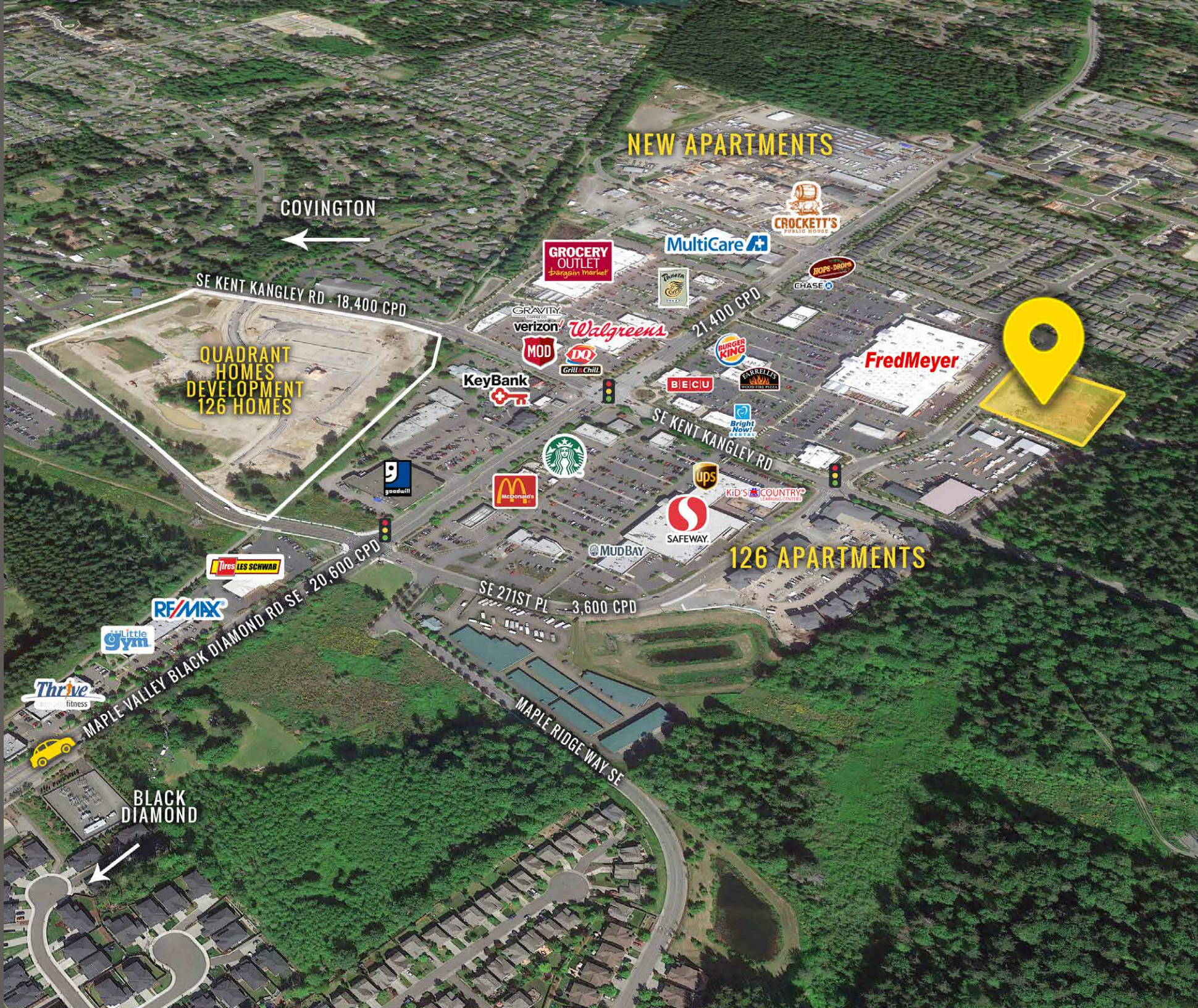
Regis - 2021

	Population	Average HH Income	Daytime Population
Mile 1	7,337	\$143,092	2,996
Mile 3	40,663	\$144,588	16,151
Mile 5	72,276	\$145,808	32,866

TENANTS NEARBY



SUMMARY



COVINGTON

NEW APARTMENTS

SE KENT KANGLEY RD - 18,400 CPD

QUADRANT HOMES DEVELOPMENT
126 HOMES

Fred Meyer

126 APARTMENTS

MAPLE VALLEY BLACK DIAMOND RD SE - 20,600 CPD

SE 271ST PL - 3,600 CPD

BLACK DIAMOND

NEW APARTMENTS



COMING SOON!

SIGN 1B

SIGN 1A

SUMMARY

COVINGTON

QUADRANT HOMES DEVELOPMENT
126 HOMES

242ND AVE SE

MAPLE VALLEY BLACK DIAMOND RD - 14K CPD

SE KENT KANGLEY RD

18,400K CPD

126 APARTMENTS

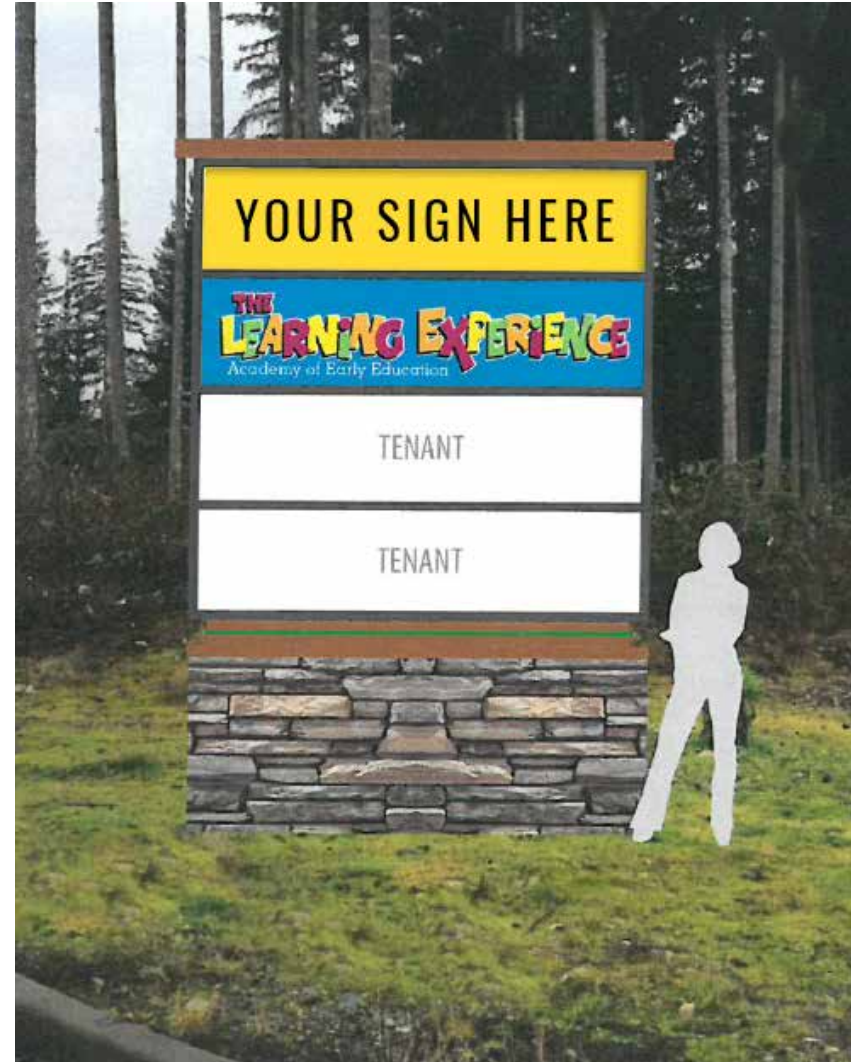


SIGN 1A - SOUTHWEST CORNER



SCALE: 1/4" = 1'

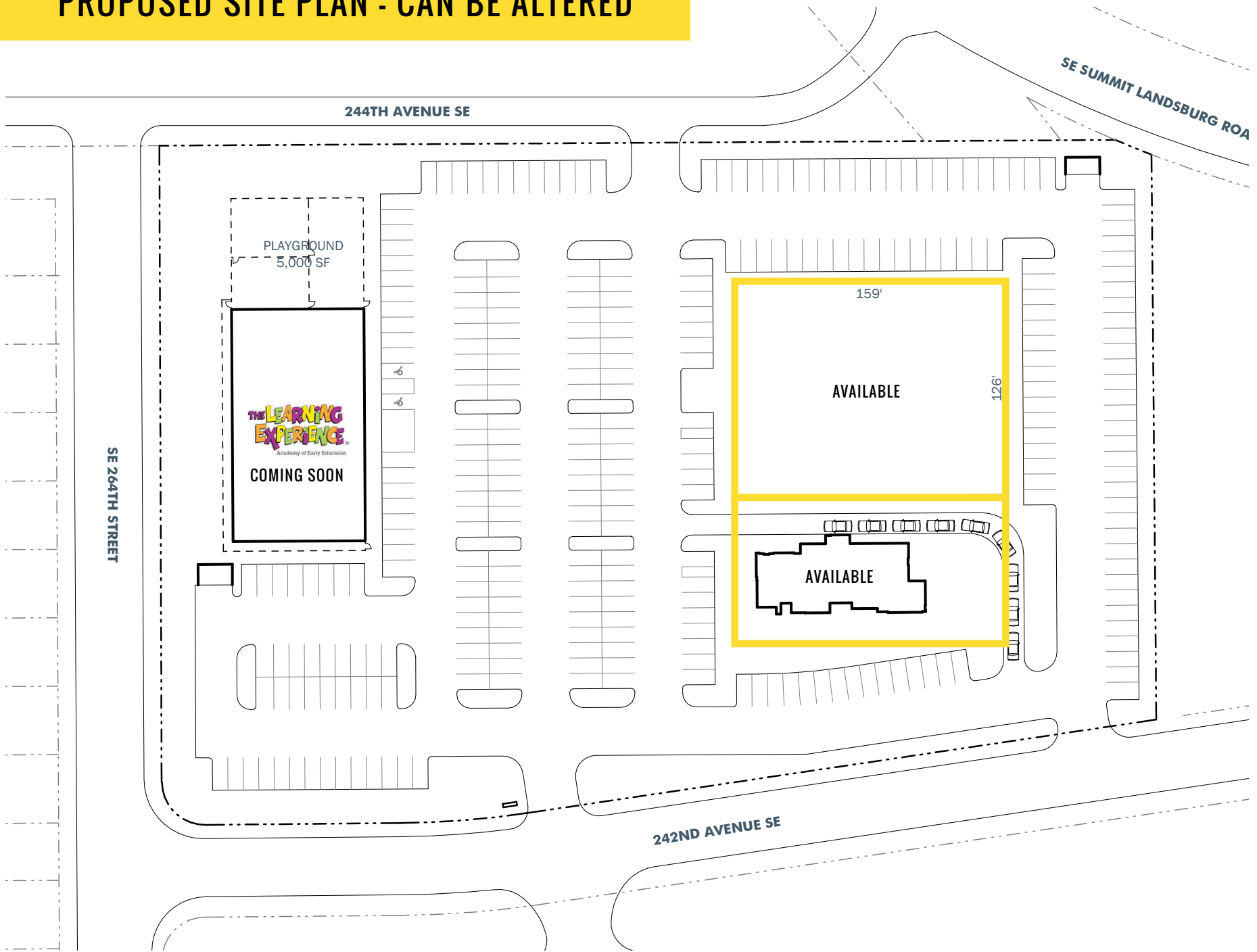
SIGN 1B - NORTHWEST CORNER



SCALE: 1/4" = 1'

PROPOSED SITE PLAN - CAN BE ALTERED

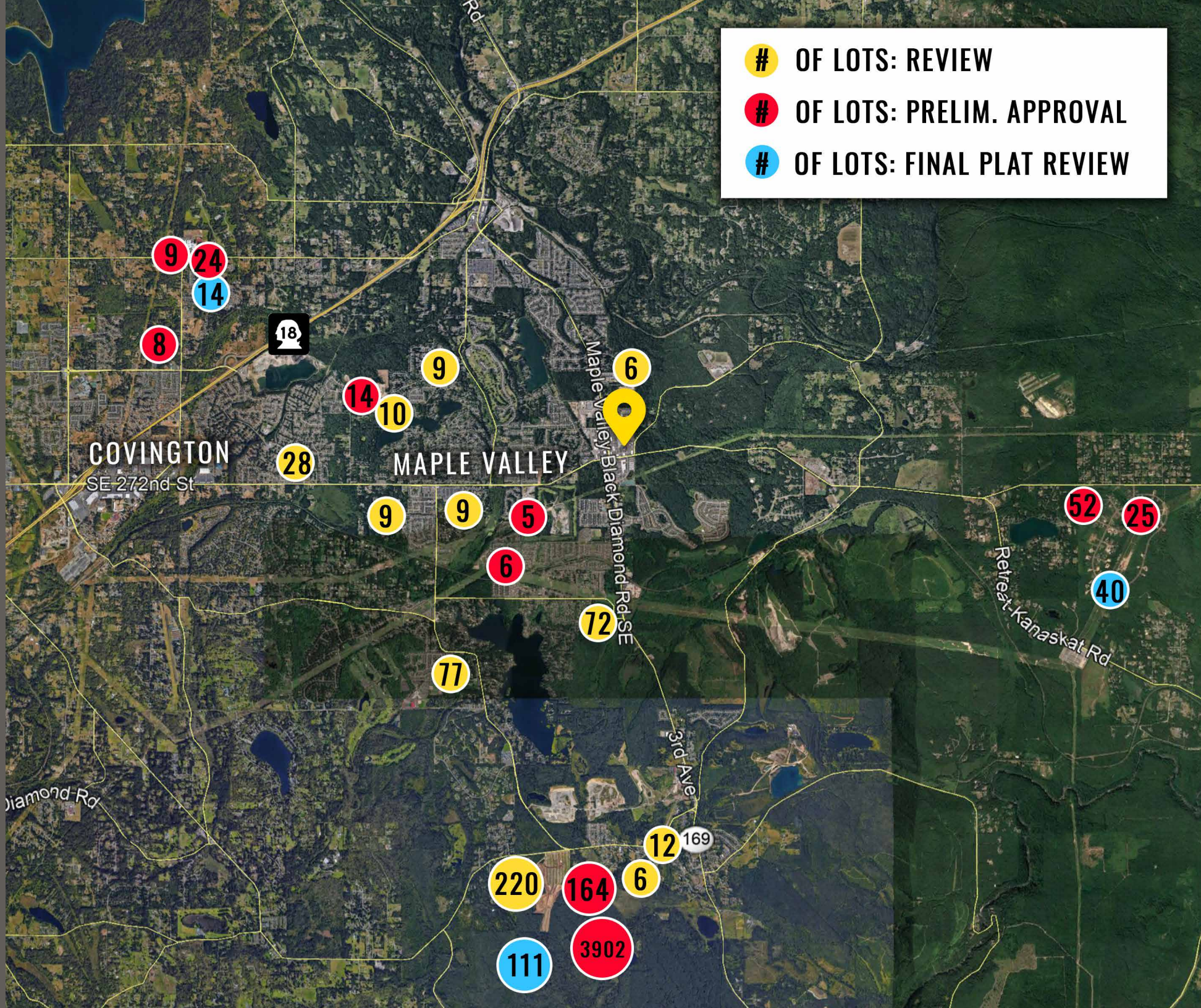
PROPOSED SITE PLAN



PROPOSED HOUSING DEVELOPMENTS



- # OF LOTS: REVIEW
- # OF LOTS: PRELIM. APPROVAL
- # OF LOTS: FINAL PLAT REVIEW





MAPLE VALLEY, WA The City of Maple Valley incorporated August 31, 1997. The City is 5.8 square miles, located east of Kent and Covington, and north of Black Diamond. Maple Valley is located about 30 minutes east of Seattle and Tacoma, equidistant from the water of Puget Sound and the landscapes of the Cascade Mountains. Maple Valley offers an extraordinary location to enjoy all that our region has to offer.

TACOMA | KIRKLAND | PORTLAND | SEATTLE



RELATIONSHIP FOCUSED. RESULTS DRIVEN.

TIM WEBER

253.471.5502
tweber@firstwesternproperties.com

DON WHITTLES

253.471.5509
dwhittles@firstwesternproperties.com

BLAKE WEBER

253.284.3646
bweber@firstwesternproperties.com



First Western Properties—Tacoma Inc. | 253.472.0404
6402 Tacoma Mall Blvd, Tacoma, WA 98409 | fwp-inc.com

© First Western Properties, Inc. DISCLAIMER: The above information has been secured from sources believed to be reliable, however, no representations are made to its accuracy. Prospective tenants or buyers should consult their professional advisors and conduct their own independent investigation. Properties are subject to change in price and/or availability without notice.