



MELROSE

8378 - 8384 Melrose Avenue



A New
Perspective

You've seen it?

The project features two architecturally distinct buildings located on one of the most recognizable streets in Los Angeles.



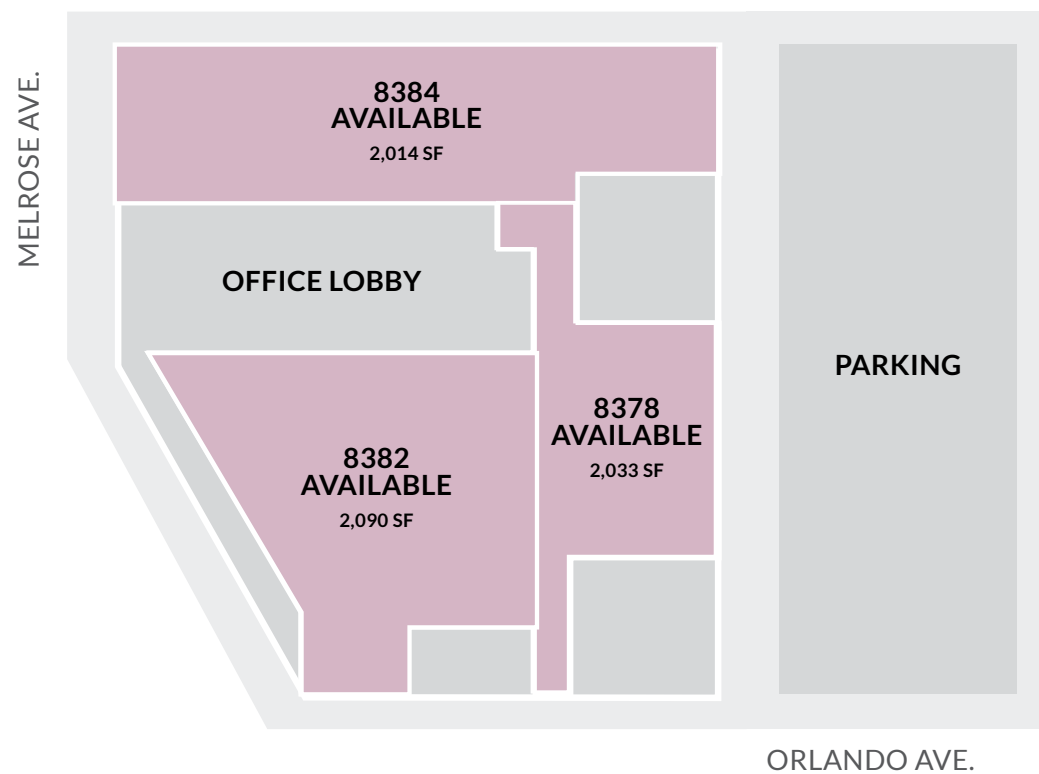
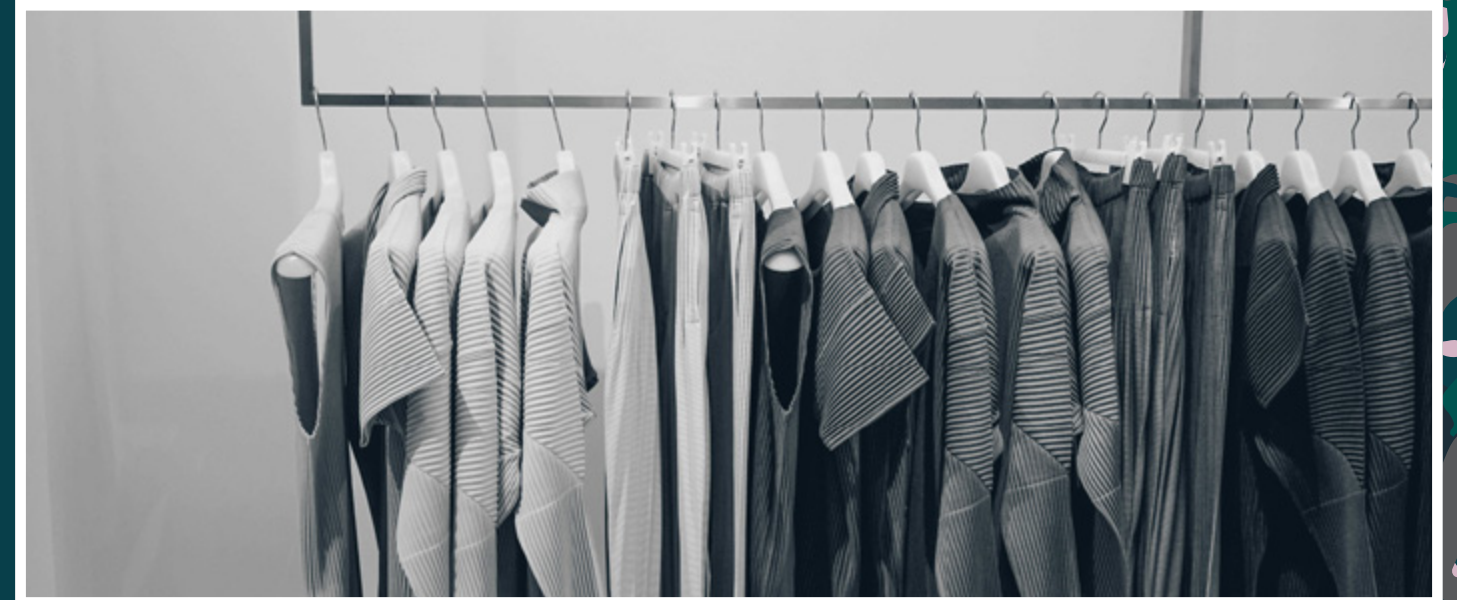
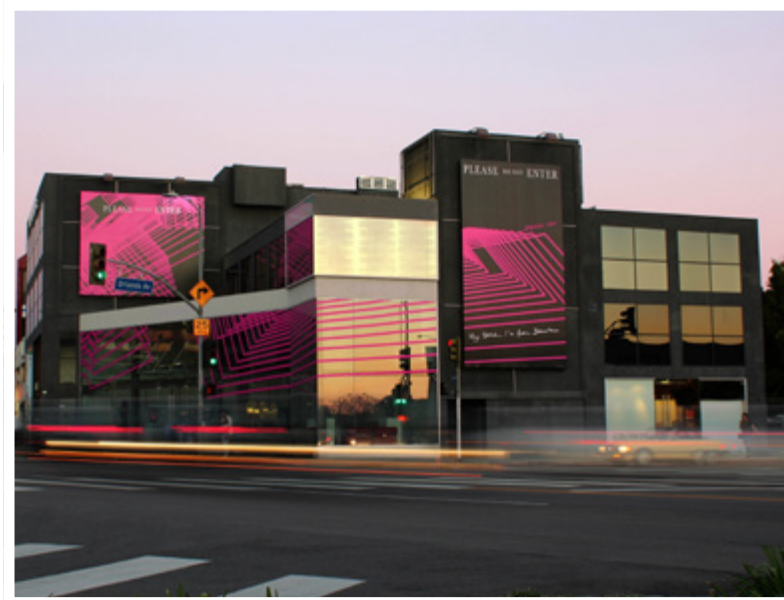
Maybe you haven't.

Two corners. Two flagship buildings. Three billboards.

Both buildings offer a retailer the unique opportunity to occupy a flagship corner location along one of the most highly sought-after and fashionable retail corridors in the country.

Be Seen.

Highly visible flagship opportunities with floor to ceiling window lines, wraparound storefronts, and billboards.





Billboards

Traffic Count Melrose and Orlando Avenue: 29,741 CPD

Unique option to amplify your brand with a targeted campaign message. Three billboards are available at one of the most highly visible locations on Melrose Ave. in West Hollywood.

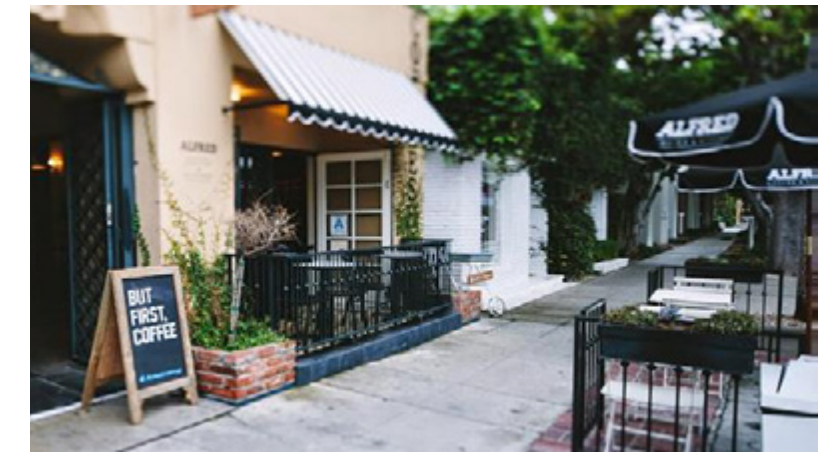
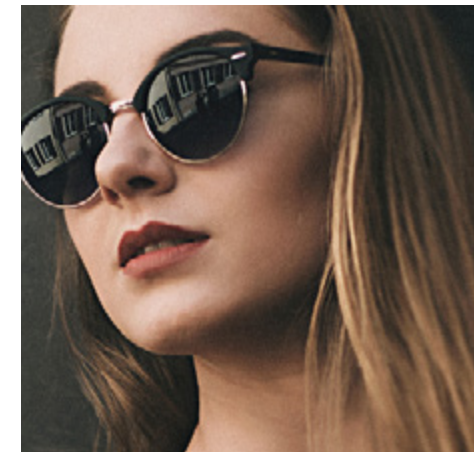


The Neighborhood

#MelrosePlace

Welcome to the gateway to Melrose Place and West Hollywood Design District; a destination where design and fashion-forward influencers converge.

Melrose Place is a quaint, pedestrian-friendly retail street recognized as a highly desirable location for leading lifestyle and luxury brands. Retailers and restaurants include: The Row, Vince, Waterworks, Chloe, Ink Sack, Fig & Olive, and the new Nordstrom LOCAL concept store to name a few.



2017 Estimated Population

47,253

1 MILE RADIUS

281,341

3 MILE RADIUS

868,491

5 MILE RADIUS

Population Ages 25-44 Years

45.2%

1 MILE RADIUS

38.1%

3 MILE RADIUS

34.6%

5 MILE RADIUS

Average Household Income

\$112,161

1 MILE RADIUS

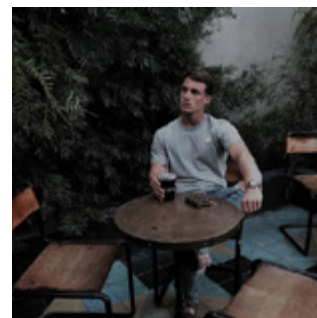
\$123,441

3 MILE RADIUS

\$100,510

5 MILE RADIUS

#MelrosePlace

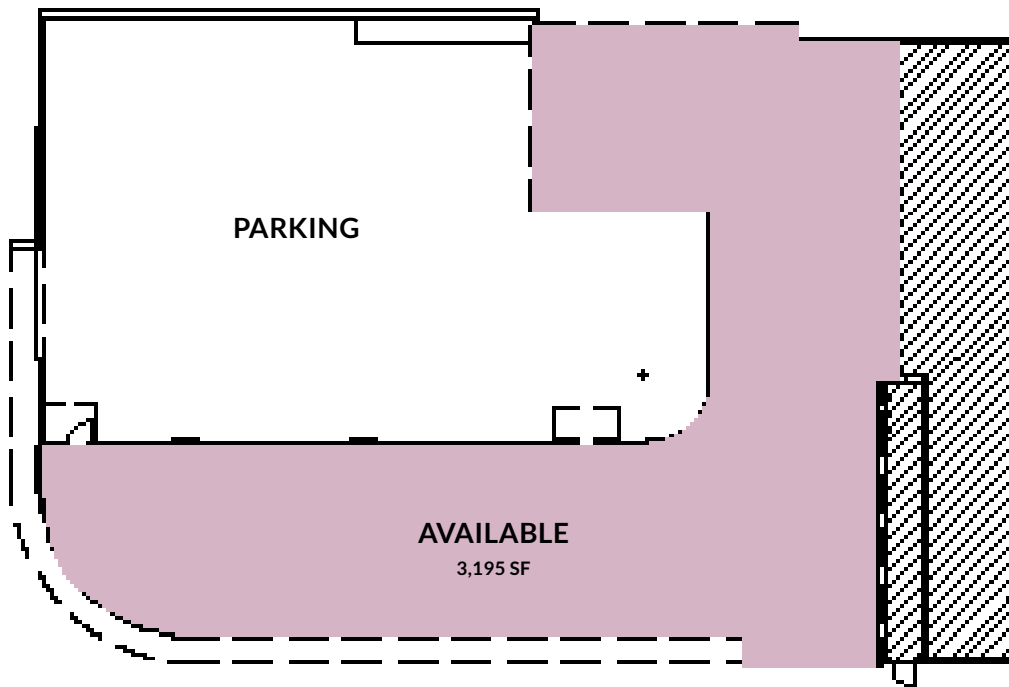


8379 Melrose Ave.

MELROSE AVE.



Single Tenant Scheme

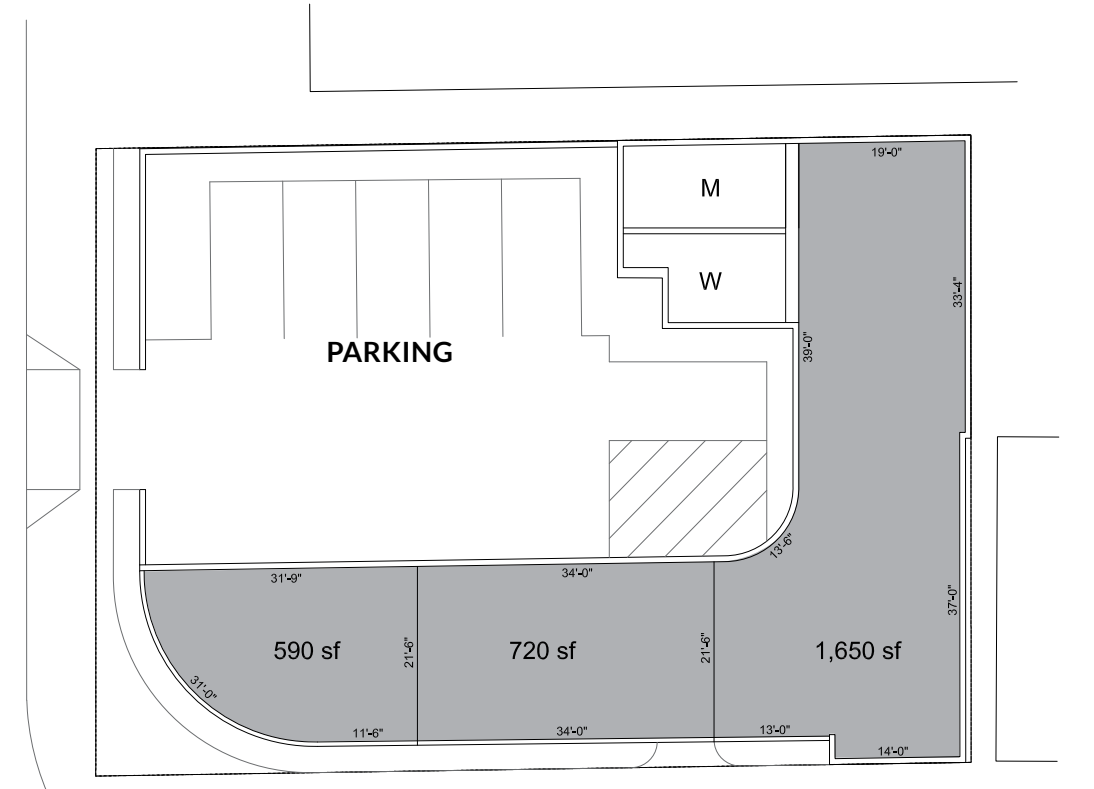


ORLANDO AVE.



Multiple Tenant Scheme

MELROSE AVE.



ORLANDO AVE.



MELROSE

Matthew D. Fainchtein

Cushman Wakefield
CA License 01503546
310.595.2234
matthew.fainchtein@cushwake.com

Carter Magnin

Cushman Wakefield
CA License 01909728
310.595.2203
carter.magnin@cushwake.com

Hedy Veverka

415. 613. 5813
Hedy.Veverka@MadisonMarquette.com

