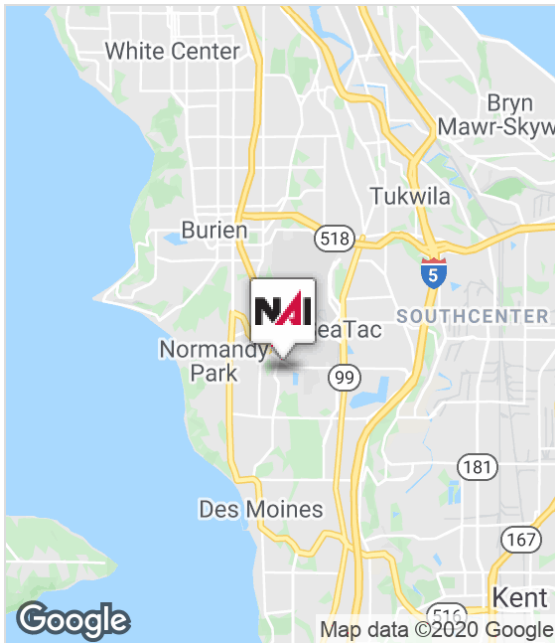


For Lease

# Warehouse

South Of SeaTac Int'l Airport



## SeaTac Industrial Park

Building 2, 18940 13th Pl S, SeaTac, WA 98148

- 4,896 SF with 1,088 SF of office
- 2 DH loading doors
- 14'-16' clear height
- Located on Des Moines Memorial Drive, just south of SeaTac Int'l Airport
- Close proximity to I-5, SR-99 & SR-509
- 3 one-story concrete tilt-up, multi-tenant light industrial/office buildings
- Available Now
- Call for pricing

For more information:

**Kent Channing**

+1 425 586 5628 • [kchanning@nai-pp.com](mailto:kchanning@nai-pp.com)

**Arie Salomon, SIOR, CCIM**

+1 425 586 5636 • [asalomon@nai-pp.com](mailto:asalomon@nai-pp.com)

Property owned by:



CLARION PARTNERS



BELLEVUE | SEATTLE | TACOMA

1201 Pacific Avenue, Suite 1703

Tacoma, WA 98402

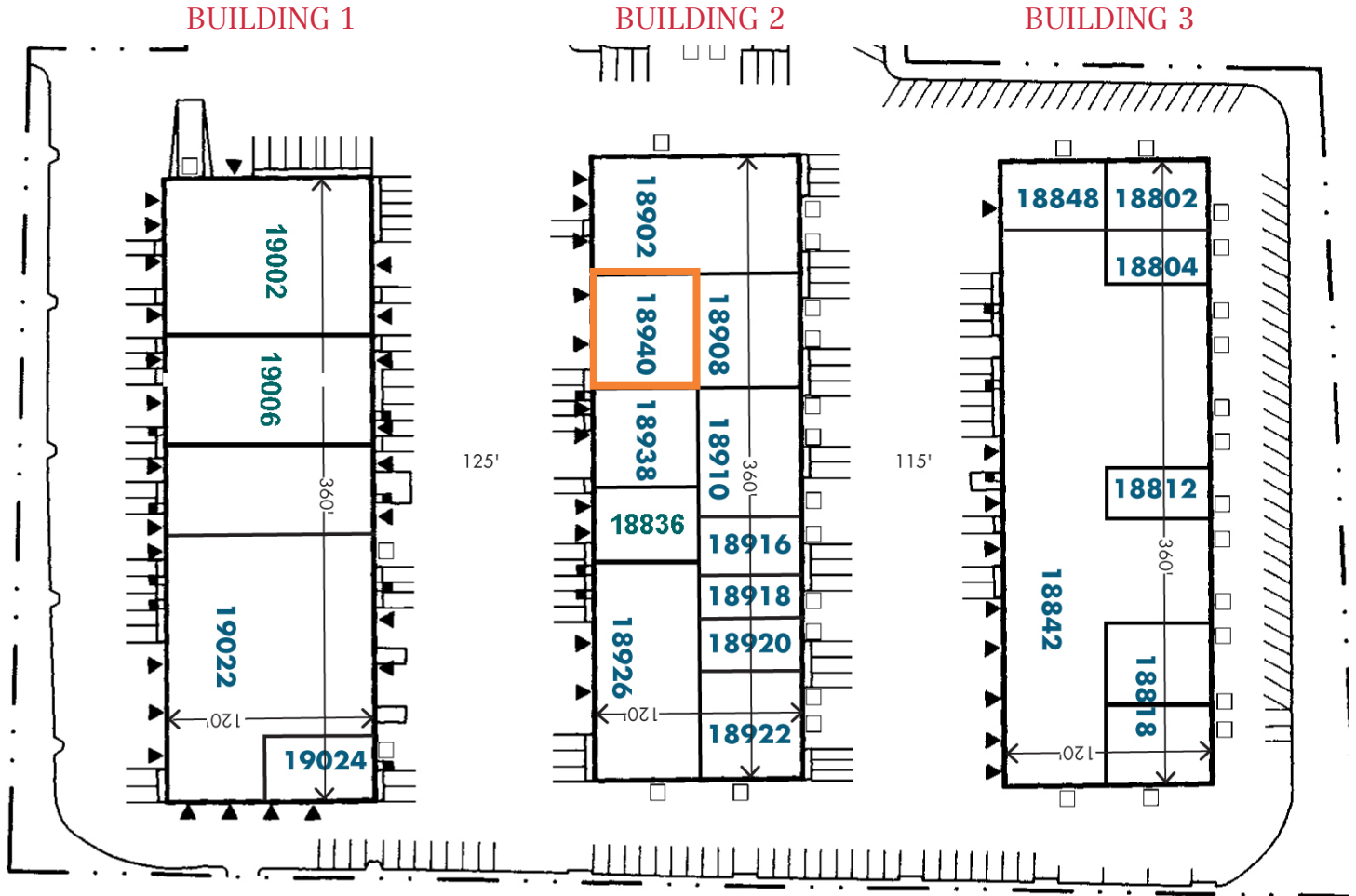
+1 253 383 3100

[nai-pp.com](http://nai-pp.com)

THE INFORMATION CONTAINED HEREIN HAS BEEN GIVEN TO US BY THE OWNER OF THE PROPERTY OR OTHER SOURCES WE DEEM RELIABLE, WE HAVE NO REASON TO DOUBT ITS ACCURACY, BUT WE DO NOT GUARANTEE IT. ALL INFORMATION SHOULD BE VERIFIED PRIOR TO PURCHASE OR LEASE.

Industrial for Lease

# SeaTac Industrial Park



## LEGEND

- ▲ DOCK-HIGH DOOR
- GRADE-LEVEL DOOR



Property owned by:  CLARION PARTNERS



1201 Pacific Avenue, Suite 1703

Tacoma, WA 98402

+1 253 383 3100

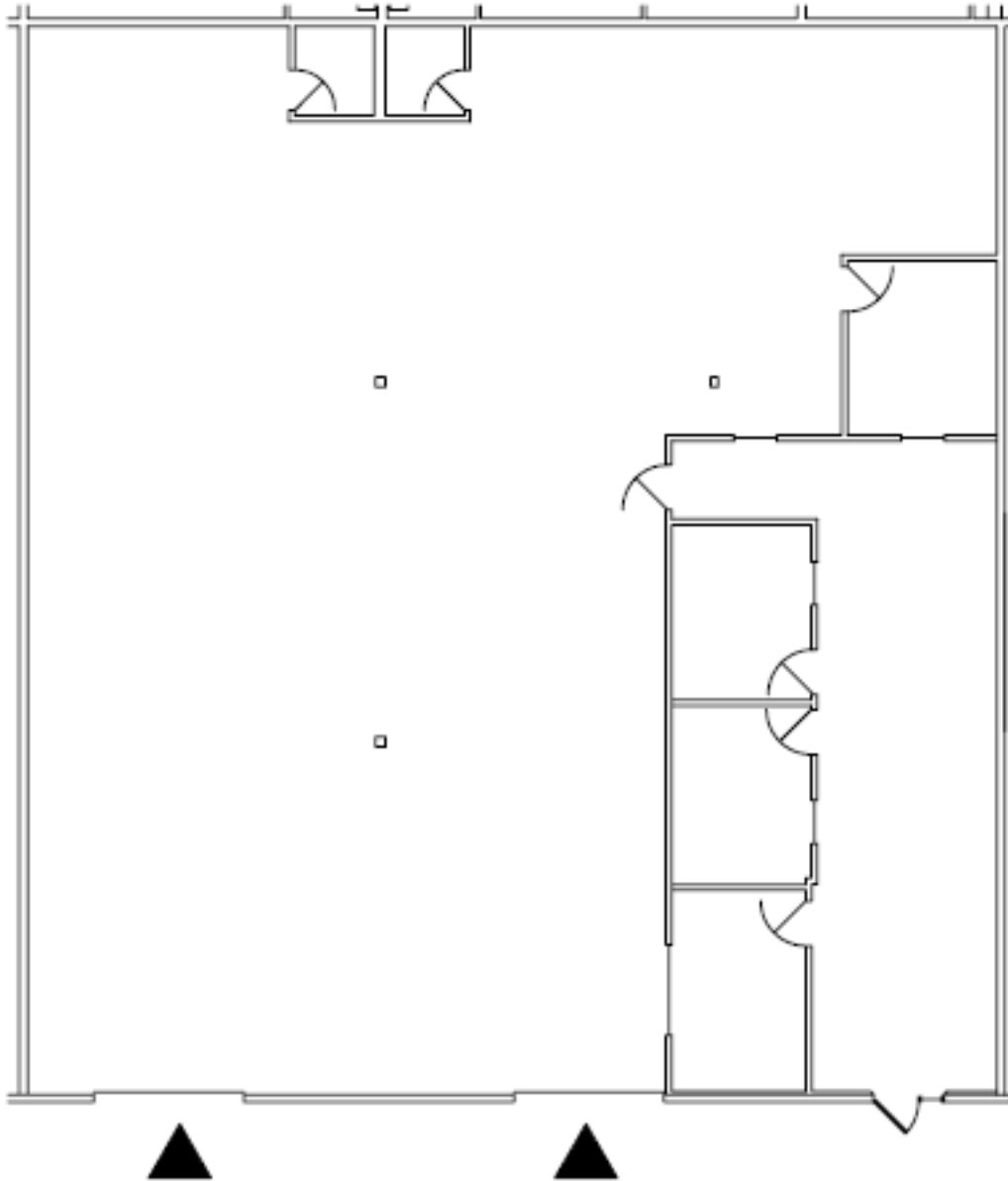
[nai-psp.com](http://nai-psp.com)

BELLEVUE | SEATTLE | TACOMA

THE INFORMATION CONTAINED HEREIN HAS BEEN GIVEN TO US BY THE OWNER OF THE PROPERTY OR OTHER SOURCES WE DEEM RELIABLE, WE HAVE NO REASON TO DOUBT ITS ACCURACY, BUT WE DO NOT GUARANTEE IT. ALL INFORMATION SHOULD BE VERIFIED PRIOR TO PURCHASE OR LEASE.

Industrial for Lease

# SeaTac Industrial Park



## AVAILABLE WAREHOUSE AND OFFICE



BELLEVUE | SEATTLE | TACOMA

1201 Pacific Avenue, Suite 1703

Tacoma, WA 98402

+1 253 383 3100

[nai-psp.com](http://nai-psp.com)

THE INFORMATION CONTAINED HEREIN HAS BEEN GIVEN TO US BY THE OWNER OF THE PROPERTY OR OTHER SOURCES WE DEEM RELIABLE, WE HAVE NO REASON TO DOUBT ITS ACCURACY, BUT WE DO NOT GUARANTEE IT. ALL INFORMATION SHOULD BE VERIFIED PRIOR TO PURCHASE OR LEASE.