

21241-21243 Ventura Boulevard

Woodland Hills, CA 91364

OFFICE SPACE FOR LEASE



Charles Dunn

CONTACT:

TODD M. WUSCHNIG

Director

CalBRE #01367230

Direct | 818.455.8205

twuschnig@charlesdunn.com

CHARLES DUNN COMPANY, INC.

12925 Riverside Drive, Suite 201 | Sherman Oaks, CA 91423 | Lic. #01201641 | charlesdunn.com

PROPERTY DETAILS

21241 - 21243 Ventura Boulevard is an office building in Woodland Hills. The Property is within walking distance to many amenities and has immediate access to the 101 Ventura Freeway and Warner Center. Floor plans available upon request.

PROPERTY FACTS

Lease Rate: \$2.00 - \$2.05/SF Full Service Gross
Parking: 3/1000 at \$47.00 per space
Term: 2-5 years

PROPERTY HIGHLIGHTS

- > No Operating Expenses!
- > No Annual Increases!
- > Motivated Landlord
- > Excellent location on Ventura Boulevard
- > Plenty of street parking
- > On-site property management
- > Beautiful landscaped grounds
- > Affordable after-hours HVAC rates
- > FedEx & UPS dropbox on-site



PROPERTY DETAILS

NORTH BUILDING SPACE AVAILABLE	SIZE	LEASE RATE
Suite 110/118	± 1,621 SF	\$2.00-\$2.05/SF Full Service Gross
Suite 128	± 699 SF	\$2.00-\$2.05/SF Full Service Gross
Suite 238	± 1,426 SF	\$2.00-\$2.05/SF Full Service Gross

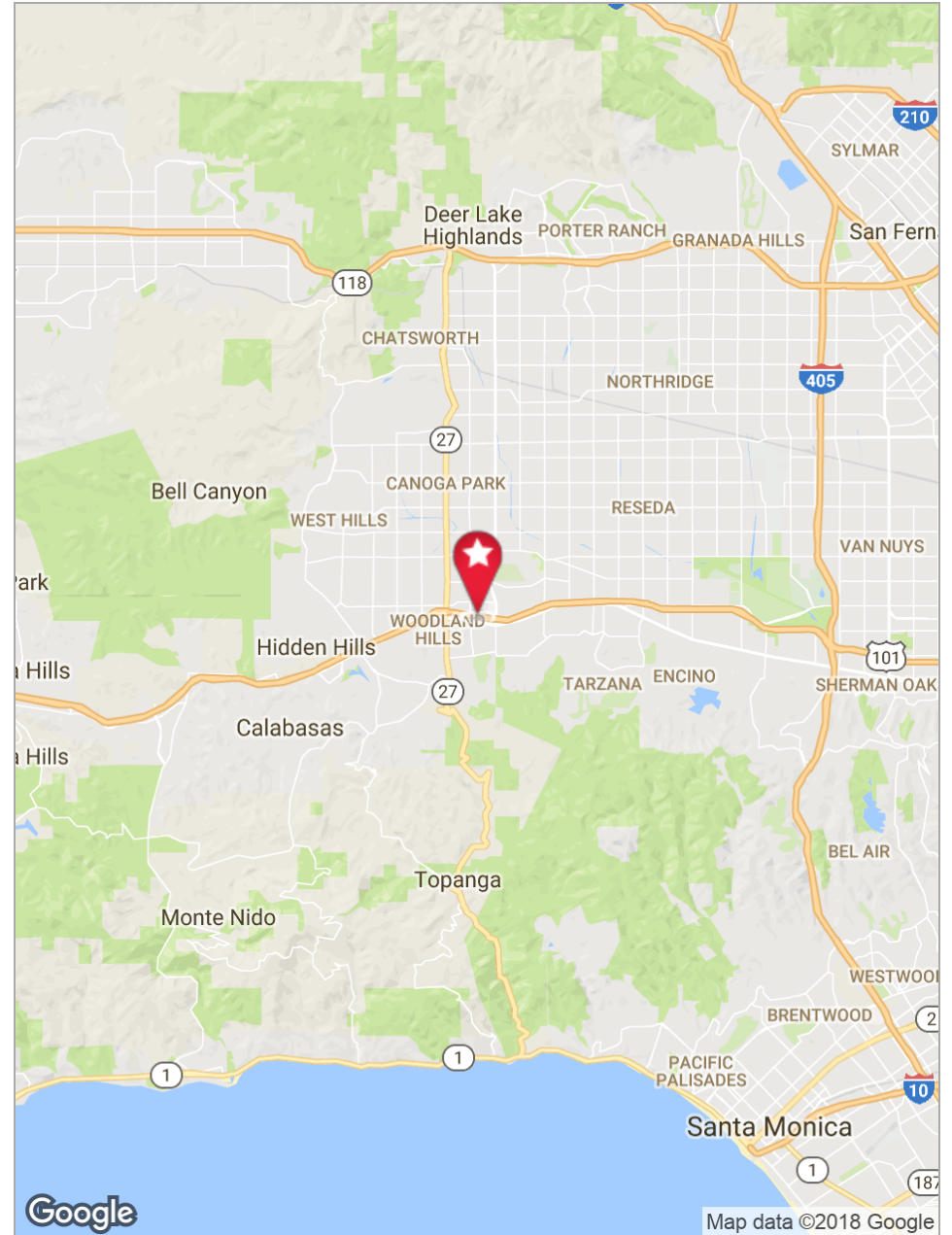
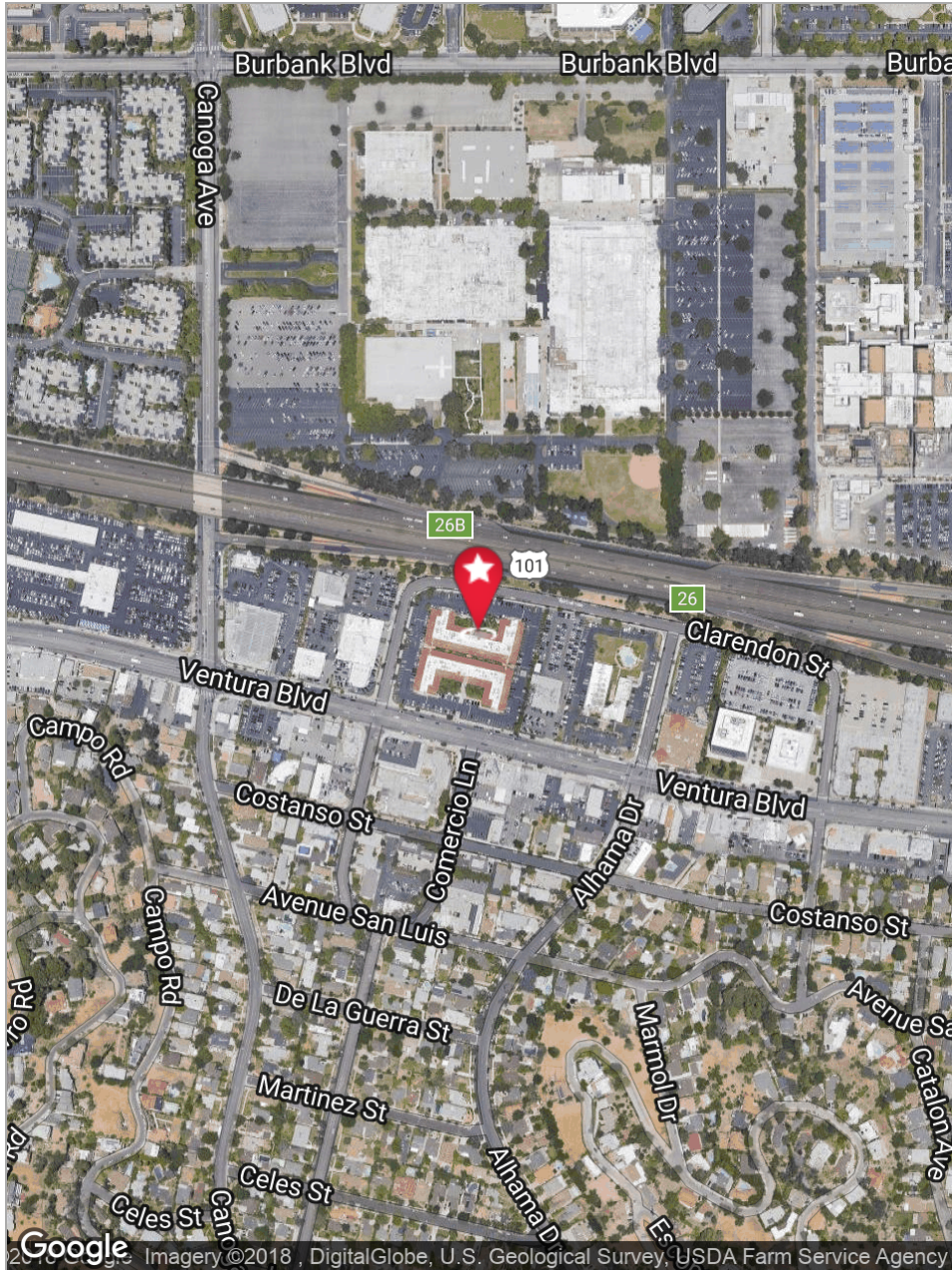
SOUTH BUILDING SPACE AVAILABLE	SIZE	LEASE RATE
No space currently available		



PROPERTY PHOTOS



PROPERTY MAPS



21241-21243 Ventura Boulevard

Woodland Hills, CA 91364

TODD M. WUSCHNIG

Director

CalBRE #01367230

Direct | 818.455.8205

twuschnig@charlesdunn.com

Charles Dunn Company, Inc. | 12925 Riverside Drive, Suite 201 | Sherman Oaks, CA 91423 | Lic. #01201641 | charlesdunn.com