

INDUSTRIAL WAREHOUSE FOR SUBLEASE



421 S CALIFORNIA ST
SAN GABRIEL, CA 91776

UNIT:

D

PROPERTY HIGHLIGHTS:

- Warehouse and office for sublease
- 12' x 10' ground-level loading door
- Well-maintained industrial park
- Features one private office, office/reception area (new carpeting in both offices) and two private restrooms
- Approx. 10 unreserved parking spaces

SIZE:
4,000 SQFT

PRICE:
\$1.50/SF
Industrial Gross



Ryan Mitchell
BRE #02013681

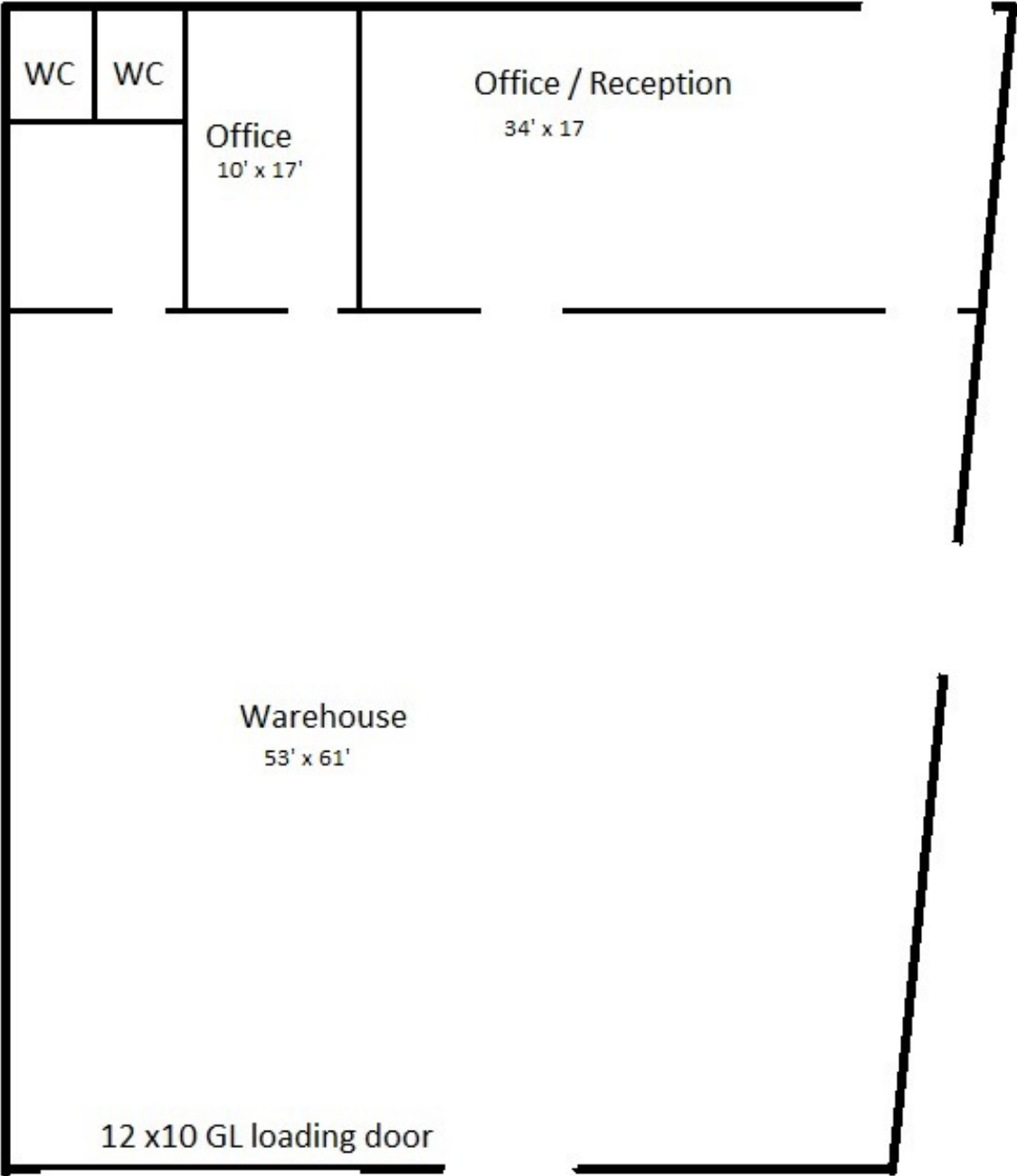
Office: 626.583.8400 • Cell: 626.833.7390 • Email: ryan@macvaugh.com

MacVaugh & Co. • 300 S Raymond Avenue • Suite 14 • Pasadena, CA 91105 • www.macvaugh.com

The information contained herein has been obtained from sources deemed to be reliable. While we have no reason to doubt its accuracy, we do not guarantee to and assume no liability for any inaccuracies and/or omissions. This is not an offering. Terms and conditions are subject to change. BRE License #00971669

421 S CALIFORNIA ST, UNIT D, SAN GABRIEL, CA 91776

Approximately 4,000 SQFT



Ryan Mitchell
BRE #02013681

Office: 626.583.8400 • Cell: 626.833.7390 • Email: ryan@macvaugh.com

MacVaugh & Co. • 300 S Raymond Avenue • Suite 14 • Pasadena, CA 91105 • www.macvaugh.com

The information contained herein has been obtained from sources deemed to be reliable. While we have no reason to doubt its accuracy, we do not guarantee to and assume no liability for any inaccuracies and/or omissions. This is not an offering. Terms and conditions are subject to change. BRE License #00971669